

Land for Sale



W Cambridge Ave

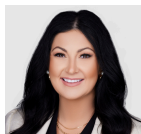
Site

W Salome Hwy

W Salome Hwy

NEC Salome Hwy & Cambridge Ave
±32 Acres (1,409,555 SF)

For More Information



Ciara Cline
(602) 618-4263
ccline@cresa.com



Ted Liles, SIOR
(562) 756-8359
tliles@cresa.com

cresa

NEC Salome Hwy & Cambridge Ave

Maricopa County

Location: Maricopa County - NEC Salome Hwy & Cambridge Ave

Land Area: ±32 Acres (1,409,555 SF)

APN: 506-33-528

Zoning: RU-43

Utilities & Infrastructure: Buyer to verify availability and capacity

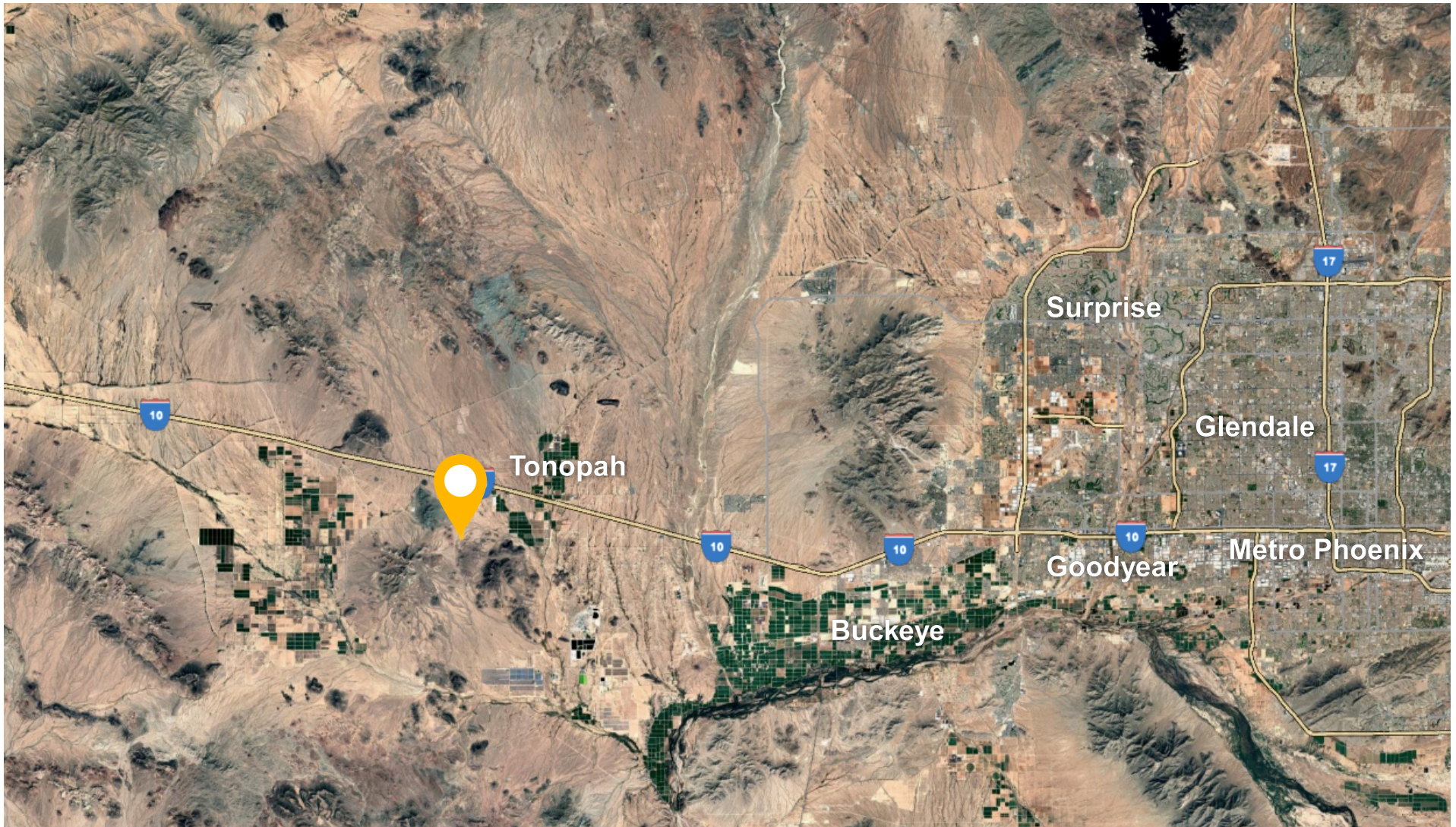
Asking Price: Call for pricing



Disclaimer: Cresa © 2025. All rights reserved. The information contained in this document has been obtained from sources believed reliable. While Cresa does not doubt its accuracy, Cresa has not verified it and makes no guarantee, warranty, or representation about it. It is your responsibility to independently confirm its accuracy and completeness. Any projections, opinions, assumptions or estimates used are for example only and do not represent the current or future performance of the property. The value of this transaction to you depends on tax and other factors which should be evaluated by your tax, financial and legal advisors. You and your advisors should conduct a careful, independent investigation of the property to determine to your satisfaction the suitability of the property for your needs.

NEC Salome Hwy & Cambridge Ave

Maricopa County



Disclaimer: Cresa © 2025. All rights reserved. The information contained in this document has been obtained from sources believed reliable. While Cresa does not doubt its accuracy, Cresa has not verified it and makes no guarantee, warranty, or representation about it. It is your responsibility to independently confirm its accuracy and completeness. Any projections, opinions, assumptions or estimates used are for example only and do not represent the current or future performance of the property. The value of this transaction to you depends on tax and other factors which should be evaluated by your tax, financial and legal advisors. You and your advisors should conduct a careful, independent investigation of the property to determine to your satisfaction the suitability of the property for your needs.