

FOR LEASE

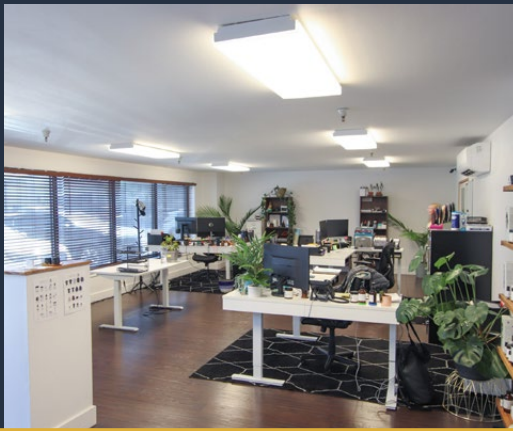
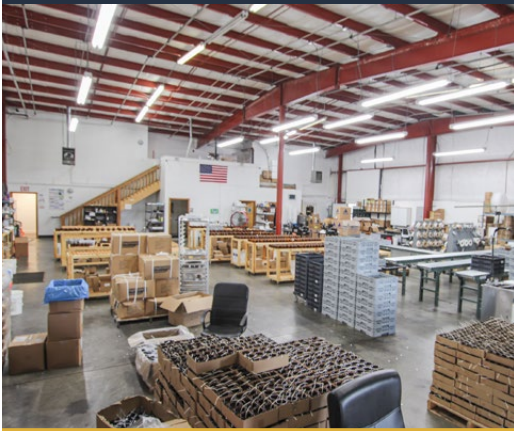
6,000-12,000 SF | \$1.10/SF/MO. NNN

Northeast Bend Industrial Warehouse

62980 Boyd Acres Road, Bend, OR 97701



LOCATED IN BRINSON BUSINESS PARK



Russell Huntamer, CCIM | Jay Lyons, SIOR, CCIM
Eli Harrison, Broker

600 SW Columbia St., Ste. 6100 | Bend, OR 97702

541.383.2444 | www.CompassCommercial.com

COMPASS
COMMERCIAL

**REAL
ESTATE
SERVICES**

FOR LEASE

\$1.10/SF/MO. NNN

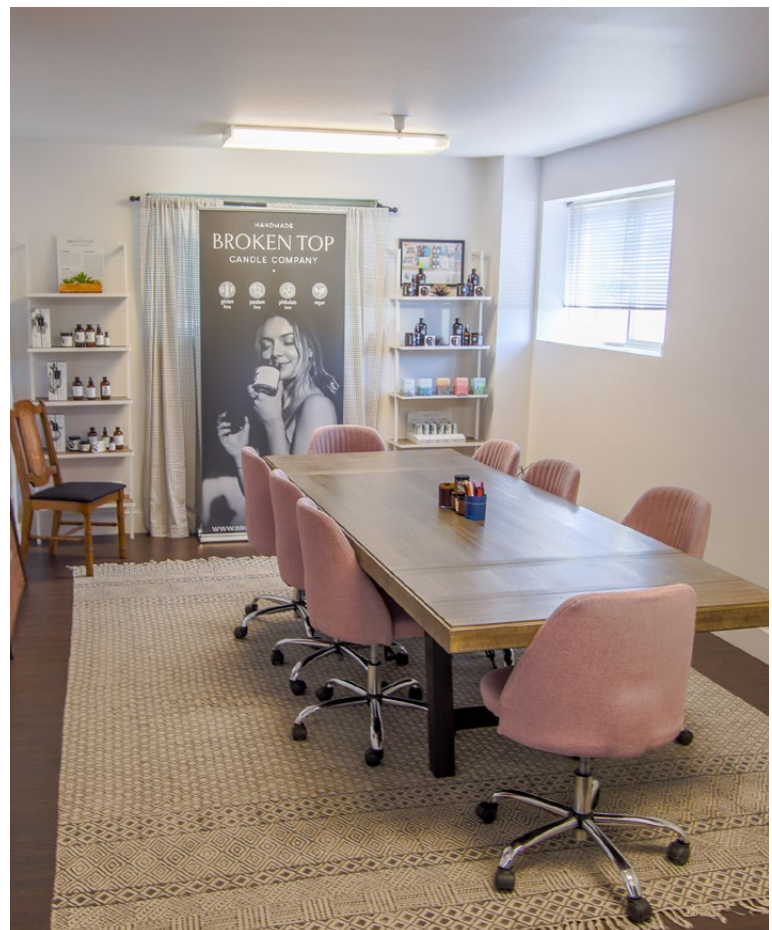
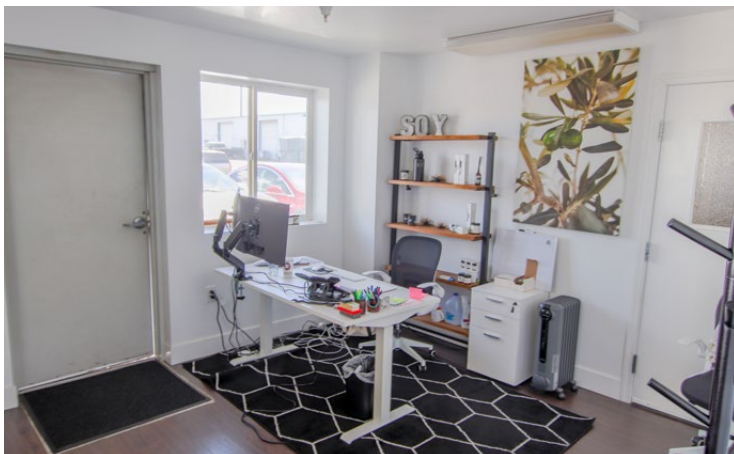
Northeast Bend Industrial Warehouse

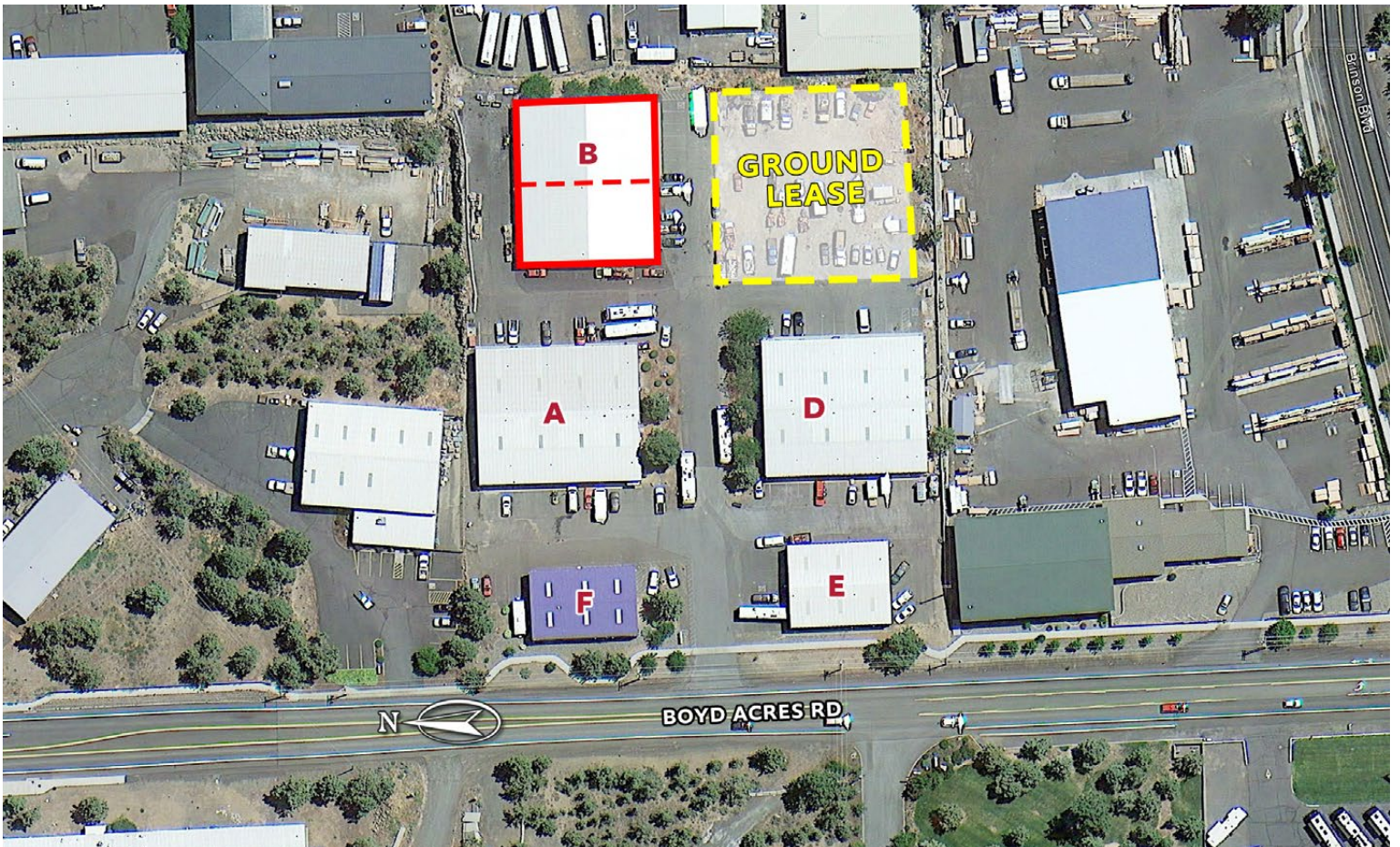
PROPERTY DETAILS

- Avail. Space:** 6,000-12,000 SF
- Lease Rate:** \$1.10/SF/Mo. NNN
- CAMs:** Est. at \$0.23/SF/Mo.
- Bldg. Size:** 12,000 SF
- Zoning:** Light Industrial (IL)
- Date Avail.:** September 1, 2025

HIGHLIGHTS

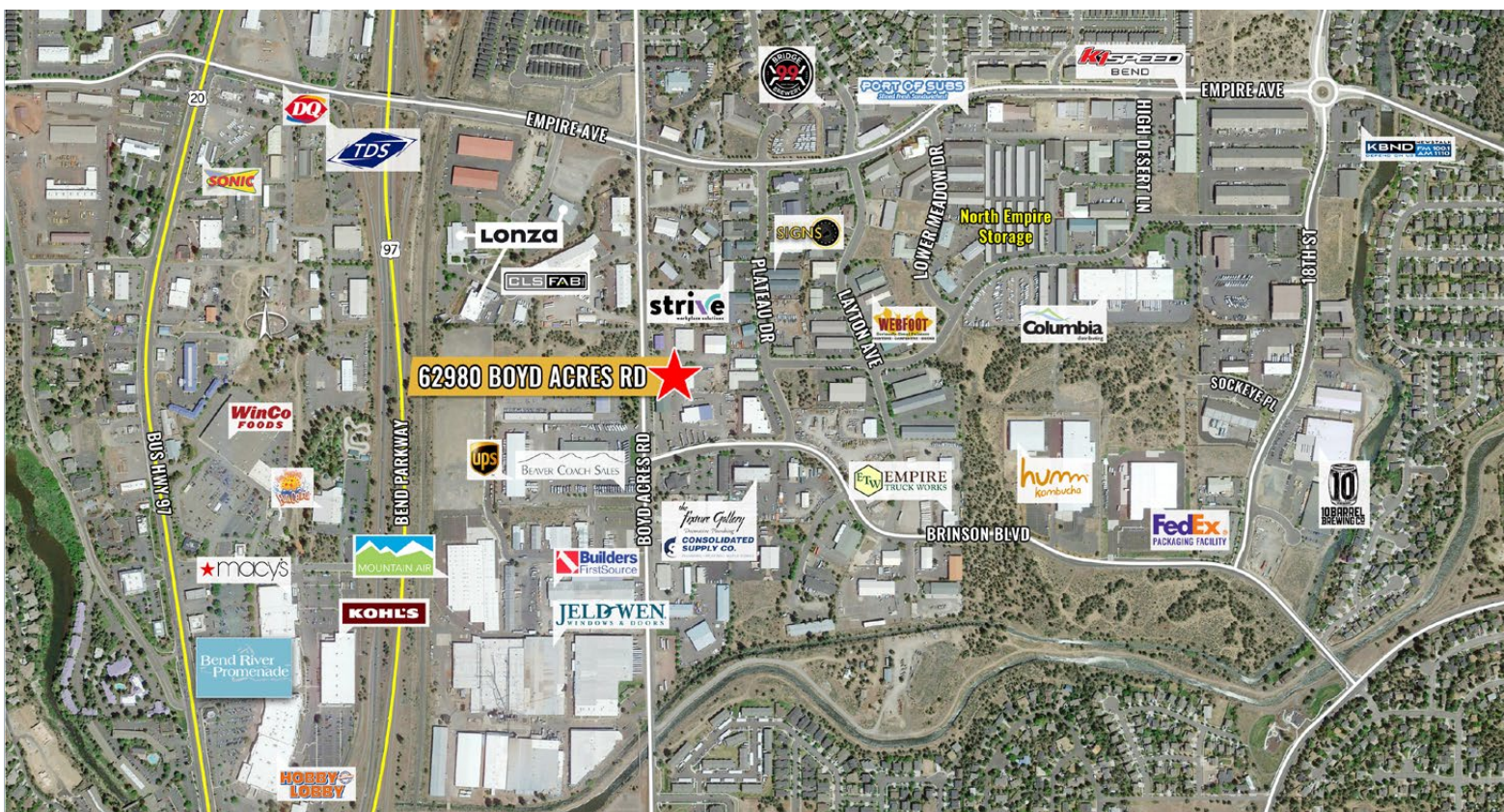
- Easy access off of Empire Ave. and Hwy 97
- Located in Brinson Business Park
- Fully built-out office space and conference room
- Mezzanine for office use and/or storage
- Six 14' roll-up doors
- Large, open bullpen office space with private offices
- Space can be demised





FOR LEASE

62980 Boyd Acres Road, Bend, OR 97701



Brokers are licensed in the state of Oregon. This information has been furnished from sources we deem reliable, but for which we assume no liability. This is an exclusive listing. The information contained herein is given in confidence with the understanding that all negotiations pertaining to this property be handled through Compass Commercial Real Estate Services. All measurements are approximate.



Russell Huntamer, CCIM
Partner, Principal Broker
Cell 541.419.2634
rh@compasscommercial.com



Jay Lyons, SIOR, CCIM
Partner, Principal Broker
Cell 541.410.6519
jlyons@compasscommercial.com



Eli Harrison
Broker
Cell 541.977.2890
eharrison@compasscommercial.com

COMPASS
COMMERCIAL
REAL ESTATE
SERVICES