

FOR LEASE

3807-3811 RICHMOND HWY
RICHMOND, VA 23234

125 YEARS SERVING RICHMOND

POLLARD & BAGBY
REAL ESTATE



DESCRIPTION

This 4,125 square feet of flex/retail storefront space features direct frontage on Richmond Hwy, located less than 2 miles from I-95 N/S interchange. The space provides for numerous retail and industrial type uses with B-3 zoning. The space has three 10' x 10' roll-up doors, approximately ~2,960 square feet of warehouse space, and two individual restrooms.

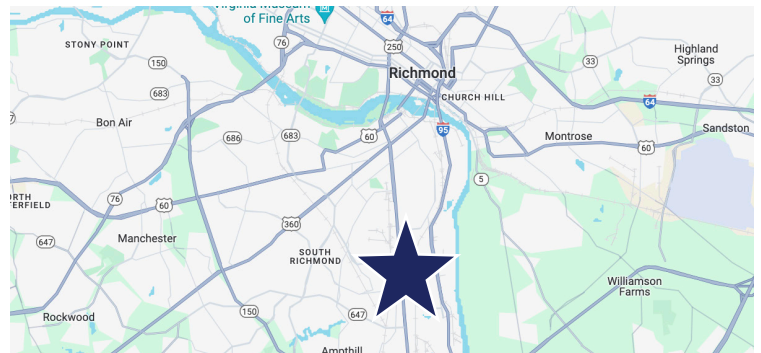
PROPERTY FEATURES

- Contact Agent for pricing
- 14' warehouse clearance
- Building facade signage opportunity
- Approx. 15,000 VPD on Richmond Hwy
- Zoning: B-3 (City of Richmond)

CONTACT INFORMATION

Lebs Breeden

Commercial Sales, Leasing & Property Management Associate
804.536.3933 | lebs.breeden@pollardandbagby.com



Pollard & Bagby, Inc.

Serving Richmond's Real Estate Market Since 1894
2 South 5th Street, P.O. Box 2488, Richmond, VA
O 804.643.9011 | F 804.782.9897 | www.pollardandbagby.com

No warranty or representation is made as to the accuracy of the foregoing information. Terms of sale or lease and availability are subject to change or withdrawal without notice.

FOR LEASE

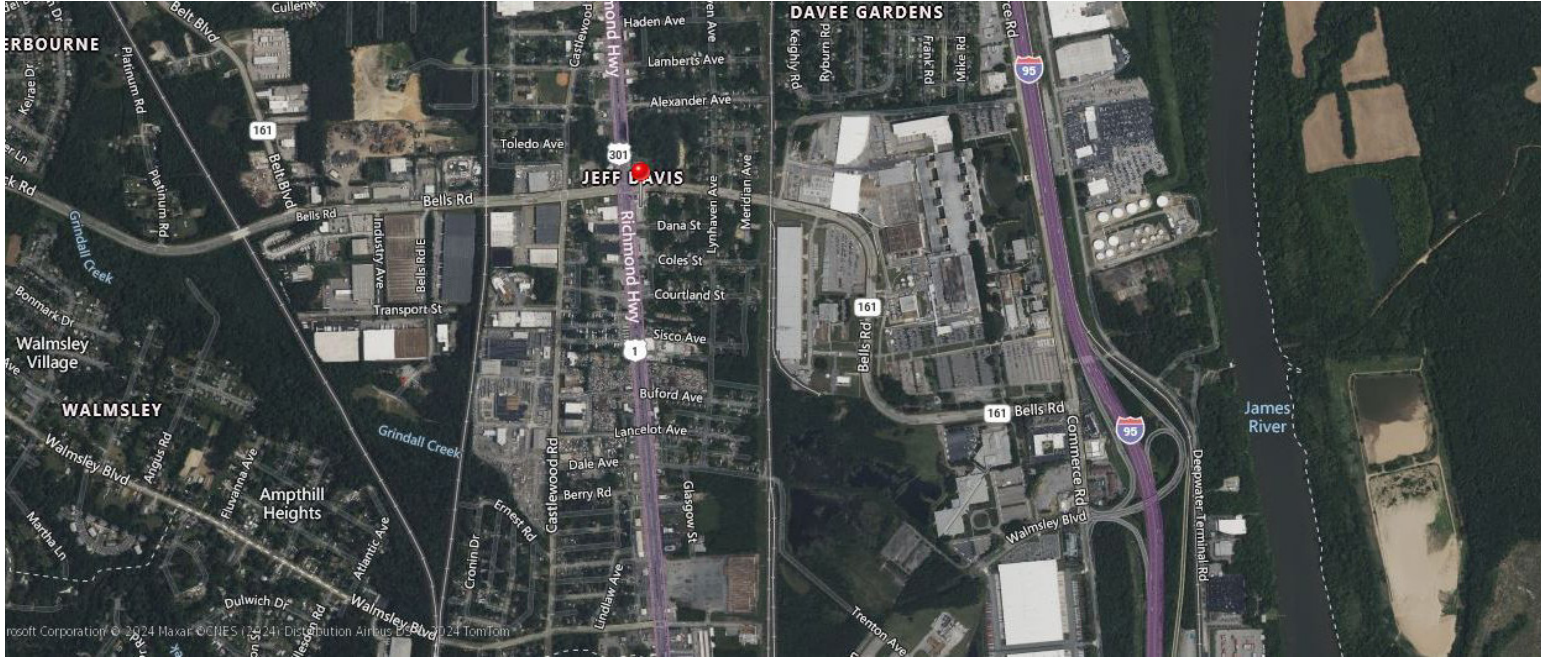
3807-3811 RICHMOND HWY
RICHMOND, VA 23234

125 YEARS SERVING RICHMOND

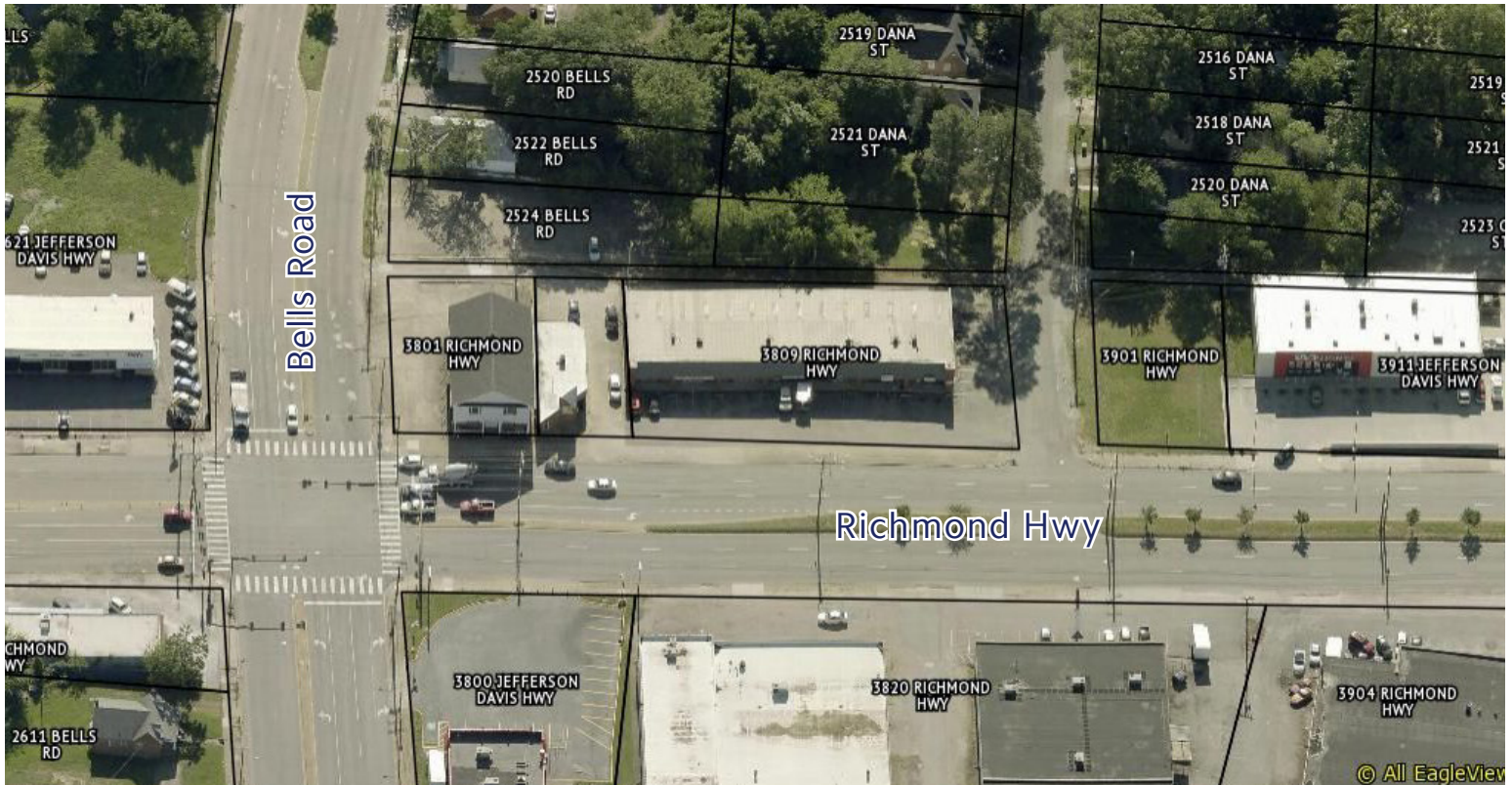
POLLARD & BAGBY

REAL ESTATE

AERIAL MAP



AERIAL PHOTO



No warranty or representation is made as to the accuracy of the foregoing information. Terms of sale or lease and availability are subject to change or withdrawal without notice.