

Miller Rd Parcel 1

2600 W Miller Rd
Lansing, Michigan 48911

Property Highlights

- Price reduced!
- 229 ft. of frontage on Miller Rd.
- Just off I-96 exit 101
- Cell tower not included
- 4.87 acres
- Land Contract Terms Available

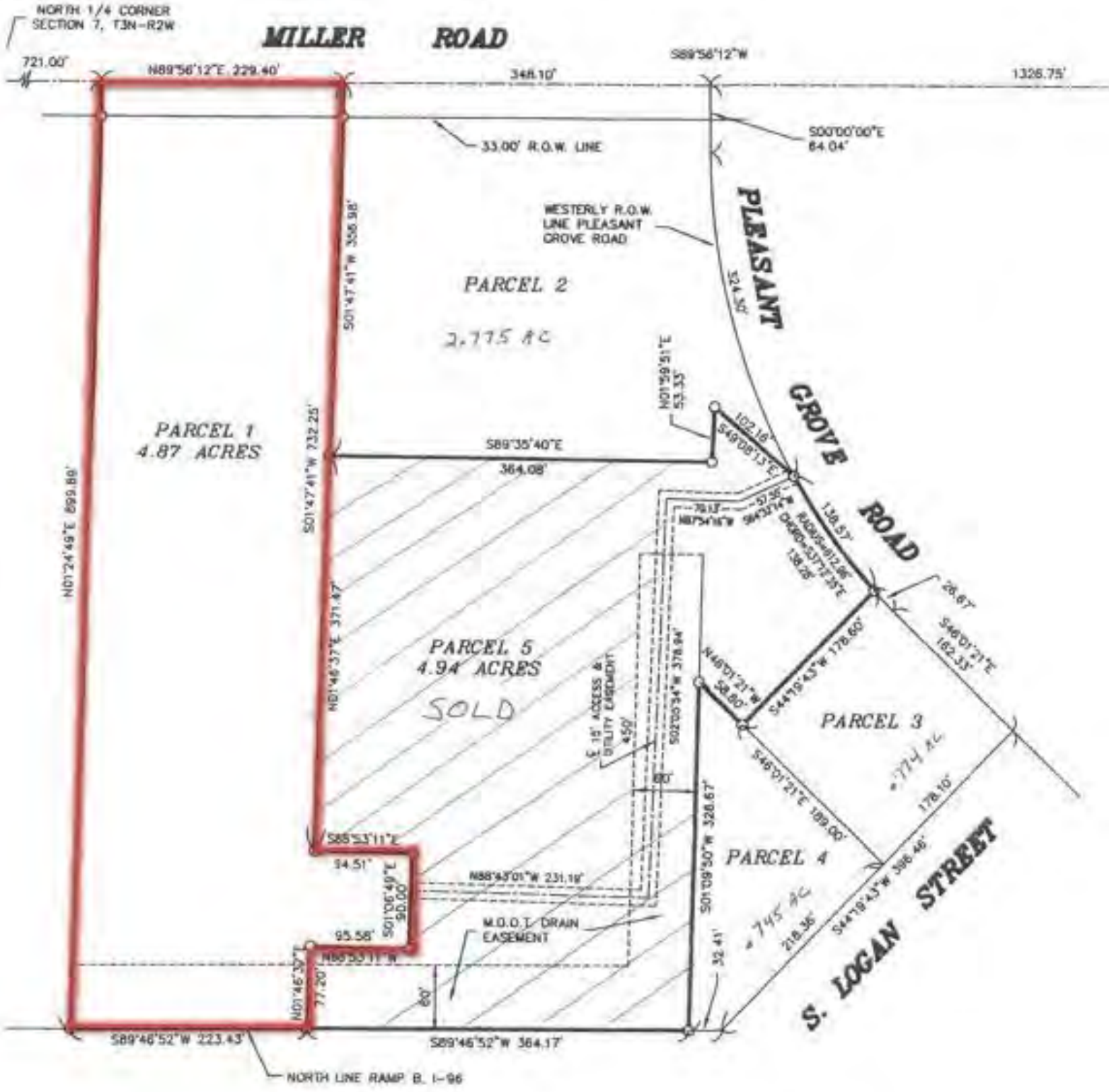
Offering Summary

Sale Price:	\$159,900
Lot Size:	4.87 Acres

For More Information

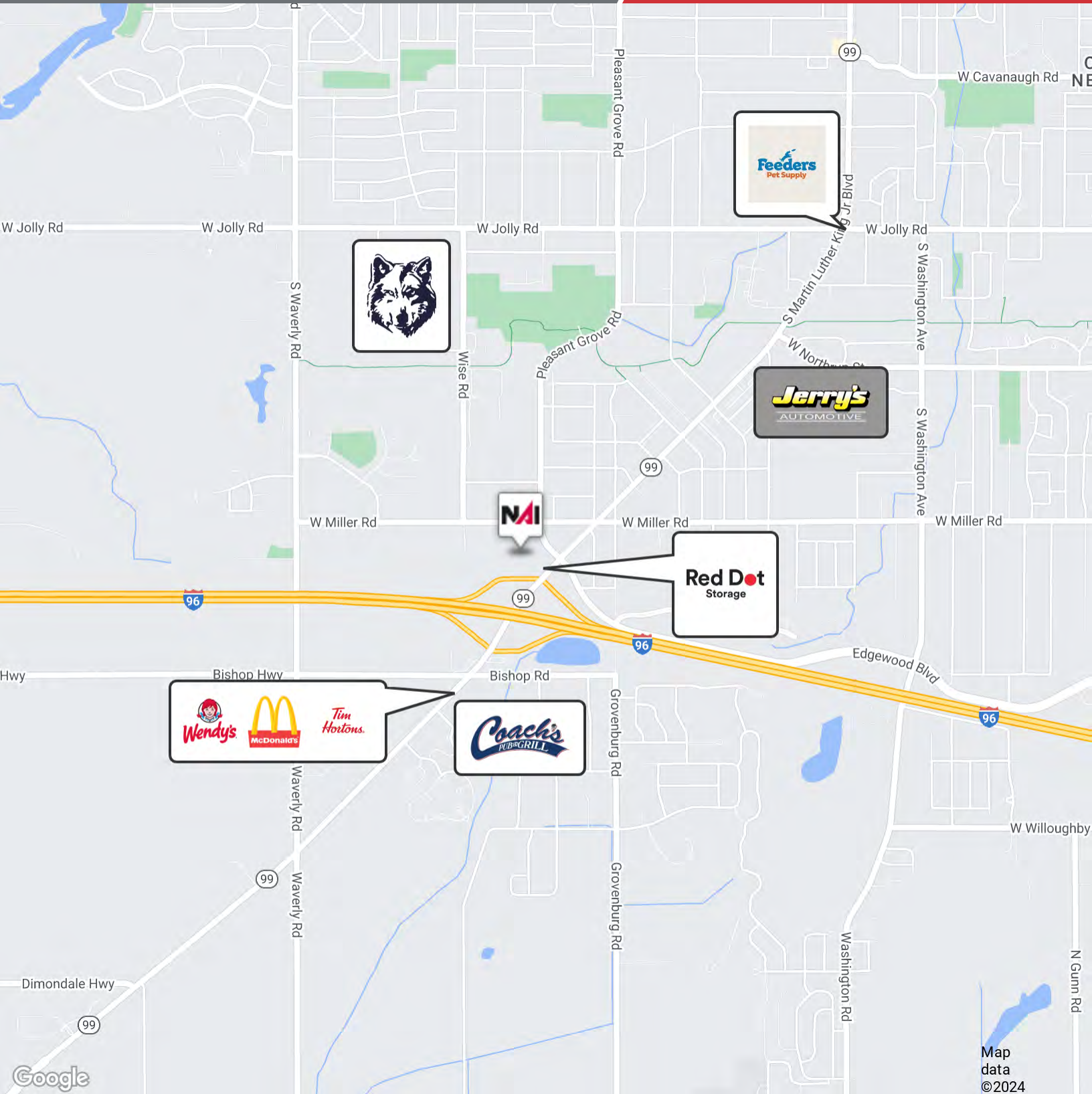
Gino Baldino

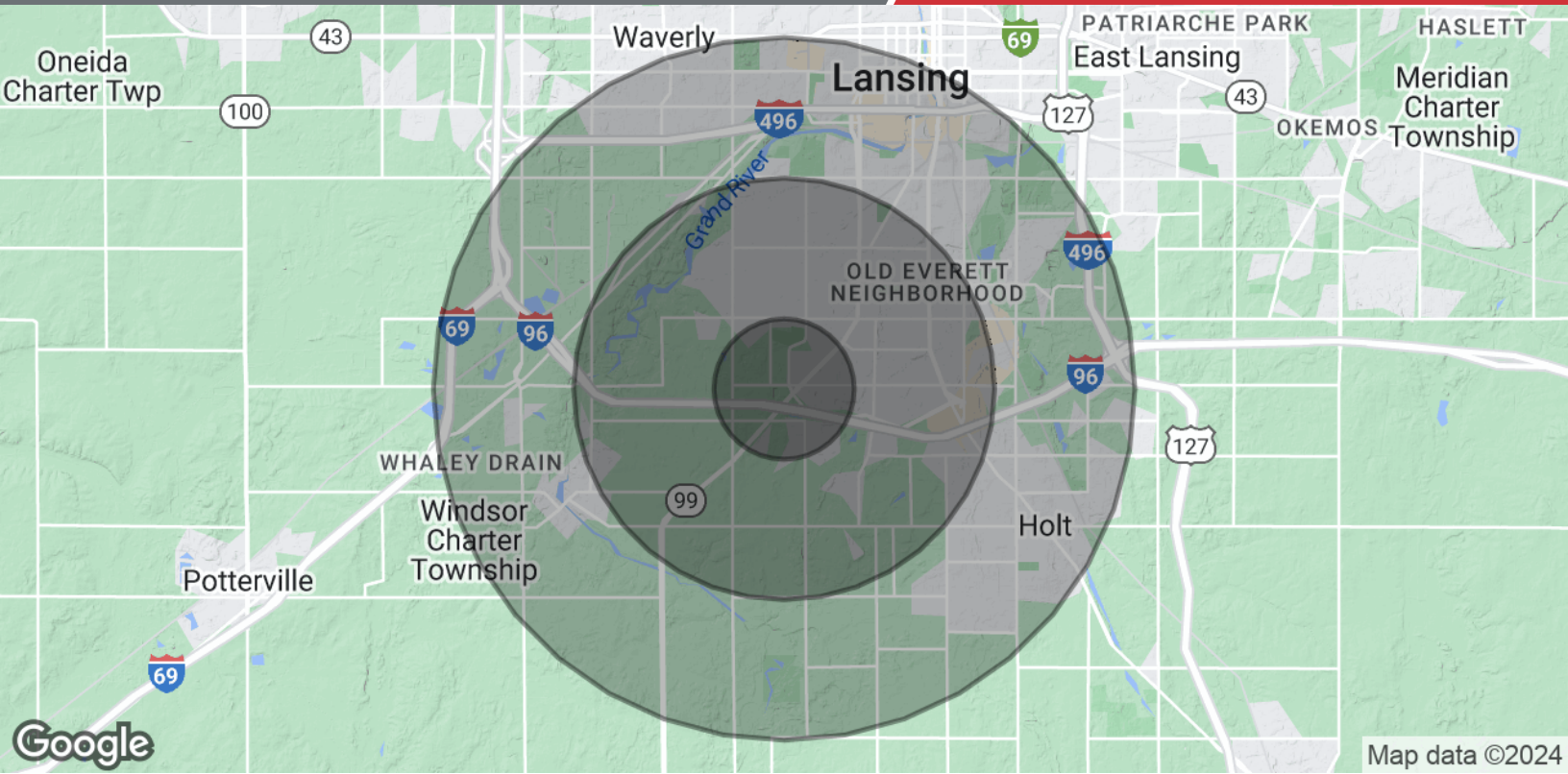
O: 517 487 9222 | C: 517 202 2137
gbaldino@naimidmichigan.com



NO WARRANTY OR REPRESENTATION, EXPRESS OR IMPLIED, IS MADE AS TO THE ACCURACY OF THE INFORMATION CONTAINED HEREIN, AND THE SAME IS SUBMITTED SUBJECT TO ERRORS, OMISSIONS, CHANGE OF PRICE, RENTAL OR OTHER CONDITIONS, PRIOR SALE, LEASE OR FINANCING, OR WITHDRAWAL WITHOUT NOTICE, AND OF ANY SPECIAL LISTING CONDITIONS IMPOSED BY OUR PRINCIPALS NO WARRANTIES OR REPRESENTATIONS ARE MADE AS TO THE CONDITION OF THE PROPERTY OR ANY HAZARDS CONTAINED THEREIN ARE INTENDED TO BE IMPLIED

2149 Jolly Road, Suite 200
Okemos, MI 48864
517 487 9222 tel
naimidmichigan.com





Population	1 Mile	3 Miles	5 Miles
Total Population	10,405	63,922	137,243
Average Age	29.6	34.0	34.6
Average Age (Male)	21.3	30.4	32.3
Average Age (Female)	34.1	37.1	36.6
Households & Income	1 Mile	3 Miles	5 Miles
Total Households	3,705	24,875	57,156
# of Persons per HH	2.8	2.6	2.4
Average HH Income	\$42,940	\$51,589	\$51,444
Average House Value	\$114,443	\$118,690	\$127,410

2020 American Community Survey (ACS)