



ESTERO RIDGE

FOR LEASE • PRIME RETAIL OPPORTUNITY
20041 TAMiami TRl • ESTERO, FL 33928



CONTACT US:

DOUG OLSON
Partner
239.334.3040
doug.olson@trinitycre.com

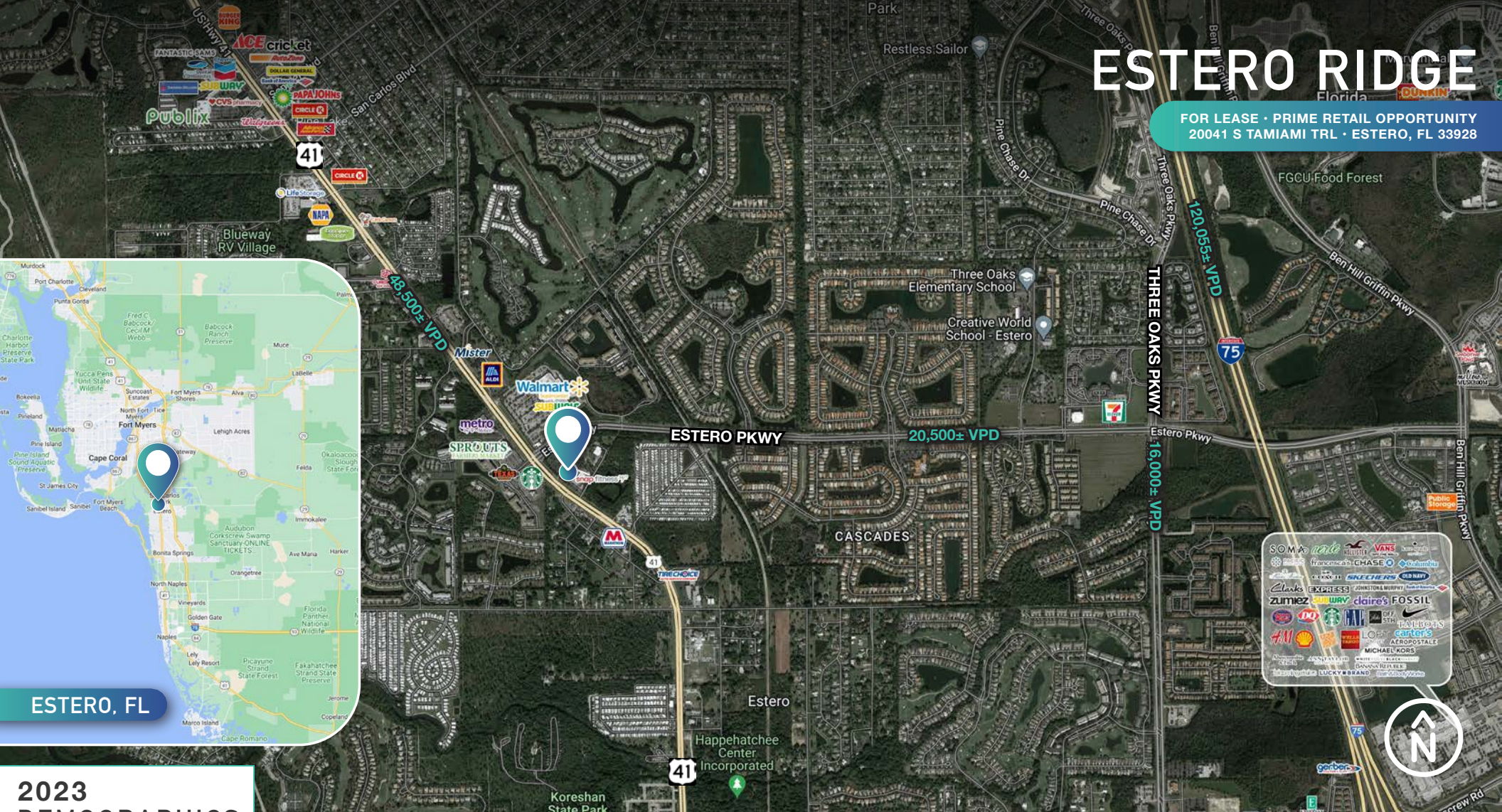
JOHN PAULICH IV
Senior Advisor
239.334.3040
john.paulich@trinitycre.com

DARREN MOORE
Senior Advisor
239.334.3040
darren.moore@trinitycre.com



ESTERO RIDGE

FOR LEASE · PRIME RETAIL OPPORTUNITY
20041 S TAMIAMI TRL · ESTERO, FL 33928



ESTERO, FL

2023 DEMOGRAPHICS ESTERO RIDGE

	1 MILE	3 MILE	5 MILE
AVERAGE H.H INCOME	\$72,752	\$79,137	\$99,503
POPULATION	7,544	52,062	79,484
EMPLOYMENT DENSITY	1,410	13,334	32,691

PROPERTY FEATURES

LEASE RATE	CALL FOR DETAILS
GLA	50,784± SF
AVAILABLE	5,433± SF
ZONING	CC (Lee County)
LOCATION	The subject site is located on the SEC of Estero Pkwy & US 41 in Estero, FL

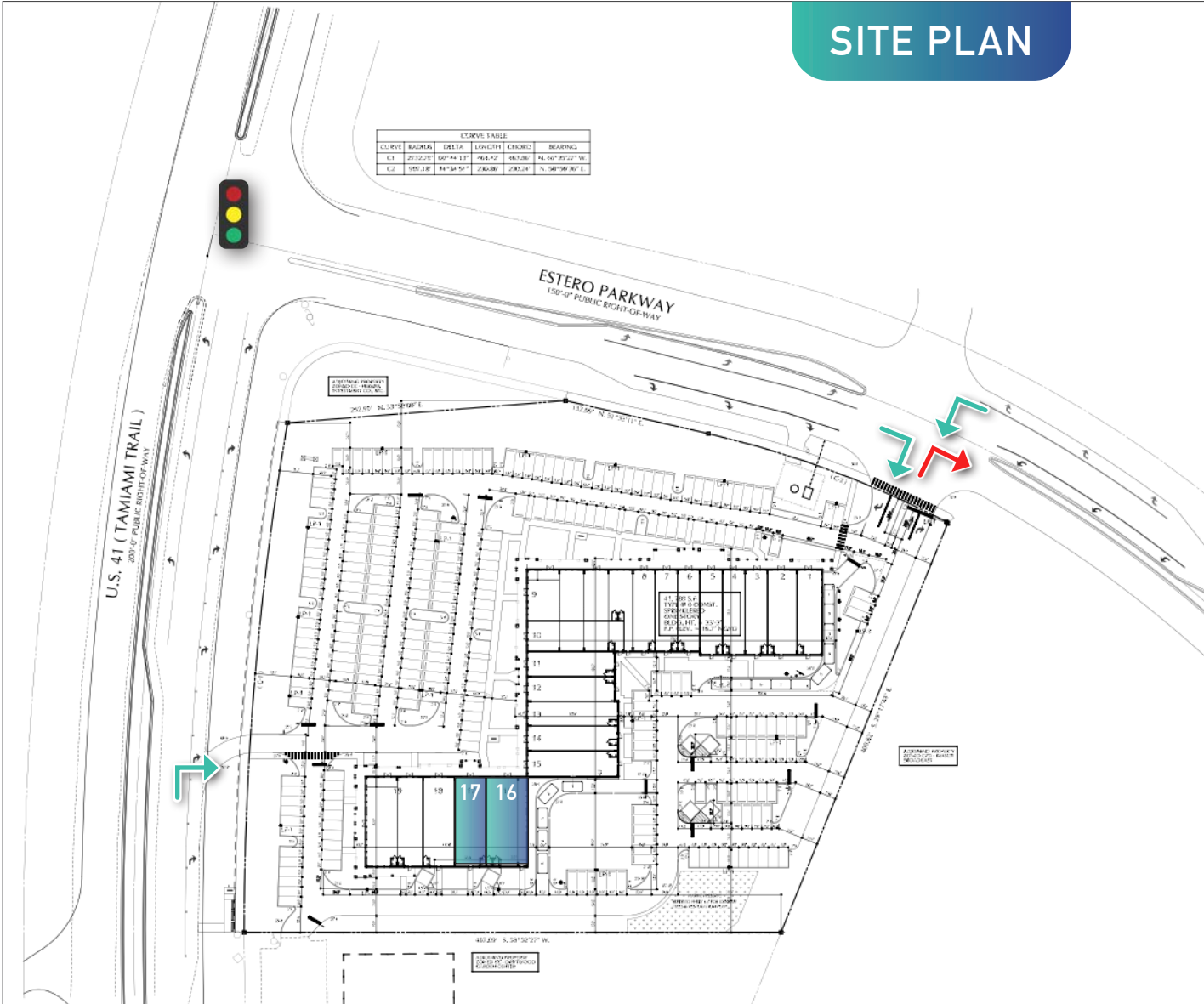


trinitycre.com
9450 Corkscrew Palms Cir • Suite 101 • Estero, FL 33928
© 2023 Trinity Commercial Group
This information is considered accurate, but not guaranteed.

ESTERO RIDGE

FOR LEASE • PRIME RETAIL OPPORTUNITY
20041 S TAMiami TRl • ESTERO, FL 33928

SITE PLAN



UNIT	TENANT
1&2	THRIVE CHURCH
3	SWFL Inc.
4	MESSAGE POINT
5	@ NAILS
6	LASH AND CO
7	ESTERO BICYCLE CAFE
8	ESTERO FAMILY SALON
9	RUSTY'S RAW BAR & GRILL
10-12	FLORAL ARTISTRY
13	PHARMACY GO
14	HAVEN 22
15	ENTERPRISE
16 & 17	AVAILABLE - 5,433± SF
18&19	ZINO PIZZA



trinitycre.com

9450 Corkscrew Palms Cir • Suite 101 • Estero, FL 33928

© 2023 Trinity Commercial Group

This information is considered accurate, but not guaranteed.

