

# FLEX FOR LEASE 3909 EASTERN AVE

Baltimore, MD 21224

Available: 3,500 SF



## LISTING DATA

**TOTAL SF:** 3,500 SF

## ECONOMIC DATA

**LEASE RATE:** Call For Info

## PROPERTY INFORMATION

**COUNTY:** Baltimore City

**MARKET:** Baltimore

## BUILDING DATA

**TOTAL BUILDING SF:** 7,500 SF

**YEAR BUILT:** 1910

**RENOVATED:** 2024

**ZONING:** C-1

## PROPERTY OVERVIEW

A 3,500 SF warehouse with a small mezzanine.

## PROPERTY HIGHLIGHTS

- 17.5 Clear Height
- Newly renovated warehouse
- 100% new HVAC
- 2 new high finish restrooms
- New LED lights
- Potentially for 2 at grade drive in doors
- Potential to add additional windows
- Parking available in rear.

Kate Jordan, SIOR  
Principal  
410.336.5314  
kjordan@lee-associates.com

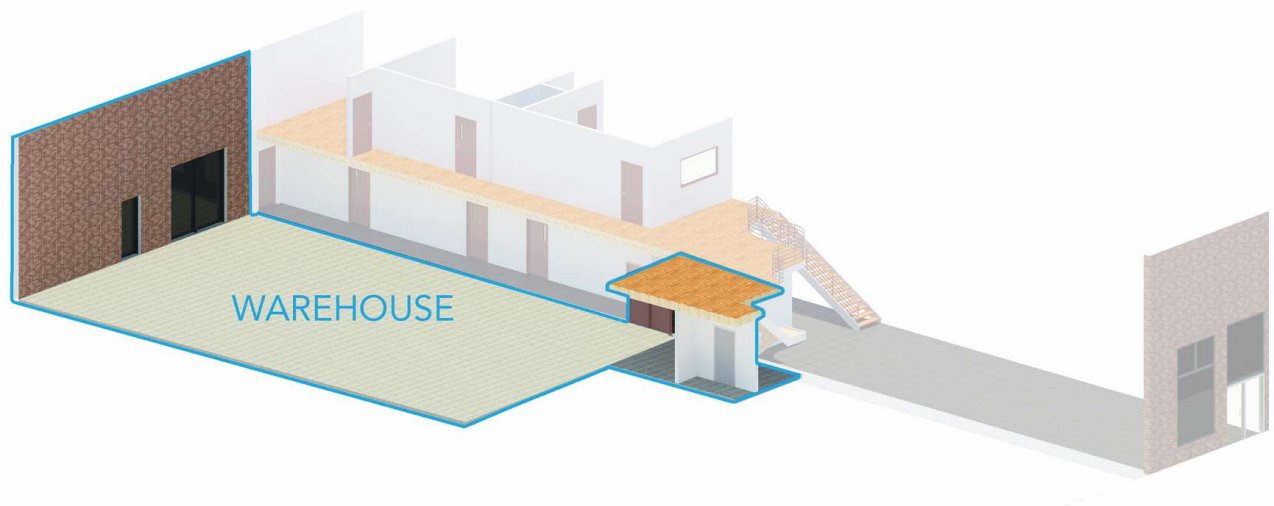
Samantha Eckels  
Associate  
443.741.4047  
seckels@lee-associates.com

All information furnished regarding property for sale, rental or financing is from sources deemed reliable, but no warranty or representation is made to the accuracy thereof and same is submitted to errors, omissions, change of price, rental or other conditions prior to sale, lease or financing or withdrawal without notice. No liability of any kind is to be imposed on the broker herein.

**FLEX FOR LEASE**  
**3909 EASTERN AVE**

Baltimore, MD 21224

Available: 3,500 SF



**Kate Jordan, SIOR**  
Principal  
410.336.5314  
kjordan@lee-associates.com

**Samantha Eckels**  
Associate  
443.741.4047  
seckels@lee-associates.com

All information furnished regarding property for sale, rental or financing is from sources deemed reliable, but no warranty or representation is made to the accuracy thereof and same is submitted to errors, omissions, change of price, rental or other conditions prior to sale, lease or financing or withdrawal without notice. No liability of any kind is to be imposed on the broker herein.

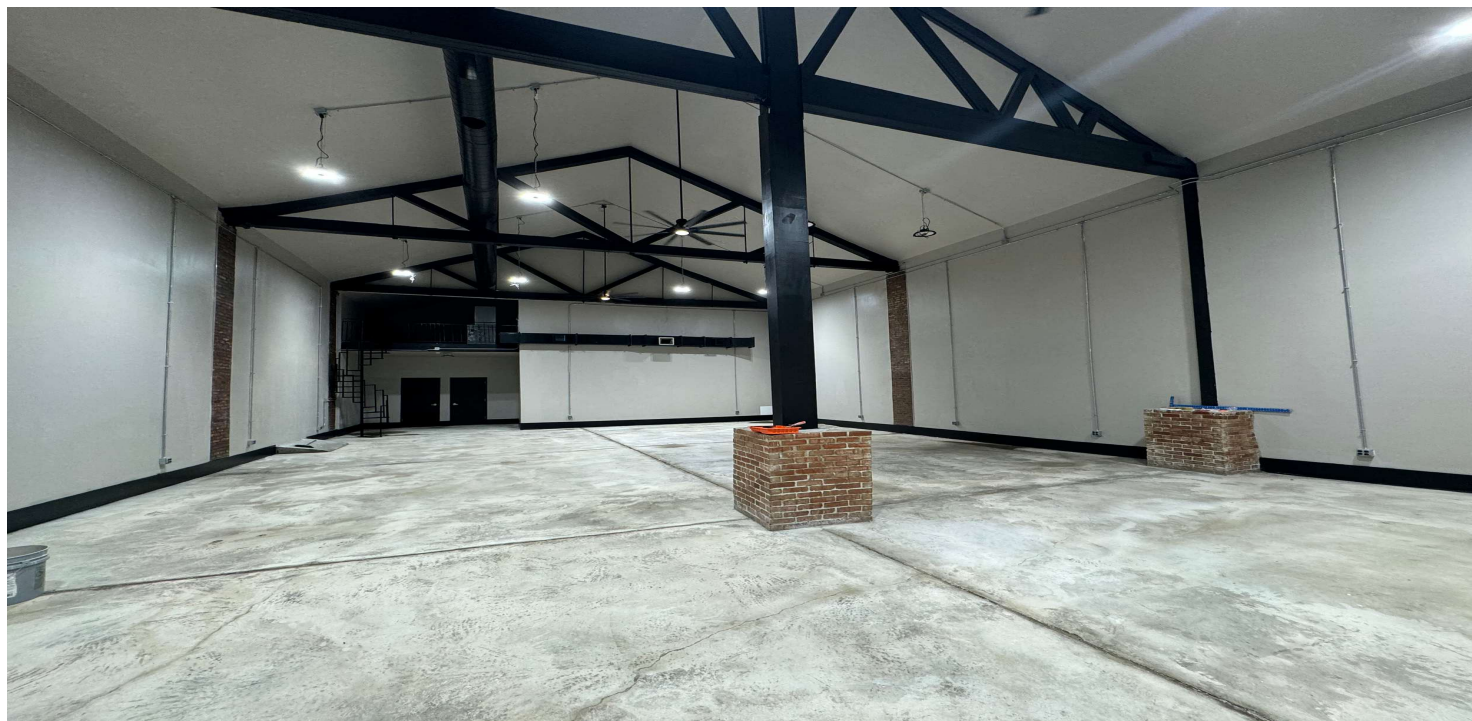


**FLEX FOR LEASE**  
**3909 EASTERN AVE**

Baltimore, MD 21224

Available: 3,500 SF

**LEE & ASSOCIATES**  
COMMERCIAL REAL ESTATE SERVICES



**Kate Jordan, SIOR**  
**Principal**  
**410.336.5314**  
[kjordan@lee-associates.com](mailto:kjordan@lee-associates.com)

**Samantha Eckels**  
**Associate**  
**443.741.4047**  
[seckels@lee-associates.com](mailto:seckels@lee-associates.com)

All information furnished regarding property for sale, rental or financing is from sources deemed reliable, but no warranty or representation is made to the accuracy thereof and same is submitted to errors, omissions, change of price, rental or other conditions prior to sale, lease or financing or withdrawal without notice. No liability of any kind is to be imposed on the broker herein.