

Specifications

±7,000 SF
AVAILABLE SPACE

±14'
CEILING HEIGHT

3 Drive-In Doors
LOADING

Onsite
PARKING

±0.59 AC (Block 404, Lot 12)
LOT SIZE

Climate Control
New HVAC System
COMMENTS

\$6,920.95 (2024)
TAXES

~~\$1.3M~~
SALE PRICE

\$1.1M
REDUCED SALE PRICE

4.6 Miles to I-95
6.9 Miles to US Route 1
9.2 Miles to NE Philadelphia Airport
10.3 Miles to I-295
ACCESSIBILITY

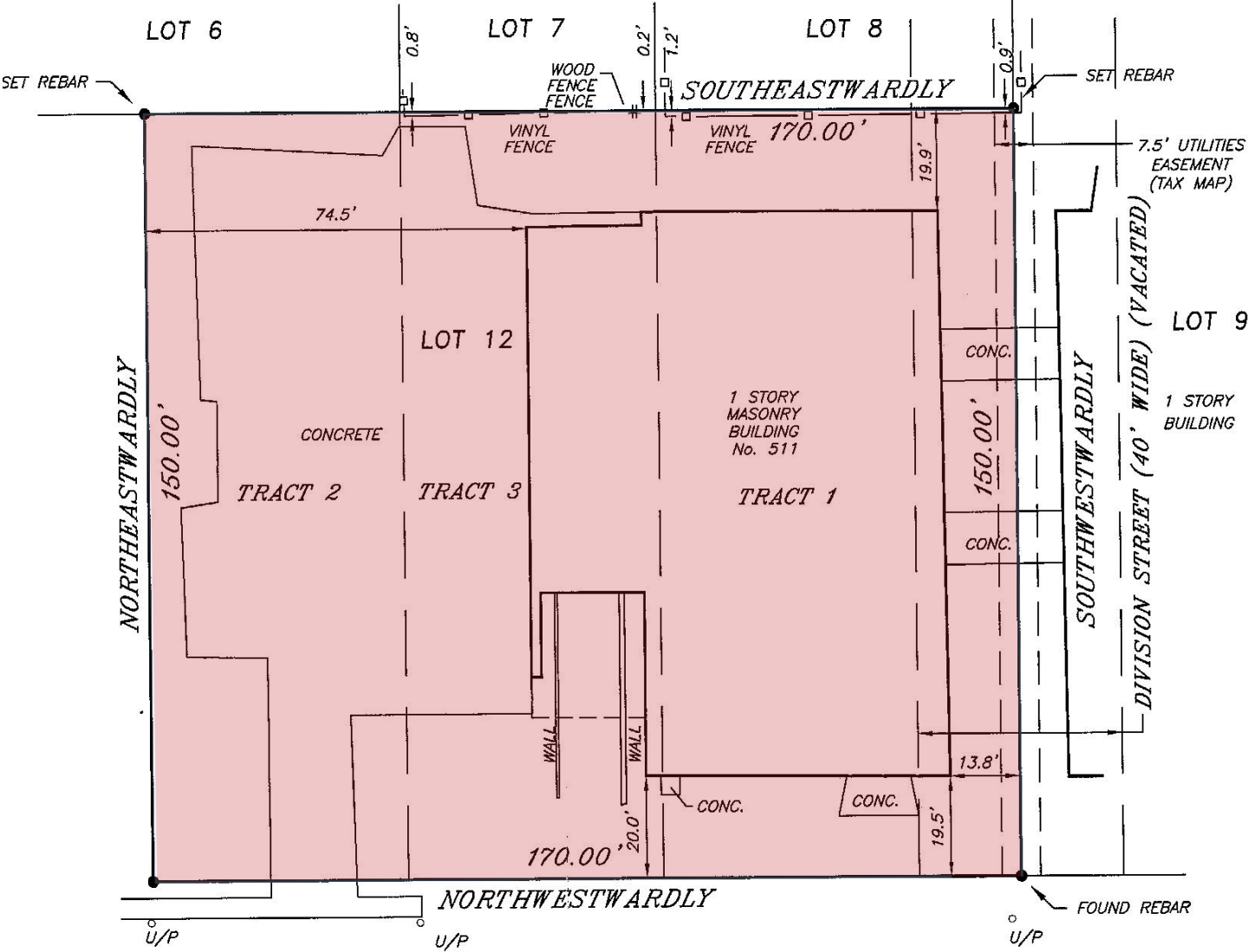
For additional property information or to arrange an inspection,
please contact the exclusive broker:

Juan Disla
Director
973.379.6644 x 226
JD@blauberg.com



For additional property information or to arrange an inspection,
please contact the exclusive broker:

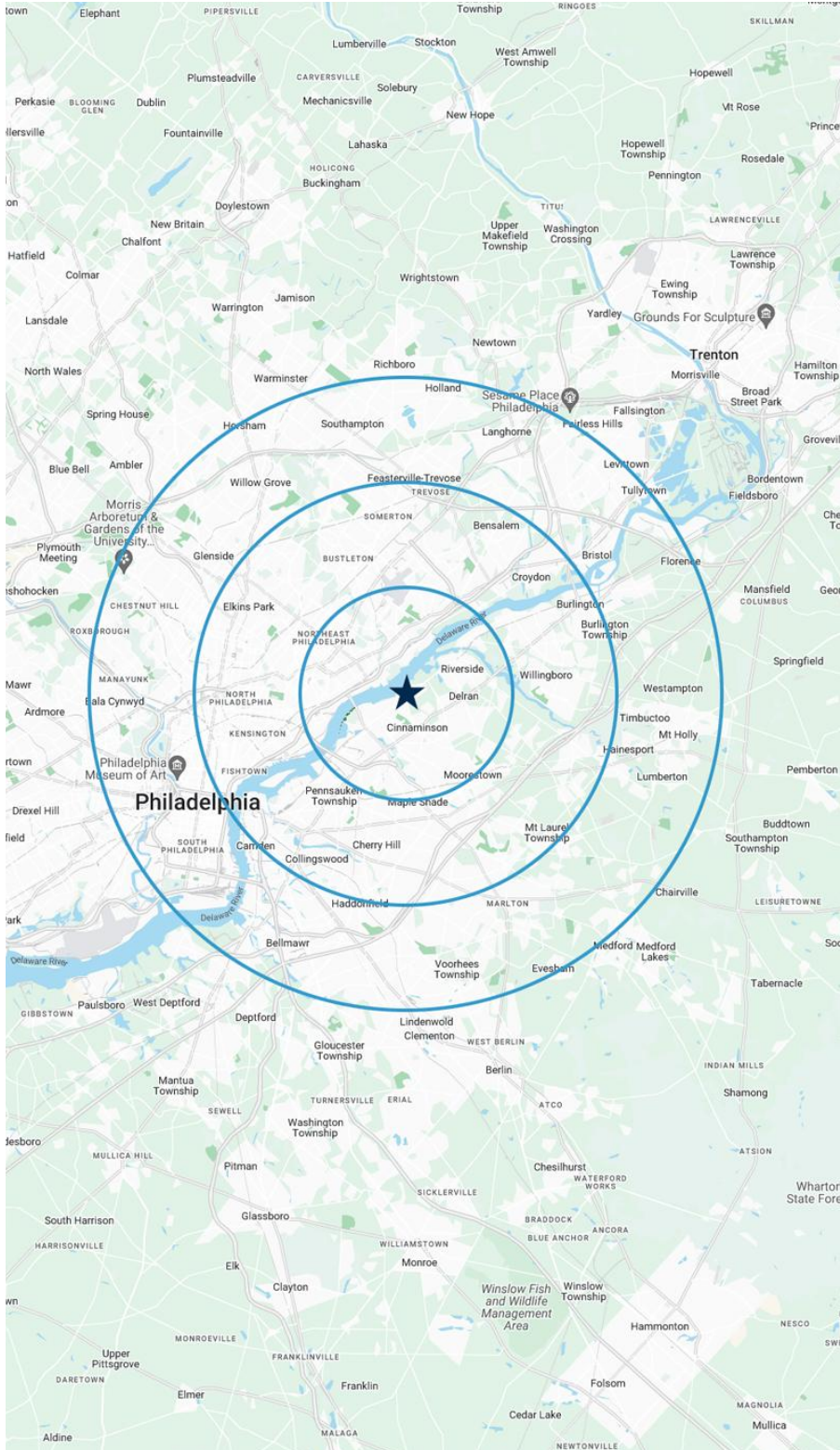
Juan Disla
Director
973.379.6644 x 226
JD@blauberg.com



NORTH READ (50' WIDE) AVENUE

For additional property information or to arrange an inspection,
please contact the exclusive broker:

Juan Disla
Director
973.379.6644 x 226
JD@blauberg.com



5 MILES

- Total Population: 415,331
- Households: 155,159
- Median Household Income: \$73,020
- Average Household Size: 2.6
- Transportation to Work: 203,384
- Labor Force: 328,295

10 MILES

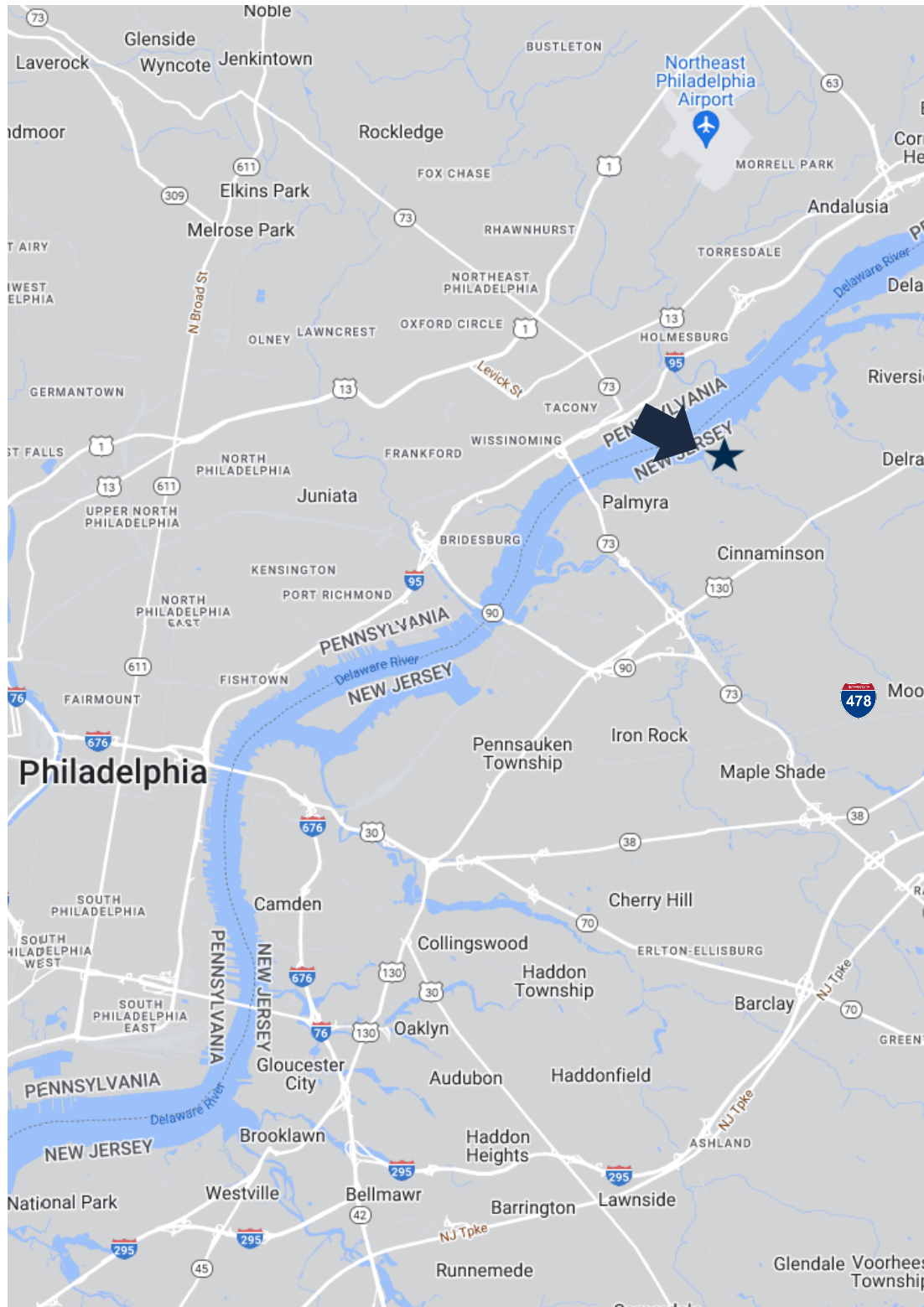
- Total Population: 1.75M
- Households: 704,305
- Median Household Income: \$77,407
- Average Household Size: 2.4
- Transportation to Work: 881,173
- Labor Force: 1.42M

15 MILES

- Total Population: 3.04M
- Households: 1.23M
- Median Household Income: \$82,679
- Average Household Size: 2.4
- Transportation to Work: 1.57M
- Labor Force: 2.48M

For additional property information or to arrange an inspection,
please contact the exclusive broker:

Juan Disla
Director
973.379.6644 x 226
JD@blauberg.com



ACCESSIBILITY



4.6 MI
I-95



6.9 MI
US Route 1



9.2 MI
NE Philadelphia
Airport



10.3 MI
I-295

For additional property information or to arrange an inspection,
please contact the exclusive broker:

Juan Disla
Director
973.379.6644 x 226
JD@blauberg.com