

# 1181 BROADWAY

As exclusive leasing agents, we are pleased to offer the following prime space for sublease:

Entire Penthouse & Mezzanine - 3,700 RSF

Sublease through 5/30/2027

Immediate Possession

Incredibly Unique Space

Loft Style Space with Oversized Windows with Ample Natural Light

Large Wet Pantry on PH Floor and on Mezzanine

Two Bathrooms

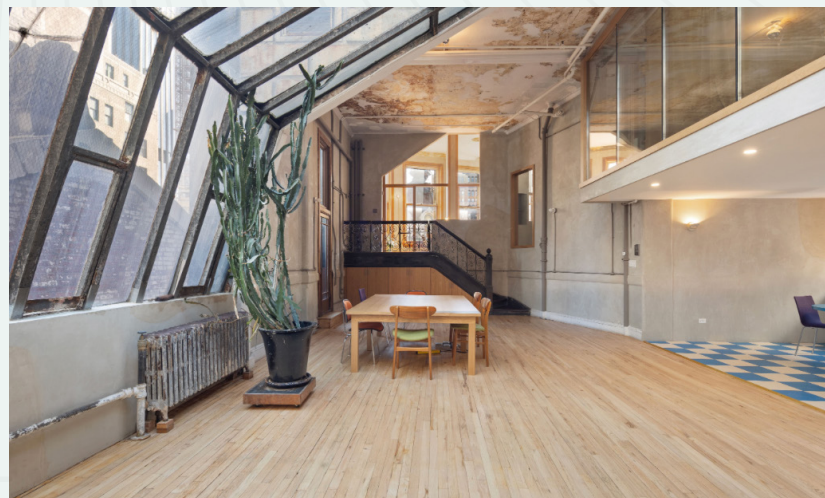
Private Outdoor Terrace

One Glass Executive Office/Meeting Room on Mezzanine

Two Offices/Small Meeting Rooms

One Phone Booth Room

Open Space for 10-15 people





**DENNIS SOMECK**  
Exec. Managing Director | Principal  
O: 212.776.1270  
C: 917.653.1177  
dsomeck@lee-associates.com

**JUSTIN MYERS**  
Exec. Managing Director | Principal  
O: 212.776.1281  
C: 619.840.7360  
jmyers@lee-associates.com

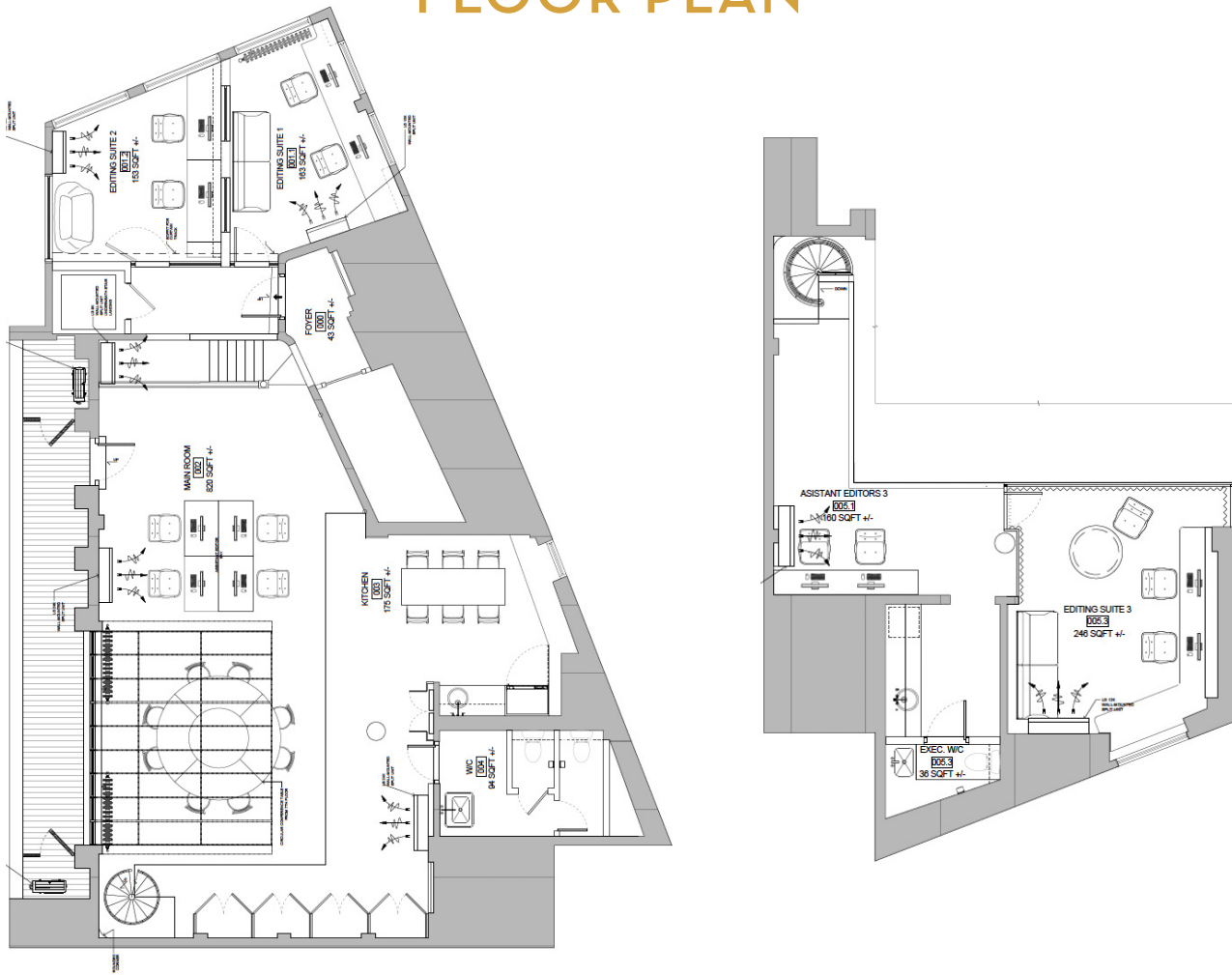
**RACHEL KIRKHAM**  
Associate  
O: 212.776.1279  
C: 919.605.6797  
rkirkham@lee-associates.com

All information supplied is from sources deemed reliable and is furnished subject to errors, omissions, modifications, removal of the listing for sale or lease, and to any listing conditions, including the rates and manner of payment of commissions for particular offerings imposed by principals or agreed by this Company, the terms of which are available to principals or duly licensed brokers. Any square footage dimensions set forth are approximate.

# 1181 BROADWAY



## FLOOR PLAN



**DENNIS SOMECK**  
Exec. Managing Director | Principal  
O: 212.776.1270  
C: 917.653.1177  
dsomeck@lee-associates.com

**JUSTIN MYERS**  
Exec. Managing Director | Principal  
O: 212.776.1281  
C: 619.840.7360  
jmyers@lee-associates.com

**RACHEL KIRKHAM**  
Associate  
O: 212.776.1279  
C: 919.605.6797  
rkirkham@lee-associates.com

