

MEDICAL SPACE FOR LEASE

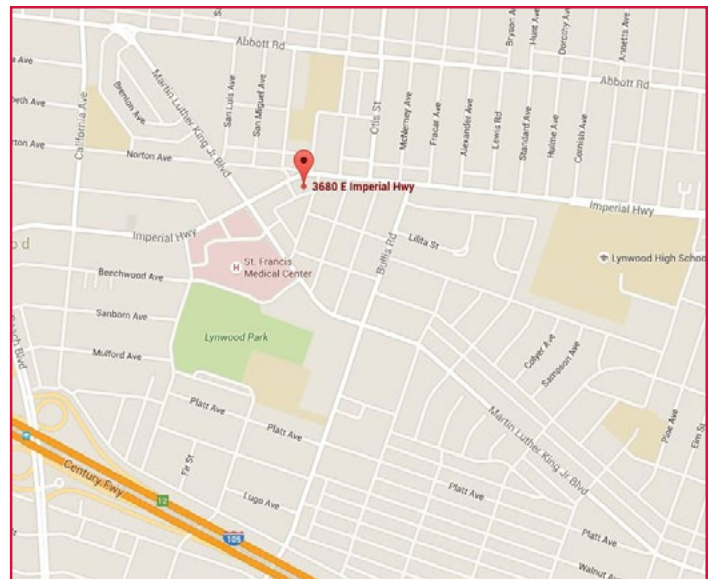
3680 EAST IMPERIAL HIGHWAY

LYNWOOD · CALIFORNIA · 90262



PROPERTY FEATURES

- » 5- Story, Class "B" Medical Office Building
- » Suites Ranging From 933 RSF - 3,584 RSF
- » Convenient Access To St. Francis Medical Center
- » Convenient Access To The 405,710, 110 & 91 Fwys
- » 24-Hour Access
- » Monument Signage Available
- » Parking Ratio 2.5/1000, Covered Parking at Prevailing Monthly Rate
- » Free Ample Surface Parking Available For Visitors
- » Walking Distance To Several Restaurants And Retail Amenities



FOR MORE INFORMATION, PLEASE CONTACT:

 **LEE &
ASSOCIATES**
COMMERCIAL REAL ESTATE SERVICES

TOM TORABI
Principal | Lic ID# 00936845
PH: 310.965.1754
E: ttorabi@leelalb.com

LEE & ASSOCIATES
Los Angeles - Long Beach, Inc.
1411 West 190th Street, Suite 450
Gardena, CA 90248

Floor/Suite	Sq Ft	Asking Rate	Comments
250	2,098 SF	\$2.50 PSF FSG	3 exam rooms and open area with sink
300	3,584	\$2.50 PSF FSG	Medical Space
460	966 SF	\$2.50 PSF FSG	Medical Space
510	932 SF	\$2.50 PSF FSG	Medical Space

AERIAL



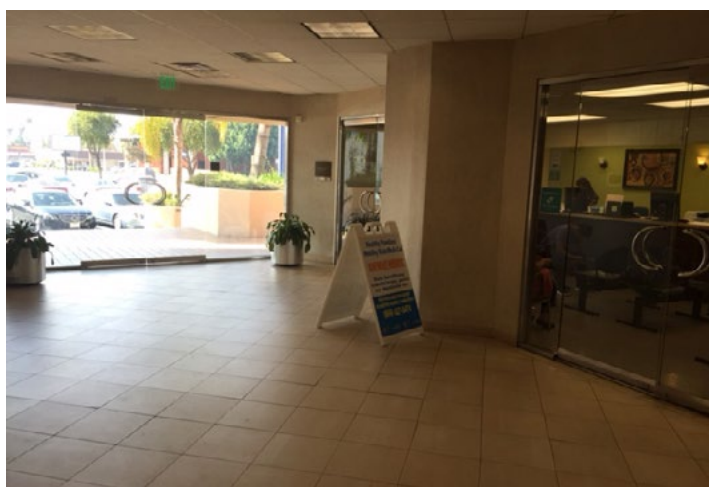
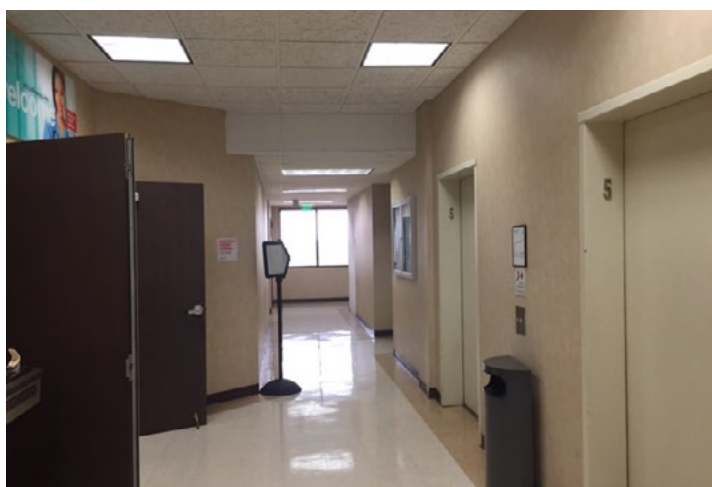
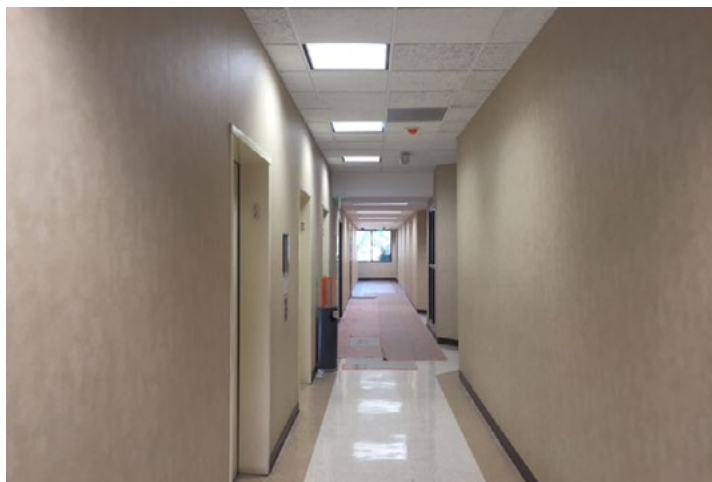
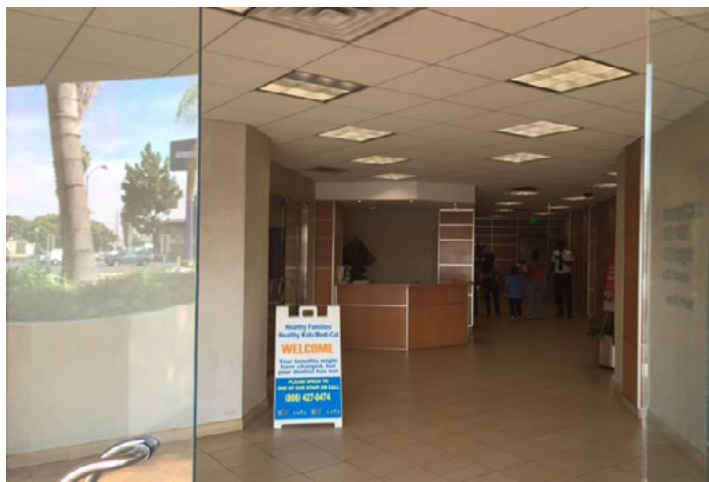
FOR MORE INFORMATION, PLEASE CONTACT:

LEE & ASSOCIATES
COMMERCIAL REAL ESTATE SERVICES

TOM TORABI
Principal | Lic ID# 00936845
PH: 310.965.1754
E: ttorabi@leelalb.com

LEE & ASSOCIATES
Los Angeles - Long Beach, Inc.
1411 West 190th Street, Suite 450
Gardena, CA 90248

PHOTOS



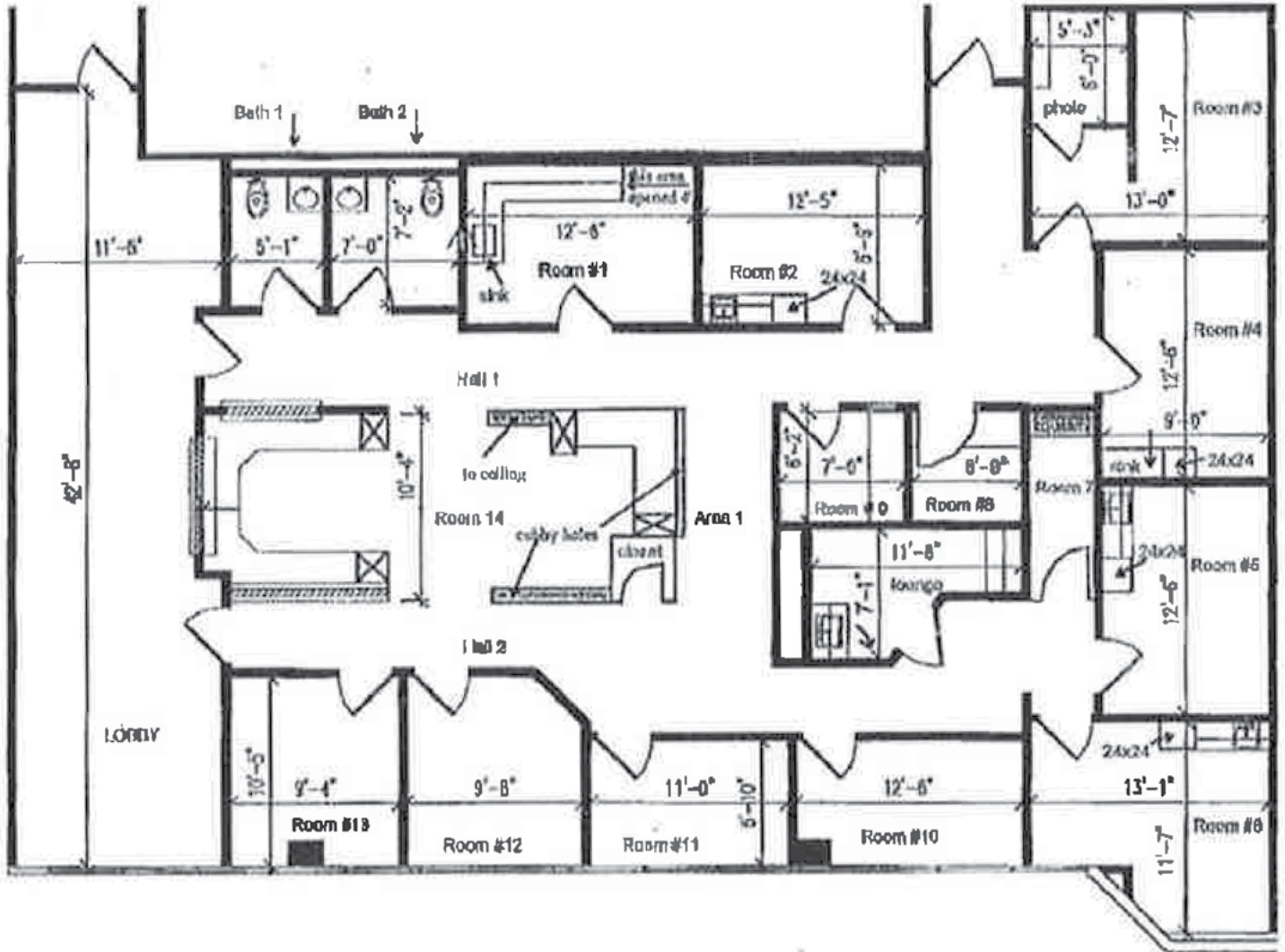
FOR MORE INFORMATION, PLEASE CONTACT:

 **LEE & ASSOCIATES**
COMMERCIAL REAL ESTATE SERVICES

TOM TORABI
Principal | Lic ID# 00936845
PH: 310.965.1754
E: ttorabi@leelalb.com

LEE & ASSOCIATES
Los Angeles - Long Beach, Inc.
1411 West 190th Street, Suite 450
Gardena, CA 90248

FLOOR PLAN | SUITE 300 (NOT DRAWN TO SCALE)



FOR MORE INFORMATION, PLEASE CONTACT:

LEE & ASSOCIATES
COMMERCIAL REAL ESTATE SERVICES

TOM TORABI
Principal | Lic ID# 00936845
PH: 310.965.1754
E: ttorabi@leelalb.com

LEE & ASSOCIATES
Los Angeles - Long Beach, Inc.
1411 West 190th Street, Suite 450
Gardena, CA 90248