

For Sale

Industrial

\$895,000



1311 Bernheim Lane

1311 Bernheim Lane,
Louisville, KY 40210

Property Highlights

- Multiple configuration options with space for private offices and a conference room.
- Equipped with a dock, three drive-in doors, and 400-amp three-phase power (buyer to verify).

Property Description

Incredible opportunity to own a fully fenced, two-building industrial property. The main building offers a flexible office layout with potential for private offices and a conference room, along with a dock and two drive-in doors. The property includes 400-amp, three-phase power (buyer to verify) and a sprinkler system. The second building features approximately 600 SF of office space and an additional drive-in door. Sandblaster and paint booth to remain.

OFFERING SUMMARY

Property Type	Industrial
Building Size	21,599
Year Built	1953

For More Information

Matt Gatewood

502.583.4040
mgatewood@naifortis.com

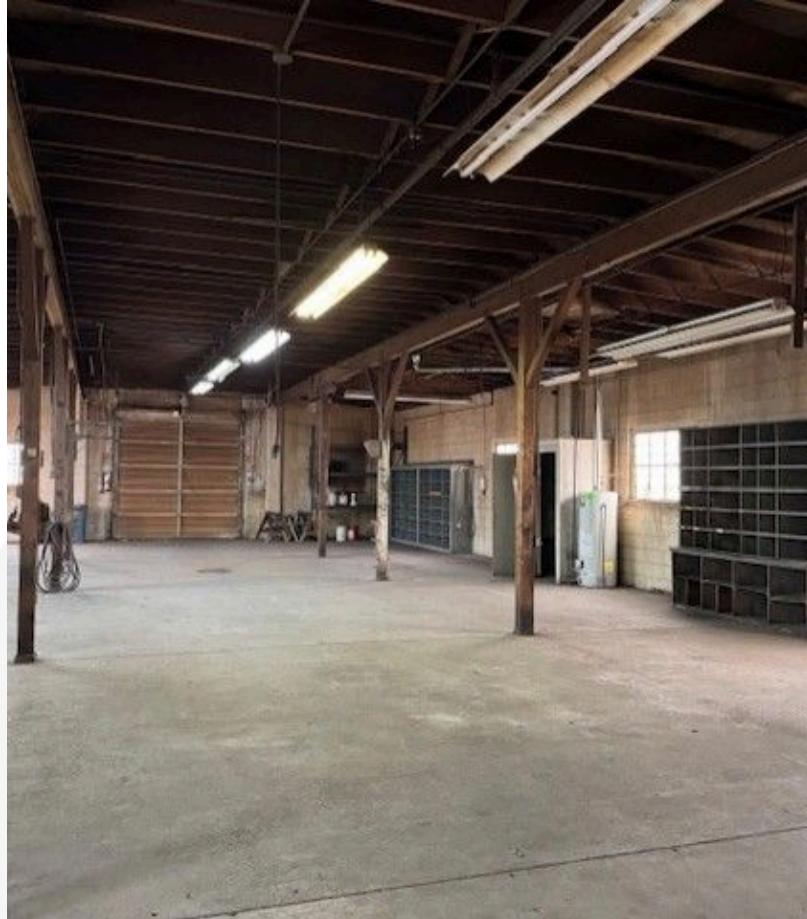
Mark Wardlaw, CCIM,

502.583.4040
mwardlaw@naifortis.co

INSTANT ACCESS: PHOTOS,
VIDEOS & DOCS



\$895,000



462 South 4th Street
Louisville, Kentucky 40202
502 583 4040 tel
naifortis.com