

**555 4TH STREET**

**SAN FRANCISCO CA 94107**

**87 PARKING SPACES + ONE RESIDENTIAL CONDO FOR SALE**



**DAVIS NGUYEN** Davis@theDNgroupSF.com | 415.412.5703 | DRE 01509978  
**MARCUS LEE** MarcusL@Compass.com | 415.999.2022 | DRE 01354869

**COMPASS**  
**COMMERCIAL**



# PROPERTY DESCRIPTION

## 555 4TH STREET

San Francisco, CA 94107

Located in the South of Market (SoMa) District, this property offers a combination of income-generating features. It includes 87 parking stalls, with 72 currently leased, a one-bedroom, one-bath residential condo, and five storage spaces.

The location is central to major tech companies, restaurants, and public transportation, making it a convenient spot for residents and tenants alike. This property presents a solid opportunity for investors looking for a mixed-use asset in one of San Francisco's most active neighborhoods.

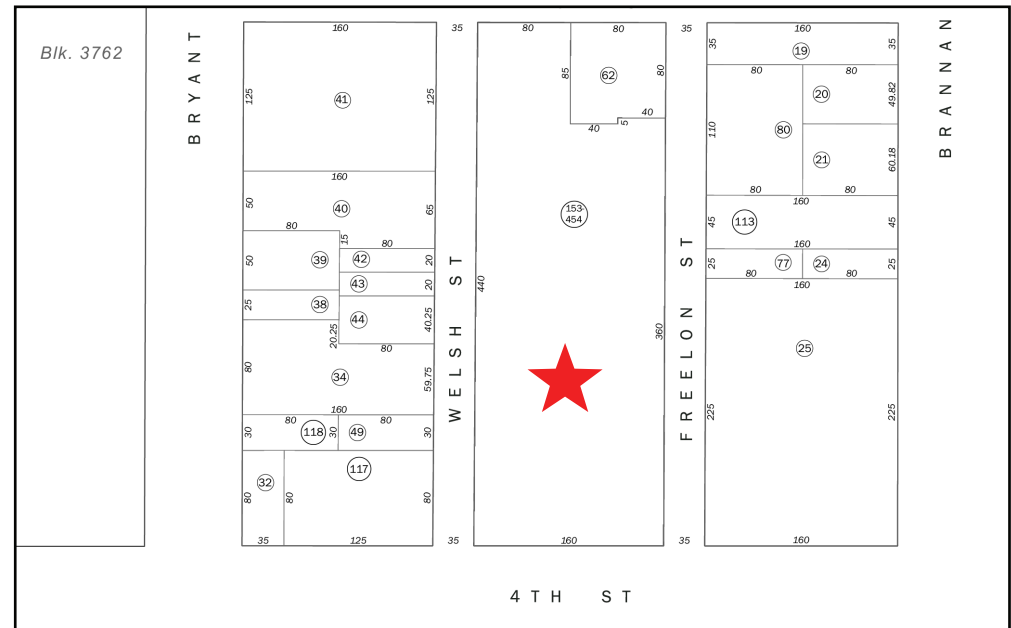


### Parking Garage

- 87 Parking Stalls
- 5 Storage Spaces
- 300 Residential Units Above
- South Beach District
- Close to Oracle Park & Freeways

### Residential Condominium, Unit #303

- ± 953 Square Feet
- 1 Bedroom / 1 Bathroom
- Includes One Parking Space



# RENT ROLL

	TYPE	CURRENT	PROFORMA
1	Parking	\$300	\$300
2	Parking	\$300	\$300
3	Parking	\$300	\$300
4	Parking	\$300	\$300
5	Parking	\$300	\$300
6	Parking	\$300	\$300
7	Parking	\$300	\$300
8	Parking	\$300	\$300
9	Parking	\$300	\$300
10	Parking	\$300	\$300
11	Parking	\$300	\$300
12	Parking	\$300	\$300
13	Parking	\$300	\$300
14	Parking	\$300	\$300
15	Parking	\$300	\$300
16	Parking	\$300	\$300
17	Parking	\$300	\$300
18	Parking	\$300	\$300
19	Parking	\$300	\$300
20	Parking	\$300	\$300
21	Parking	\$300	\$300
22	Parking	\$300	\$300
23	Parking	\$300	\$300
24	Parking	\$300	\$300
25	Parking	\$300	\$300

	TYPE	CURRENT	PROFORMA
26	Parking	\$300	\$300
27	Parking	\$300	\$300
28	Parking	\$300	\$300
29	Parking	\$300	\$300
30	Parking	\$300	\$300
31	Parking	\$300	\$300
32	Parking	\$300	\$300
33	Parking	\$300	\$300
34	Parking	\$300	\$300
35	Parking	\$300	\$300
36	Parking	\$300	\$300
37	Parking	\$300	\$300
38	Parking	\$300	\$300
39	Parking	\$300	\$300
40	Parking	\$300	\$300
41	Parking	\$300	\$300
42	Parking	\$300	\$300
43	Parking	\$300	\$300
44	Parking	\$300	\$300
45	Parking	\$300	\$300
46	Parking	\$300	\$300
47	Parking	\$300	\$300
48	Parking	\$300	\$300
49	Parking	\$300	\$300
50	Parking	\$300	\$300

	TYPE	CURRENT	PROFORMA
51	Parking	\$300	\$300
52	Parking	\$300	\$300
53	Parking	\$300	\$300
54	Parking	\$300	\$300
55	Parking	\$300	\$300
56	Parking	\$300	\$300
57	Parking	\$300	\$300
58	Parking	\$300	\$300
59	Parking	\$300	\$300
60	Parking	\$300	\$300
61	Parking	\$300	\$300
62	Parking	\$300	\$300
63	Parking	\$300	\$300
64	Parking	\$300	\$300
65	Parking	\$300	\$300
66	Parking	\$300	\$300
67	Parking	\$300	\$300
68	Parking	\$300	\$300
69	Parking	\$300	\$300
70	Parking	\$300	\$300
71	Parking	\$300	\$300
72	Parking	\$300	\$300
73	Parking	VACANT	\$300
74	Parking	VACANT	\$300
75	Parking	VACANT	\$300

	TYPE	CURRENT	PROFORMA
76	Parking	VACANT	\$300
77	Parking	VACANT	\$300
78	Parking	VACANT	\$300
79	Parking	VACANT	\$300
80	Parking	VACANT	\$300
81	Parking	VACANT	\$300
82	Parking	VACANT	\$300
83	Parking	VACANT	\$300
84	Parking	VACANT	\$300
85	Parking	VACANT	\$300
86	Parking	VACANT	\$300
87	Parking	VACANT	\$300
1	Storage	\$400	\$400
2	Storage	\$0	\$400
3	Storage	\$0	\$100
4	Storage	\$0	\$100
5	Storage	\$0	\$100
303	Residential	\$3,500	\$3,500
MONTHLY INCOME		\$25,500	\$30,700
ANNUAL INCOME		\$306,000	\$368,400

# FINANCIAL OVERVIEW

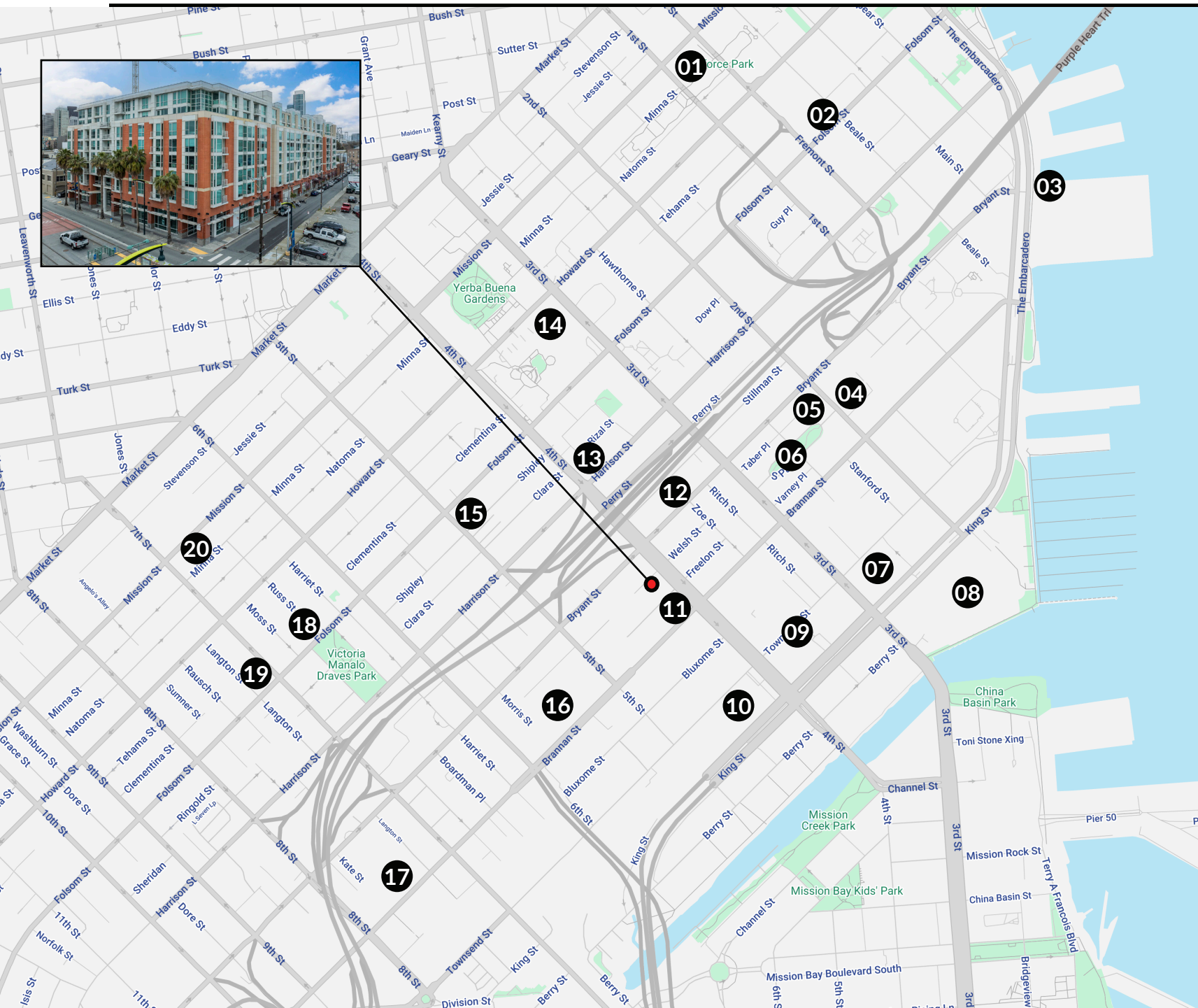
ESTIMATED EXPENSES		
	CURRENT	MARKET
Property Taxes (est. @ 1.1801%)	-	\$37,763
Parking HOA Fees	\$21,120	\$20,880
Residence HOA Fees	\$9,840	\$9,840
Residence Insurance	\$800	\$1,000
Property Tax on Parking Spaces	\$48,400	-
Property Tax on Condo	\$9,250	-
<b>Total</b>	<b>\$89,410</b>	<b>\$69,483</b>

ANNUALIZED OPERATING DATA		
	CURRENT	MARKET
Scheduled Gross Income	\$306,000	\$368,400
Less Vacancy Rate (5.0%)	(\$0)	(\$18,420)
Gross Operating Income	\$306,000	\$349,980
Less Expenses	(\$89,410)	(\$69,483)
Net Operating Income	\$216,590	\$280,497
Cap Rate	6.77%	8.77%
GRM	10.5	8.7
<b>Sales Price</b>	<b>\$3,200,000</b>	





# LOCATION MAP



## LOCATION MAP

- 1) Salesforce Tower
- 2) Philz Coffee
- 3) Red's Java House
- 4) 21st Amendment Brewery
- 5) Blue Bottle Coffee
- 6) South Park
- 7) Hyatt Place San Francisco
- 8) Oracle Park
- 9) Omni Hotel
- 10) Caltrain Station
- 11) Marlowe
- 12) Black Hammer Brewing
- 13) Whole Foods
- 14) Moscone Center
- 15) Mathilde French Bistro
- 16) San Francisco Flower Market
- 17) REI
- 18) Deli Board
- 19) Sightglass Coffee
- 20) Square Pie Guys



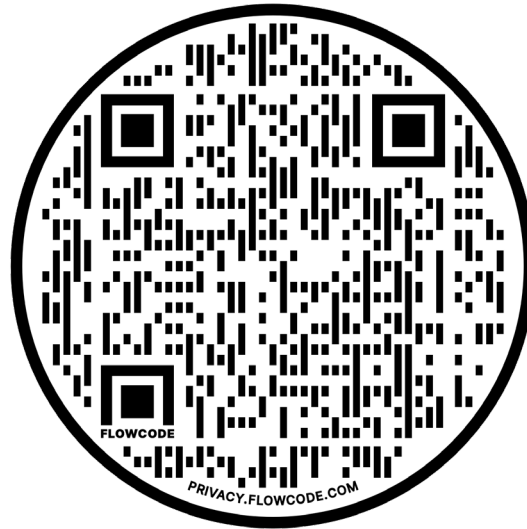


# PHOTOS

---



# COMPASS COMMERCIAL



Scan the QR code for more information about  
555 4th Street

## DAVIS NGUYEN

Davis@theDNgroupSF.com

415.412.5703

DRE 01509978

## MARCUS LEE

MarcusL@Compass.com

415.999.2022

DRE 01354869

## CONFIDENTIALITY & DISCLOSURE

Compass is a real estate broker licensed by the State of California and abides by Equal Housing Opportunity laws. License Number 01991628, 01527235, 1527365. All material presented herein is intended for informational purposes only and is compiled from sources deemed reliable but has not been verified. Changes in price, condition, sale or withdrawal may be made without notice. No statement is made as to the accuracy of any description. All measurements and square footage are approximate.