



# 102 Davis Street

Belmont, NC, 28012



## Available for Sale

+/- 1,540 SF Restaurant/Hospitality Building in Belmont, NC

## Property Overview

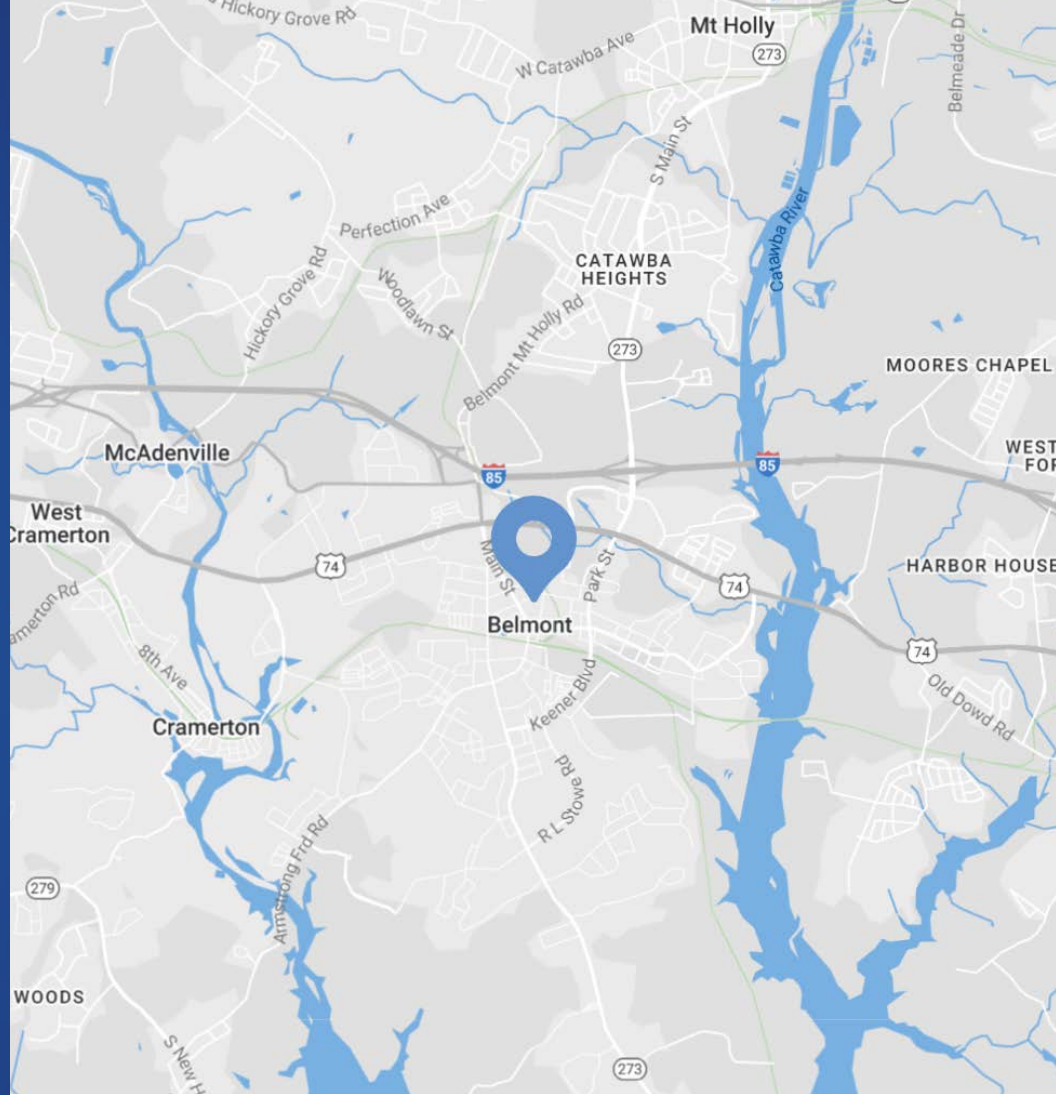
# 102 Davis Street Available for Sale

A rare turnkey restaurant and hospitality setting in the heart of Historic Belmont. The property has undergone substantial improvements including the quaint interior as well as the expansive outdoor area, perfect for high-volume gatherings and flexible programming.

The site features two outdoor bars, a large covered seating area, open-air dining zones, a fireplace, string-lighting, and multiple service points. There is ample room for food trucks, pop-ups, private events, and live music. The seating capacity totals 180 seats with inside and outside accommodations. The layout supports everything from casual day service to full-scale day and weekend events.

## Property Details

<b>Address</b>	102 Davis St   Belmont, NC 28012
<b>Availability</b>	+/- 1,540 SF Available for Sale
<b>Use</b>	Restaurant/Hospitality
<b>Zoning</b>	NC-C
<b>Seating Capacity</b>	Inside Capacity: 50 Outside Capacity: 130
<b>Traffic Counts</b>	Wilkinson Blvd   24,000 VPD I-85   140,000 VPD
<b>Additional Notes</b>	FFE can be included in the sale, including food truck
<b>Sale Price</b>	\$1,350,000



## Demographics

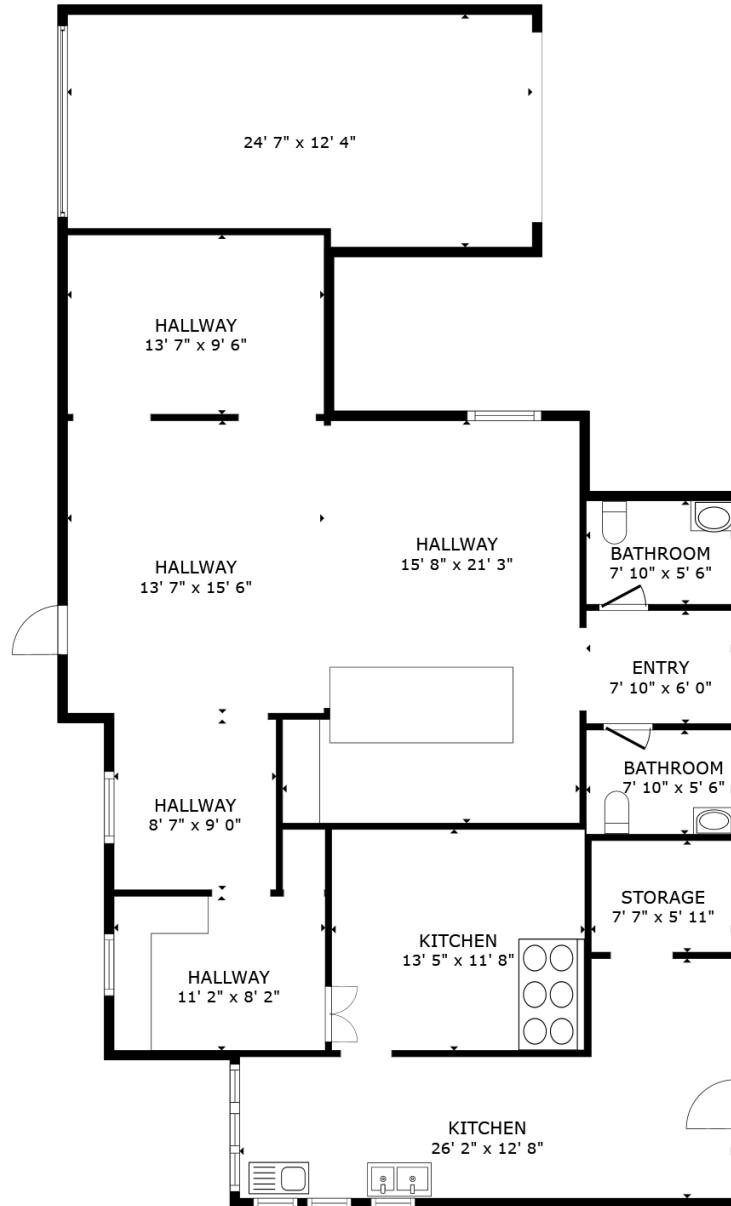
RADIUS	1 MILE	3 MILE	5 MILE
<b>2025 Population</b>	6,649	35,927	82,835
<b>Avg. Household Income</b>	\$115,695	\$114,617	\$113,981
<b>Median Household Income</b>	\$78,382	\$86,868	\$85,323
<b>Households</b>	2,968	15,620	33,953
<b>Daytime Employees</b>	5,236	12,010	27,691



Available

+/- 1,540 SF

 Virtual Tour



# Property Photos







# Belmont

Historic Roots with Connected Living

Belmont is a city in Gaston County, North Carolina, located approximately 12 miles west of Charlotte along the Catawba River. Incorporated in 1895, the city is governed by a council-manager system and focuses on providing reliable municipal services for residents and businesses. Its close proximity to Charlotte's employment centers and Charlotte Douglas International Airport makes Belmont an attractive location, supporting a growing economy with a strong base of thriving local businesses, particularly in its historic downtown.

An aerial photograph of downtown Belmont, North Carolina, showing a grid of streets and multi-story brick buildings. A blue semi-transparent overlay is placed over the bottom portion of the image, containing four data points with icons and text.

 **0.3 Mi**  
Distance to  
Downtown Belmont

 **12,010**  
Daytime Population  
(3 Mile)

 **68**  
Walkability  
Score

 **24,000**  
Vehicles per Day  
on Wilkinson Blvd



Contact for Details

## Rusty Gibbs

(704) 373-9797

rusty@thenicholscompany.com



### Website

[www.TheNicholsCompany.com](http://www.TheNicholsCompany.com)

### Phone

Office (704) 373-9797

Fax (704) 373-9798

### Address

1204 Central Avenue, Suite 201  
Charlotte, NC 28204

This information has been obtained from sources believed to be reliable. While we do not doubt its accuracy, we have not verified it and make no guarantee, warranty or representation to independently confirm its accuracy and completeness.