

**32,452 SF
AVAILABLE**



7950 W 185TH STREET
TINLEY PARK, ILLINOIS

Terry M. Grapenthin
Principal
tgrape@lee-associates.com
D 773.355.3042

Michael O'Leary
Principal
moleary@lee-associates.com
D 773.355.3024

Ryan J. Earley
Principal
rearley@lee-associates.com
D 773.355.3020



All information furnished regarding property for sale, rental or financing is from sources deemed reliable, but no warranty or representation is made to the accuracy thereof and same is submitted to errors, omissions, change of price, rental or other conditions prior to sale, lease or financing or withdrawal without notice. No liability of any kind is to be imposed on the broker herein.

TINLEY PARK, IL 60477



BUILDING SPECIFICATIONS:

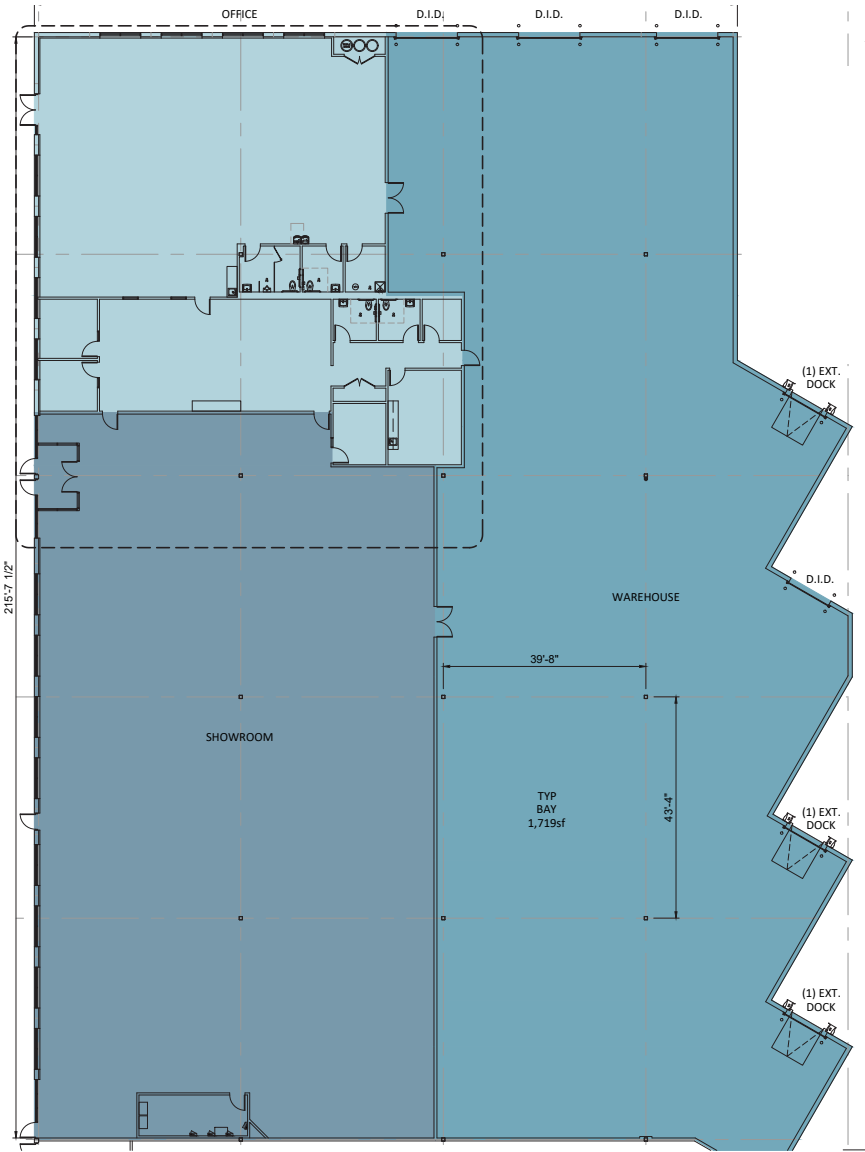
BUILDING SIZE:	79,107 SF
AVAILABLE:	32,452 SF (divisible)
OFFICE/ SHOWROOM:	12,000 SF (easily reduced)
CLEAR HEIGHT:	24'
LOADING:	<ul style="list-style-type: none">› 3 exterior dock doors› 1 ramp to a dock door› 3 drive-in doors
SPRINKLER:	ESFR
PARKING:	159 auto (building total)
POWER:	200 amp, 277/480 volt, 3-phase, 4-wire
LEASE PRICE:	Subject to Offer
RE TAXES:	\$1.58 PSF
CAM:	\$2.05 PSF
COMMENTS:	<ul style="list-style-type: none">› Visibility from I-80› Low Will County Taxes› Easily accessible to I-80 via full interchange at Harlem Ave



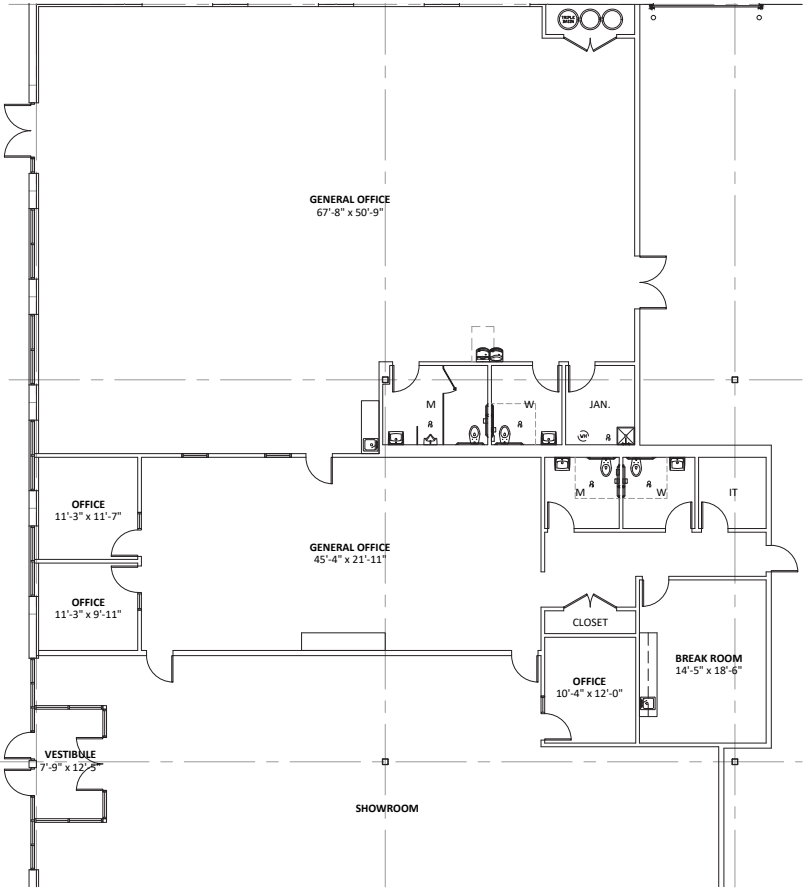
185TH STREET

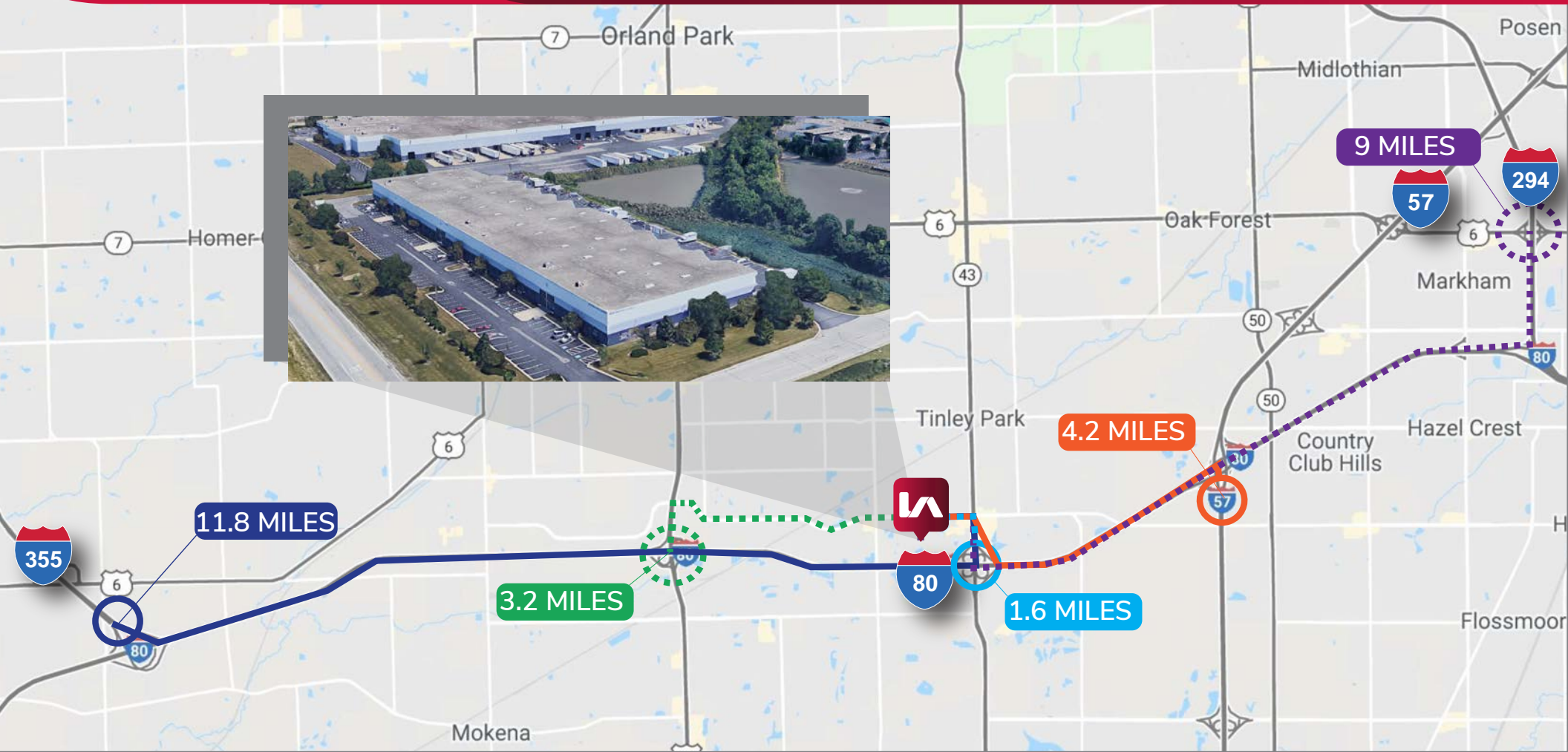
AVAILABLE FOR LEASE
7950 W 185TH STREET
TINLEY PARK, IL 60477

FLOOR PLAN



OFFICE FLOOR PLAN





Terry M. Grapenthin
Principal
tgrape@lee-associates.com
D 773.355.3042

Michael O'Leary
Principal
moleary@lee-associates.com
D 773.355.3024

Ryan J. Earley
Principal
rearley@lee-associates.com
D 773.355.3020



All information furnished regarding property for sale, rental or financing is from sources deemed reliable, but no warranty or representation is made to the accuracy thereof and same is submitted to errors, omissions, change of price, rental or other conditions prior to sale, lease or financing or withdrawal without notice. No liability of any kind is to be imposed on the broker herein.