

240 Gibraltar Road I Suite 150  
Horsham, PA 19044

**workspace**  
property trust

**4,562 SF Available Now**

Office Space



# 240 Gibraltar Road I Suite 150

Horsham, Pennsylvania, 19044

## PROPERTY HIGHLIGHTS

### AMENITIES

240 Gibraltar Road is an Energy Star-rated, three-story, multi-tenant office building in Horsham, Pennsylvania. This Class "A" office features a fitness center with showers, a full-service on-site café with outside patio seating, on-site fitness center at 220 Gibraltar Rd. With its proximate location to the Pennsylvania's Turnpike, routes 611, 63 and 309 providing access to New York, Princeton, Trenton and Philadelphia, 240 Gibraltar is a must-visit for business professionals welcoming clients across the tri-state.

Tenants enjoy the proximity to countless lifestyle centers, the walkability to restaurants, and numerous on-site amenities throughout our campus such as:

- On-site Beer Garden at 100 Lakeside
- On-site EV charging stations throughout campus
- On-site Fitness Center at 100 Lakeside
- Synergy at 100 Lakeside Conference Center
- Fully equipped conference facility at 200 Gibraltar
- Access to (5) daycares minutes from the office
- 555 Flats Luxury Living under 1 mile away
- Shopping at the Upper Dublin Promenade under 2 miles away

**Building Owner:** Workspace Property Trust

**Total Building Size:** 63,587

**Ceiling Height:** 8'6"

4,562 SF Available Now

Office Space



*Walkable to Duke's Cafe  
located at 220 Gibraltar Rd*



*Walkable to On-site fitness center  
located at 220 Gibraltar Rd*



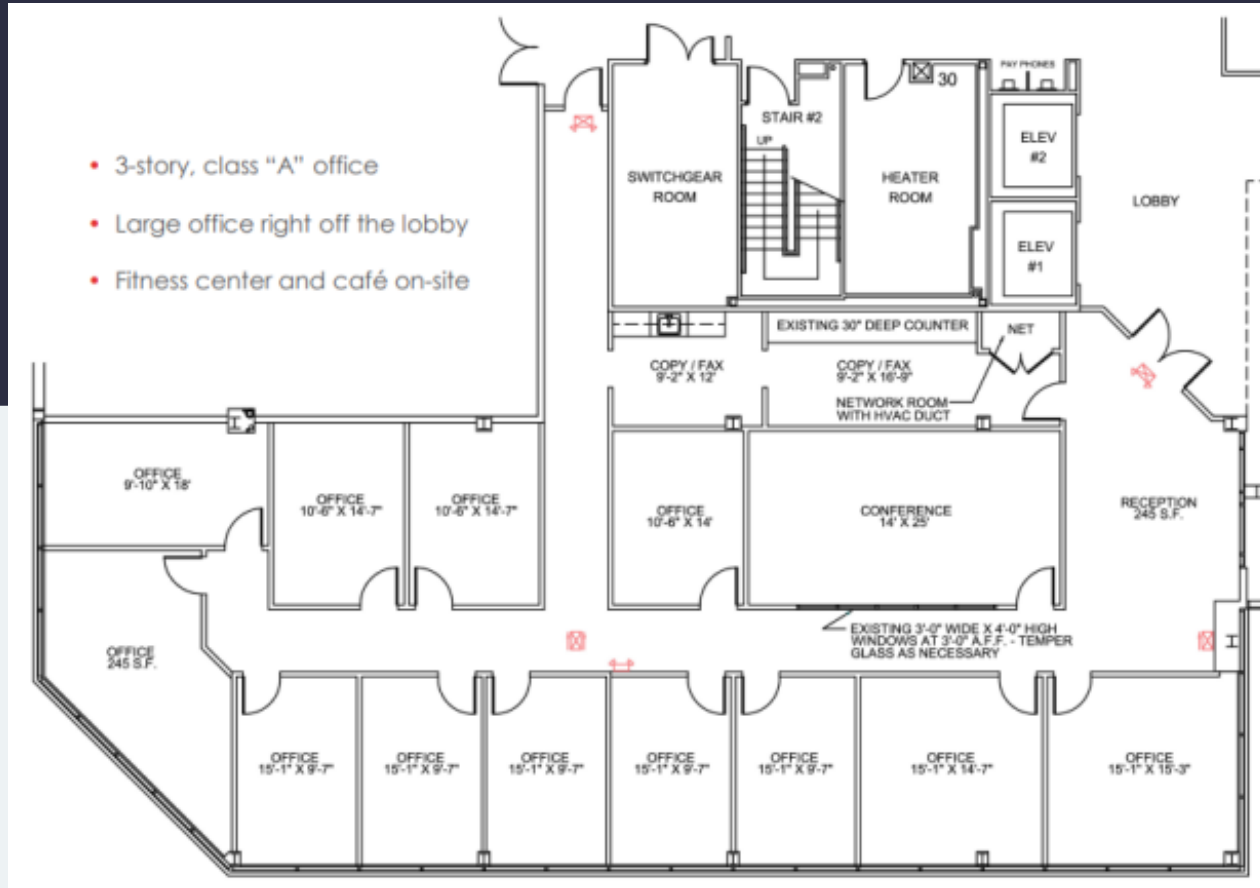
# 240 Gibraltar Road I Suite 150

Horsham, Pennsylvania 19044

**workspace**  
property trust

## 4,562 SF Available for Lease

Office Space



## Leasing Information

700 Dresher Road, Suite 150  
(215) 328-2732  
[www.workspaceproperty.com](http://www.workspaceproperty.com)

Doug Himmelreich  
Director of Leasing  
[Dhimmelreich@workspaceproperty.com](mailto:Dhimmelreich@workspaceproperty.com)



# Spaces for the Way Work Happens Today.

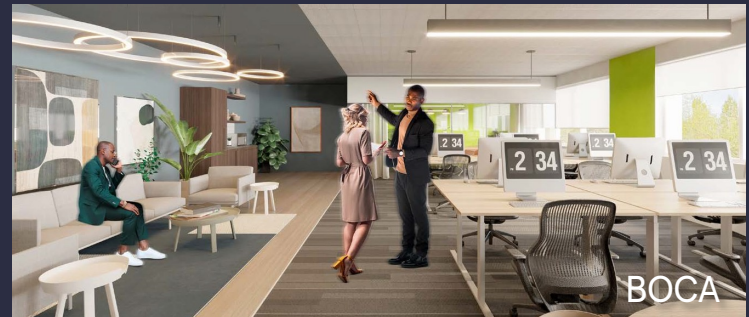
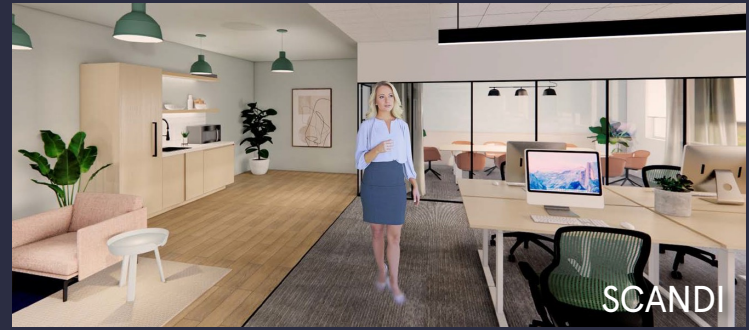
These beautifully designed themes inspire creativity and encourage productivity. Whether you are looking for 1,000 square feet or 100,000 square feet, our in-house design & development team can deliver a turnkey office solution.

## Tailored for the Evolution of Office:

- "A La Carte" or "On Demand" Furniture Packages Available
- Plug & Play IT Packages Available



**Scan here** to learn more about our premium theme selects.



\*Indicative of the look and feel (not the actual suite)