



# RAINE VENTURES

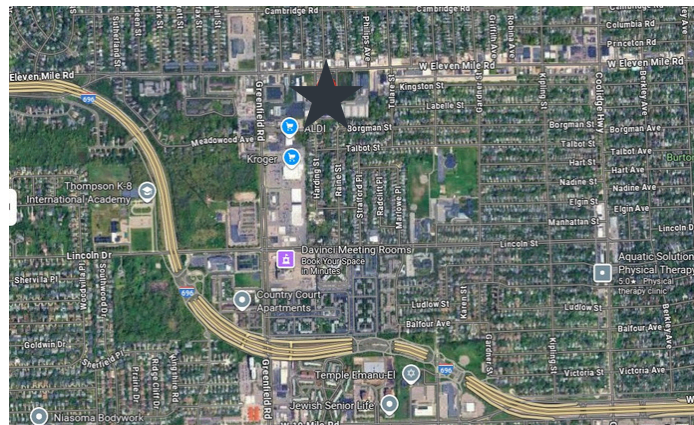
14925 W. 11 MILE ROAD  
OAK PARK, MI 48237

**TYPE** ENGINEERING PROTOTYPE

**SIZE** 36,300 SQUARE FEET  
WAREHOUSE- 21,300  
OFFICE- 15,000

## PROPERTY HIGHLIGHTS

- 2 TRUCKWELLS
- AMPLE PARKING SPACES
- 11 MILE ROAD FRONTAGE WITH HIGH VISIBILITY
- HIGH END FURNITURE AVAILABLE FOR TURN KEY SPACE
- RECENTLY RENOVATED
- ONE-TWO TON CRANE
- PROFESSIONALLY MANAGED
- WELL MAINTAINED
- LIGHT INDUSTRIAL ZONING



### CENTRALLY LOCATED

8 MILE ROAD- 8 MINUTES  
696- 4 MINUTES  
M10- THE LODGE-8 MINUTES  
M39-Southfield-7 MINUTES  
I-75- 11 MINUTES

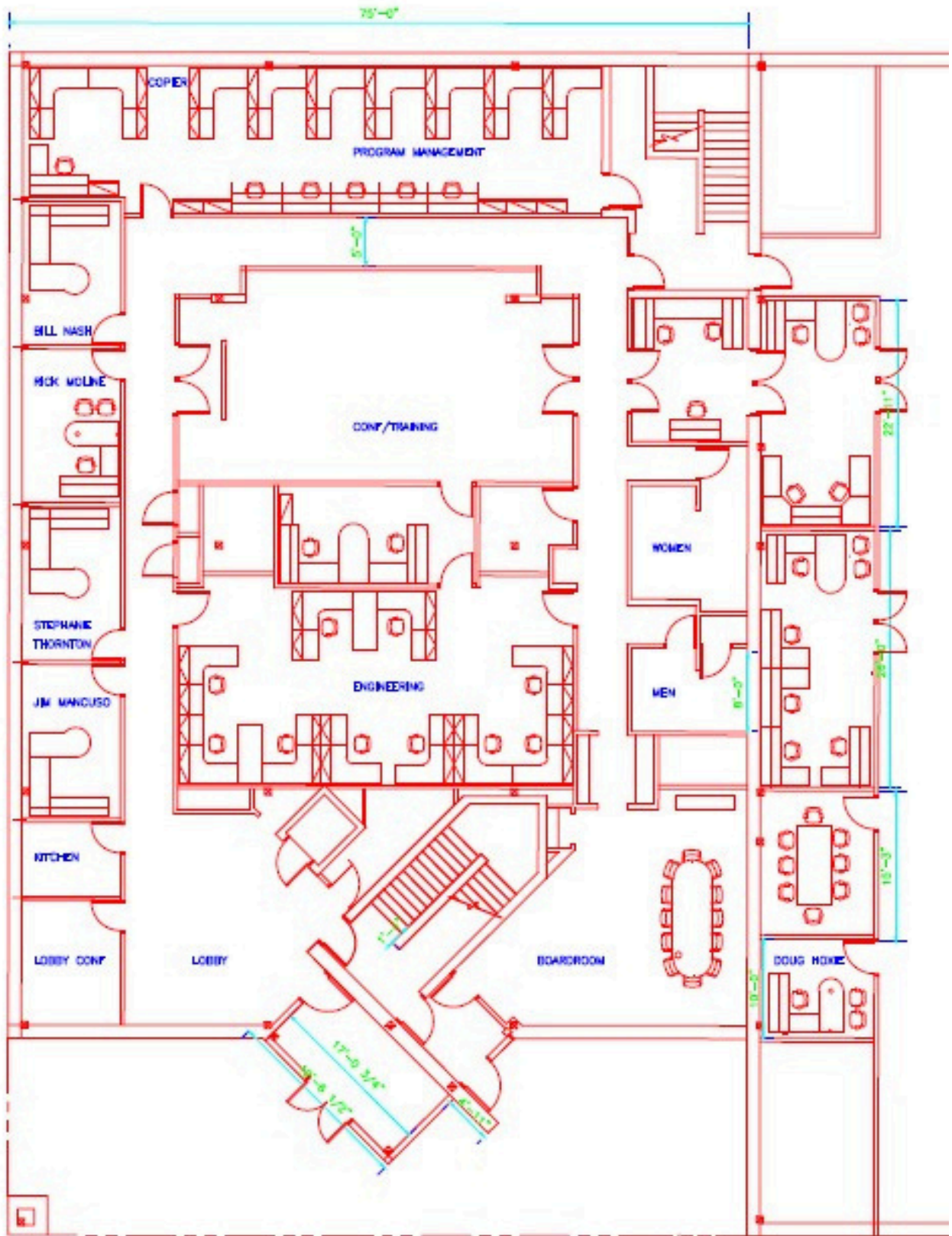
## **BROKER PROTECTED**

**CONTACT US**

BETHANY HALEY  
947-366-0927 | BHALEY@AVISPROP.COM

**Avis** property  
management

# FIRST FLOOR OFFICE LAYOUT

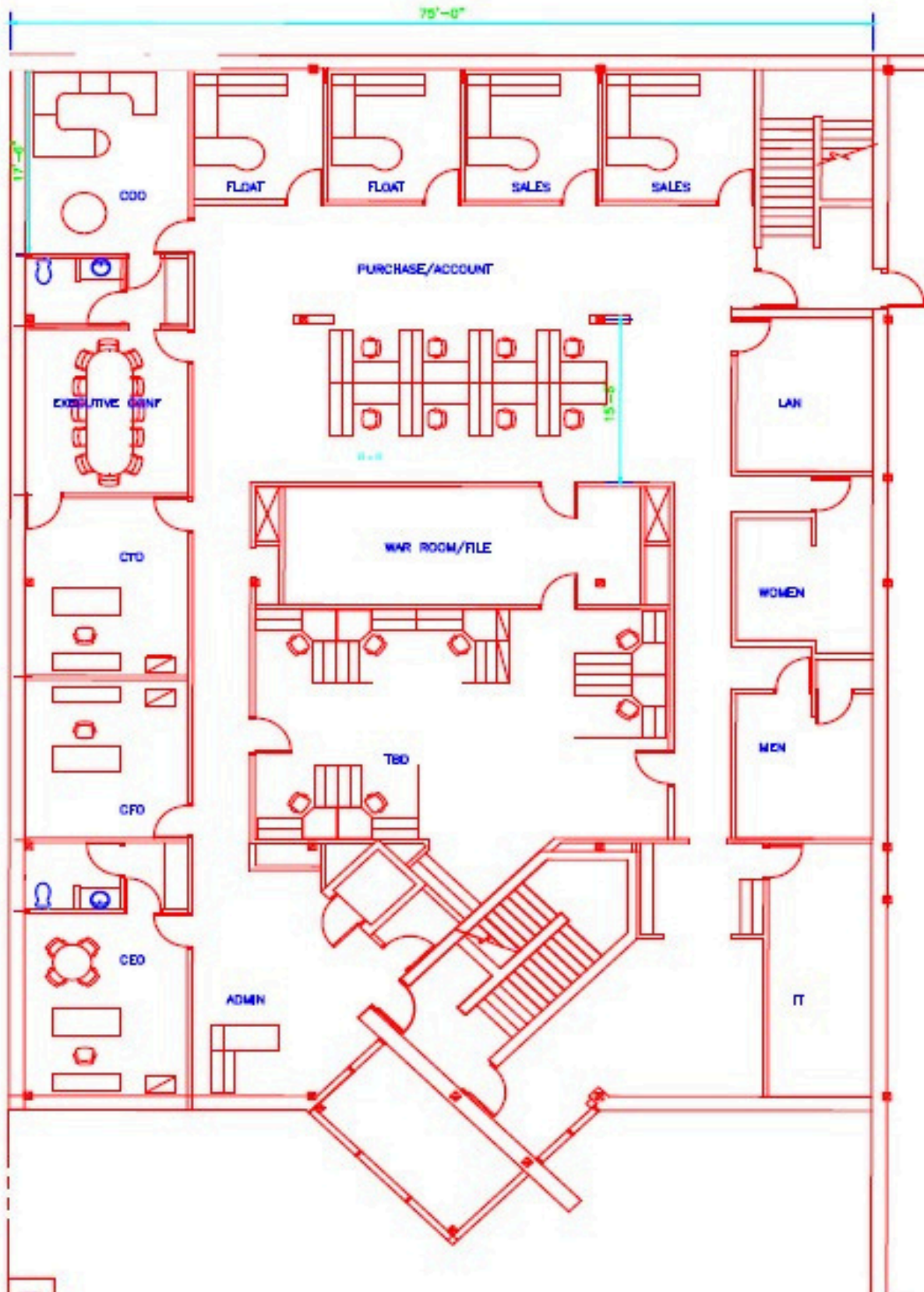


**CONTACT US**

BETHANY HALEY  
947-366-0927 | BHALEY@AVISPROP.COM

**Avis** property  
management

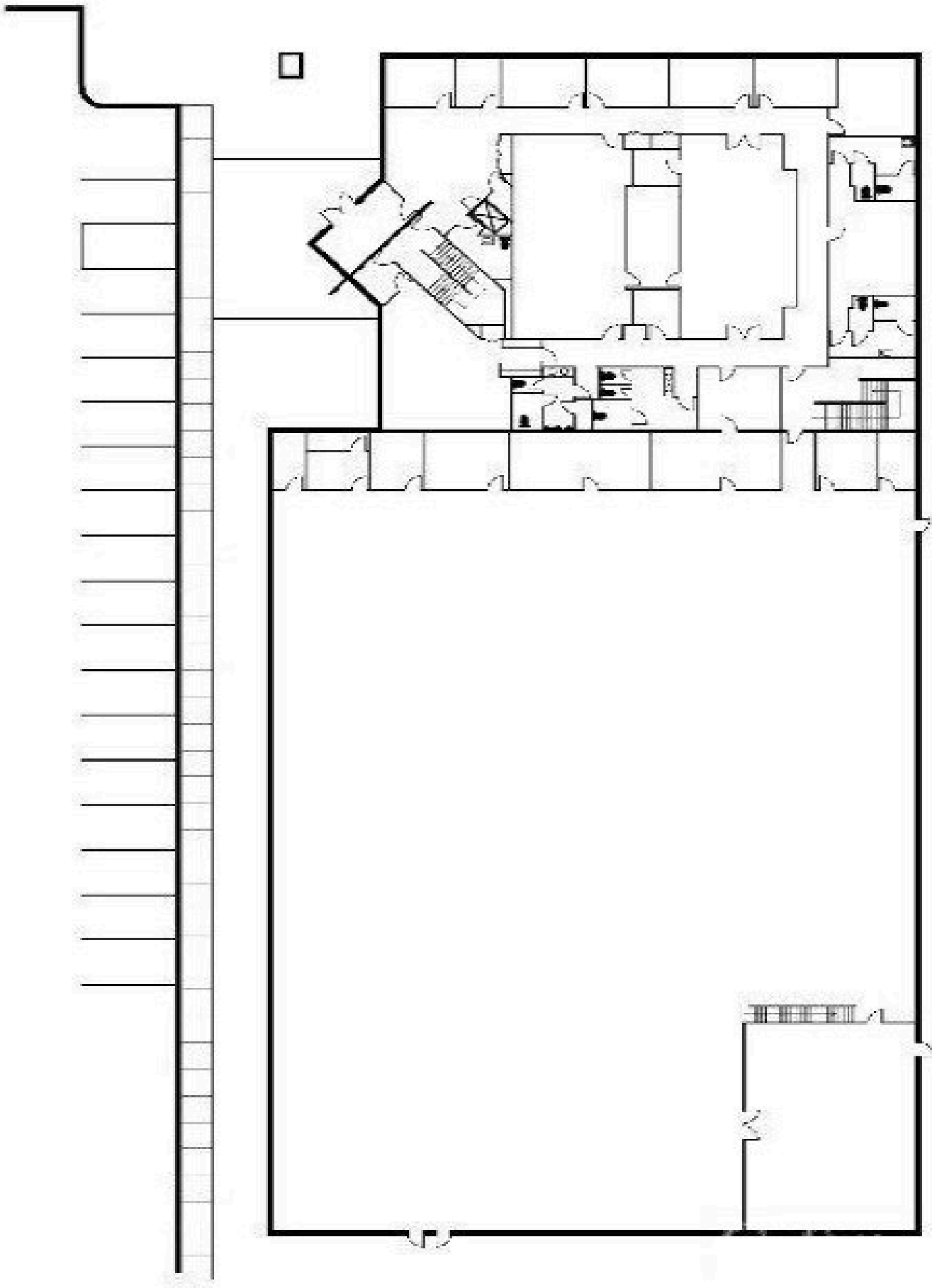
# SECOND FLOOR OFFICE LAYOUT



**CONTACT US**

BETHANY HALEY  
947-366-0927 | BHALEY@AVISPROP.COM

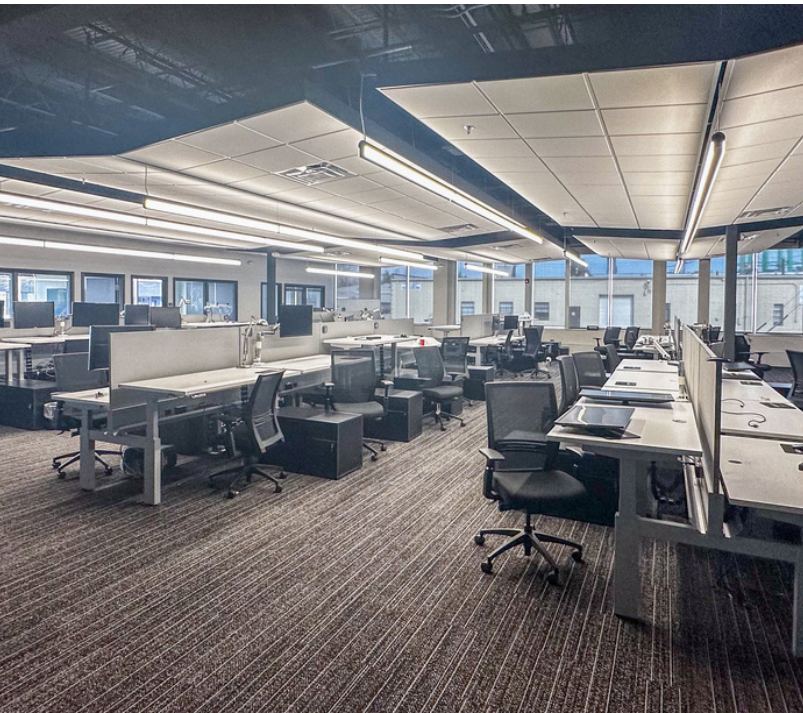
**Avis** property  
management



**CONTACT US**

BETHANY HALEY  
947-366-0927 | BHALEY@AVISPROP.COM

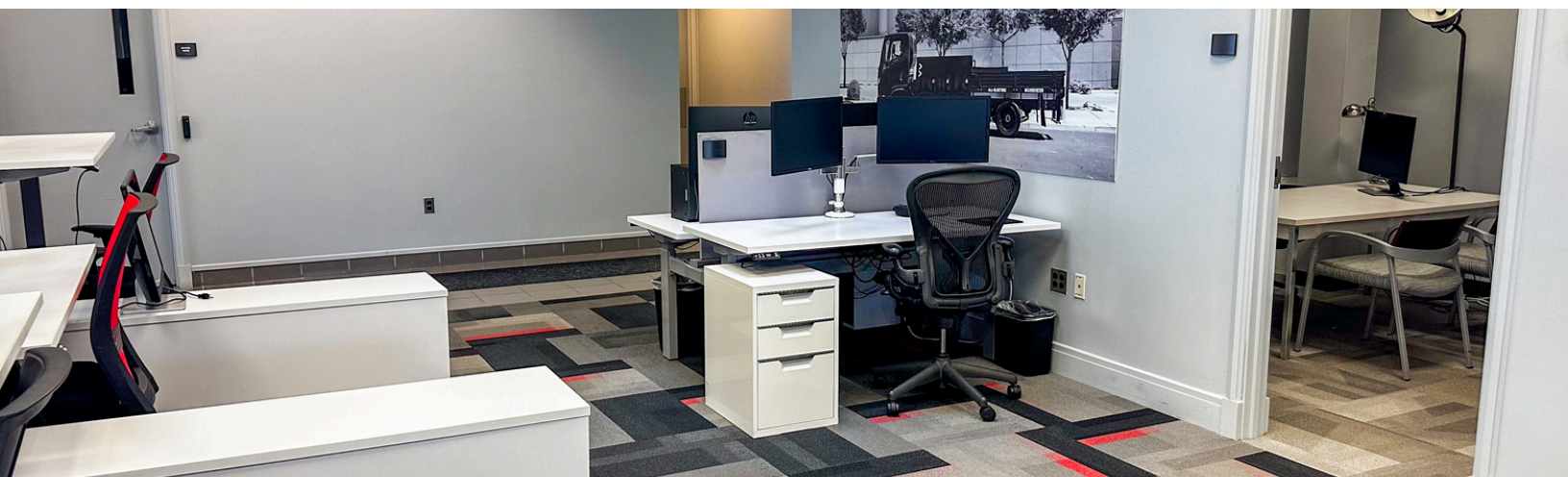
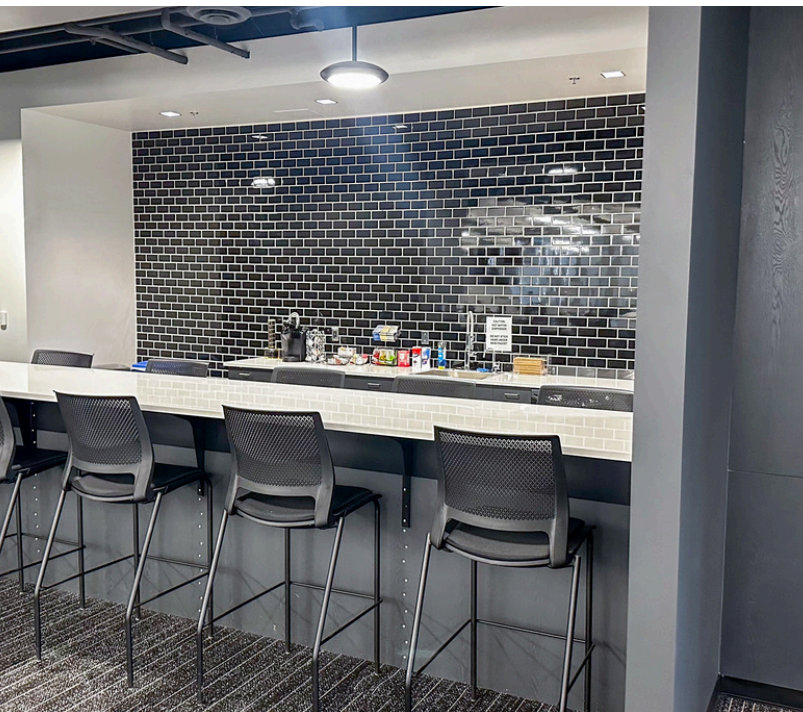
**Avis** property  
management



**CONTACT US**

BETHANY HALEY  
947-366-0927 | BHALEY@AVISPROP.COM

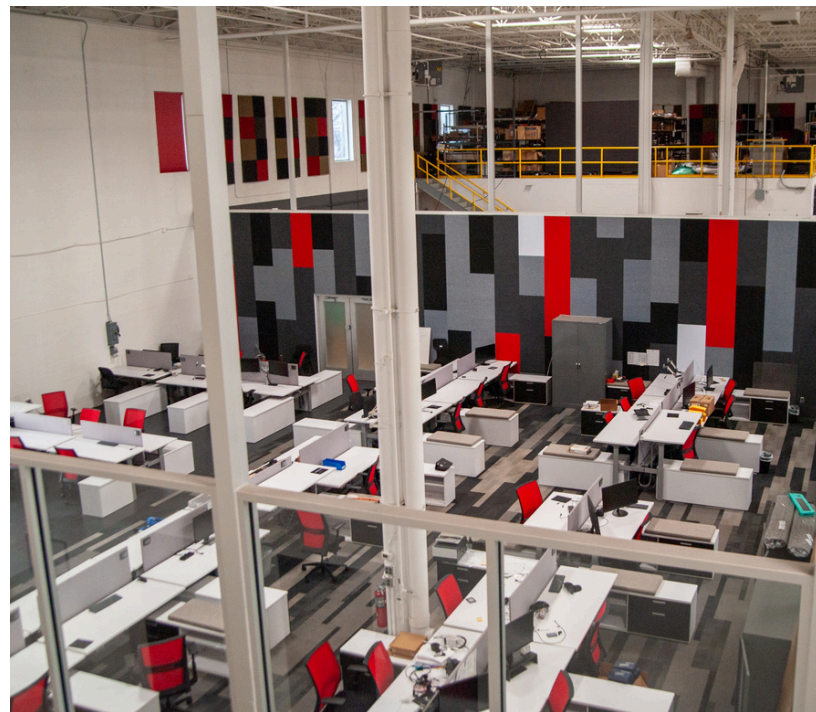
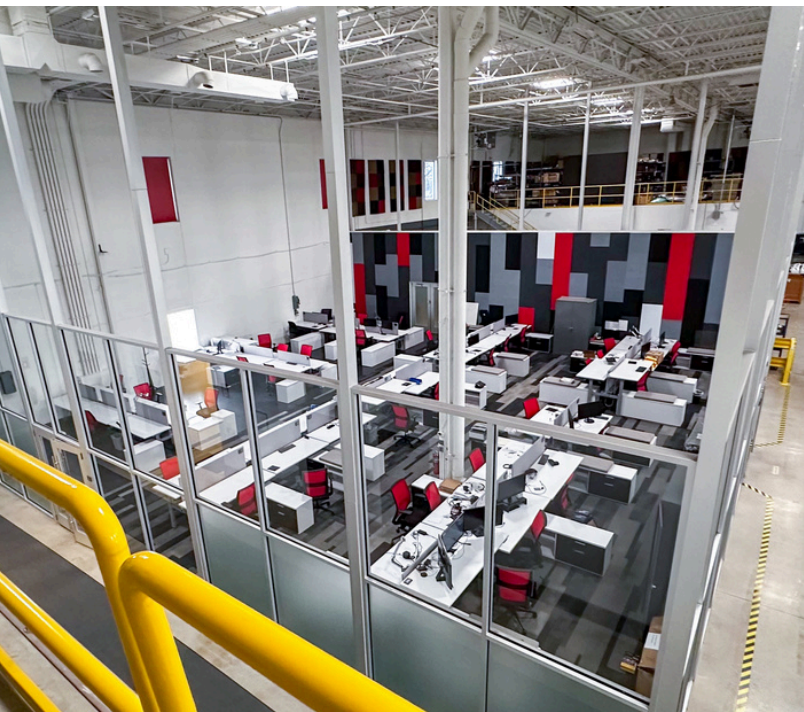




**CONTACT US**

BETHANY HALEY  
947-366-0927 | BHALEY@AVISPROP.COM

**Avis** property  
management



**CONTACT US**

BETHANY HALEY  
947-366-0927 | BHALEY@AVISPROP.COM

**Avis** property  
management

# RAINE VENTURES

14925 W. 11 MILE ROAD  
OAK PARK, MI 48237

**TYPE** ENGINEERING PROTOTYPE

**SIZE** 136,300 SQUARE FEET  
WAREHOUSE- 21,300  
OFFICE- 15,000

## PROPERTY OVERVIEW

County: Oakland  
Zoning: Light Industrial

Lease Rate: TBD NNN  
Estimated NNN: \$2.50psf

## BUILDING SPECIFICS

<b>Year Built:</b>	1996	<b>Parking:</b>	85 Spaces
<b>Total Available:</b>	36,300 SF	<b>HVAC:</b>	100% AC
<b>Available Shop:</b>	21,300 SF	<b>Power:</b>	2,000a/480v w/ transformer
<b>Available Office:</b>	15,000 SF	<b>Lighting:</b>	Energy Efficient/LED
<b>Acreage:</b>	5 Acres	<b>Restrooms:</b>	Ample
<b>Construction:</b>	Block	<b>Security System:</b>	Yes
<b>Stories:</b>	Two	<b>Grade Level Doors:</b>	1- 12' x 14'
<b>Floors:</b>	6' Concrete	<b>Truckwells/Docks:</b>	2
<b>Max Ceiling Height:</b>	26'	<b>Cranes:</b>	1- 2 Ton
<b>Sprinklers:</b>	Yes	<b>Bay Sizes:</b>	45' x 45'

**CONTACT US**

BETHANY HALEY  
947-366-0927 | BHALEY@AVISPROP.COM

**Avis** property  
management