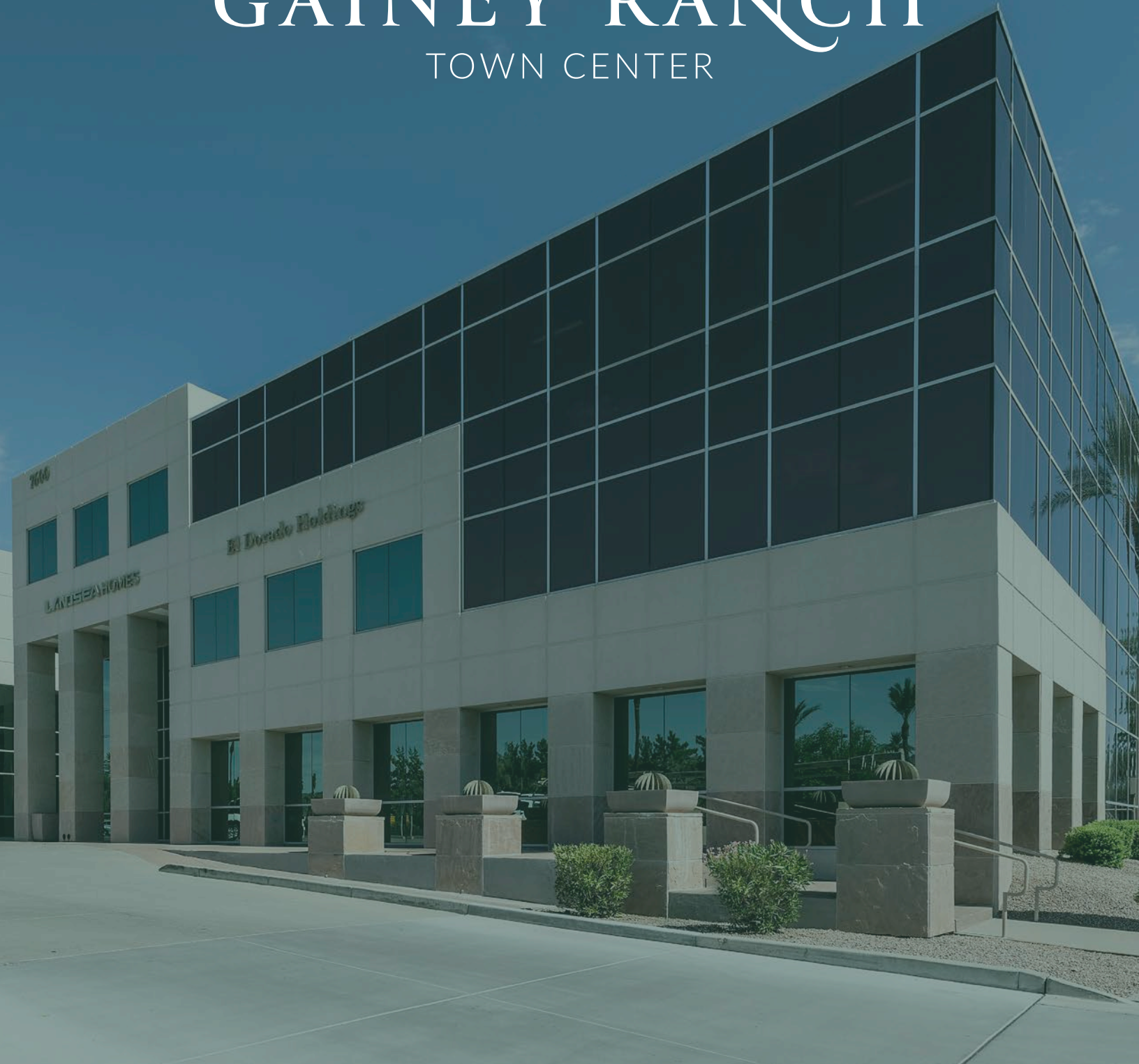




GAINNEY RANCH

TOWN CENTER



CLASS A OFFICE SPACE FOR LEASE

7600 & 7702 E. DOUBLETREE RANCH ROAD, SCOTTSDALE, ARIZONA

WHERE THE RESORT MEETS THE OFFICE

Get the lifestyle perks and the upscale workspace you want in the affluent, laid-back community of Gainey Ranch. With golf course and mountain views, flexible spaces, and a location less than 10 minutes from Old Town Scottsdale, Gainey Ranch Town Center is where you can have it all.



PROPERTY FEATURES

- 2 Class A Office Buildings Totaling ±125,364 SF
- \$34.00 PSF, Full Service
- Recently Renovated Lobbies
- 2-Level Underground Parking Garage
 - 7702 Parking Ratio - 3.3/1,000
 - 7600 Parking Ratio - 4/1,000
 - \$75.00 Reserved, \$50.00 Unreserved
- Stunning Golf Course and Mountain Views
- 30,000 SF On-Site Shopping and Dining
- Signage Opportunities
- 7702 - LEED Certified Silver 2018

OPEN, MODERN, LIGHT-FILLED
SPACES OFFER BUSINESSES A
PLACE TO THRIVE AND GROW.



AMENITIES

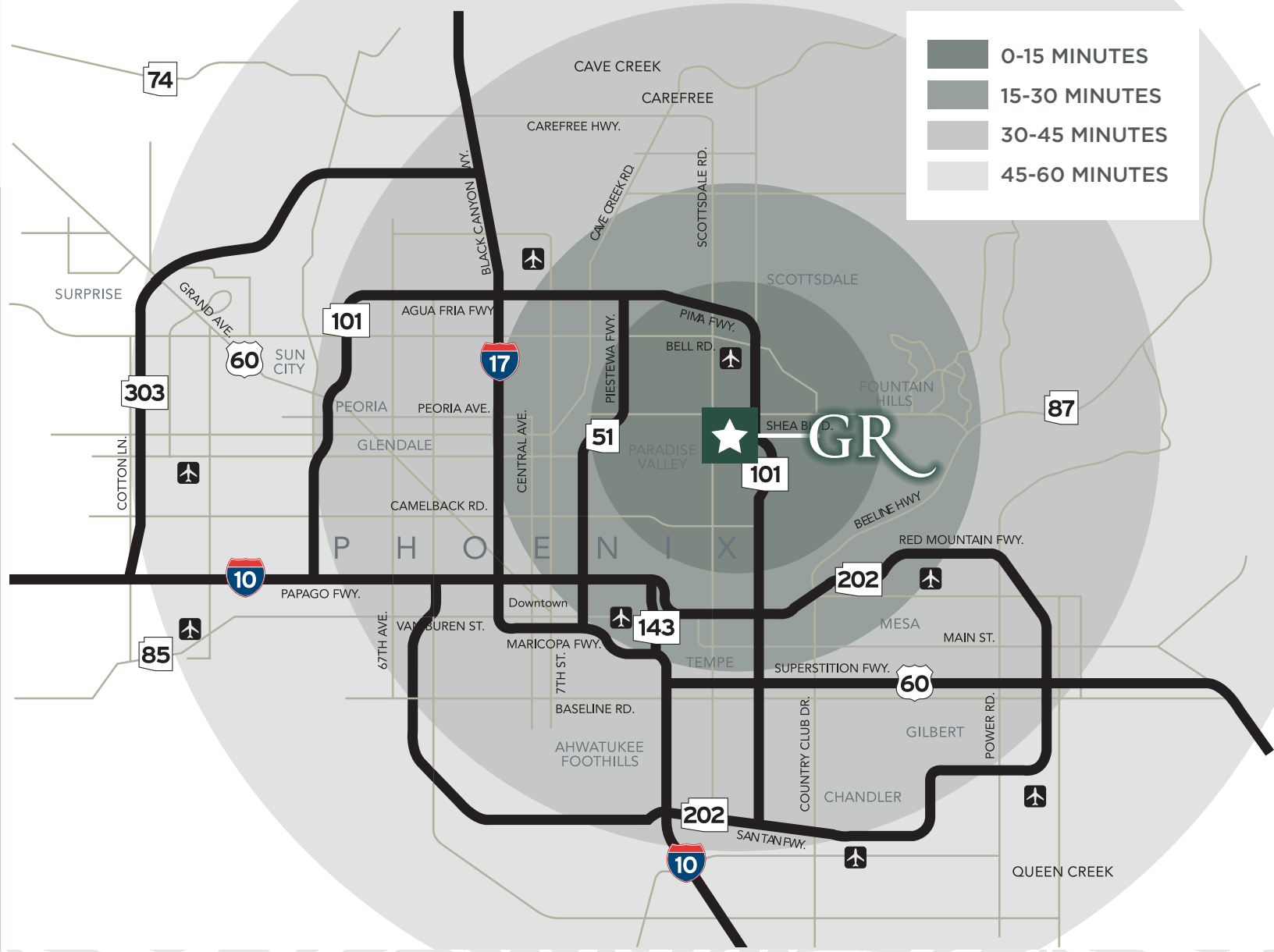
YOUR GATEWAY TO THE BEST OF SCOTTSDALE



THE SHOPS AT GAINNEY VILLAGE

GAINNEY RACH FINANCIAL CENTER

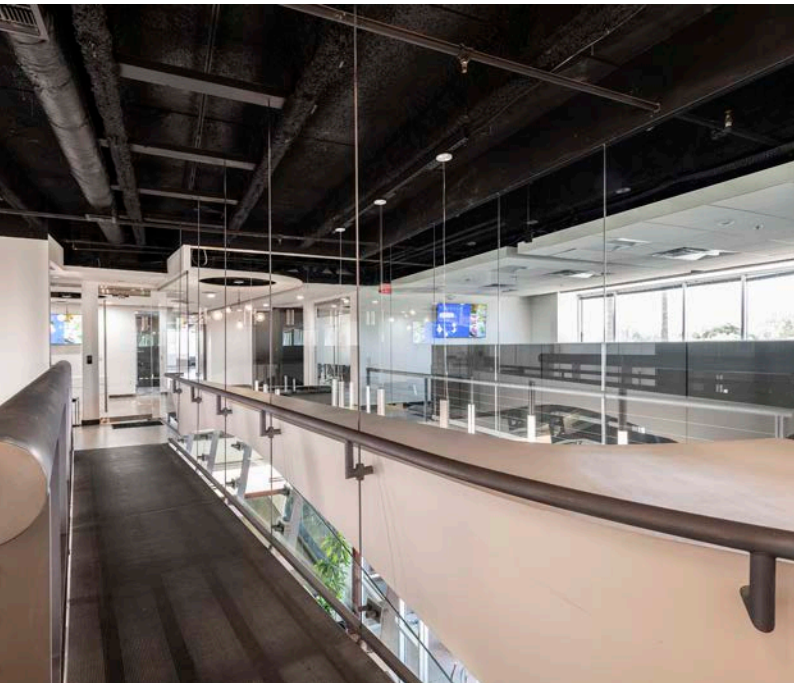
THE SHOPS AT GAINNEY RANCH

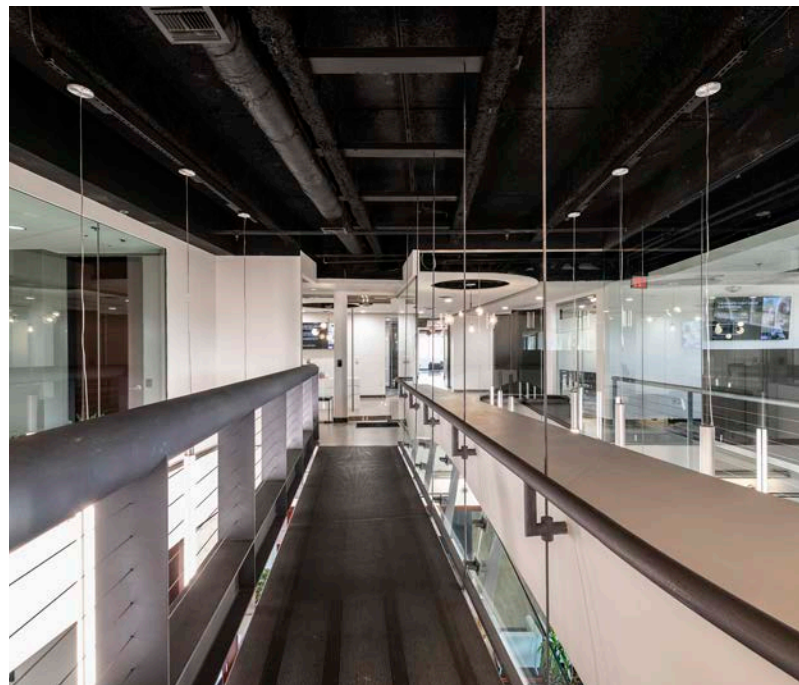
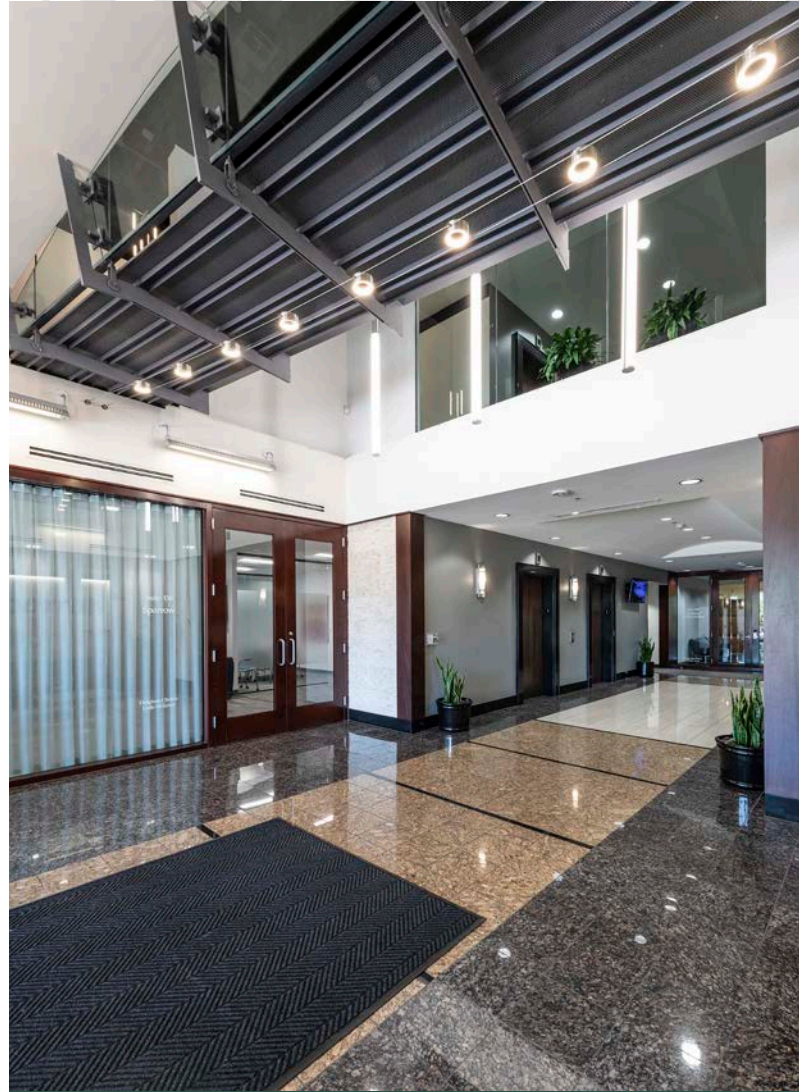
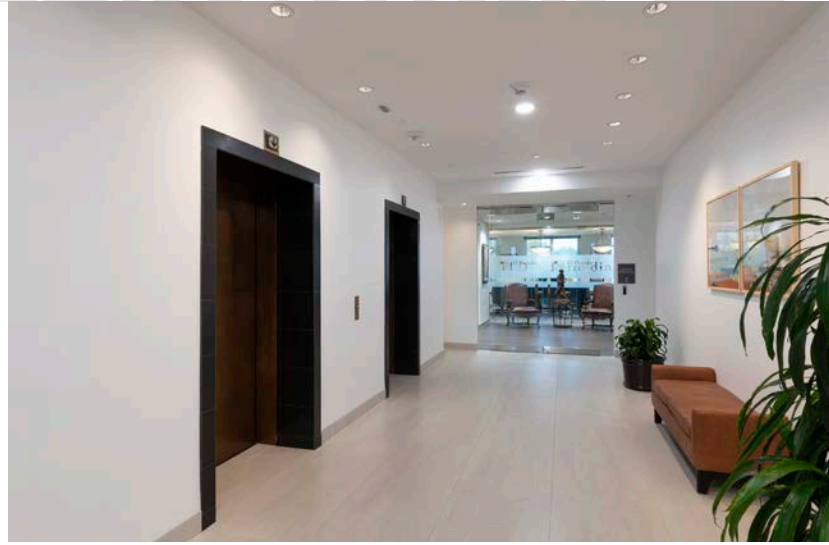


THE PERFECT MIX OF
CONVENIENCE
 AND CONNECTIVITY

7	11	17	20	21
MINUTES TO THE 101	MINUTES TO OLD TOWN	MINUTES TO 51	MINUTES TO THE 202	MINUTES TO SKY HARBOR INTL AIRPORT

INTERIORS







GAINNEY RANCH

TOWN CENTER

FOR MORE INFORMATION, PLEASE CONTACT:

SCOTT BOARDMAN
Executive Managing Director
+1 602 224 4446
scott.boardman@cushwake.com

KRISTINA CUTILLO
Director
+1 973 459 8102
kristina.cutillo@cushwake.com

