



COMMERCIAL & RESIDENTIAL
MANAGEMENT GROUP

SPACE FOR LEASE

BEAVERTON OFFICE SPACE

4915 SW GRIFFITH DR, BEAVERTON OR 97005



**CALL OR EMAIL
FOR A TOUR!**

SPACE AVAILABLE:

- SUITE 205 - 1,289 SQ FT
- SUITE 216 - 1,837 SQ FT
- SUITE 300 - 6,179 SQ FT



SCOTT WEIGEL | BROKER | SCOTTW@CRMGCO.COM | (503) 802-2538
JILL KEOPPEL | PRINCIPAL BROKER | JILLK@CRMGCO.COM | (971) 353-2079
WWW.CRMGCO.COM | 9400 SW BARNES RD, PORTLAND, OR 97225

The information in this package was gathered from sources deemed reliable, however C&R Management Group, makes no representation or warranty of the accuracy of the information. Any buyer or tenant considering purchase or lease of this property should confirm any and all information relied upon in making the decision to purchase or lease prior to finalizing the transaction and bears the risk of all inaccuracies.

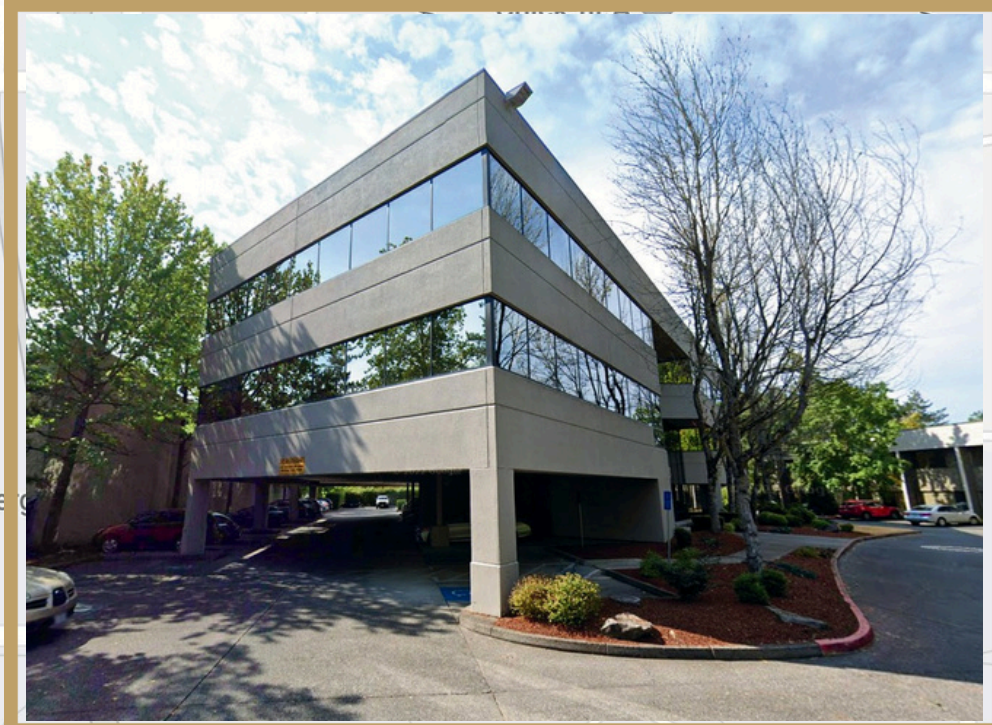
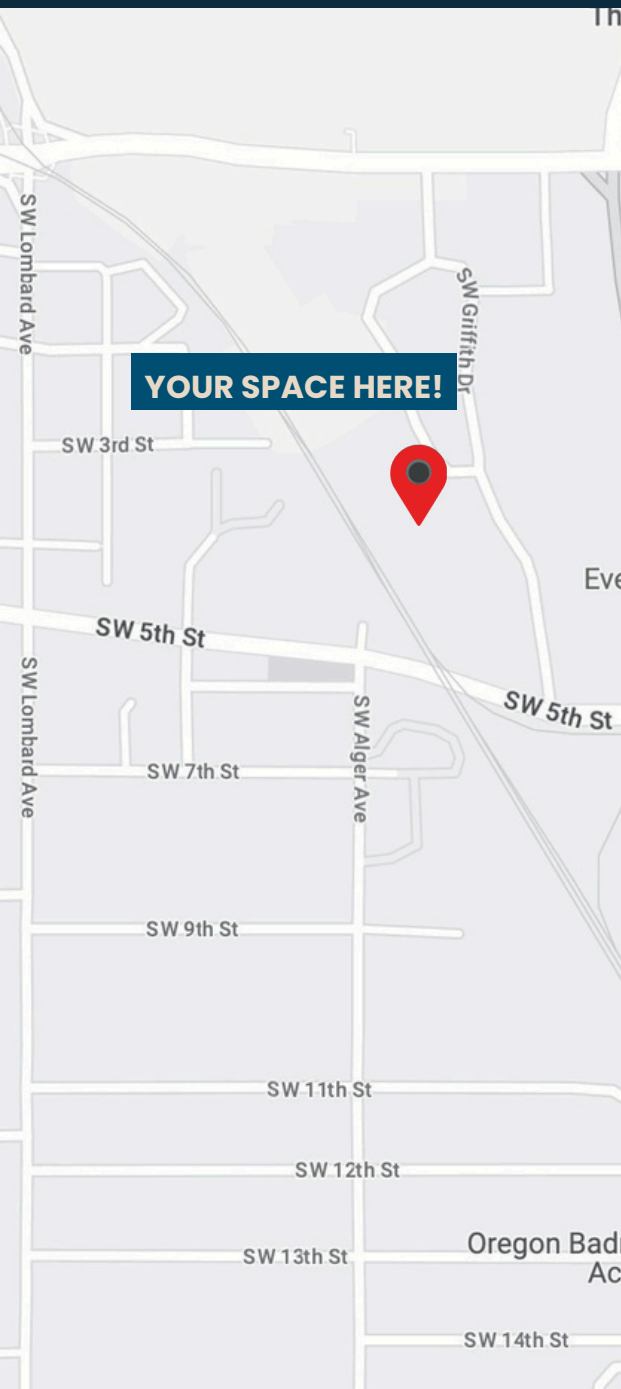


COMMERCIAL & RESIDENTIAL
MANAGEMENT GROUP

**\$21.00/SF
FULL SERVICE**

BEAVERTON OFFICE SPACE

4915 SW GRIFFITH DR, BEAVERTON OR 97005



- Quality office spaces in Central Beaverton across from Beaverton Fred Meyer.
- Easy access to Hwy 217, Hwy 26 & I-5
- Onsite parking: Parking ration approx. 3/1000sqft
- Griffith Park setting
- Suites 300, 216 & 205 available



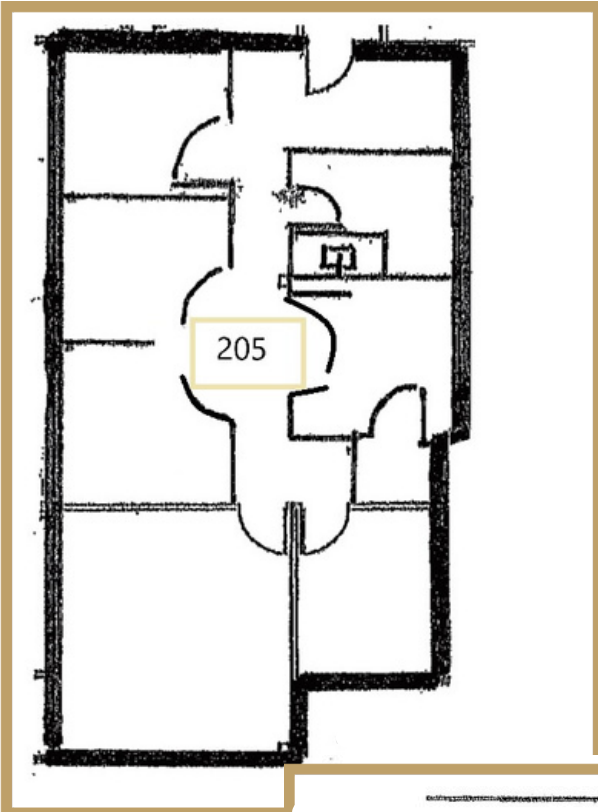
SCOTT WEIGEL | BROKER | SCOTTW@CRMGCO.COM | (503) 802-2538
JILL KEOPPEL | PRINCIPAL BROKER | JILLK@CRMGCO.COM | (971) 353-2079
WWW.CRMGCO.COM | 9400 SW BARNES RD, PORTLAND, OR 97225

The information in this package was gathered from sources deemed reliable, however C&R Management Group, makes no representation or warranty of the accuracy of the information. Any buyer or tenant considering purchase or lease of this property should confirm any and all information relied upon in making the decision to purchase or lease prior to finalizing the transaction and bears the risk of all inaccuracies.



BEAVERTON OFFICE SPACE

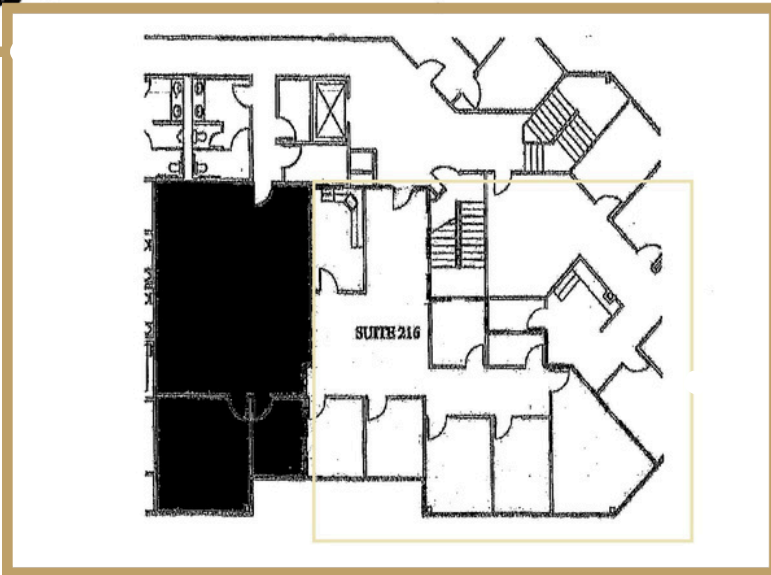
4915 SW GRIFFITH DR, BEAVERTON OR 97005



SUITE 205



SUITE 300



SUITE 216

SCOTT WEIGEL | BROKER | SCOTTW@CRMGCO.COM | (503) 802-2538
JILL KEOPPEL | PRINCIPAL BROKER | JILLK@CRMGCO.COM | (971) 353-2079
WWW.CRMGCO.COM | 9400 SW BARNES RD, PORTLAND, OR 97225

The information in this package was gathered from sources deemed reliable, however C&R Management Group, makes no representation or warranty of the accuracy of the information. Any buyer or tenant considering purchase or lease of this property should confirm any and all information relied upon in making the decision to purchase or lease prior to finalizing the transaction and bears the risk of all inaccuracies.

