

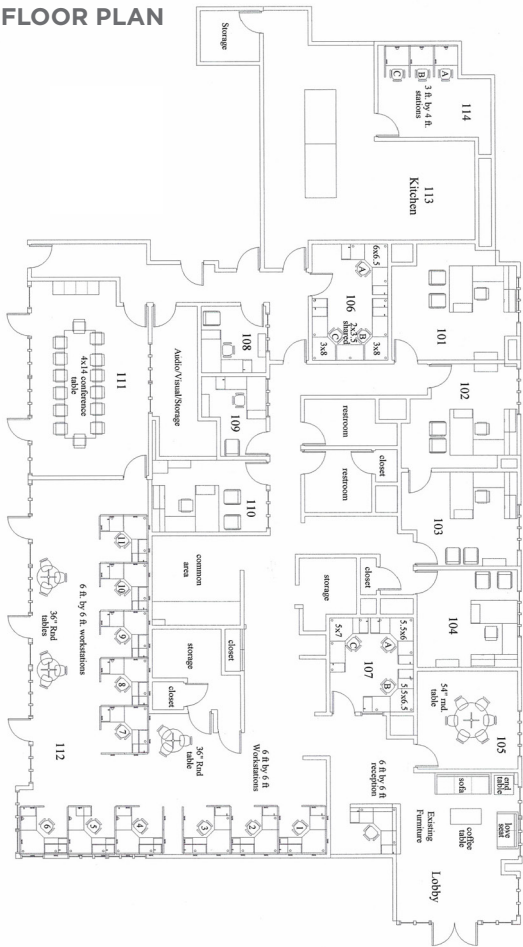


FOR SUBLEASE
±7,774 RSF
GROUND FLOOR
OFFICE SPACE
LOCATED IN
NORTH WATERFRONT

1621
MONTGOMERY
STREET
SAN FRANCISCO, CA



FLOOR PLAN



PROPERTY HIGHLIGHTS

- Ground floor office now available for sublease
- Direct access to courtyard
- 5 Window lined meeting rooms/private offices
- 6 Internal meeting rooms/private offices
- 1 Large board room
- Open space with 11 workstations (room for more)
- Private restrooms
- Lobby/Reception area
- Large kitchen/break room
- Multiple storage closets
- Furniture included
- Term through August 31, 2029

For more information, contact:

DANNY PICKARD
Director
+1 415 773 3572
danny.pickard@cushwake.com

425 Market Street, Suite 2300
San Francisco, CA 94105
+1 415 397 1700
cushmanwakefield.com