

# SALE

**MODERN 30' CLEAR WAREHOUSE  
OWNER-USER OPPORTUNITY**

**MAJOR PROPERTIES**  
REAL ESTATE  
Commercial · Industrial

**8730  
CROCKER  
STREET**

**≈ 49,399 SF  
INDUSTRIAL  
BUILDING**

# EXECUTIVE SUMMARY

**8730 Crocker St., Los Angeles, CA 90003**  
**For Sale | ±49,399 SF Building on ±49,350SF Lot**

8730 Crocker Street is ±49,399 SF industrial facility with ±10,000 SF of mezzanine space, strategically located in South Los Angeles with immediate access to I-110, I-105, and Downtown LA. Situated on ±49,350 SF of land and zoned M2 (City of Los Angeles), the property offers exceptional functionality for warehousing, distribution, light manufacturing, and logistics users.

The building features 30' clear height, five loading docks, and 14' clearance under the mezzanine, supported by high-quality office improvements on both floors. The ground floor includes 2 private offices, a breakroom, and 2 restrooms, while the second floor provides 4+ offices, HVAC-served workspace, and 2 restrooms.

For sale at \$13,950,000 or for lease at \$1.10/SF NNN (~\$0.19 nets), this offering presents an ideal opportunity for owner-users, investors, and tenants seeking a high-clearance, dock-high, and move-in-ready facility in a prime infill location.

8730 Crocker

*Exclusively listed by*

**JESSE MCKENZIE**

Senior Vice President

714.883.6875

jesse@majorproperties.com

CalBRE License # 01939062



\*Buyer to verify all information

**\$13,950,000**  
PRICE

**±\$282**  
PER SF

Delivered vacant and featuring modern warehouse design with  $\pm 10,000$  SF mezzanine space

---

M2 Zoning in South Los Angeles — Allows for a wide range of industrial uses including warehousing, logistics, and manufacturing

---

High-Clearance Warehouse — 30' clear height with efficient column spacing ideal for racking, storage, or distribution operations

---

Five Loading Docks — Functional loading design supports seamless logistics and goods movement

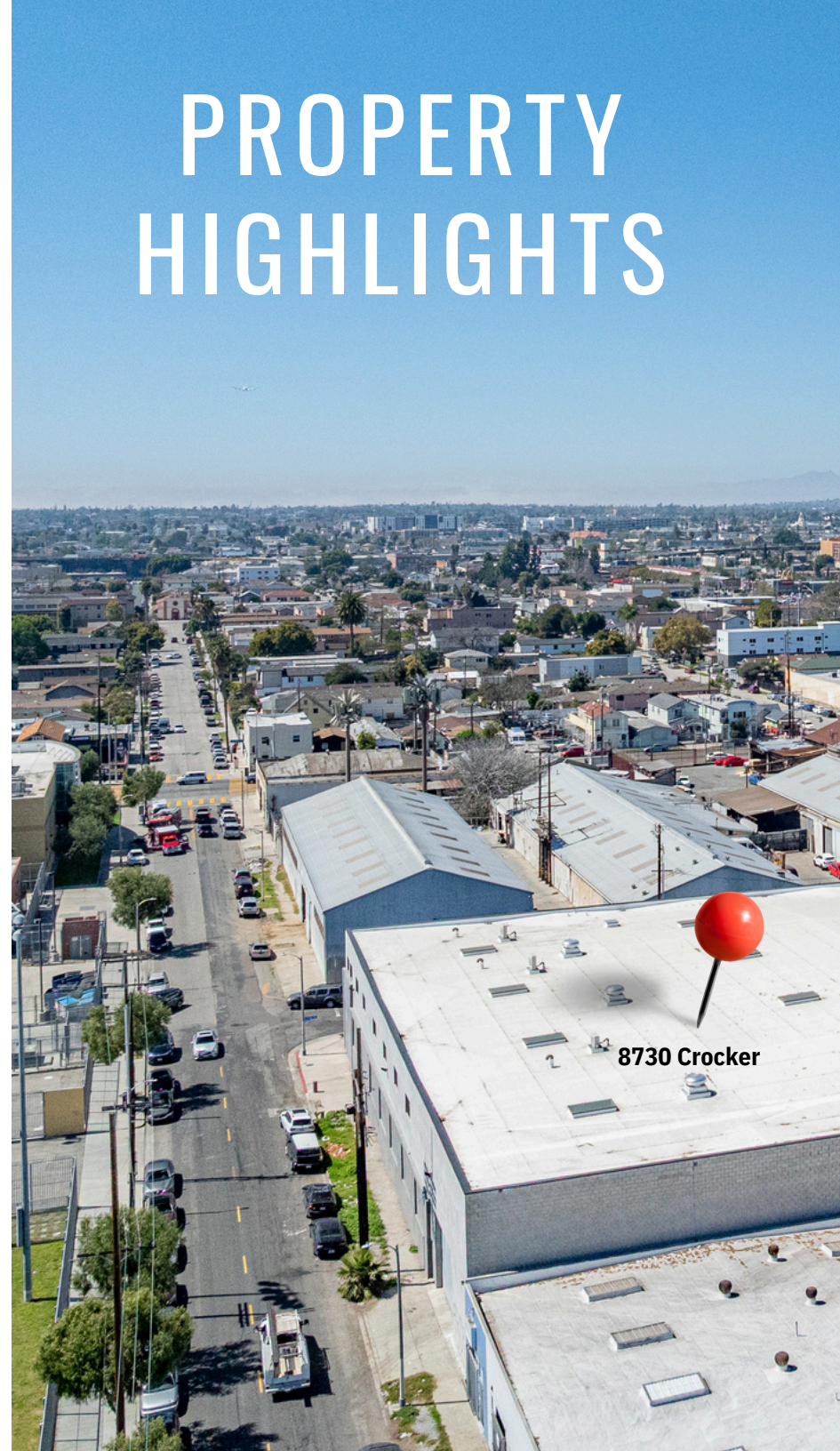
---

Heavy Power Infrastructure — Equipped with 400 amps, 3-phase, 4-wire power to support manufacturing or high-load tenants

---

Exceptional Accessibility — Immediate access to I-110 and I-105, with proximity to I-10 and major freight corridors

# PROPERTY HIGHLIGHTS

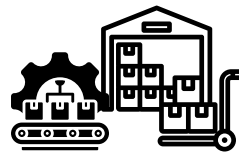


# PROPERTY DETAILS

8730 Crocker St., Los Angeles, CA 90003



8730 Crocker



Manufacturing or Warehousing uses allowed



Brand New Building



Multiple Loading Docks

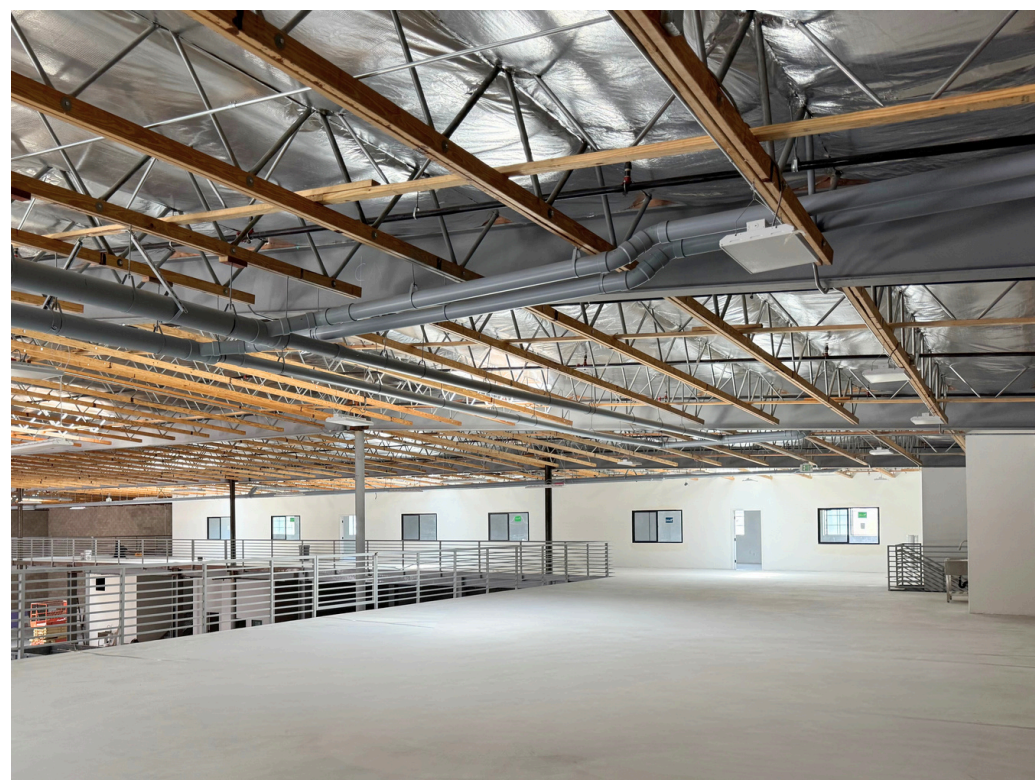


Ample Parking

Building Size	±49,399 SF Industrial Building <ul style="list-style-type: none"> <li>±39,399 SF Ground Floor</li> <li>±10,000 SF Mezzanine</li> </ul>
Lot Size	±49,399 SF
Office Buildout	<ul style="list-style-type: none"> <li>Downstairs: 2 private offices, breakroom, 2 restrooms (Men/Women), No A/C</li> <li>Upstairs: 4+ offices, HVAC, 2 restrooms (Men/Women)</li> </ul>
Asking Price	<b>\$13,950,000 (\$282PER SF)</b>
Frontage	Crocker St
Tenancy	Single
Parking	23 Surface
Stories	1
Clear Height	30' (14' under mezzanine)
Docks	4 ground level & 1 dock high loading
Power	400 Amps, 3-Phase, 4-Wire
Sprinklered	Yes (Call broker for details)
Construction	Masonry
Year Built	2026
Zoning	M2
APN	6041-018-020

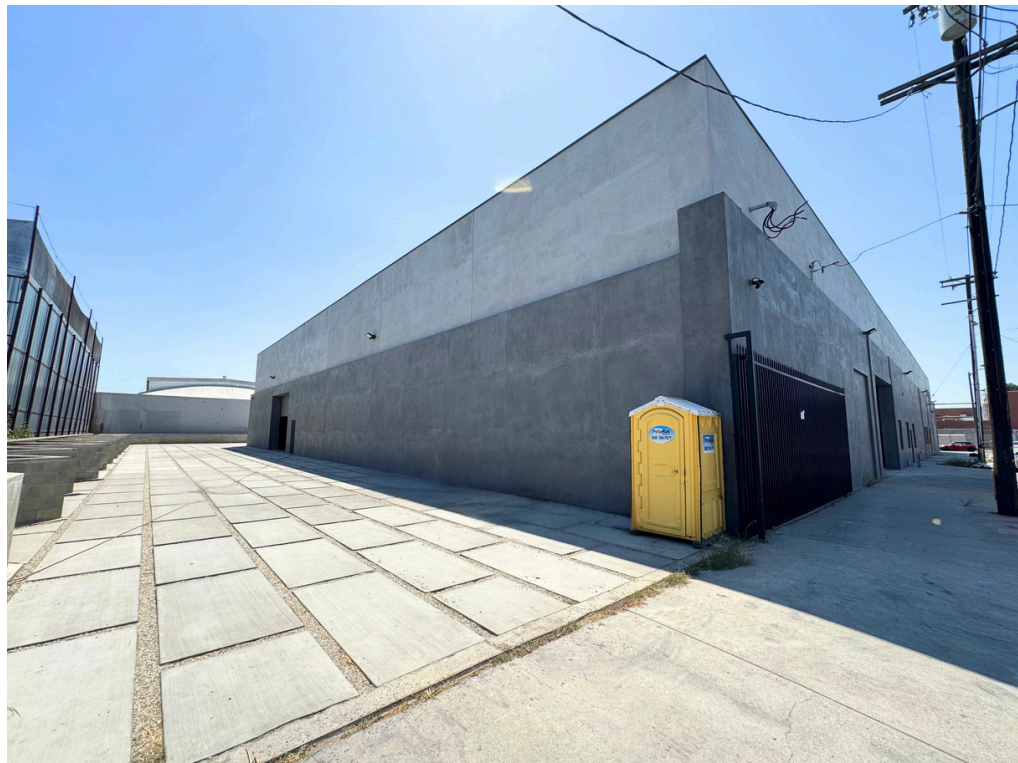






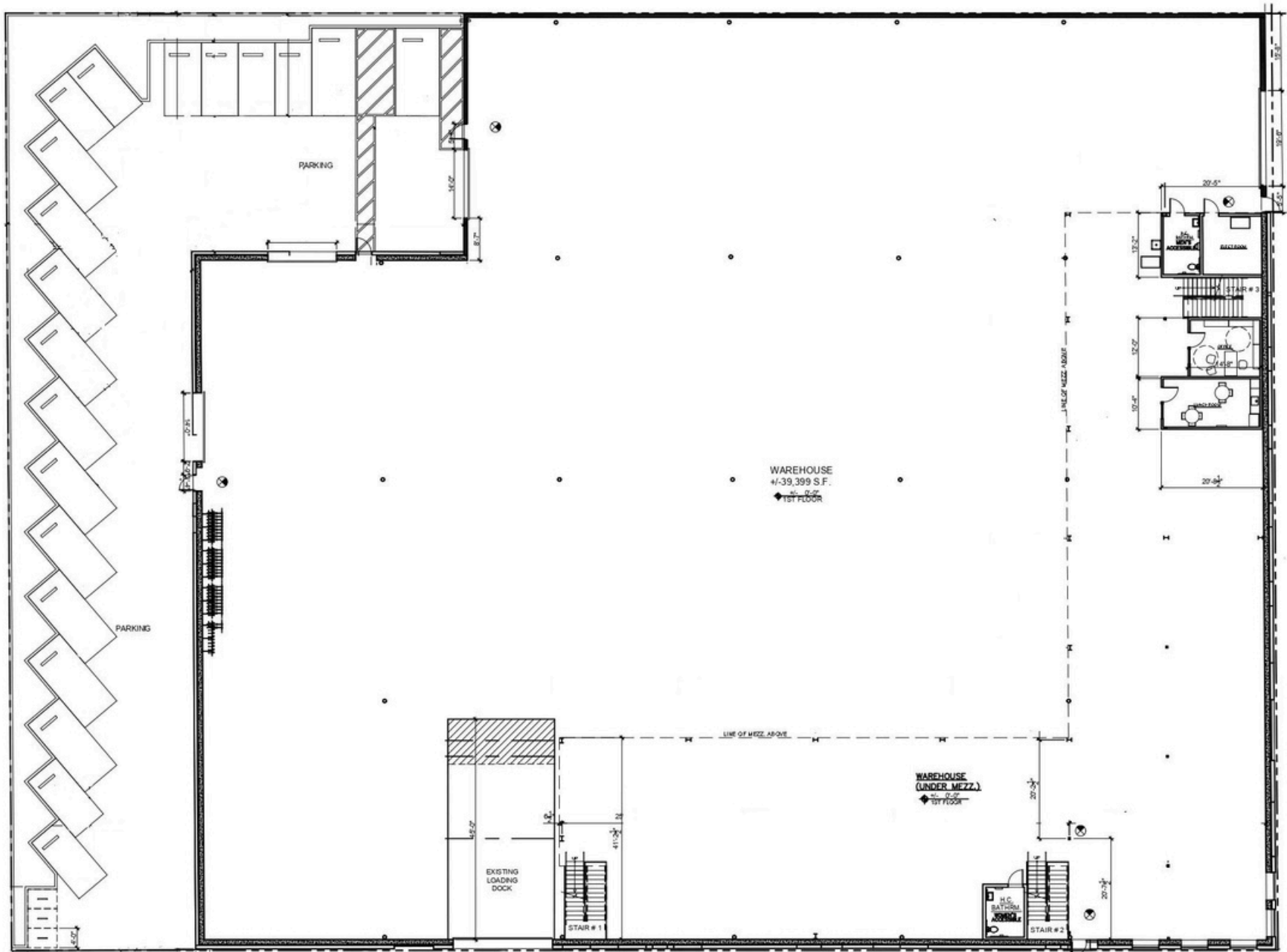


Crocker St  
10457



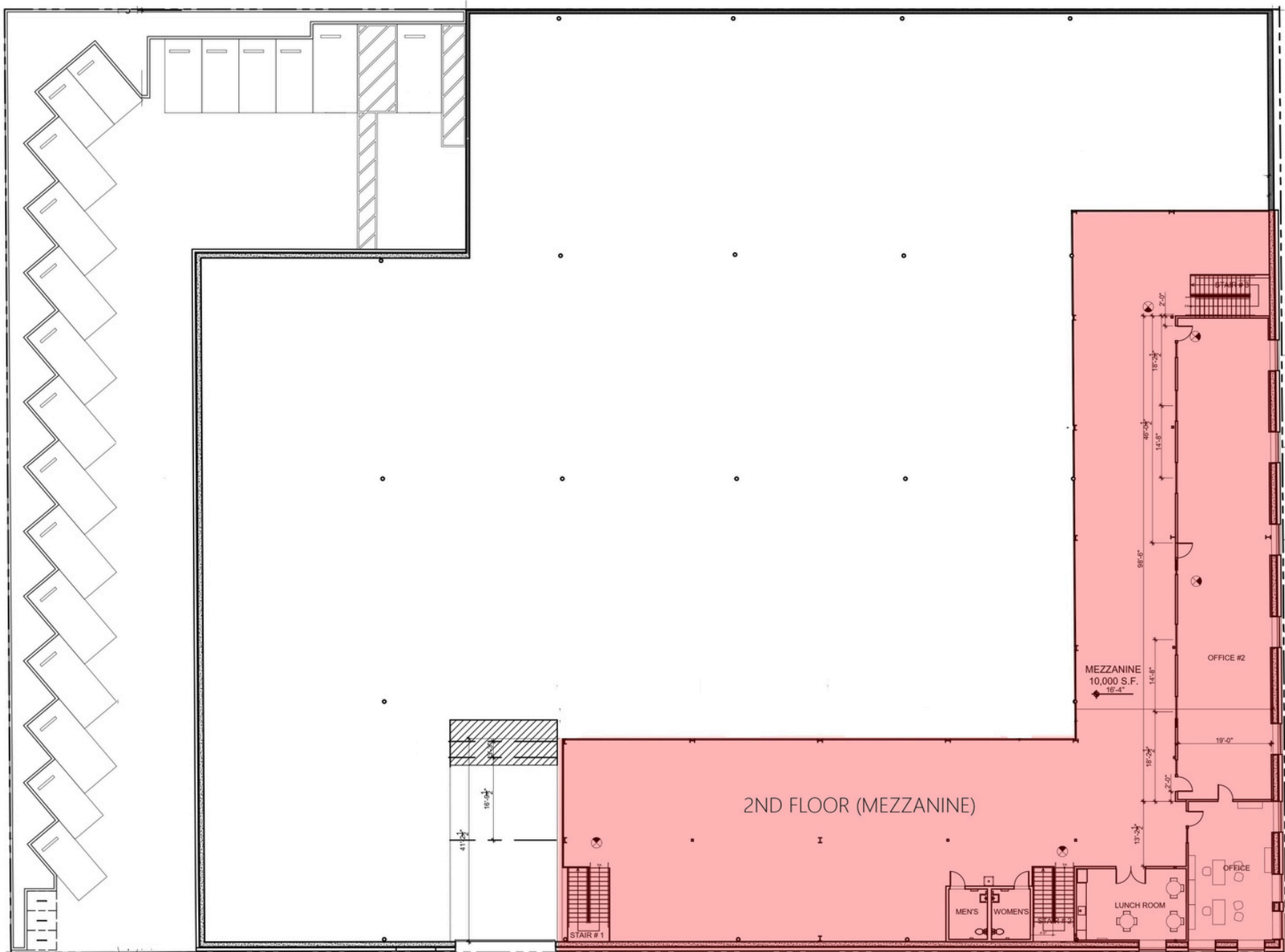
# FLOOR PLAN

FIRST FLOOR

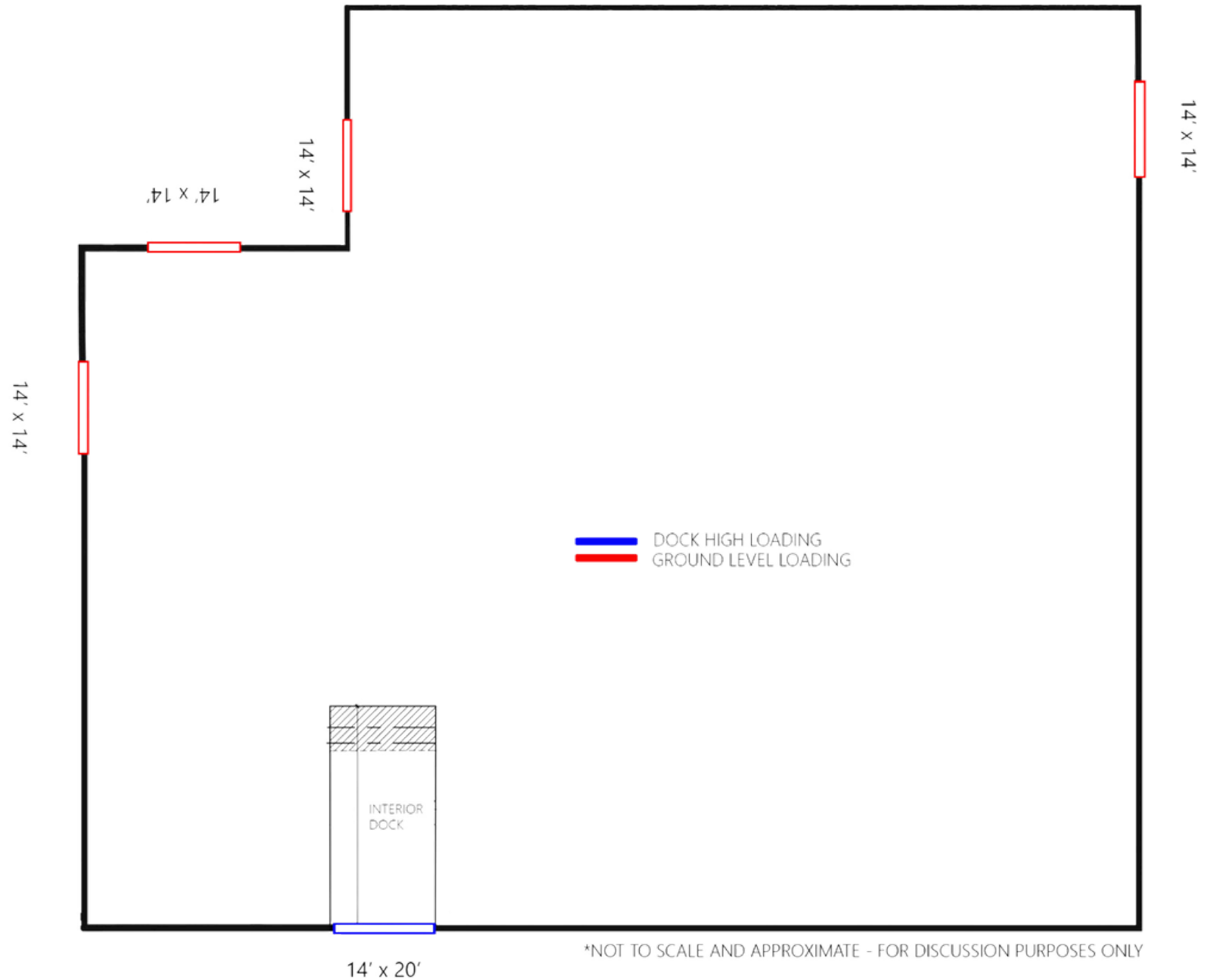


# FLOOR PLAN

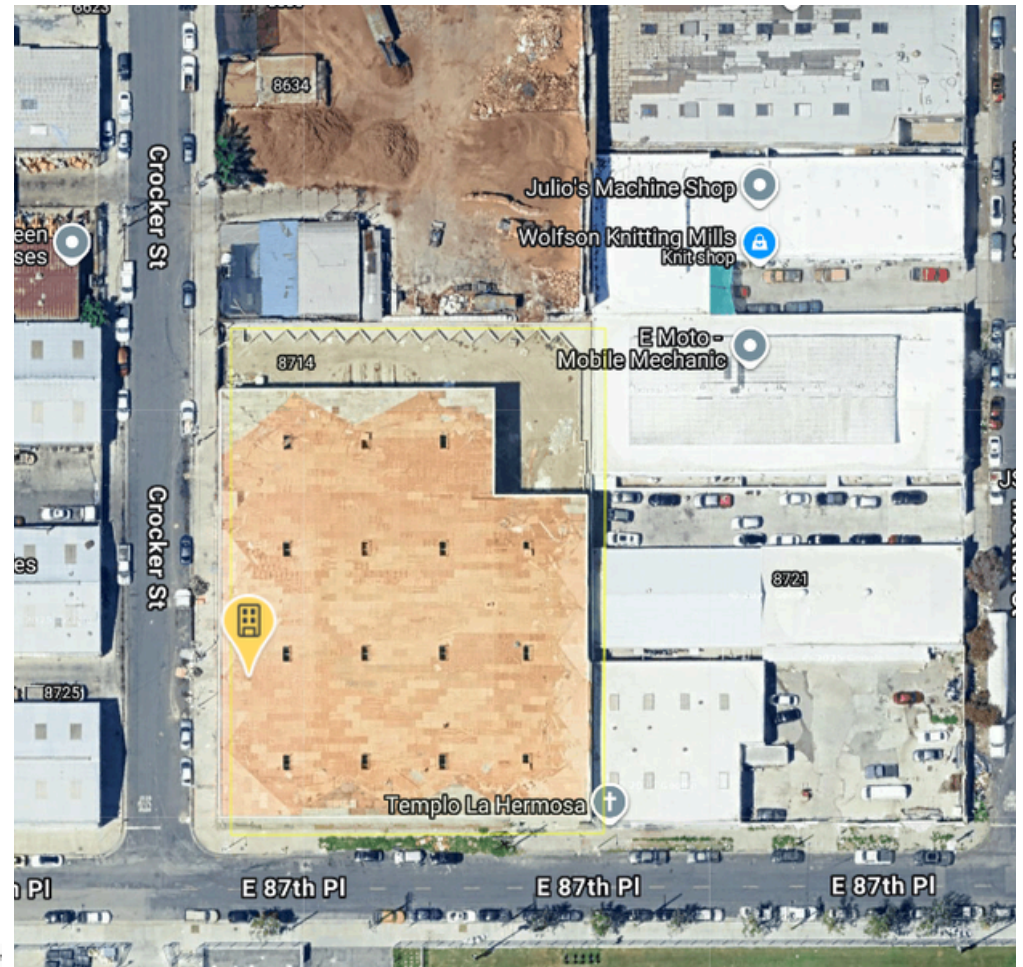
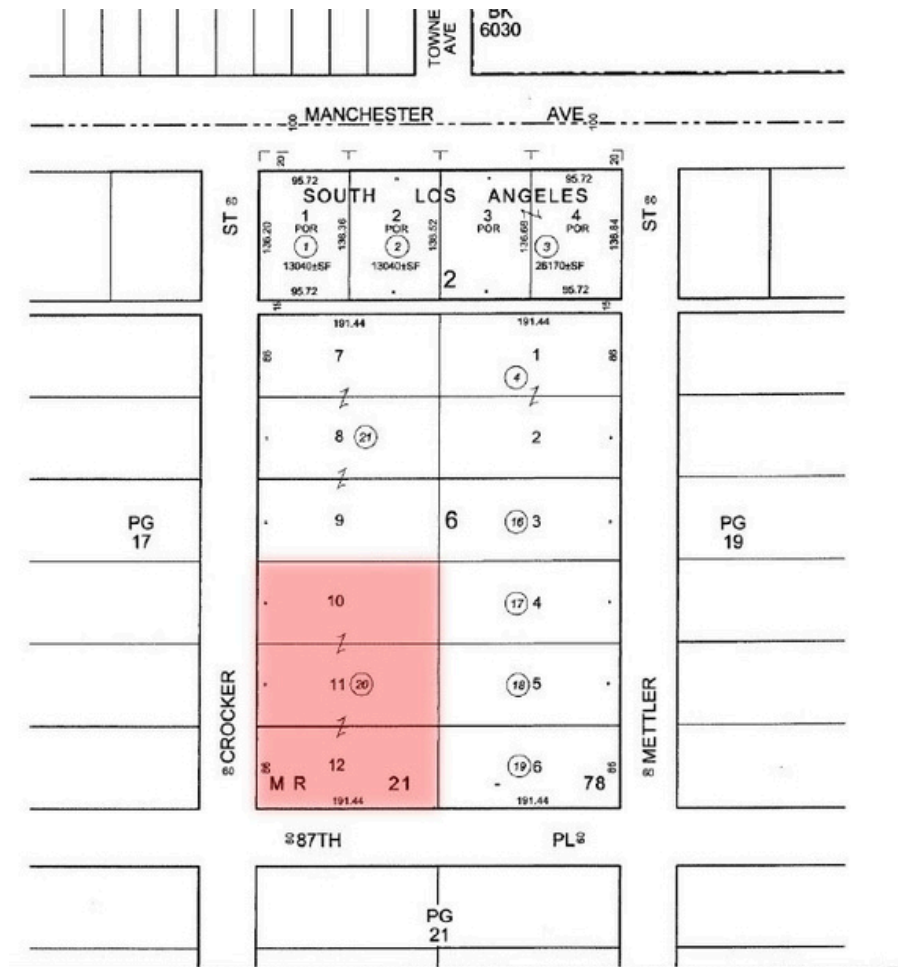
SECOND FLOOR



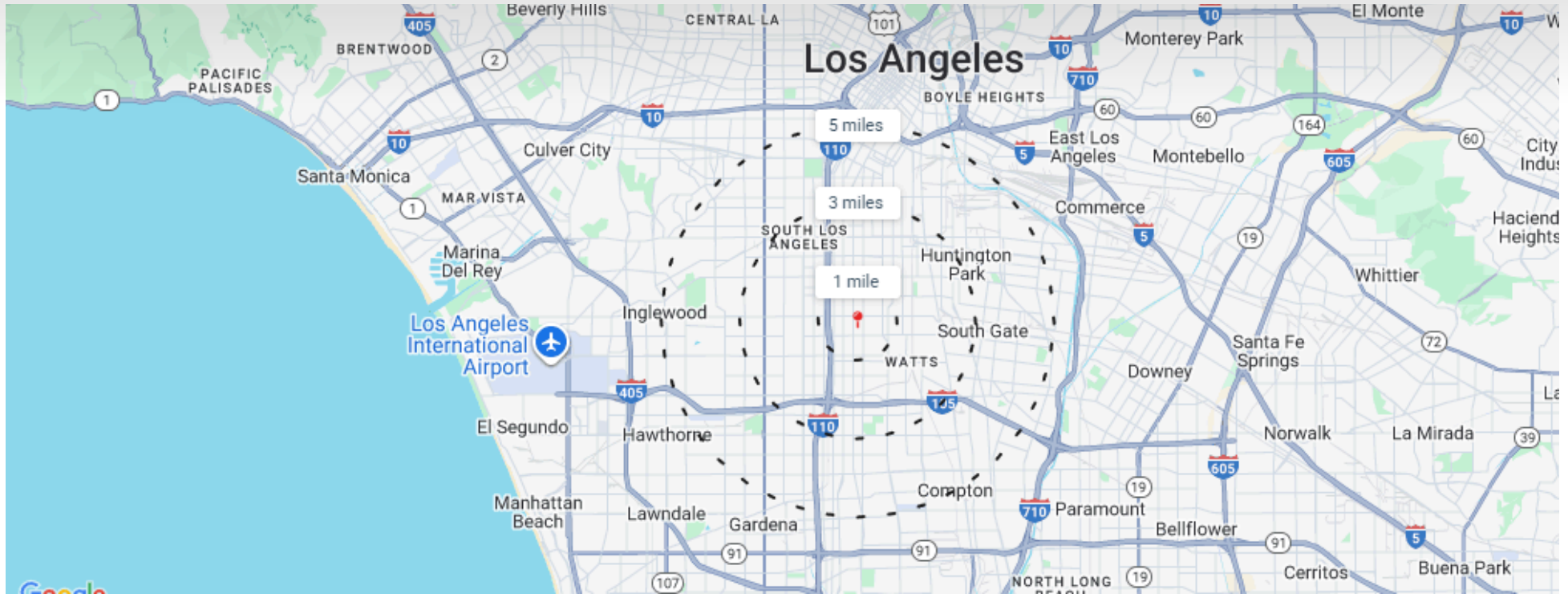
# LOADING DOCKS LAYOUT



# PARCEL MAP



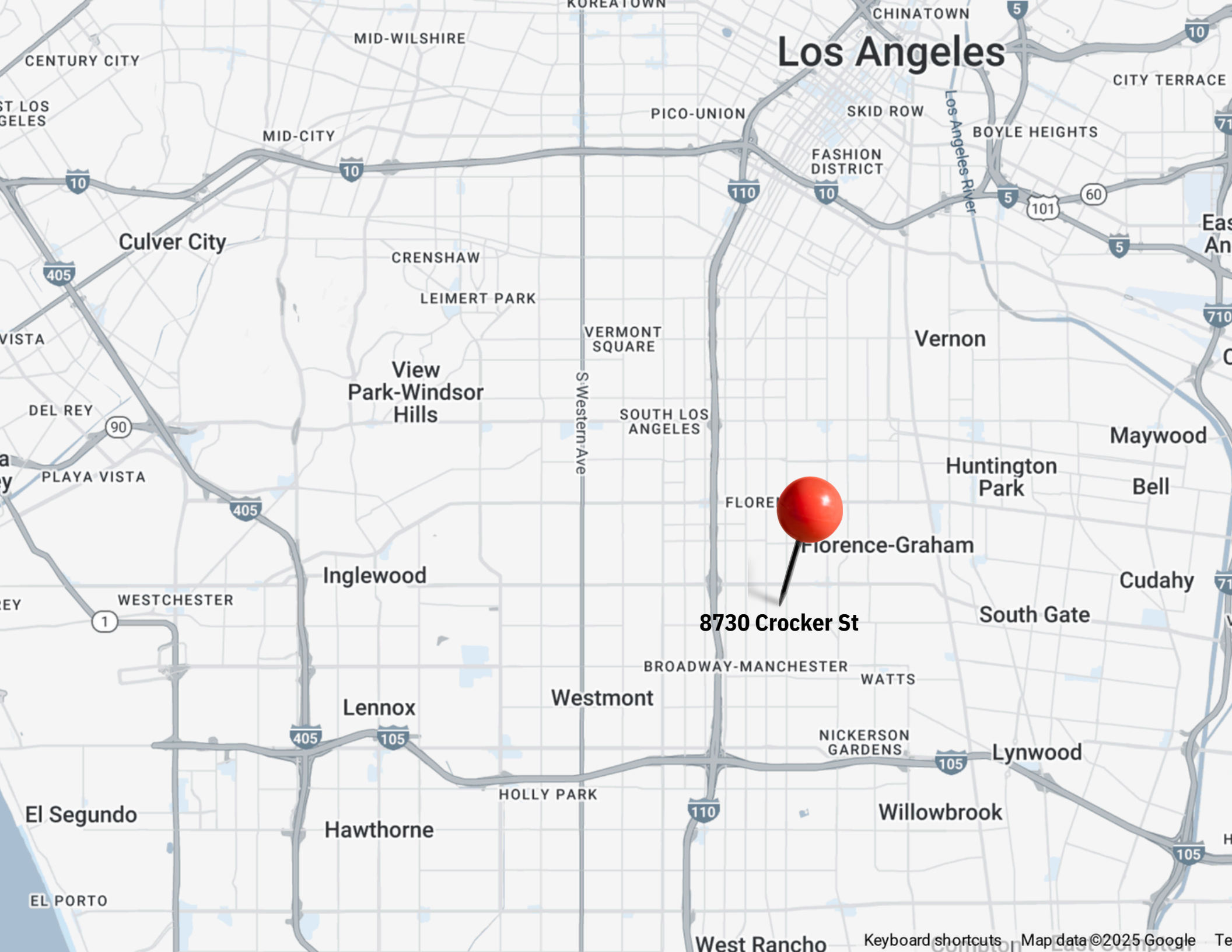
# GREAT FREEWAY ACCESS



## Key Access & Distance Table

<b>DESTINATION</b>	<b>DISTANCE</b>	<b>APPROX. DRIVE TIME</b>
Interstate-110 (Harbor Freeway)	~1.3 miles	~5 minutes
Interstate-105 (Century Freeway)	~2.5 miles	~8 minutes
Downtown Los Angeles	~8.5 miles	~15 minutes
Los Angeles International Airport (LAX)	~9.2 miles	~17 minutes
Port of Long Beach	~18.8 miles	~26 minutes

# Los Angeles



**8730 Crocker St**

# PROPOSED SBA 504 LOAN SCENARIO

8730 Crocker St., Los Angeles, CA 90003



Business Finance Capital

BUILDING ACQUISITION	\$13,950,000
TENANT IMPROVEMENTS	\$0
SBA/CDC FEES	\$112,000
<b>TOTAL PROJECT COST</b>	<b>\$14,062,000</b>

SOURCE OF FUNDS		AMOUNT	RATES	MATURITY	COLLATERAL	MONTHLY PAYMENT	ANNUAL PAYMENT
BANK	55%	\$7,667,000	5.90%	10 Years 25 Yr. Amort.	1st Deed	\$48,931	\$587,172
SBA 504 LOAN	35%	\$5,000,000	6.23% Aug '25	25 Years Full Amort.	2nd Deed	\$32,931	\$395,171
BORROWER	10%	\$1,395,000					
<b>TOTAL</b>	<b>100%</b>	<b>\$14,062,000</b>				<b>\$81,862</b>	<b>\$982,343</b>

**RATES:** Bank: Rate is estimated - will vary depending on lender.  
SBA 504: Rate is FIXED at the time of the debenture sale.

**FEES:** Bank: Vary depending on lender policy.  
SBA/CDC: 2.15%\* of SBA loan plus legal fees are financed, and therefore included in the SBA loan amount.  
MISC: Related costs may be included in the SBA 504 Loan including: Appraisal, environmental report (if required), and escrow closing costs (including insurance and legal closing costs).

**COLLATERAL:** 90% financing generally does not require additional collateral.

**FOR MORE INFORMATION REGARDING THIS  
OPPORTUNITY, PLEASE CONTACT:**



**JESSE MCKENZIE**

Senior Vice President

714.883.6875

[jesse@majorproperties.com](mailto:jesse@majorproperties.com)

License: CA # 01939062

The information contained in this offering material is confidential and furnished solely for the purpose of a review by prospective Buyers of the subject property and is not to be used for any other purpose or made available to any other person without the express written consent of Major Properties.

This Brochure was prepared by Major Properties. It contains summary information pertaining to the Property and does not purport to be all-inclusive or to contain all of the information that a prospective Buyer may desire. All information is provided for general reference purposes only and is subject to change. The summaries do not purport to be complete or accurate descriptions of the full documents involved, nor do they constitute a legal analysis of such documents.

This information has been secured from sources we believe to be reliable. We make no representations or warranties, expressed or implied, as to the accuracy of the information. References to square footage or age are approximate. Recipient of this report must verify the information and bears all risk for any inaccuracies.

[MajorProperties.com](http://MajorProperties.com)

**MAJOR PROPERTIES**

1200 W Olympic Blvd

Los Angeles, CA 90015

