

FOR SUBLEASE

# Civica Office Commons South Building

205 108th Ave NE, Bellevue, WA 98004

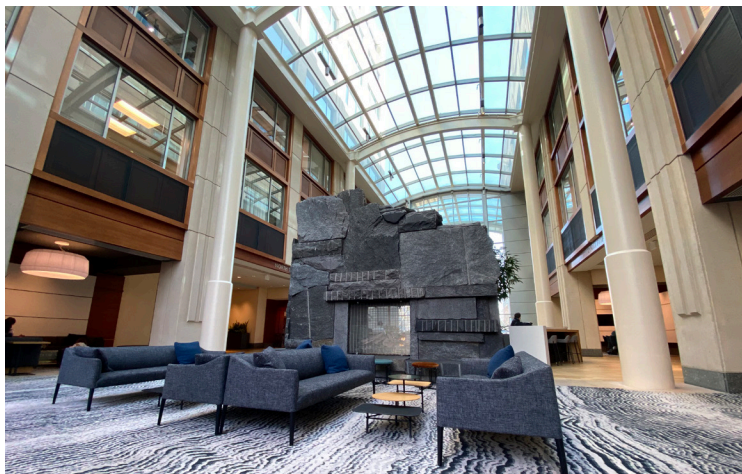




# SOUTH TOWER

## Property Highlights

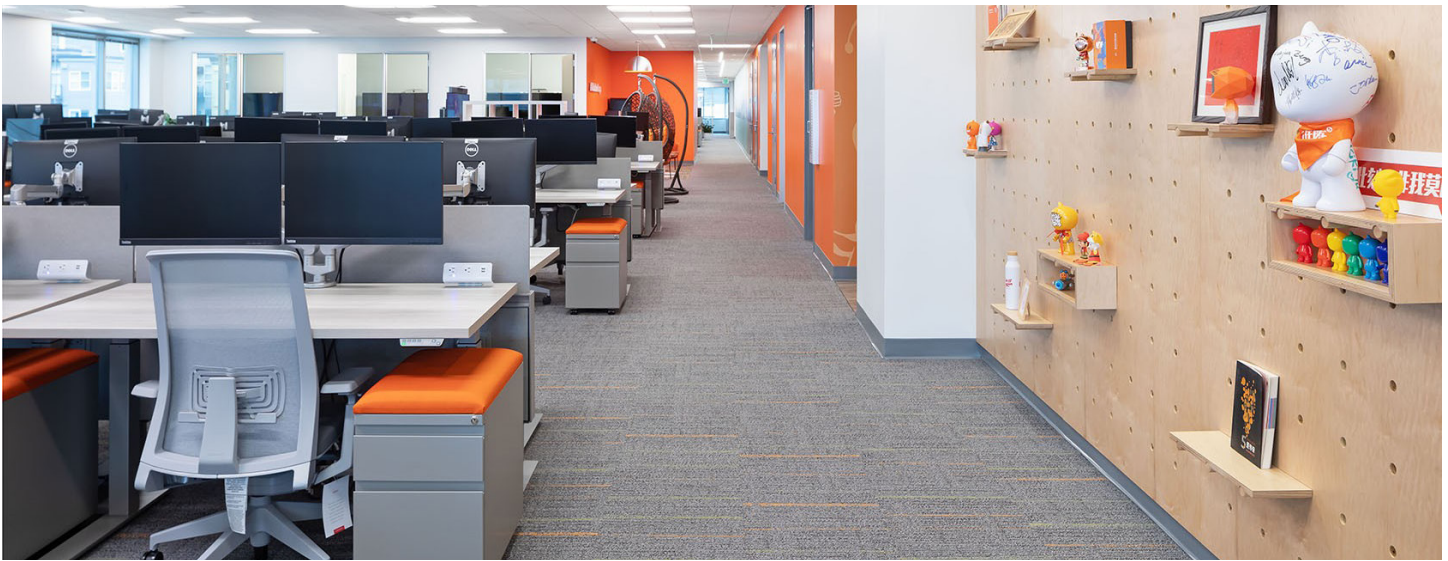
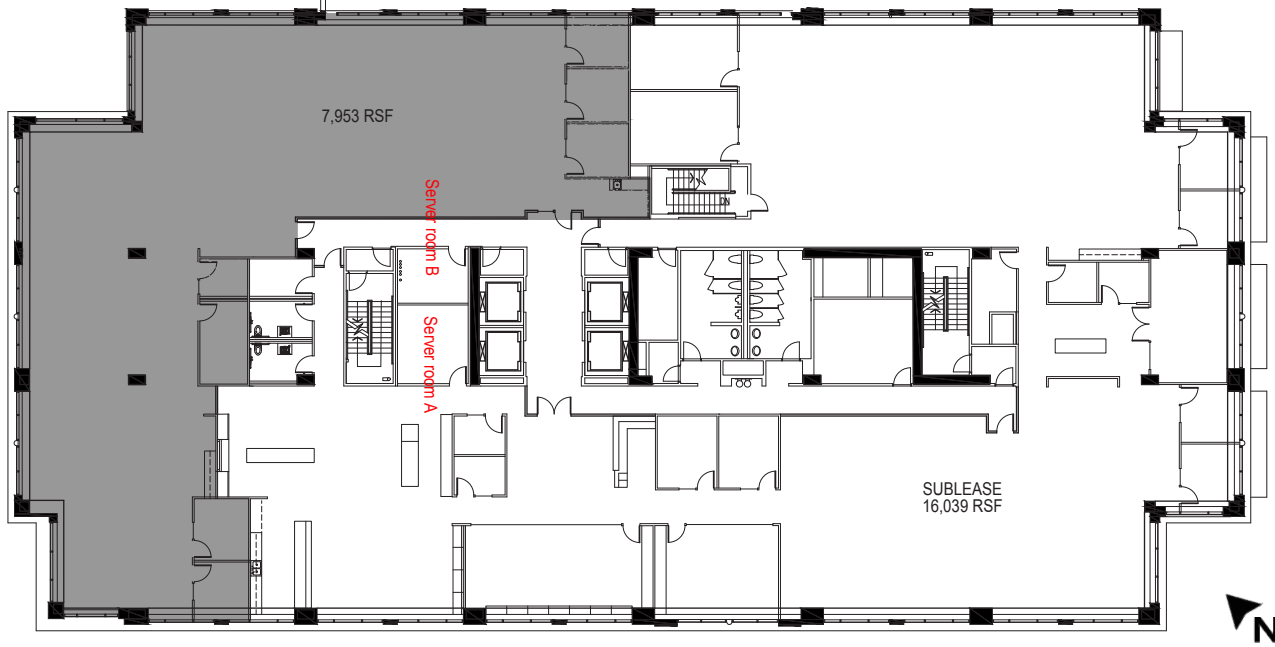
- Fourth Floor - 16,039 RSF
- Aggressive well below market rate
- Available Immediately
- Rare full floor sublease opportunity
- Tenant improvement allowance available
- Flexible sublease terms available
- On-site Seastar Restaurant & Raw Bar
- Project features include Great Room with concierge service, on-site fitness center and conference room and training facility for large groups
- Close to all downtown Bellevue amenities
- Above standard parking ratio of 3.4 /1,000
- High end plug and play tech space w/ furniture available





South Tower - Available Immediately

Fourth Floor - 16,039 RSF





# CIVICA OFFICE COMMONS SOUTH BUILDING

## PLEASE CONTACT:

### Brian Biege

Senior Vice President  
+1 425 462 6914  
brian.biege@cbre.com

### Jacob Hamlin

Associate  
+1 425 462 6930  
jacob.hamlin@cbre.com

### CBRE, Inc.

929 108th Ave NE  
Suite 700  
Bellevue, WA 98004

205 108th Ave NE, Bellevue, WA 98004

© 2022 CBRE, Inc. All rights reserved. This information has been obtained from sources believed reliable, but has not been verified for accuracy or completeness. You should conduct a careful, independent investigation of the property and verify all information. Any reliance on this information is solely at your own risk. CBRE and the CBRE logo are service marks of CBRE, Inc. All other marks displayed on this document are the property of their respective owners, and the use of such logos does not imply any affiliation with or endorsement of CBRE. Photos herein are the property of their respective owners. Use of these images without the express written consent of the owner is prohibited. 9-2-22MR