

MEDICAL SPACE FOR LEASE

Ritchie Medical Plaza

310 N. Smith Avenue, St. Paul, MN 55102



MEDICAL SPACE FOR LEASE

Ritchie Medical Plaza

310 N. Smith Avenue, St. Paul, MN 55102

Building Information:

Address:	310 N. Smith Ave, St. Paul, MN 55102
Total Rentable Square Foot	52,116 rsf
Space Available	9,933 rsf
Maximum Contiguous Space	9,933 rsf
Number of Floors	4

Amenities:

- Located on United and Children's Hospital campuses
- Excellent visibility
- Easy access to I-35E and I-94
- Ample parking in attached ramp and adjoining surface lots
- Accessible via tunnel and skyway with ample parking
- Conveniently close to downtown St. Paul dining, shopping, lodging
- Referral relationships among peers

Anchor Tenants:

Allina Health
Children's Health Care
Children's Respiratory

Terms and availability subject to change without prior notice.

For Leasing Information:

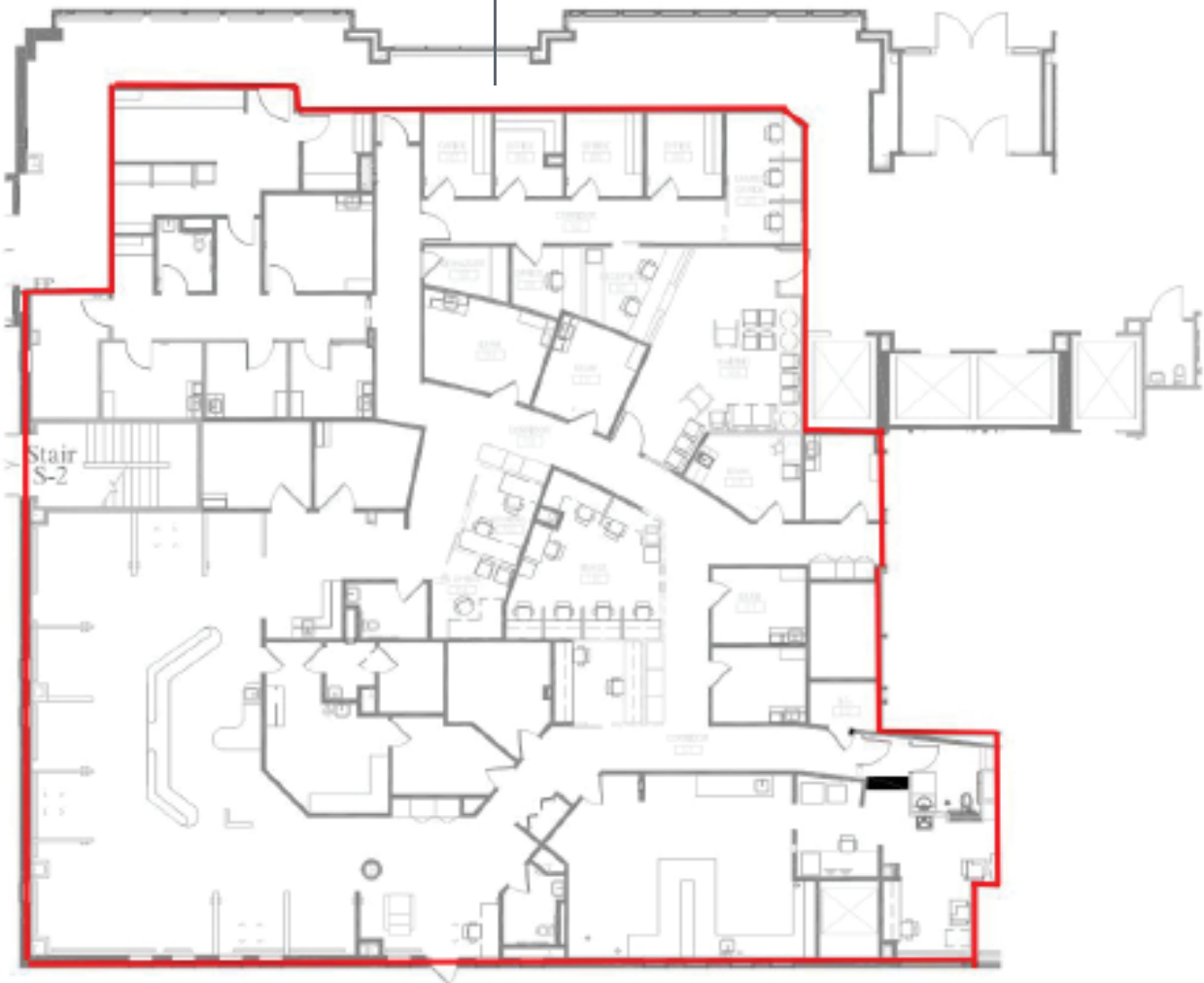
Mike Fleetham | 952-767-2842 | MFleetham@MedCraft.com

Jolene Ludvigsen | 952-838-7126 | JLudvigsen@MedCraft.com



First FLOOR

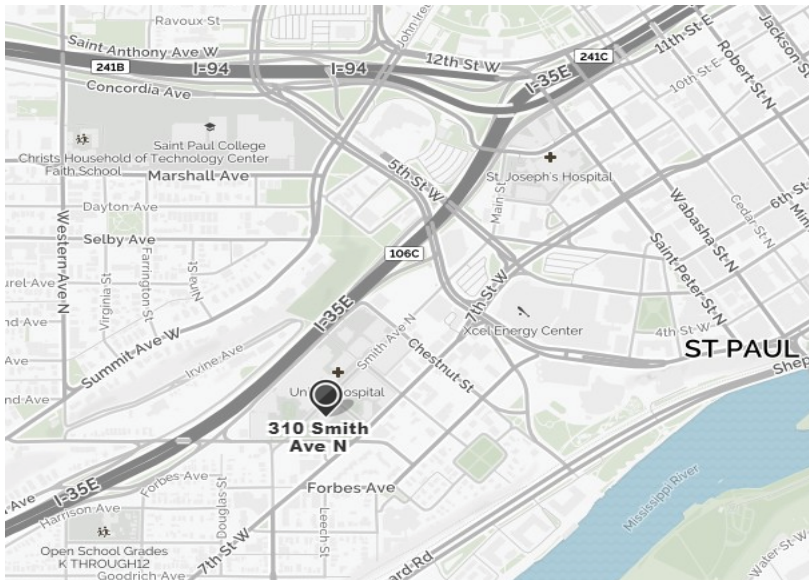
Suite 100
AVAILABLE
9.933 RSF



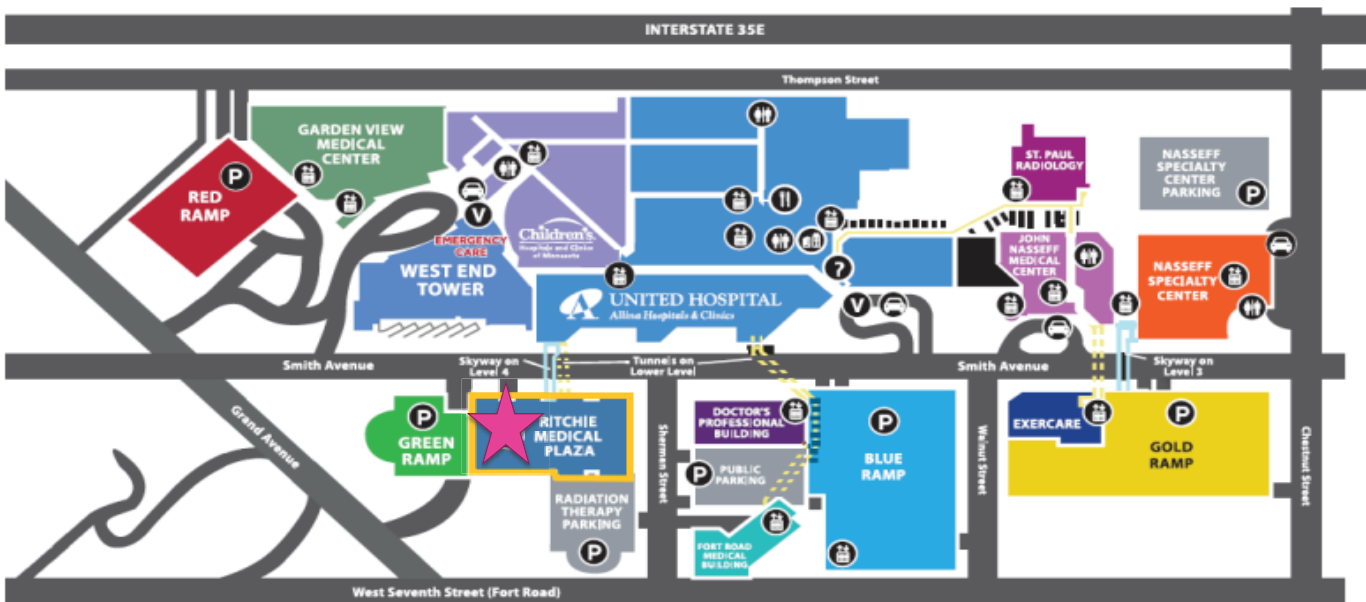
MEDICAL SPACE FOR LEASE

Ritchie Medical Plaza

310 N. Smith Avenue, St. Paul, MN 55102



CAMPUS MAP



- DIRECTORY KEY**
- ATM
 - CAFETERIA
 - ELEVATORS
 - GIFT SHOP
 - PARKING
 - RESTROOMS
 - PATIENT PICK-UP
 - INFORMATION
 - VALET
 - SKYWAY
 - TUNNEL

- United Hospital
333 North Smith Avenue
- Children's Hospitals and
Clinics of Minnesota
345 North Smith Avenue
- Doctor's Professional Building
280 North Smith Avenue

- Garden View Medical Center
347 North Smith Avenue
- John Nasseff Medical Center
255 North Smith Avenue
- Milton M. Hurwitz ExerCare
Fitness Center
363 Walnut Street

- Nasseff Specialty Center
225 North Smith Avenue
- Ritchie Medical Plaza
310 North Smith Avenue
- St. Paul Radiology
250 Thompson Street

For Leasing Information:

MIKE FLEETHAM

(952) 767-2842

MFleetham@MedCraft.com

JOLENE LUDVIGSEN

(952) 838-7126

JLudvigsen@MedCraft.com



MedCraft

Healthcare Real Estate

medcraft.com