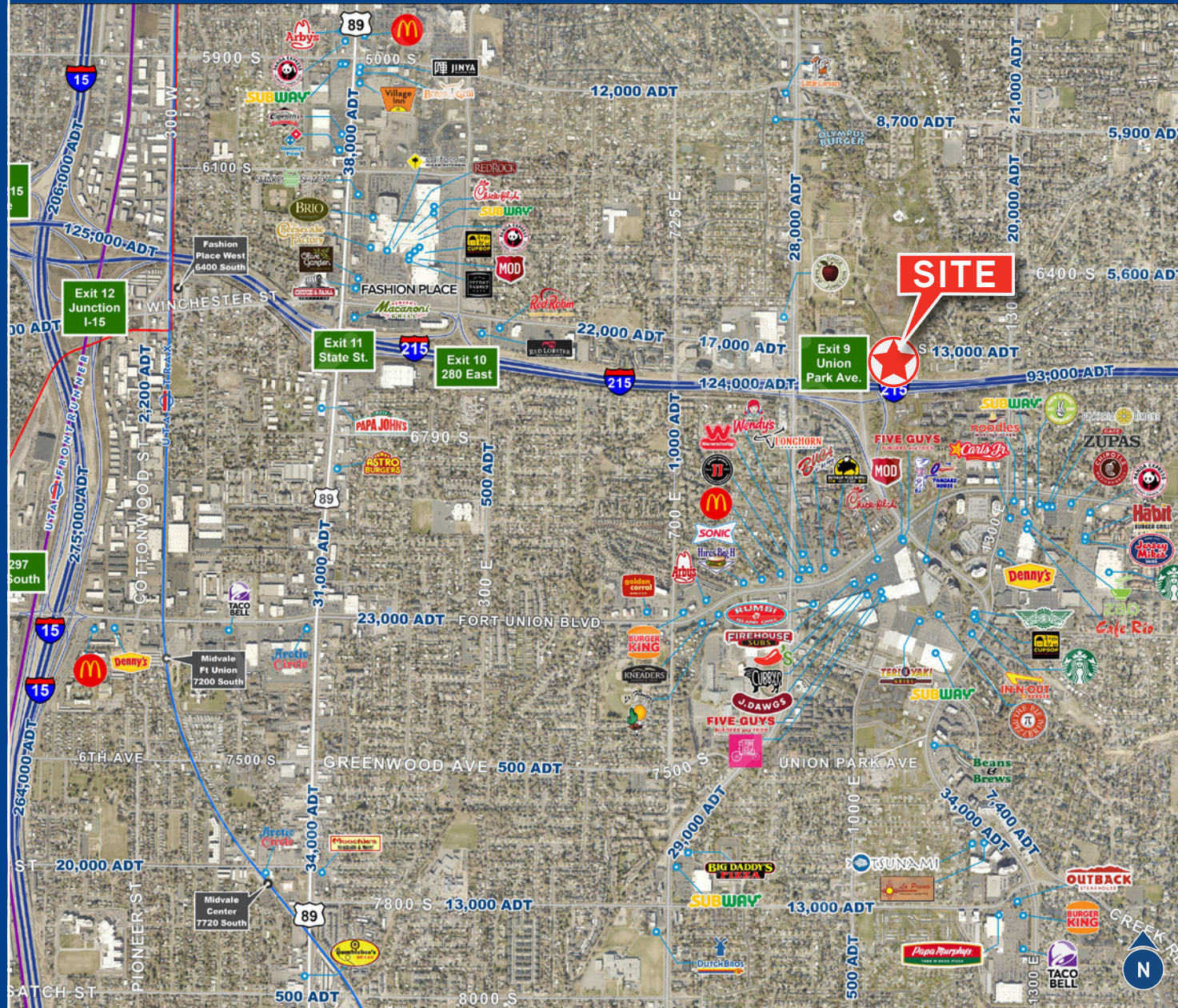


FOR LEASE

# MERRILL LYNCH BUILDING

# MERRILL LYNCH BUILDING



1100 EAST 6600 SOUTH | MURRAY, UTAH

Marketed Exclusively by



**Jordan Wall**  
 +1 801 947 8300  
 jordan.wall@colliers.com

**Brandon Fugal**  
 +1 801 947 8300  
 brandon.fugal@colliers.com



# MERRILL LYNCH BUILDING

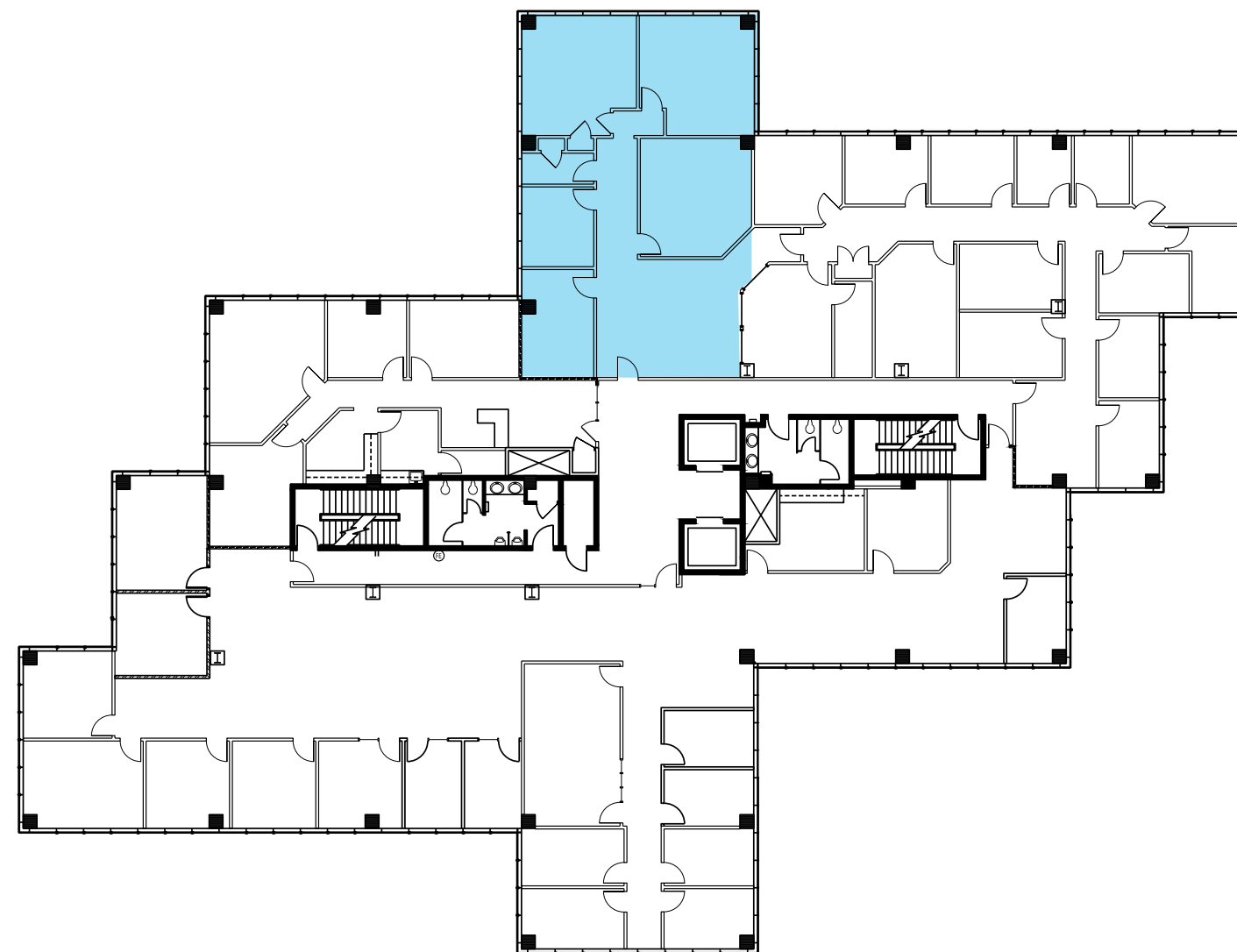


## PROJECT FEATURES

- Prestigious East Bench Location
- Suite 201: 2,055 Rentable Sq. Ft. Available
- Lease rate: \$25.50 Per Sq. Ft. / Full Service
- Direct access to I-215 and 1 minute to I-15
- Newly remodeled lobby and common areas
- Panoramic views of Wasatch Mountains
- Ample parking
- Other leasing incentives available
- Freeway visibility
- Close to both Union Park and Fashion Place area amenities



## 2ND FLOOR



Colliers

**Jordan Wall**  
+1 801 947 8300  
jordan.wall@colliers.com

**Brandon Fugal**  
+1 801 947 8300  
brandon.fugal@colliers.com

This document has been prepared by Colliers International for advertising and general information only. Colliers International makes no guarantees, representations or warranties of any kind, expressed or implied, regarding the information including, but not limited to, warranties of content, accuracy and reliability. Any interested party should undertake their own inquiries as to the accuracy of the information. Colliers International excludes unequivocally all inferred or implied terms, conditions and warranties arising out of this document and excludes all liability for loss and damages arising there from. This publication is the copyrighted property of Colliers International and/or its licensor(s). ©2020 All rights reserved.