

55508

STATE HIGHWAY 19

WINTHROP, MINNESOTA



For Sale Or Lease
82,070 SF



**CUSHMAN &
WAKEFIELD**

// PROPERTY FEATURES



13'-20' CLEAR HEIGHT



14.00 ACRES

WITH ROOM FOR EXPANSION
OR OUTDOOR STORAGE



5,030 SF OFFICE SPACE



7 DOCKS | 5 DRIVE-INS



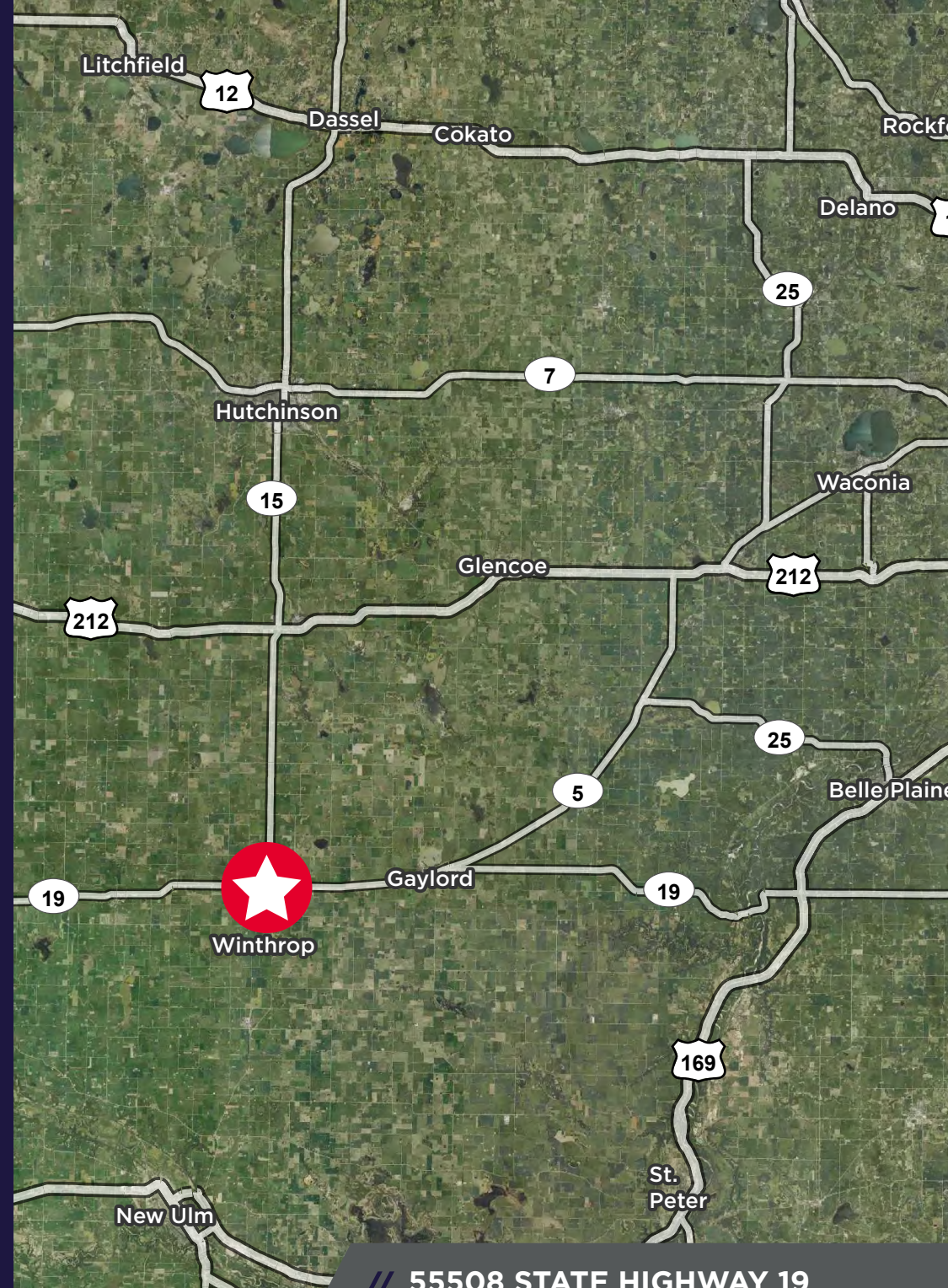
BUILT IN 1978



30 PARKING SPACES

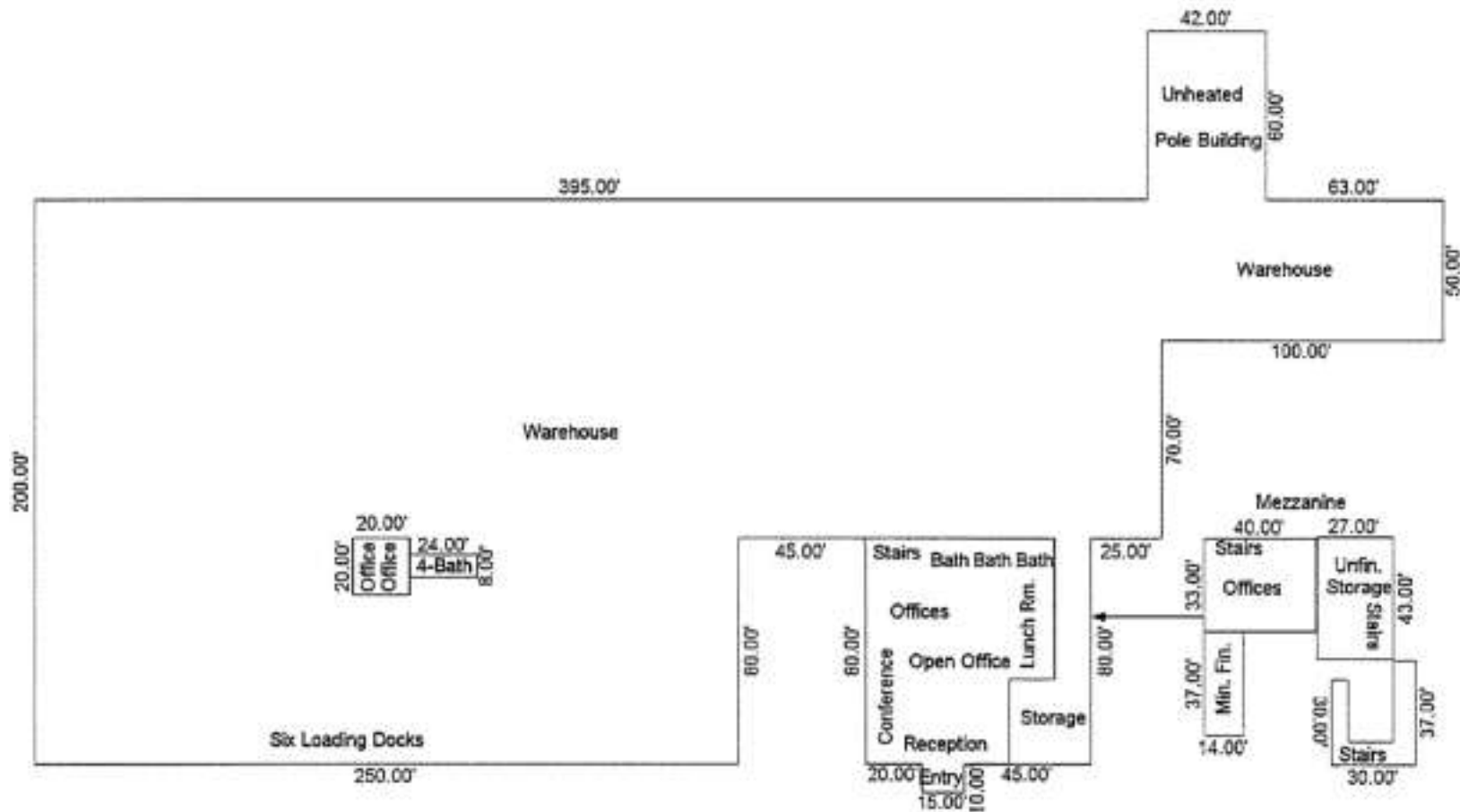


\$2,875,000 (\$35 PSF)



// **55508 STATE HIGHWAY 19**
WINTHROP, MINNESOTA

// FLOOR PLANS



// GALLERY



55508

STATE HIGHWAY 19

WINTHROP, MINNESOTA



CONTACT

TODD HANSON
Senior Director
+1 952 820 8737
todd.hanson@cushwake.com

JASON SELL
Senior Director
+1 952 837 8515
jason.sell@cushwake.com

JORDAN DICK
Director
+1 952 204 7631
jordan.dick@cushwake.com

©2025 Cushman & Wakefield. All rights reserved. The information contained in this communication is strictly confidential. This information has been obtained from sources believed to be reliable but has not been verified. NO WARRANTY OR REPRESENTATION, EXPRESS OR IMPLIED, IS MADE AS TO THE CONDITION OF THE PROPERTY (OR PROPERTIES) REFERENCED HEREIN OR AS TO THE ACCURACY OR COMPLETENESS OF THE INFORMATION CONTAINED HEREIN, AND SAME IS SUBMITTED SUBJECT TO ERRORS, OMISSIONS, CHANGE OF PRICE, RENTAL OR OTHER CONDITIONS, WITHDRAWAL WITHOUT NOTICE, AND TO ANY SPECIAL LISTING CONDITIONS IMPOSED BY THE PROPERTY OWNER(S). ANY PROJECTIONS, OPINIONS OR ESTIMATES ARE SUBJECT TO UNCERTAINTY AND DO NOT SIGNIFY CURRENT OR FUTURE PROPERTY PERFORMANCE.