

±2,961 - 6,296 RSF AVAILABLE FOR LEASE

1560 NORTH ORANGE AVENUE, WINTER PARK

1560 NORTH ORANGE

LOCATED IN WINTER PARK



FOUNDRY
COMMERCIAL



CLASS-A DEVELOPMENT

1560 North Orange has an ideal Winter Park location with convenient access to executive housing and Downtown Orlando. It's prominent location on the corner of Orange Avenue and Orlando Avenue provides numerous dining and retail amenities.

SUITE	RSF
500	6,296
610	2,961

PROPERTY FEATURES

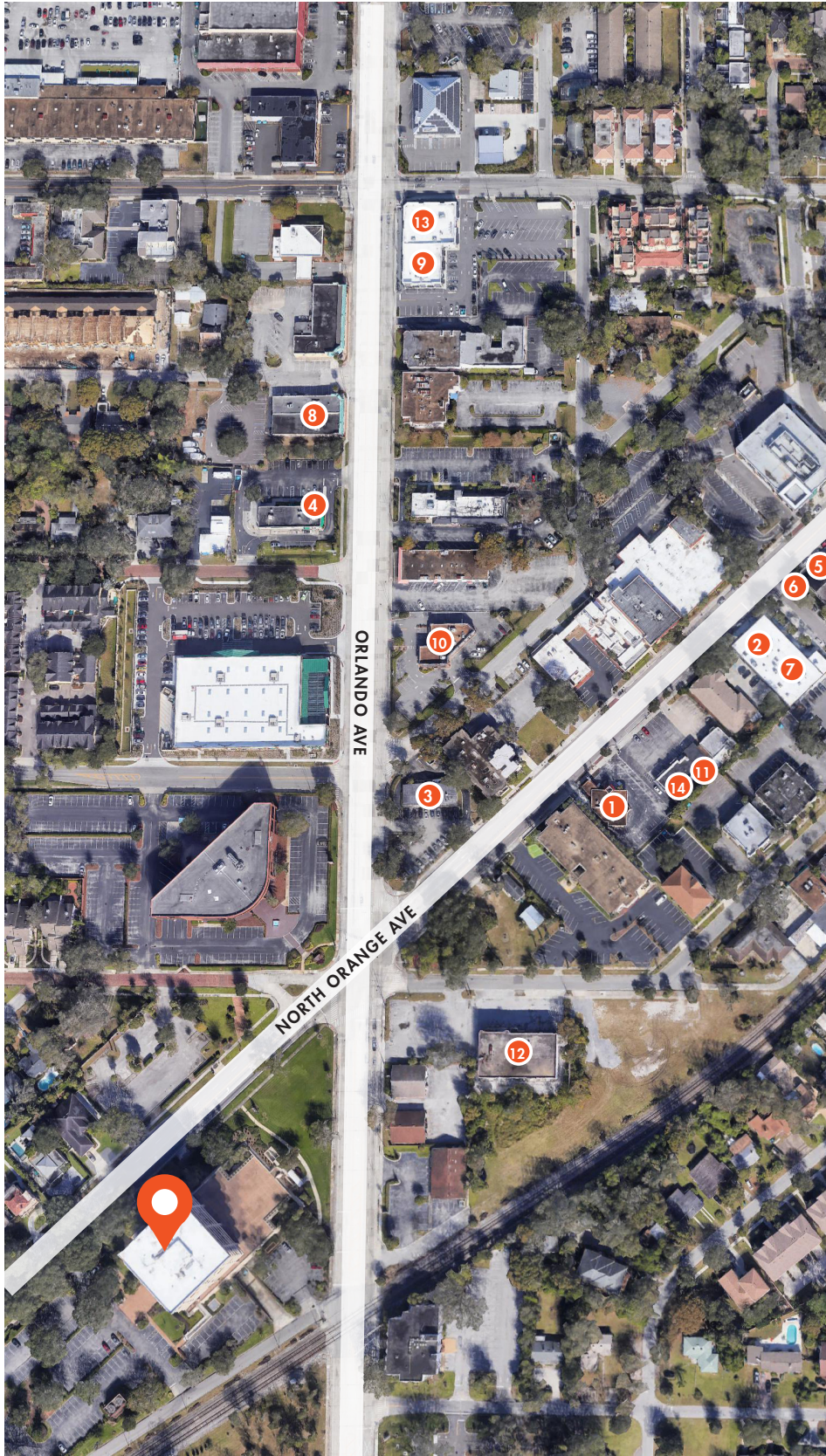
- Prominent 8-story, 102,651 SF building
- Highly desired Winter Park address
- Abundant free parking; 4/1,000 RSF
- On-site storage



FOR MORE INFORMATION, PLEASE CONTACT:

KEVIN WILL | 407.458.5888
Vice President
Kevin.Will@foundrycommercial.com
Licensed Real Estate Broker

NICK HEEB | 772.631.1258
Senior Associate
Nick.Heeb@foundrycommercial.com
Licensed Real Estate Broker



LOCATION

1560 North Orange has an abundance of dining options and retail within a few miles of the property. It's prime Winter Park location brings unique offerings and plenty of options to choose from daily.

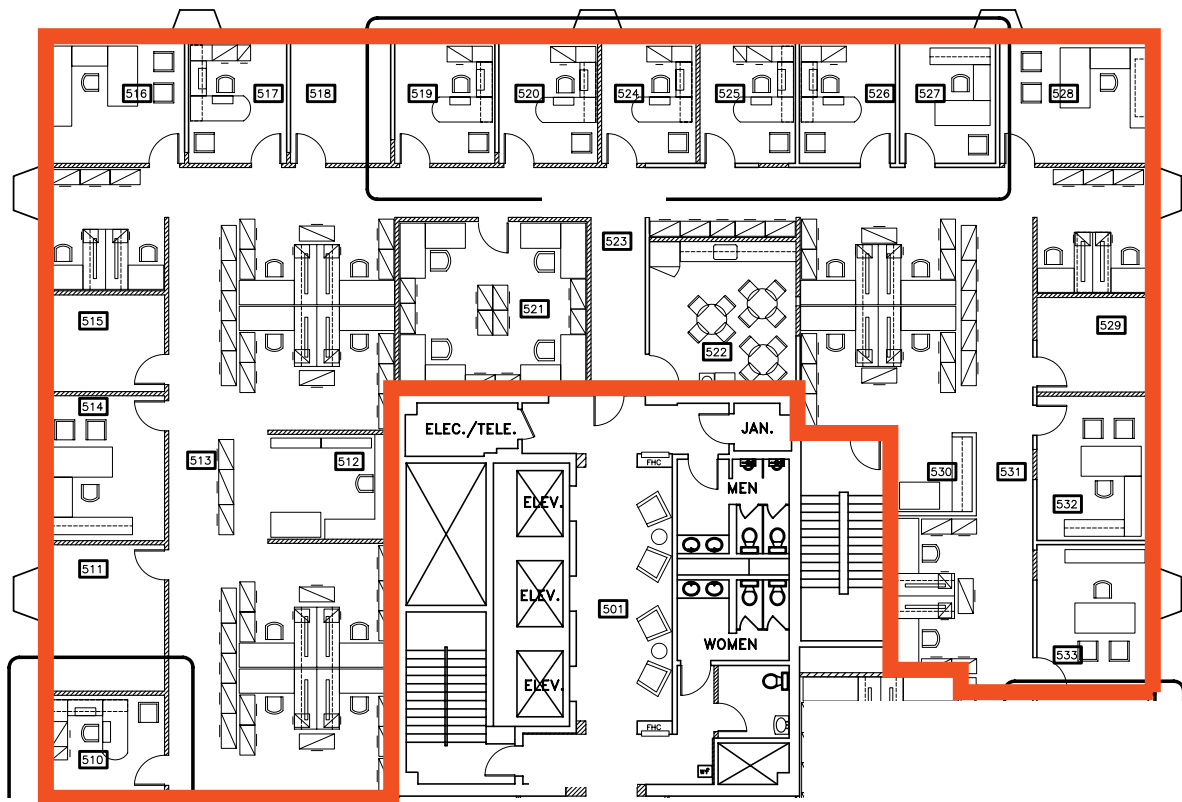
DINING

- 1 Black Bean Deli
- 2 Foxtail Coffee Winter Park
- 3 Einstein Bagels
- 4 Krispy Kreme
- 5 Buttermilk Bakery
- 6 Reel Fish Coastal Kitchen
- 7 Kelly's Homemade Ice Cream
- 8 Moe's Southwest Grill
- 9 Subway
- 10 Jersey Mike's Subs
- 11 Jeff's Bagel Run
- 12 Black Phin Coffee Bar
- 13 Agave Azul
- 14 Jimmy Johns

FIFTH FLOOR

SUITE 500

6,296 SF AVAILABLE





SIXTH FLOOR

SUITE 610

2,961 SF AVAILABLE 6/1/26

