



PROPERTY DESCRIPTION

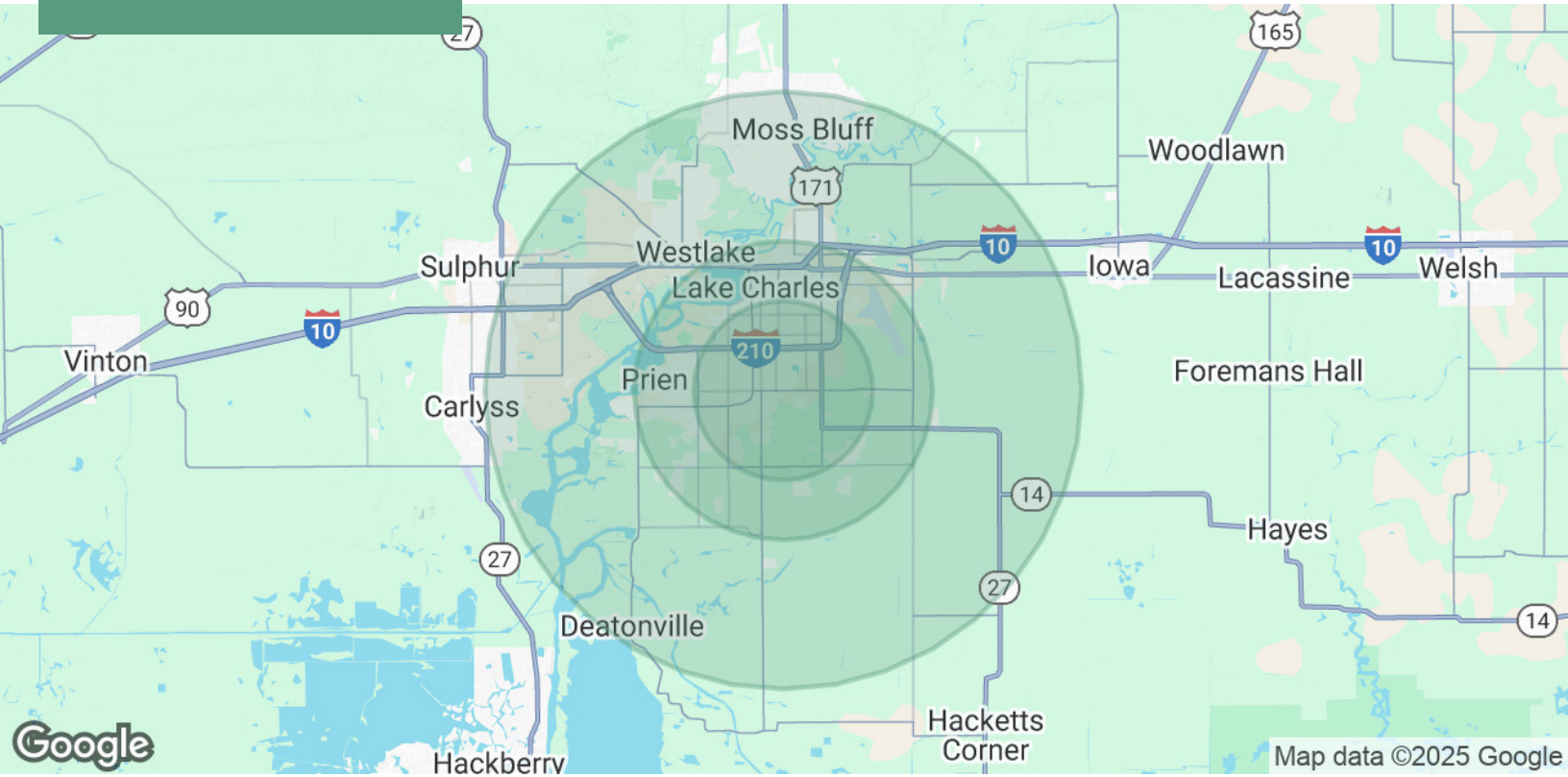
Great development opportunity with unique quality-of-life aspects. South Beach Volleyball and Pickleball complex is Available! 5 minutes from MorganField, this property offers tons of parking and flexible development options. Purchaser could pursue expansion of the sports complex, a multi-family development, and a quick-serve restaurant pad on McNeese Street.

The facility includes 9 sand volleyball courts, 4 pickleball courts, viewing areas, a clubhouse and bar. Additionally, there is +/- 2.8 acres for expansion or development north, and a +/- 15,200 sf outparcel pad on McNeese. With over 20,000 VPD, this east McNeese Street property is a great development opportunity.

OFFERING SUMMARY

Sale Price:	\$2,300,000
Lot Size:	+/- 7.96 Acres
Zoned:	Mixed Use

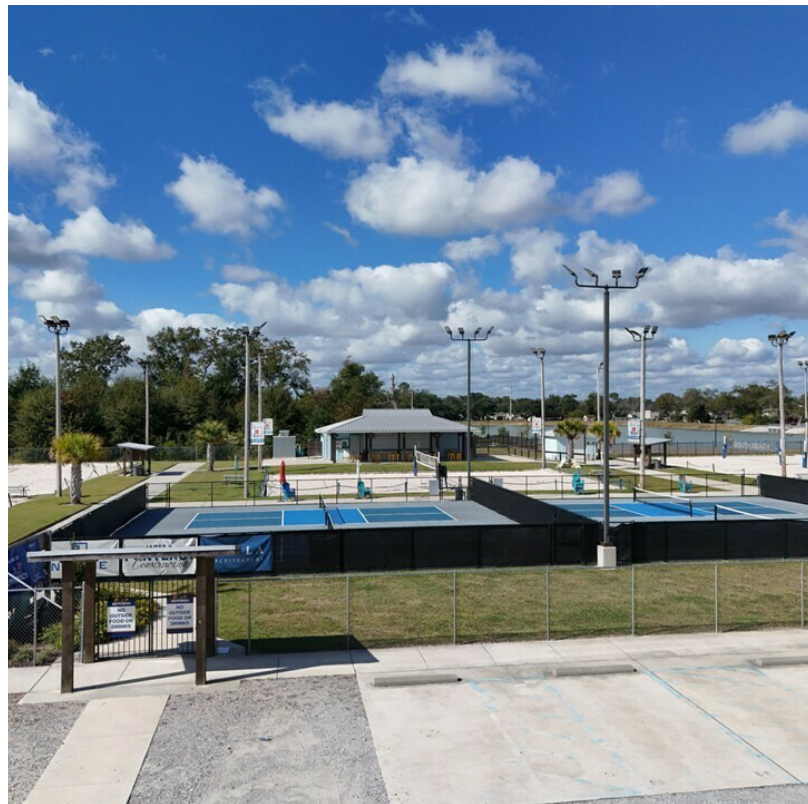
DEMOGRAPHICS	3 MILES	5 MILES	10 MILES
Total Households	21,922	36,407	57,737
Total Population	54,464	91,023	147,354
Average HH Income	\$76,661	\$80,583	\$88,840



POPULATION	3 MILES	5 MILES	10 MILES
Total Population	54,464	91,023	147,354
Average Age	39	39	39
Average Age (Male)	37	38	38
Average Age (Female)	40	40	40
HOUSEHOLDS & INCOME	3 MILES	5 MILES	10 MILES
Total Households	21,922	36,407	57,737
# of Persons per HH	2.5	2.5	2.6
Average HH Income	\$76,661	\$80,583	\$88,840
Average House Value	\$234,175	\$255,750	\$273,104

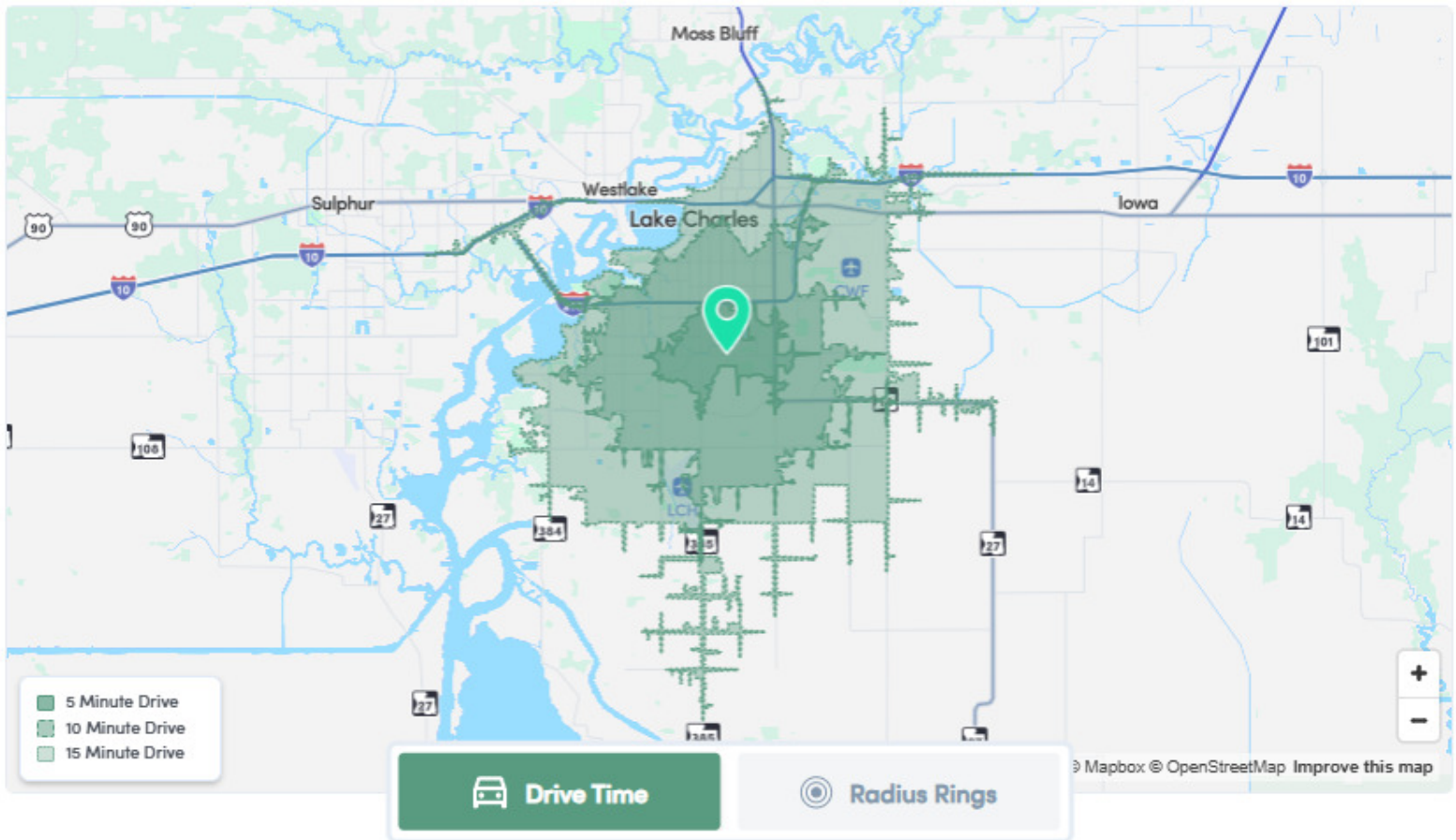
Demographics data derived from AlphaMap













J. HARDTNER KLUMPP, CCIM

Direct: 337.263.2397
hklumpp@nvstrealestate.com

Blake Soto, CCIM

Direct: 337.764.6556
bsoto@nvstrealestate.com

NVST Real Estate Solutions

337.433.0511
500 Kirby Street, Lake Charles, LA 70601
NVSTrealestate.com



Steve Greer

Senior Director Investments
Broker of Record - Louisiana & Arkansas
Direct: 225.329.8385
steve.greer@marcusmillichap.com

Marcus & Millichap

225.376.6729
10527 Kentshire Court, Ste. B
Baton Rouge, LA 70810
MarcusMillichap.com