



OFFICE / WAREHOUSE FOR SALE / LEASE

506 James Street, Brainerd, MN 56401

C|C CLOSE CONVERSE
Commercial Real Estate | Business Brokerage

521 Charles Street, PO Box 327, Brainerd, MN 56401 | 218-828-3334 | www.closeconverse.com

506 James St, Brainerd, MN 56401

Table of Contents

Page

3-5	Features
6	Floor Plan
7-14	Photos
15	Aerial Photo
16	Section Aerial
17	Section Map
18	Zoning Map
19	Traffic Counts
20	Location Map
21-22	Demographics
23	Thank You
24	Agency Disclosure
25	Contact

Close Converse: The above information has been obtained from the property owner or other sources that we deem reliable, however, neither the owner nor Close Converse guarantees the accuracy of such information. No part of this information may be reproduced, adapted, or transmitted without the prior written consent of Close Converse.

521 Charles Street, PO Box 327, Brainerd, MN 56401 | 218-828-3334 | www.closeconverse.com

506 James St, Brainerd, MN 56401

Features

Versatile Office / Warehouse Facility.

Excellent office-warehouse facility for sale or lease in Brainerd, MN! Formerly home to a newspaper print operation, this expansive and versatile property offers a rare combination of office and industrial space just off the high-traffic Washington Street corridor. The front office section features a welcoming reception area, spacious open work zones, 10 private offices, a conference room, and a kitchen/dining area—perfectly suited for a range of professional uses. The impressive warehouse portion includes a large open warehouse with one overhead door, a dedicated receiving room with loading dock access, and a secondary warehouse equipped with four overhead doors, allowing for flexible workflow and logistics. Whether you're looking to expand operations, relocate your business, or invest in a multi-functional property in a central Brainerd location—this property delivers outstanding accessibility, and potential.



Address: 506 James Street, Brainerd, MN 56401

Directions: From Hwy 210/371 intersection in Baxter - East on Hwy 210 (Washington St) approx. 1 1/4 miles - North on NW 5th St - Property is the SE corner of NW 5th St and James St

Lot Size: 1.82 Acres Total (79,805 sq. ft.)
Bldg: 1.18 Acres (51,801 sq. ft.)
Land: 0.64 Acres (28,004 sq. ft.)

Lot Dimensions: Bldg: 140' x 370'
Land: 140' x 200'

Building Size: 27,402 sq. ft. Total
Main Level: 26,338 sq. ft. Total
Office Area: 12,319 sq. ft.
Warehouse Area: 14,019 sq. ft.
Upper Level: 1,064 sq. ft. (264 SF Area & 800 SF Area)

Purchase Price: \$2,950,000

Lease Rate: \$8.00/sq. ft. Triple Net

Continued on next page.

Close Converse: The above information has been obtained from the property owner or other sources that we deem reliable, however, neither the owner nor Close Converse guarantees the accuracy of such information. No part of this information may be reproduced, adapted, or transmitted without the prior written consent of Close Converse.

506 James St, Brainerd, MN 56401

Features

2025 Real Estate Taxes:	\$46,268
Water & Sewer:	City
Heating:	Natural Gas Mini Boilers
Cooling:	Air Handler - Electric Roof-Top Units
Electric:	800 Amp, Three Phase
Lighting:	Fluorescent
Year Built:	1989
Construction:	Poured Concrete
Foundation:	Concrete
Roof:	Flat - Rubber Membrane
Exterior:	Poured Concrete & Stucco
Ceiling Height:	Office Area: 10' Warehouse Area: 16'
Indoor Sprinkling:	Yes
Overhead Doors:	1 (12'H x 12'W) Back Warehouse 3 (12'H x 10'W) Back Warehouse 1 (8'H x 8'W) Front Warehouse 1 (6'W x 8'H) Interior between Warehouses
Loading Dock:	1 (with 8'W x 8'H OH Door)
Bathrooms:	5
Parking:	Bldg: 17 Paved Parking Spaces in Front and 11 Paved Parking Spaces in Back Land: 53 Paved Parking Spaces
Frontage:	Bldg: 140' on James Street and 370' on NW 5th Street Land: 200' on NW 6th Street

Continued on next page.

Close Converse: The above information has been obtained from the property owner or other sources that we deem reliable, however, neither the owner nor Close Converse guarantees the accuracy of such information. No part of this information may be reproduced, adapted, or transmitted without the prior written consent of Close Converse.

521 Charles Street, PO Box 327, Brainerd, MN 56401 | 218-828-3334 | www.closeconverse.com

506 James St, Brainerd, MN 56401

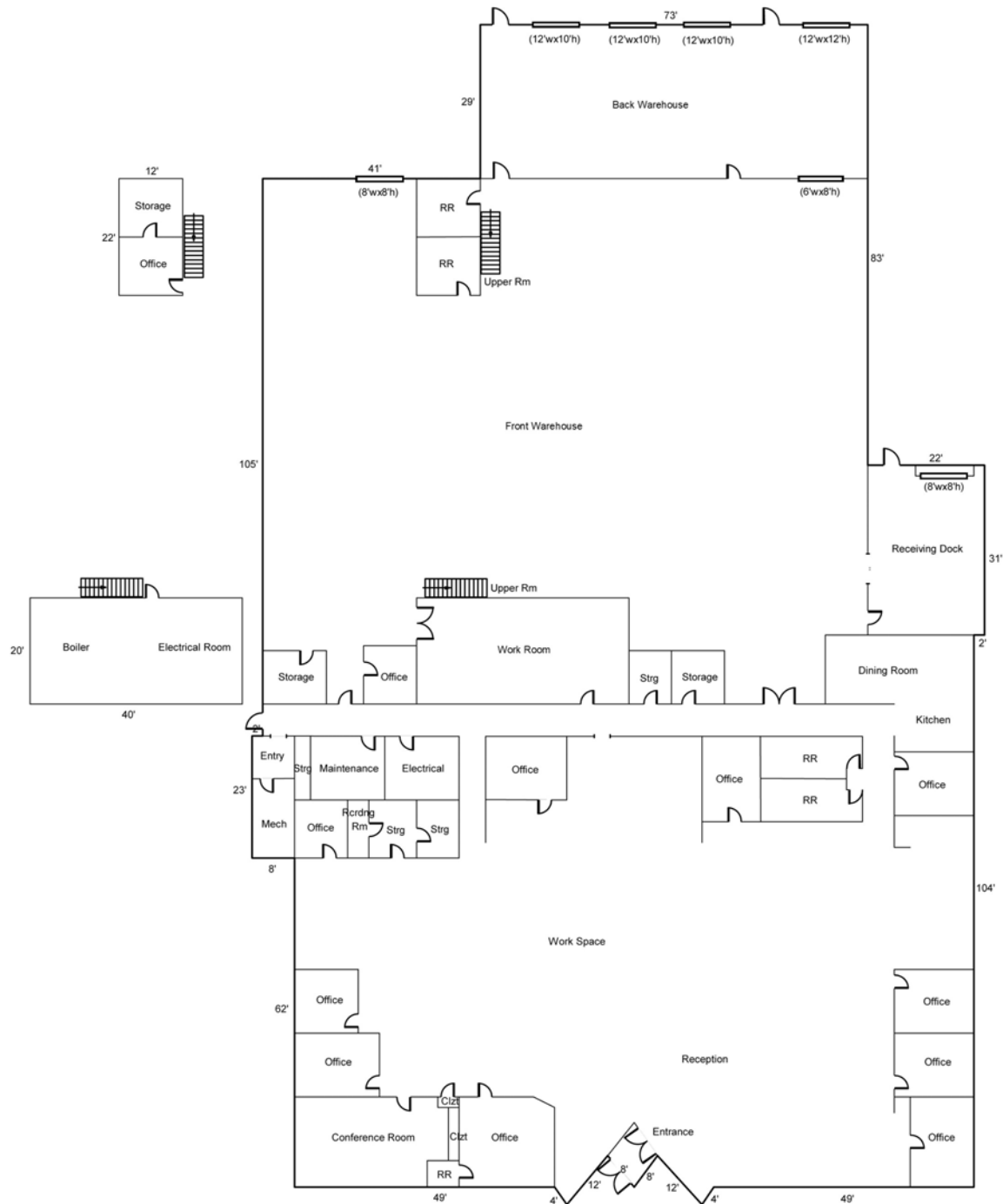
Features

Zoning:	TN-2 - Traditional Neighborhood 2
PID#:	Bldg: 41040790 Land: 41040764
Legal Description:	Bldg: Lots 1 thru 6 inclusive, Block H, and the adjacent S'yly 1/2 of vacated Robert Street, West Brainerd Land: Lots 11 & 12 Block P and then N 20 ft of Lot 7 Block H, the S'yly line of which shall run parallel to and 20 ft from the N'yly line of said Lot 7, and the vacated portion of Robert Street lying between Lot 7 Block H & Lot 12 Block P, & S 30 ft of the N 1/2 of vacated Robert Street adjacent to Lot 1 Block P
Neighboring Businesses:	Located near MADD, Kaiser & Associates PA, Lakes Area Cosmetics Bar, Lake Country Dental, Caribou, Wendy's, Wells Fargo, The UPS Store, Nail Studio, Walgreens, Access North, Parlor Hair Salon, Retirement Designs, US Army Recruiting, Rainbow Therapeutics, Tree of Life Holistic, First Peoples Insurance, Brainerd License Office, VA Clinic, Tanner Motors, McDonalds, Good Year Tire, Dominos, Subway, Westgate Mall, Westport Shopping Center, Dollar Tree, plus numerous others.

Close Converse: The above information has been obtained from the property owner or other sources that we deem reliable, however, neither the owner nor Close Converse guarantees the accuracy of such information. No part of this information may be reproduced, adapted, or transmitted without the prior written consent of Close Converse.

506 James St, Brainerd, MN 56401

Floor Plan



Close Converse: The above information has been obtained from the property owner or other sources that we deem reliable, however, neither the owner nor Close Converse guarantees the accuracy of such information. No part of this information may be reproduced, adapted, or transmitted without the prior written consent of Close Converse.

521 Charles Street, PO Box 327, Brainerd, MN 56401 | 218-828-3334 | www.closeconverse.com

506 James St, Brainerd, MN 56401

Photos



Subject Building



Subject Building



Drive-In Door for Front Warehouse



Drive-In Doors for Back Warehouse



Drive-In Doors for Back Warehouse



Loading Dock for Receiving

Close Converse: The above information has been obtained from the property owner or other sources that we deem reliable, however, neither the owner nor Close Converse guarantees the accuracy of such information. No part of this information may be reproduced, adapted, or transmitted without the prior written consent of Close Converse.

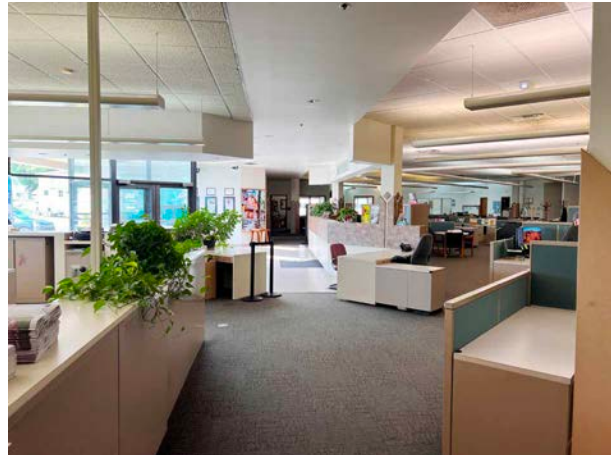
521 Charles Street, PO Box 327, Brainerd, MN 56401 | 218-828-3334 | www.closeconverse.com

506 James St, Brainerd, MN 56401

Photos



Reception



Reception



Reception



Reception



Work Space



Office

Close Converse: The above information has been obtained from the property owner or other sources that we deem reliable, however, neither the owner nor Close Converse guarantees the accuracy of such information. No part of this information may be reproduced, adapted, or transmitted without the prior written consent of Close Converse.

521 Charles Street, PO Box 327, Brainerd, MN 56401 | 218-828-3334 | www.closeconverse.com

506 James St, Brainerd, MN 56401

Photos



Office



Office



Work Space



Work Space



Office



Work Space

Close Converse: The above information has been obtained from the property owner or other sources that we deem reliable, however, neither the owner nor Close Converse guarantees the accuracy of such information. No part of this information may be reproduced, adapted, or transmitted without the prior written consent of Close Converse.

521 Charles Street, PO Box 327, Brainerd, MN 56401 | 218-828-3334 | www.closeconverse.com

506 James St, Brainerd, MN 56401

Photos



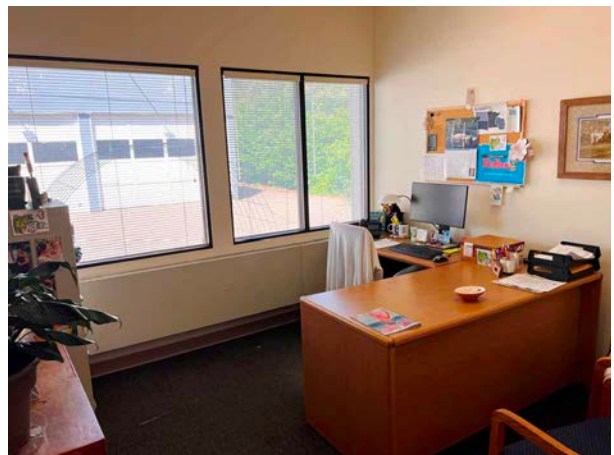
Office



Conference Room



Office



Office



Work Space

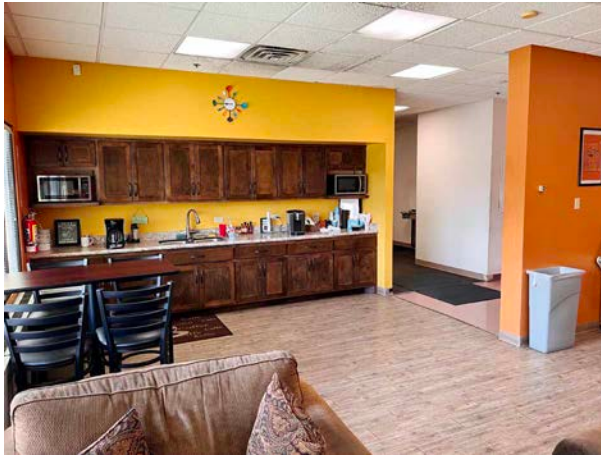


Work Space

Close Converse: The above information has been obtained from the property owner or other sources that we deem reliable, however, neither the owner nor Close Converse guarantees the accuracy of such information. No part of this information may be reproduced, adapted, or transmitted without the prior written consent of Close Converse.

506 James St, Brainerd, MN 56401

Photos



Kitchen / Dining



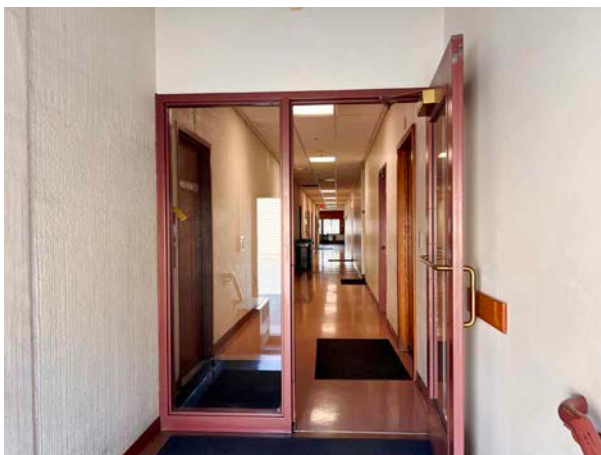
Kitchen / Dining



Kitchen / Dining



Restroom



Employee Entrance on West Side of Building



Maintenance Room

Close Converse: The above information has been obtained from the property owner or other sources that we deem reliable, however, neither the owner nor Close Converse guarantees the accuracy of such information. No part of this information may be reproduced, adapted, or transmitted without the prior written consent of Close Converse.

506 James St, Brainerd, MN 56401

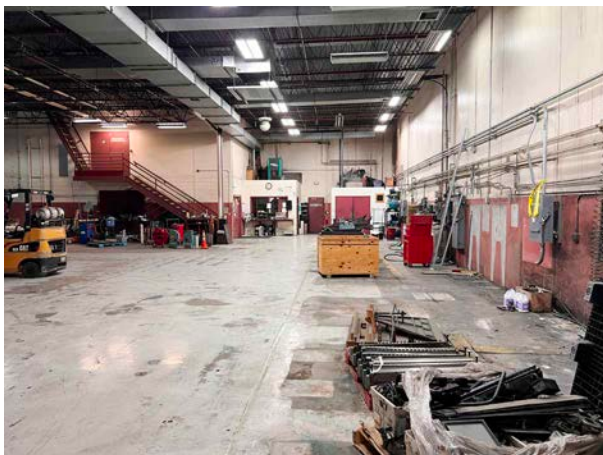
Photos



Front Warehouse Office



Front Warehouse Office



Front Warehouse



Front Warehouse



Front Warehouse Drive-In Door



Front Warehouse

Close Converse: The above information has been obtained from the property owner or other sources that we deem reliable, however, neither the owner nor Close Converse guarantees the accuracy of such information. No part of this information may be reproduced, adapted, or transmitted without the prior written consent of Close Converse.

521 Charles Street, PO Box 327, Brainerd, MN 56401 | 218-828-3334 | www.closeconverse.com

506 James St, Brainerd, MN 56401

Photos



Front Warehouse



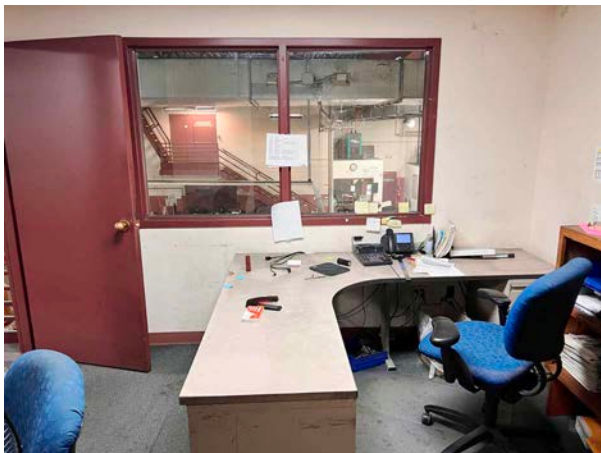
Front Warehouse



Work Room in Front Warehouse



Front Warehouse Upper Level Mechanical



Front Warehouse Upper Level Office



Front Warehouse Upper Level Storage

Close Converse: The above information has been obtained from the property owner or other sources that we deem reliable, however, neither the owner nor Close Converse guarantees the accuracy of such information. No part of this information may be reproduced, adapted, or transmitted without the prior written consent of Close Converse.

506 James St, Brainerd, MN 56401

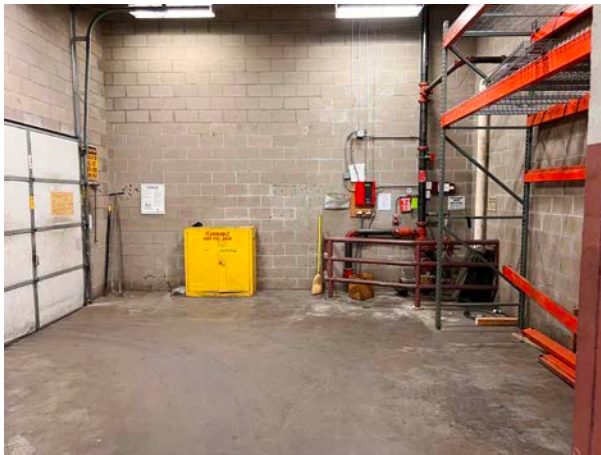
Photos



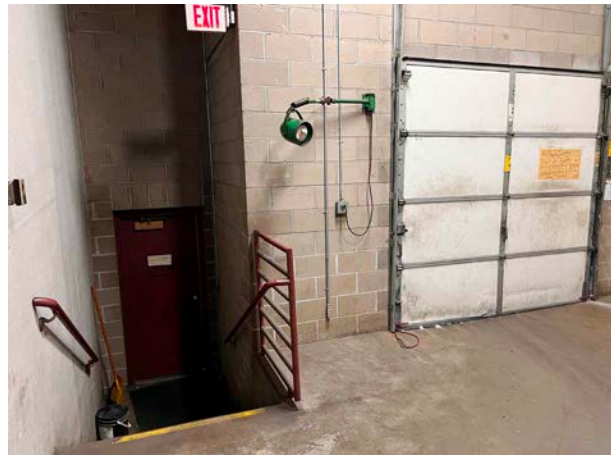
Back Warehouse Drive-In Doors



Back Warehouse



Loading Dock Receiving Area



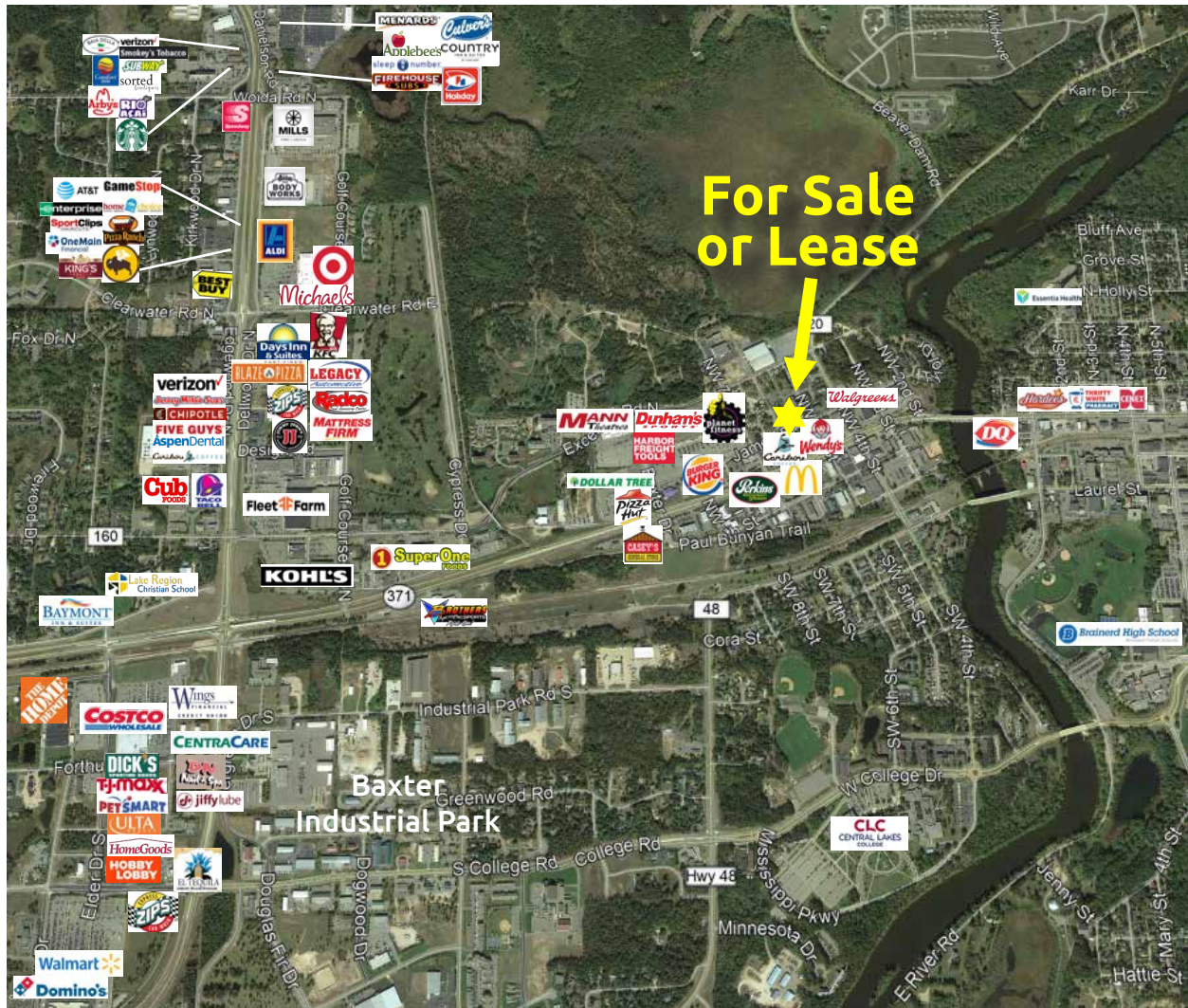
Loading Dock

Close Converse: The above information has been obtained from the property owner or other sources that we deem reliable, however, neither the owner nor Close Converse guarantees the accuracy of such information. No part of this information may be reproduced, adapted, or transmitted without the prior written consent of Close Converse.

521 Charles Street, PO Box 327, Brainerd, MN 56401 | 218-828-3334 | www.closeconverse.com

506 James St, Brainerd, MN 56401

Aerial Photo

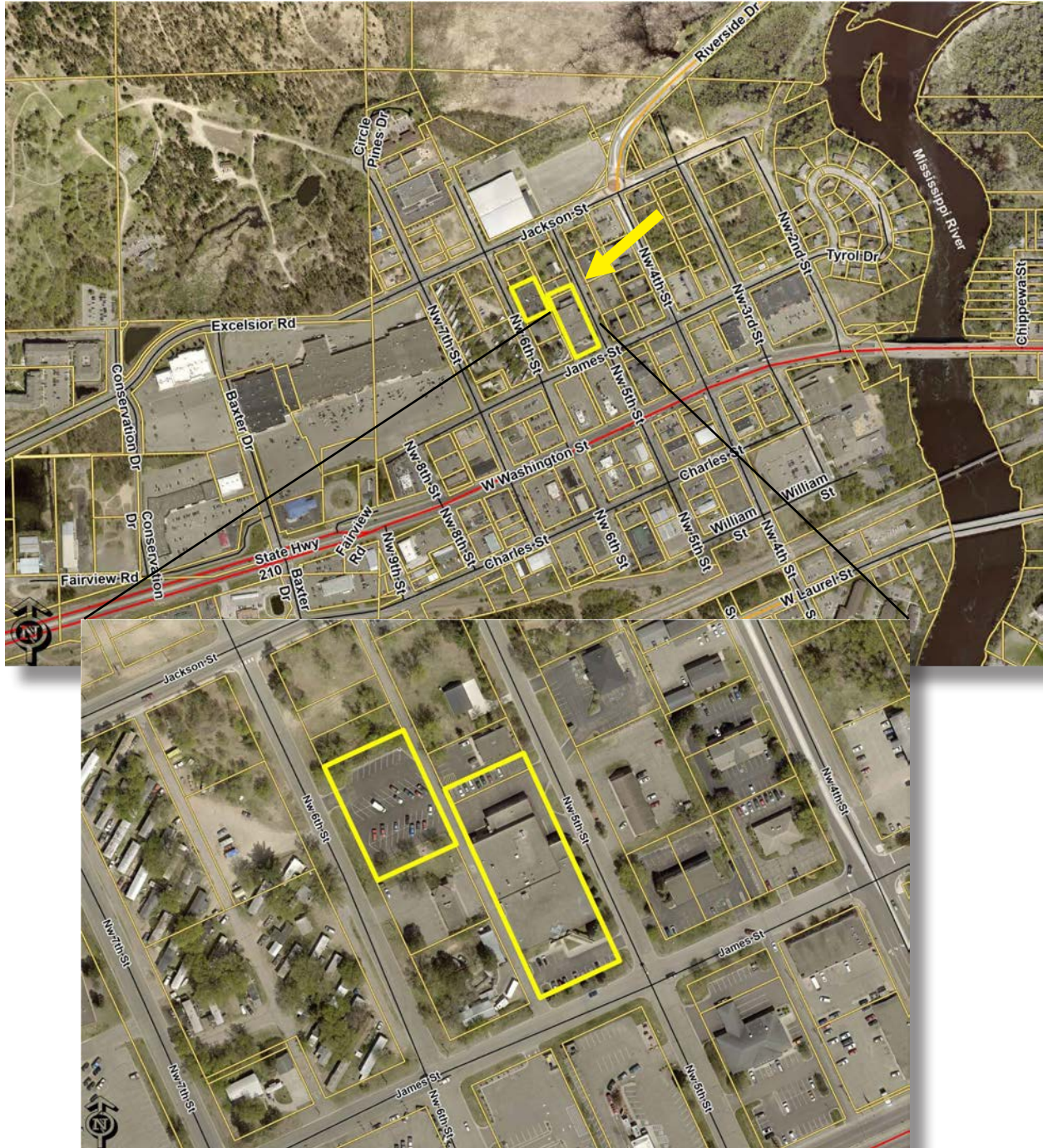


Close Converse: The above information has been obtained from the property owner or other sources that we deem reliable, however, neither the owner nor Close Converse guarantees the accuracy of such information. No part of this information may be reproduced, adapted, or transmitted without the prior written consent of Close Converse.

521 Charles Street, PO Box 327, Brainerd, MN 56401 | 218-828-3334 | www.closeconverse.com

506 James St, Brainerd, MN 56401

Section Aerial



Close Converse: The above information has been obtained from the property owner or other sources that we deem reliable, however, neither the owner nor Close Converse guarantees the accuracy of such information. No part of this information may be reproduced, adapted, or transmitted without the prior written consent of Close Converse.

521 Charles Street, PO Box 327, Brainerd, MN 56401 | 218-828-3334 | www.closeconverse.com

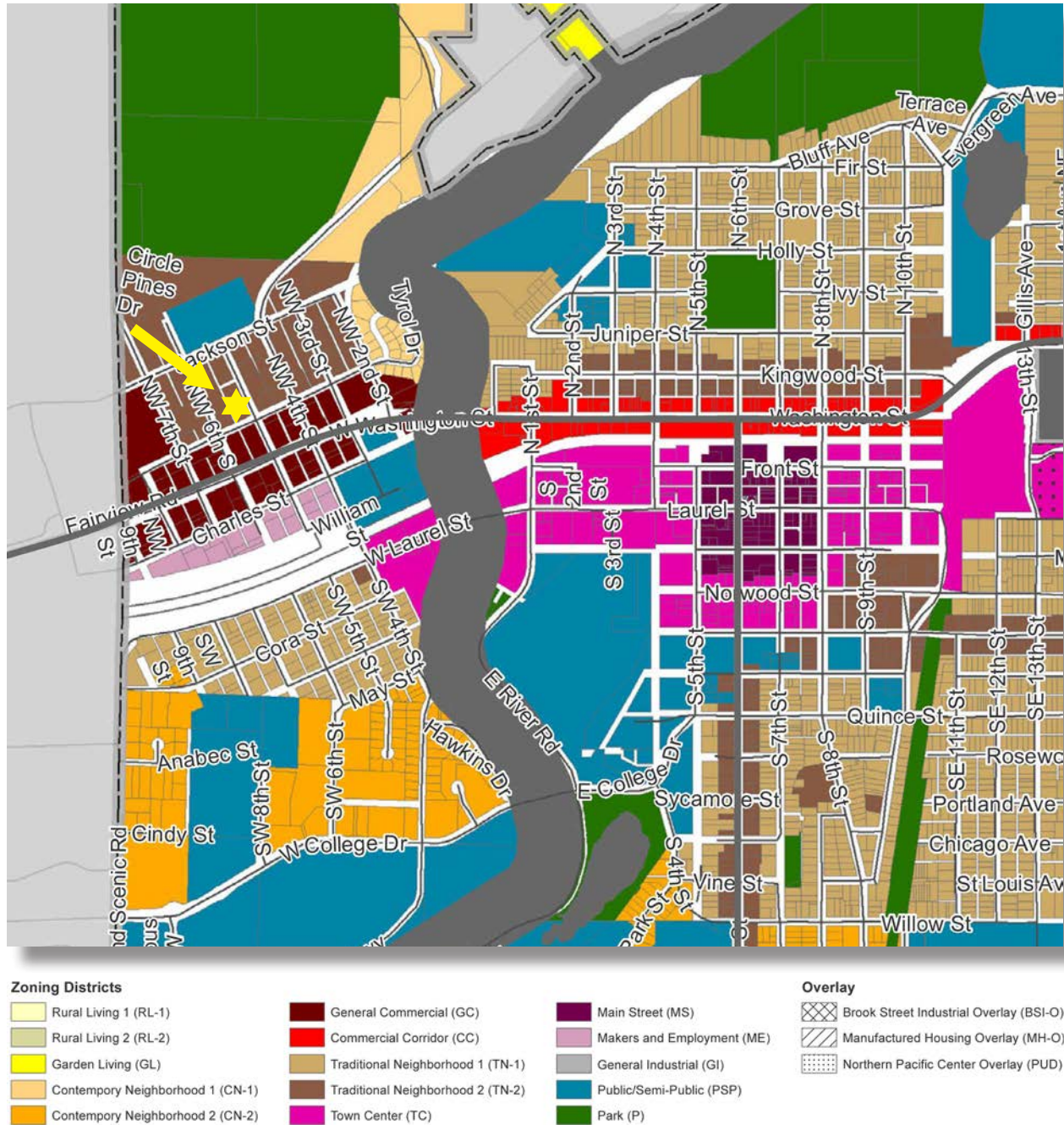


CLOSE CONVERSE
Commercial Real Estate | Business Brokerage

506 James St, Brainerd, MN 56401

Zoning Map

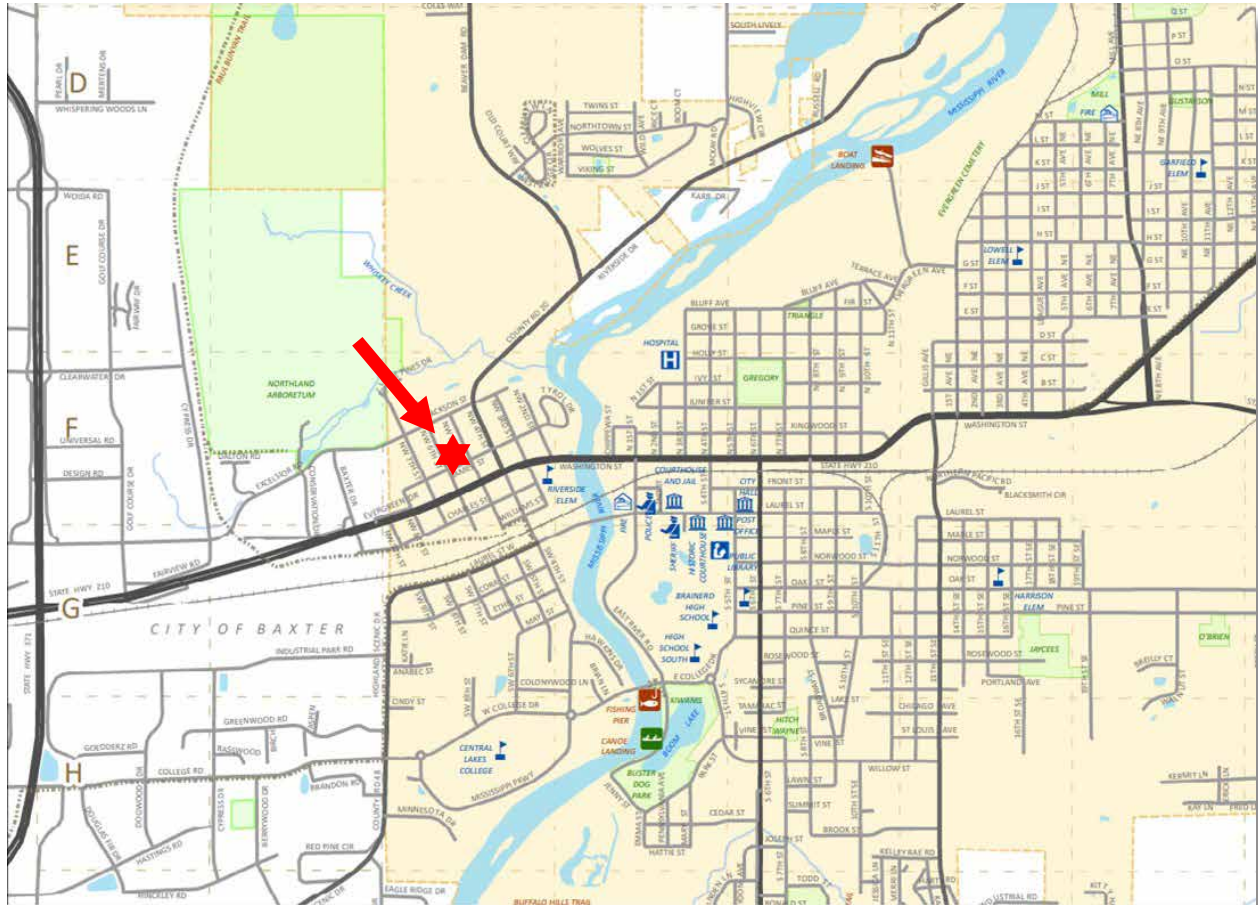
(TN-2) Traditional Neighborhood 2



Close Converse: The above information has been obtained from the property owner or other sources that we deem reliable, however, neither the owner nor Close Converse guarantees the accuracy of such information. No part of this information may be reproduced, adapted, or transmitted without the prior written consent of Close Converse.

506 James St, Brainerd, MN 56401

Location Map



Close Converse: The above information has been obtained from the property owner or other sources that we deem reliable, however, neither the owner nor Close Converse guarantees the accuracy of such information. No part of this information may be reproduced, adapted, or transmitted without the prior written consent of Close Converse.

521 Charles Street, PO Box 327, Brainerd, MN 56401 | 218-828-3334 | www.closeconverse.com



CLOSE CONVERSE
Commercial Real Estate | Business Brokerage

Trade Area 2024 Population (Includes the following counties):

Crow Wing County	68,541
Cass County	31,282
Total Trade Area Population	99,823

2024 Population:

Brainerd	31,866
Baxter	9,043

Estimated Summer Population:

Brainerd/Baxter	200,000+
-----------------	----------

Projected Population Growth Change 2024-2029:

Crow Wing County	0.52%
Brainerd	0.38%
Baxter	1.38%

Households in 2024:

Crow Wing County	29,089
Brainerd	13,109
Baxter	3,643

2024 Median Household Income:

Crow Wing County	\$74,012
Brainerd	\$68,083
Baxter	\$76,101

Leading Employers in Crow Wing County in 2025:

Essentia Health
Cuyuna Regional Medical Center
Brainerd School District
Grandview Lodge
Breezy Point Resort
Ascensus
Clow Stamping
Crow Wing County
Madden's Resort
Cragun's Resort
Walmart
Ruttgers Bay Lake Resort
Cub Foods/Super Valu (3 Stores)
Central lakes College
Anderson Brothers Construction
Pequot Lakes School District
Mills Automotive
Bang Printing
City of Brainerd
Costco
Bethany Good Samaritan
Woodland Good Samaritan
Crosby Ironton School District
Minnesota Care

Leading Employers Cont.:

Landis + Gyr
Northstar Plating
Nortech Systems
Lindar
Avantech
Reichert Bus
Lexington
Growth Zone
CTC
Stern Companies
MNDOT
MNDNR
TDS
Graphic Packaging
Crow Wing Power

Continued on next page.

Demographics

Brainerd Lakes Area Businesses: (To see a list of additional businesses, please go to www.explorebrainerdlakes.com)

Financial Institutions: 16+
(multiple locations not counted)

Churches: 30+
Schools: 15+
Golf Courses: 27+

Resorts:
Birch Bay
Boyd Lodge
Breezy Point Resort
Craguns
Fritz's Resort
Grand View Lodge
Gull Lake Resort
Kavanaugh's
Lost Lake Lodge
Maddens
Manhattan Beach Lodge
Quarterdeck
Ruttger's Bay Lake Lodge
Sullivans
Plus numerous others

Major Retailers:
Aldi
Anytime Fitness
Ashley Furniture
Auto Zone
Best Buy
Brother's Motorsports
Cashwise Liquor (2)
Christmas Point
Costco
Cub Foods (2)
Dick's Sporting Goods
Discount Tire
Dollar Tree (2)
Dollar General
Dondelinger
Dunham's Sports
East Brainerd Mall (17 Retailers)
Family Dollar
Fleet Farm
Harbor Freight
Home Depot
Home Goods
Hobby Lobby
Jiffy Lube

Major Retailers Continued:
Kohl's
Menards
Michaels
PetSmart
Planet Fitness
Super One
Super Wal-Mart
Takedown Gym
Target
The Power Lodge
TJ Maxx
Ulta Beauty
Walgreens
Westgate Mall (27 Retailers)
Westside Liquor

Restaurants/Fast Food:
218 Local
371 Diner
Antler's
Applebee's
Arby's
B-Merri
Baia Della /Prairie Bay
Bar Harbor
Baxter's
Black Bear Lodge & Saloon
Blaze Pizza
Blue Oyster
Boulder Tap House
Breezy Point Marina
Buffalo Wild Wings
Burger King
Burritos California
Caribou Coffee (4)
Char
Chick N Rice
China Garden
Chipotle
Coco Moon
Cold Stone Creamery
Cowboy's
Cragun's Legacy Grill
Cru
Culver's
Dairy Queen (3)
Domino's Pizza (3)
Dough Bros.

Restaurants/Fast Food Continued:
Dunkin Donuts
Dunmire's (2)
El Tequila
Ernie's
Firehouse Subs
Five Guys
Four Seas
Grizzly's Grill & Saloon
Hardee's
Hunt 'N Shack
Ippin Ramen & Sushi
Jack's House
Jersey Mike's
Jimmy John's
KFC
Little Caesar's
Loco Express
Lucky's
Madden's Classic Grill
Manhattan Beach
Maucieri's
McDonalds (2)
Moonlite Bay
Nautical Bowls
Papa Murphy's Pizza
Perkins
Pine Peaks
Pizza Hut
Pizza Ranch
Poncho & Lefty's
Rafferty's Pizza (4)
Riverside Inn
Ruttger's
Sakura
Senor Patron
Sherwood North
Slice on Oak
Starbucks (3)
Subway (4)
Sunshine's Summer House
Taco Bell
Taco John's
The Barn
The Commander
The Pines at Grandview
Wendy's (2)
Ye Ole Wharf
Zorbaz (2)

Close Converse: The above information has been obtained from the property owner or other sources that we deem reliable, however, neither the owner nor Close Converse guarantees the accuracy of such information. No part of this information may be reproduced, adapted, or transmitted without the prior written consent of Close Converse.

506 James St, Brainerd, MN 56401

Thank You

Thank you for considering this Close - Converse opportunity

Close - Converse is pleased to present this real estate opportunity for your review. It is our intention to provide you with the breadth of information and data that will allow you to make an informed decision.

We are here to help

Please review this package and contact us with any questions you may have. We are prepared to discuss how this property meets your needs and desires. Facts, figures and background information will aid in your decision. Should you need specialized counsel in the areas of taxation, law, finance, or other areas of professional expertise, we will be happy to work with your advisor or, we can recommend competent professionals.

How to acquire this opportunity

When you have made a decision to move forward, we can help structure a proposal that covers all the complexities of a commercial real estate transaction. As seller's representatives, we know the seller's specific needs and can tailor a proposal that expresses your desires, provides appropriate contingencies for due diligence and results in a win-win transaction for all parties.

Agency and you

Generally, we are retained by sellers or landlords to represent them in the packaging and marketing of their commercial, investment or development real estate. You are encouraged to review the Minnesota disclosure form "Agency Relationships in Real Estate Transactions" which is enclosed at the end of this package. If you have questions about agency and how it relates to your search for the right property, please ask us. We will answer all your questions and review the alternatives.

Should you wish to pursue this opportunity, please acknowledge your review of "Agency Relationships" by signing, dating and returning it to us.

Close Converse: The above information has been obtained from the property owner or other sources that we deem reliable, however, neither the owner nor Close Converse guarantees the accuracy of such information. No part of this information may be reproduced, adapted, or transmitted without the prior written consent of Close Converse.

521 Charles Street, PO Box 327, Brainerd, MN 56401 | 218-828-3334 | www.closeconverse.com

Agency Disclosure

AGENCY RELATIONSHIPS IN REAL ESTATE TRANSACTIONS

1. Page 1

2. **MINNESOTA LAW REQUIRES** that early in any relationship, real estate brokers or salespersons discuss with
3. consumers what type of agency representation or relationship they desire.⁽¹⁾ The available options are listed below. This
4. is not a contract. **This is an agency disclosure form only. If you desire representation you must enter into a**
5. **written contract, according to state law** (a listing contract or a buyer/tenant representation contract). Until such time
6. as you choose to enter into a written contract for representation, you will be treated as a customer and will not receive
7. any representation from the broker or salesperson. The broker or salesperson will be acting as a Facilitator (see
8. paragraph IV on page two (2)), unless the broker or salesperson is representing another party, as described below.

9. **ACKNOWLEDGMENT: I/We acknowledge that I/we have been presented with the below-described options.**
10. **I/We understand that until I/we have signed a representation contract, I/we am/are not represented by the**
11. **broker/salesperson. I/We understand that written consent is required for a dual agency relationship.**

12. **THIS IS A DISCLOSURE ONLY, NOT A CONTRACT FOR REPRESENTATION.**

13. _____
(Signature) (Date) (Signature) (Date)

14. I. **Seller's/Landlord's Broker:** A broker who lists a property, or a salesperson who is licensed to the listing broker,
15. represents the Seller/Landlord and acts on behalf of the Seller/Landlord. A Seller's/Landlord's broker owes to
16. the Seller/Landlord the fiduciary duties described on page two (2).⁽²⁾ The broker must also disclose to the Buyer
17. material facts as defined in MN Statute 82.68, Subd. 3, of which the broker is aware that could adversely and
18. significantly affect the Buyer's use or enjoyment of the property. (MN Statute 82.68, Subd. 3 does not apply to
19. rental/lease transactions.) If a broker or salesperson working with a Buyer/Tenant as a customer is representing the
20. Seller/Landlord, he or she must act in the Seller's/Landlord's best interest and must tell the Seller/Landlord any
21. information disclosed to him or her, except confidential information acquired in a facilitator relationship (see paragraph
22. IV on page two (2)). In that case, the Buyer/Tenant will not be represented and will not receive advice and counsel
23. from the broker or salesperson.

24. II. **Buyer's/Tenant's Broker:** A Buyer/Tenant may enter into an agreement for the broker or salesperson to represent
25. and act on behalf of the Buyer/Tenant. The broker may represent the Buyer/Tenant only, and not the Seller/Landlord,
26. even if he or she is being paid in whole or in part by the Seller/Landlord. A Buyer's/Tenant's broker owes to the
27. Buyer/Tenant the fiduciary duties described on page two (2).⁽²⁾ The broker must disclose to the Buyer material facts
28. as defined in MN Statute 82.68, Subd. 3, of which the broker is aware that could adversely and significantly affect
29. the Buyer's use or enjoyment of the property. (MN Statute 82.68, Subd. 3 does not apply to rental/lease transactions.)
30. If a broker or salesperson working with a Seller/Landlord as a customer is representing the Buyer/Tenant, he or
31. she must act in the Buyer's/Tenant's best interest and must tell the Buyer/Tenant any information disclosed to him
32. or her, except confidential information acquired in a facilitator relationship (see paragraph IV on page two (2)).
33. In that case, the Seller/Landlord will not be represented and will not receive advice and counsel from the broker or
34. salesperson.

35. III. **Dual Agency - Broker Representing both Seller/Landlord and Buyer/Tenant:** Dual agency occurs when one
36. broker or salesperson represents both parties to a transaction, or when two salespersons licensed to the same
37. broker each represent a party to the transaction. Dual agency requires the informed consent of all parties, and
38. means that the broker and salesperson owe the same duties to the Seller/Landlord and the Buyer/Tenant. This
39. role limits the level of representation the broker and salesperson can provide, and prohibits them from acting
40. exclusively for either party. In a dual agency, confidential information about price, terms and motivation for pursuing
41. a transaction will be kept confidential unless one party instructs the broker or salesperson in writing to disclose
42. specific information about him or her. Other information will be shared. Dual agents may not advocate for one party
43. to the detriment of the other.⁽³⁾

44. Within the limitations described above, dual agents owe to both Seller/Landlord and Buyer/Tenant the fiduciary
45. duties described below.⁽⁴⁾ Dual agents must disclose to Buyers material facts as defined in MN Statute 82.68, Subd.
46. 3, of which the broker is aware that could adversely and significantly affect the Buyer's use or enjoyment of the
47. property. (MN Statute 82.68, Subd. 3 does not apply to rental/lease transactions.)

48. _____ I have had the opportunity to review the "Notice Regarding Predatory Offender Information" on
(initials) (initials)
49. page two. (2)

50. Page 2

51. IV. **Facilitator:** A broker or salesperson who performs services for a Buyer/Tenant, a Seller/Landlord or both but
52. does not represent either in a fiduciary capacity as a Buyer's/Tenant's Broker, Seller's/Landlord's Broker or Dual
53. Agent. **THE FACILITATOR BROKER OR SALESPERSON DOES NOT OWE ANY PARTY ANY OF THE FIDUCIARY**
54. **DUTIES LISTED BELOW, EXCEPT CONFIDENTIALITY, UNLESS THOSE DUTIES ARE INCLUDED IN A**
55. **WRITTEN FACILITATOR SERVICES AGREEMENT.** The facilitator broker or salesperson owes the duty of
56. confidentiality to the party but owes no other duty to the party except those duties required by law or contained in
57. a written facilitator services agreement, if any. In the event a facilitator broker or salesperson working with a Buyer/
58. Tenant shows a property listed by the facilitator broker or salesperson, then the facilitator broker or salesperson
59. must act as a Seller's/Landlord's Broker (see paragraph I on page one (1)). In the event a facilitator broker or
60. salesperson, working with a Seller/Landlord, accepts a showing of the property by a Buyer/Tenant being represented
61. by the facilitator broker or salesperson, then the facilitator broker or salesperson must act as a Buyer's/Tenant's
62. Broker (see paragraph III on page one (1)).

63. ⁽¹⁾ This disclosure is required by law in any transaction involving property occupied or intended to be occupied by
64. one to four families as their residence.

65. ⁽²⁾ The fiduciary duties mentioned above are listed below and have the following meanings:

66. **Loyalty** - broker/salesperson will act only in client(s)' best interest.
67. **Obedience** - broker/salesperson will carry out all client(s)' lawful instructions.
68. **Disclosure** - broker/salesperson will disclose to client(s) all material facts of which broker/salesperson has knowledge
69. which might reasonably affect the client(s)' use and enjoyment of the property.
70. **Confidentiality** - broker/salesperson will keep client(s)' confidences unless required by law to disclose specific
71. information (such as disclosure of material facts to Buyers).
72. **Reasonable Care** - broker/salesperson will use reasonable care in performing duties as an agent.
73. **Accounting** - broker/salesperson will account to client(s) for all client(s)' money and property received as agent.

74. ⁽³⁾ If Seller(s)/Landlord(s) elect(s) not to agree to a dual agency relationship, Seller(s)/Landlord(s) may give up the
75. opportunity to sell/lease the property to Buyer(s)/Tenant(s) represented by the broker/salesperson. If Buyer(s)/
76. Tenant(s) elect(s) not to agree to a dual agency relationship, Buyer(s)/Tenant(s) may give up the opportunity to
77. purchase/lease properties listed by the broker.

78. **NOTICE REGARDING PREDATORY OFFENDER INFORMATION:** Information regarding the predatory offender
79. registry and persons registered with the predatory offender registry under MN Statute 243.166 may be
80. obtained by contacting the local law enforcement offices in the community where the property is located,
81. or the Minnesota Department of Corrections at (651) 361-7200, or from the Department of Corrections Web site at
82. www.corr.state.mn.us.

MN-AGCYDISC-2 (8/14)

Close Converse: The above information has been obtained from the property owner or other sources that we deem reliable, however, neither the owner nor Close Converse guarantees the accuracy of such information. No part of this information may be reproduced, adapted, or transmitted without the prior written consent of Close Converse.

506 James St, Brainerd, MN 56401

Contact

Office Location

521 Charles Street
Suite 201
Brainerd, MN 56401

Mailing Address

PO Box 327
Brainerd, MN 56401

Phone

218-828-3334

Fax

218-828-4330

Website

www.CloseConverse.com

Agents

Chris Close, CCIM

C: 218-831-7510

chris@closeconverse.com

Nate Grotzke, CCIM

C: 218-838-1000

nate@closeconverse.com

Tim Miller, CCIM

C: 218-838-8772

tim@closeconverse.com

Close Converse: The above information has been obtained from the property owner or other sources that we deem reliable, however, neither the owner nor Close Converse guarantees the accuracy of such information. No part of this information may be reproduced, adapted, or transmitted without the prior written consent of Close Converse.

521 Charles Street, PO Box 327, Brainerd, MN 56401 | 218-828-3334 | www.closeconverse.com