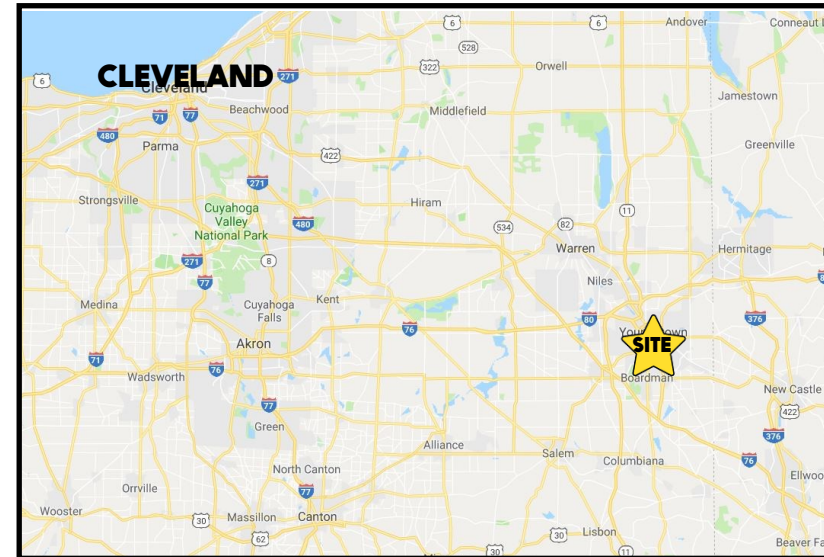


LOCATION

3960 South Ave, Boardman, OH 44512



HIGHLIGHTS

- 4,000 SF on 1.5 acres
- Former bank with 4 drive-thru lanes
- Just south of Midlothian Blvd
- Built in 2004
- Very bright with lots of natural light

TRAFFIC

South Ave = 8,539 VPD

CONTACT

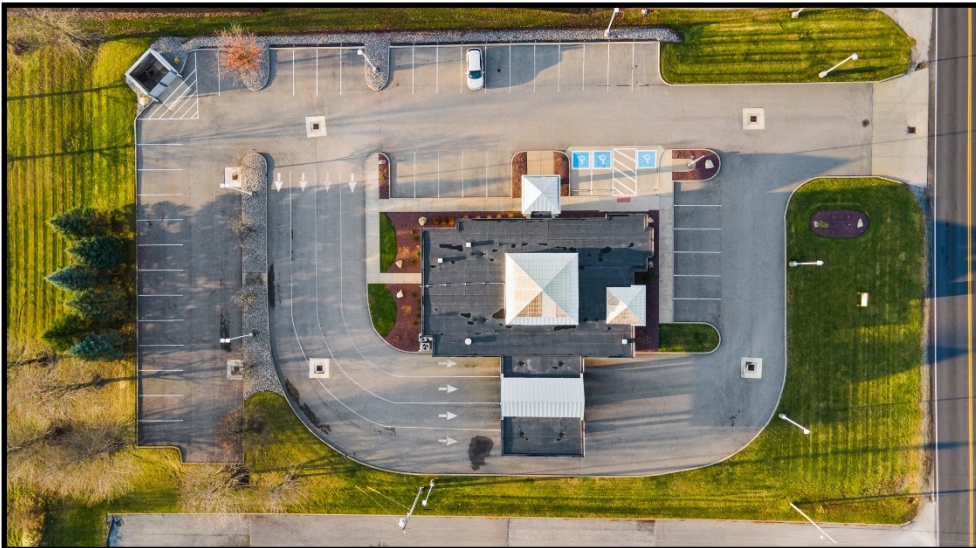
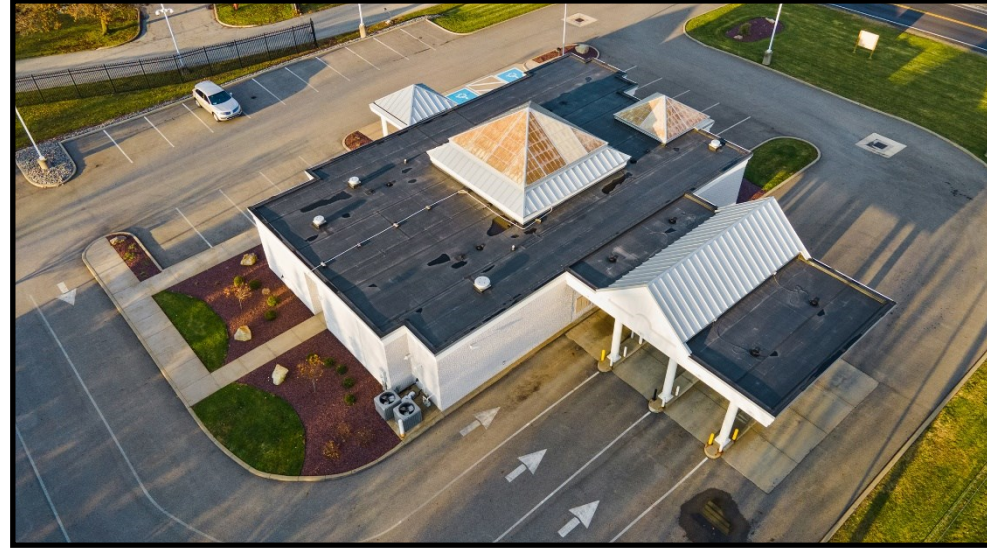
BILL KUTLICK

330.565.5701

bkutlick@platzrealtygroup.com

Office: 330.757.4889 | Fax: 330.294.5622 | 3830 Starr Centre, Suite 2, Canfield, OH 44406

www.PLATZREALTYGROUP.com



Office: 330.757.4889 | Fax: 330.294.5622 | 3830 Starr Centre, Suite 2, Canfield, OH 44406

www.PLATZREALTYGROUP.com

The information presented was obtained from sources believed to be true and reliable. The Platz Realty Group makes no warranties or guarantees to the accuracy of the information.



Office: 330.757.4889 | Fax: 330.294.5622 | 3830 Starr Centre, Suite 2, Canfield, OH 44406

www.PLATZREALTYGROUP.com

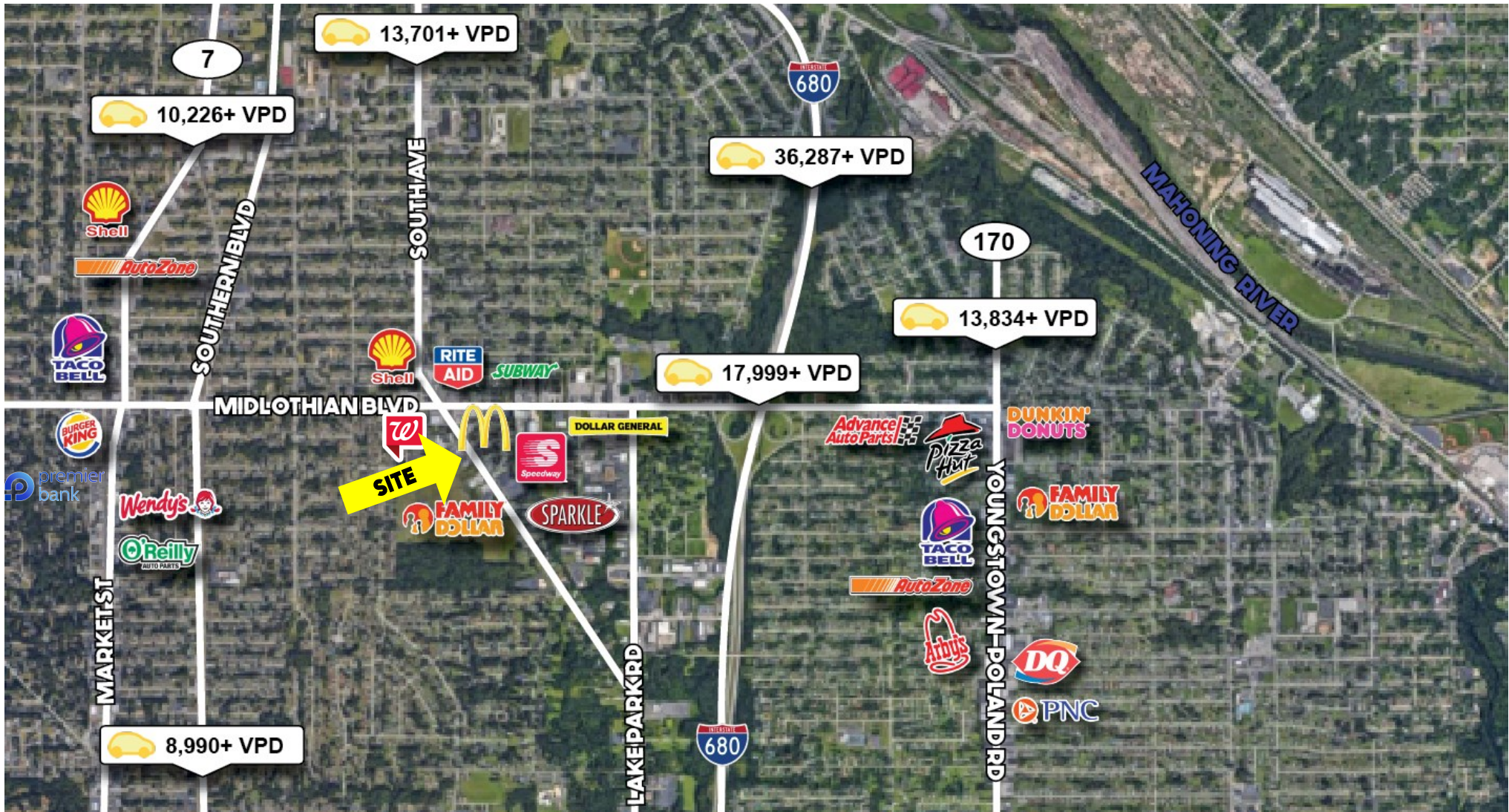
The information presented was obtained from sources believed to be true and reliable. The Platz Realty Group makes no warranties or guarantees to the accuracy of the information.



Office: 330.757.4889 | Fax: 330.294.5622 | 3830 Starr Centre, Suite 2, Canfield, OH 44406

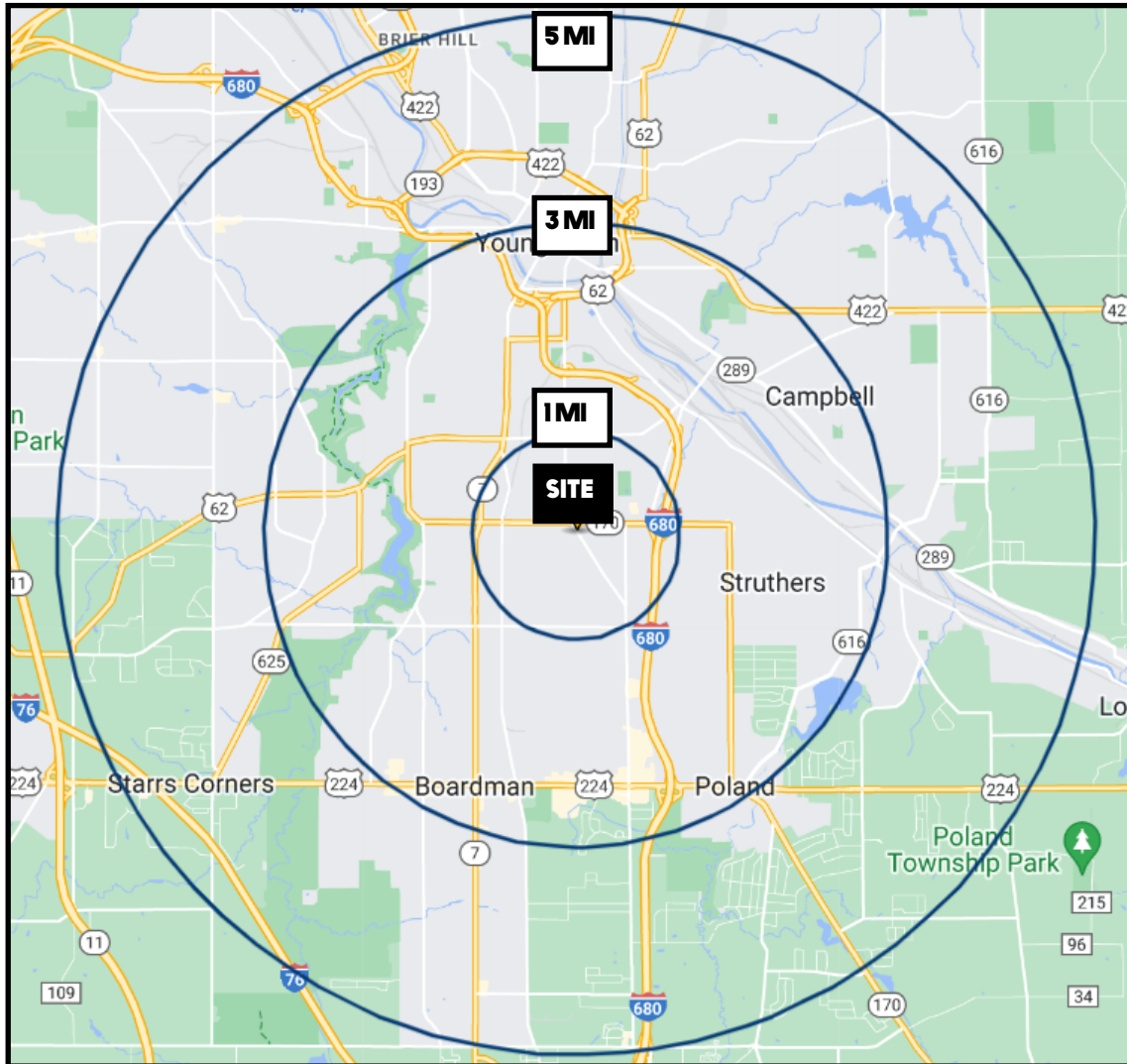
www.PLATZREALTYGROUP.com

The information presented was obtained from sources believed to be true and reliable. The Platz Realty Group makes no warranties or guarantees to the accuracy of the information.



Office: 330.757.4889 | Fax: 330.294.5622 | 3830 Starr Centre, Suite 2, Canfield, OH 44406

www.PLATZREALTYGROUP.com



DEMOGRAPHICS	1 MI	3 MI	5 MI
POPULATION	10,508	67,463	143,668
HOUSEHOLDS	4,222	28,286	59,080
MEDIAN AGE	38	42	42
AVERAGE HH INCOME	\$46,428	\$53,157	\$59,067

SITE INFORMATION	
LOCATION	Boardman Township Mahoning County
PARCEL	29-011-0-002.02
ZONING	Commercial
YEAR BUILT	2004
SIZE	4,000 SF on 1.5 acres
REAL ESTATE TAXES	\$9,401/year
RENT	\$10.00/SF NNN
PRICE	\$750,000 REDUCED \$640,000

Office: 330.757.4889 | Fax: 330.294.5622 | 3830 Starr Centre, Suite 2, Canfield, OH 44406