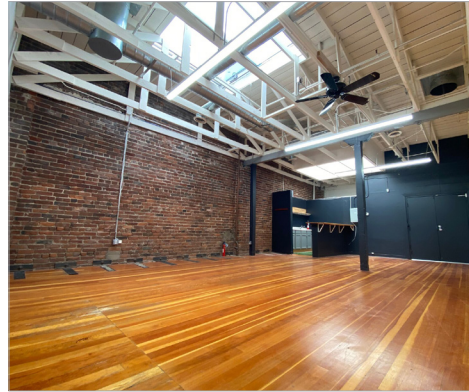
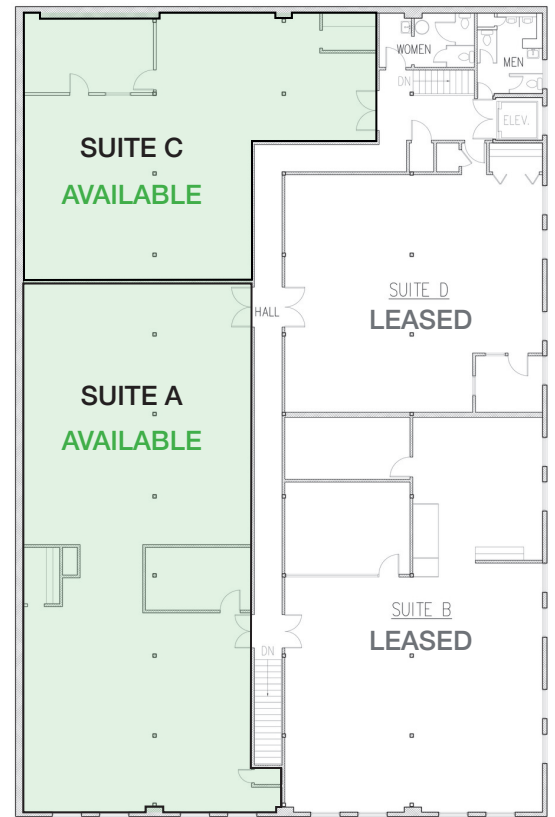


FOR LEASE OFFICE SPACES | \$1.50 MG PSF

230-236 8th Street, San Francisco, CA 94103



2nd Level Floor Plan



PROPERTY DETAILS

- Available Now!
- Located in the heart of SOMA
- Building Size: $\pm 19,520$ sq.ft.
- Available Spaces:
 - Ground Floor Suite E: $\pm 7,235$ SF
 - 2nd Floor Suite A: $\pm 3,291$ SF
 - 2nd Floor Suite C: $\pm 1,952$ SF
- Exposed ceilings and Sky Lights
- Stories: 2
- Zoning: [WMUG \(WSoma Mixed Use General\)](#)
- Easy Freeway Access to 101 and I-80
- A Walker's & Rider's Paradise (99 Walk Score / 100 Transit Score)



Zoning Info

CONTACT FOR MORE DETAILS



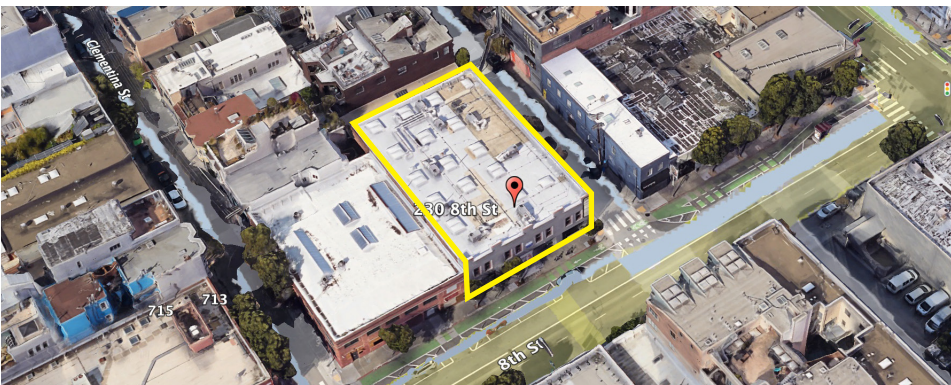
Andrew Peceimer

Senior Commercial Real Estate Advisor
DRE #00993289
(650) 344-4300
apeceimer@cbcburlingame.com



Garrett Swartz

Commercial Real Estate Advisor
DRE #02178894
(650) 352-3302
gswartz@cbcburlingame.com



**COLDWELL BANKER
COMMERCIAL**
WESTBAY REAL ESTATE
GROUP

1575 Bayshore Highway, Suite 100, Burlingame, CA 94010
650-344-4300 | CB CBurlingame.com

©2024 Coldwell Banker Real Estate LLC, dba Coldwell Banker Commercial Westbay Real Estate Group. All rights reserved. Coldwell Banker Commercial® and the Coldwell Banker Commercial logo are registered service marks owned by Coldwell Banker Real Estate LLC. Coldwell Banker Real Estate LLC, dba Coldwell Banker Commercial Affiliates fully supports the principal of the Fair Housing Act and the Equal Opportunity Act. Each office is independently owned and operated. The information provided is deemed reliable, but it is not guaranteed to be accurate or complete, and it should not be relied upon as such. This information should be independently verified before any person enters into a transaction based upon it.