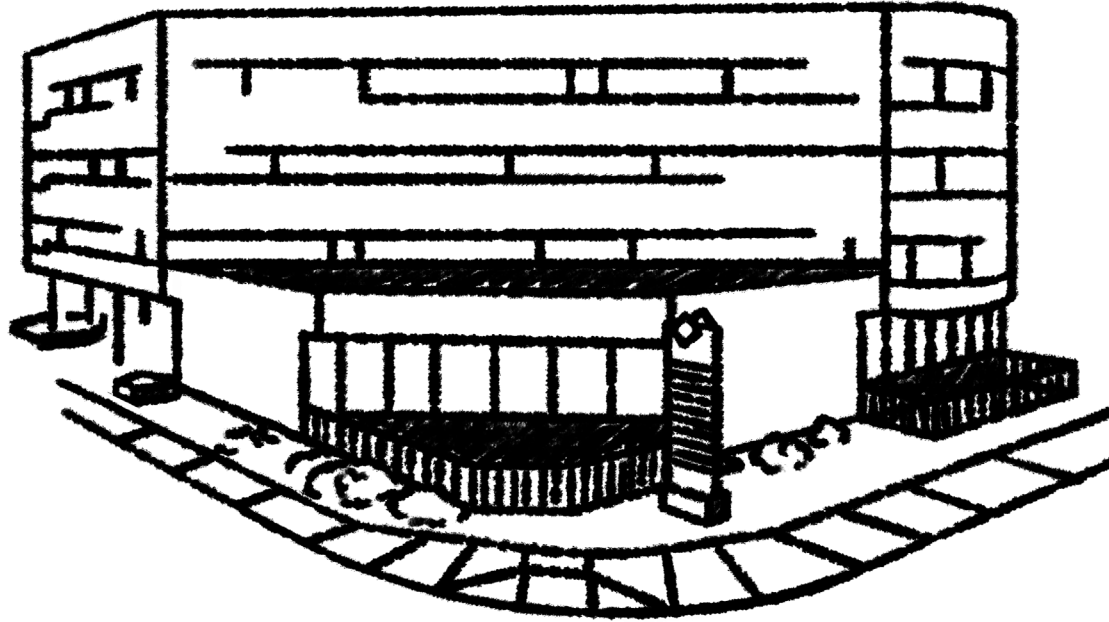




# Expo Colorado

695 South Colorado Blvd  
Denver, Colorado 80246



## About

- Easy access to I-25 and Downtown Denver
- Excellent views
- Close proximity to hotels, restaurants and retail
- On-site storage
- Monument signage on Colorado Blvd
- Covered and off-street parking
- Upscale Cherry Creek demographics
- Skylights throughout the building

## Details

ADDRESS	695 S Colorado Blvd
CITY + COUNTY	Denver, Denver
NUMBER OF FLOORS	4 + Garden Level
APPROX. FLOOR PLATE	16,548 SF
CONSTRUCTED	1982
OWNER	KEW Realty Corporation
PARKING	2.57:1,000



KEW Realty  
Corporation

300 S Jackson St #550  
Denver, Colorado 80209

[kewrealty.com](http://kewrealty.com)

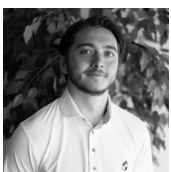
# Expo Colorado

695 South Colorado Blvd  
Denver, Colorado 80246



## Availability

SUITE	SF	RATE/SF	DETAILS
110	1,326	25.00/SF	This 1st floor suite includes a large open workspace, 2 private offices, a kitchen, and a
200	1,589	25.00/SF	The 2nd floor suite has 5 private offices, a kitchen, and an entry/reception area.
320	1,292	25.00/SF	This 3rd floor suite features a reception area with an open floor layout. Previously used as a dentist office, this unit is perfect for small medical practices or businesses.
390	579	24.00/SF	This 3rd floor suite has 2 private offices and an open reception/waiting area.
420	489	24.00/SF	This 4th floor suite include 1 large private office and an entry/reception area.
440	1,067	24.00/SF	This 4th floor suite has 4 large enclosed offices and an entry/reception area.



**Blake Ham**  
Leasing Manager

720.308.2230  
bham@kewrealty.com



kewrealty.com