

# KOHL'S ANCHORED PAD SITE

Elizabethtown, KY 42701 | 3100 N Dixie Hwy | Dixie Hwy & Northcrest Drive | #1190



- Kohl's outparcel available (Approximately 0.60 Acres)
- Pad site fronts Dixie Hwy
- Easily accessible and good visibility

DEMOGRAPHICS	1 MILE	3 MILES	5 MILES	TRAFFIC COUNTS	
2018 POPULATION	21,064	48,378	71,797	N Dixie Hwy	29,458 VPD
2018 DAYTIME POPULATION	27,402	63,279	83,113	Pear Orchard Rd	2,579 VPD
2018 AVERAGE HH INCOME	\$79,290	\$72,848	\$71,888		
2018 MEDIAN HH INCOME	\$57,285	\$53,474	\$54,340		

AVAILABLE:  
0.60 ACRES

GROUND LEASE:  
CALL FOR DETAILS

ZONING:  
COMMERCIAL

USE RESTRICTION:  
CALL FOR DETAILS

## AREA ANCHORS



FOR MORE INFORMATION, CONTACT EXCLUSIVE AGENT(S):  
KEVIN SCHREIBER • kevin.schreiber@tscg.com • 502.874.5934  
KEVIN MAYHUGH • kevin.mayhugh@tscg.com • 502.874.5933

Demographics: Esri

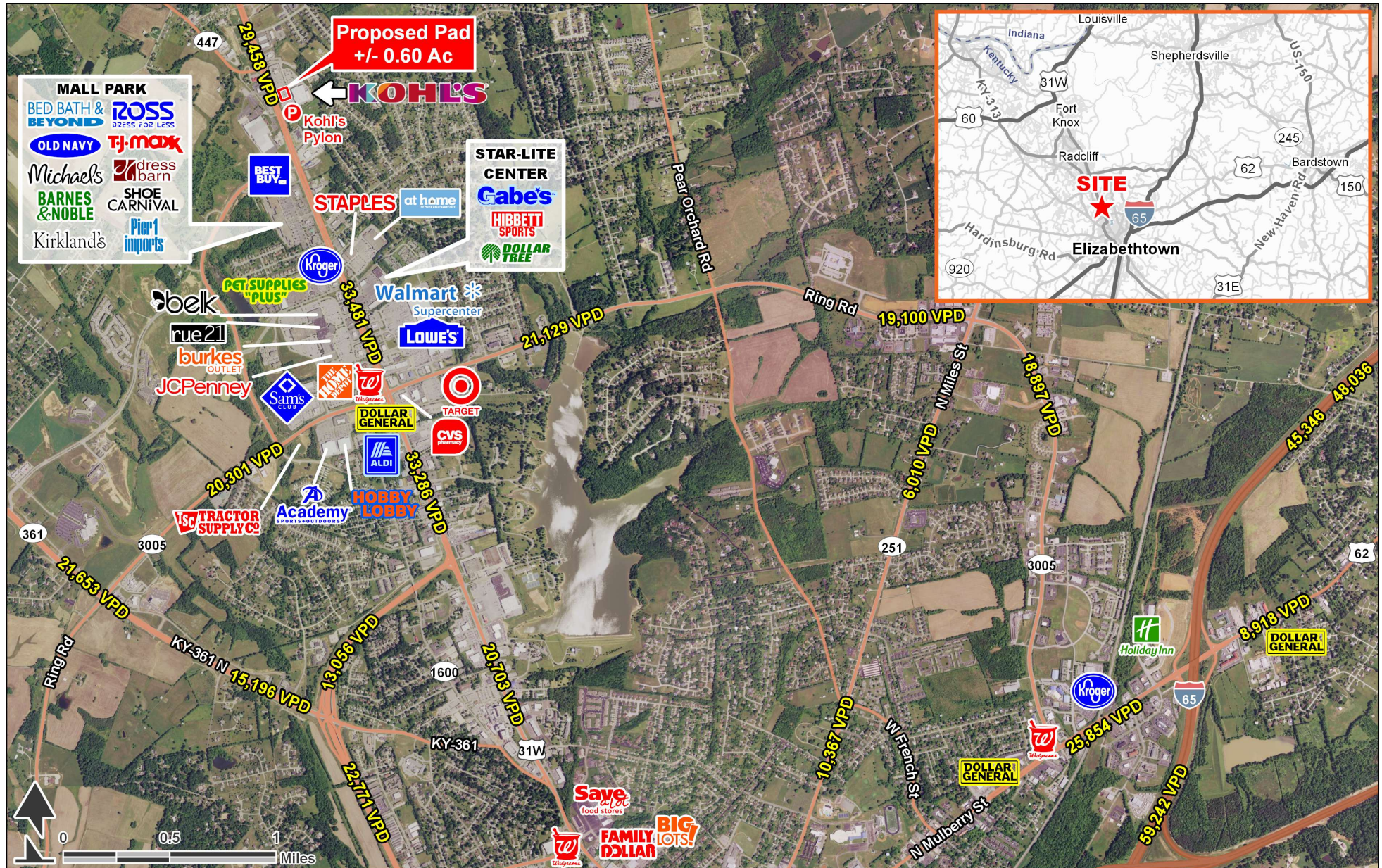
No warranty expressed or implied has been made as to the accuracy of the information provided herein, no liability assumed for error or omissions.

CHAINLINKS  
RETAIL ADVISORS



# KOHL'S ANCHORED PAD SITE

Elizabethtown, KY 42701 | 3100 N Dixie Hwy | Dixie Hwy & Northcrest Drive | #1190



**FOR MORE INFORMATION, CONTACT EXCLUSIVE AGENT(S):**

KEVIN SCHREIBER • [kevin.schreiber@tscg.com](mailto:kevin.schreiber@tscg.com) • 502.874.5934

KEVIN MAYHUGH • kevin.mayhugh@tscg.com • 502.874.5933

**CHAINLINKS**  
RETAIL ADVISORS

Demographics: Esri

No warranty expressed or implied has been made as to the accuracy of the information provided herein, no liability assumed for error or omissions.



# KOHL'S ANCHORED PAD SITE

Elizabethtown, KY 42701 | 3100 N Dixie Hwy | Dixie Hwy & Northcrest Drive | #1190



FOR MORE INFORMATION, CONTACT EXCLUSIVE AGENT(S):

KEVIN SCHREIBER • [kevin.schreiber@tscg.com](mailto:kevin.schreiber@tscg.com) • 502.874.5934

KEVIN MAYHUGH • [kevin.mayhugh@tscg.com](mailto:kevin.mayhugh@tscg.com) • 502.874.5933

TSCG

Demographics: Esri

No warranty expressed or implied has been made as to the accuracy of the information provided herein, no liability assumed for error or omissions.

**CHAINLINKS**  
RETAIL ADVISORS