



RESTAURANT

1550 CHURCH STREET

Noe Valley Restaurant Opportunity

maven
RETAIL



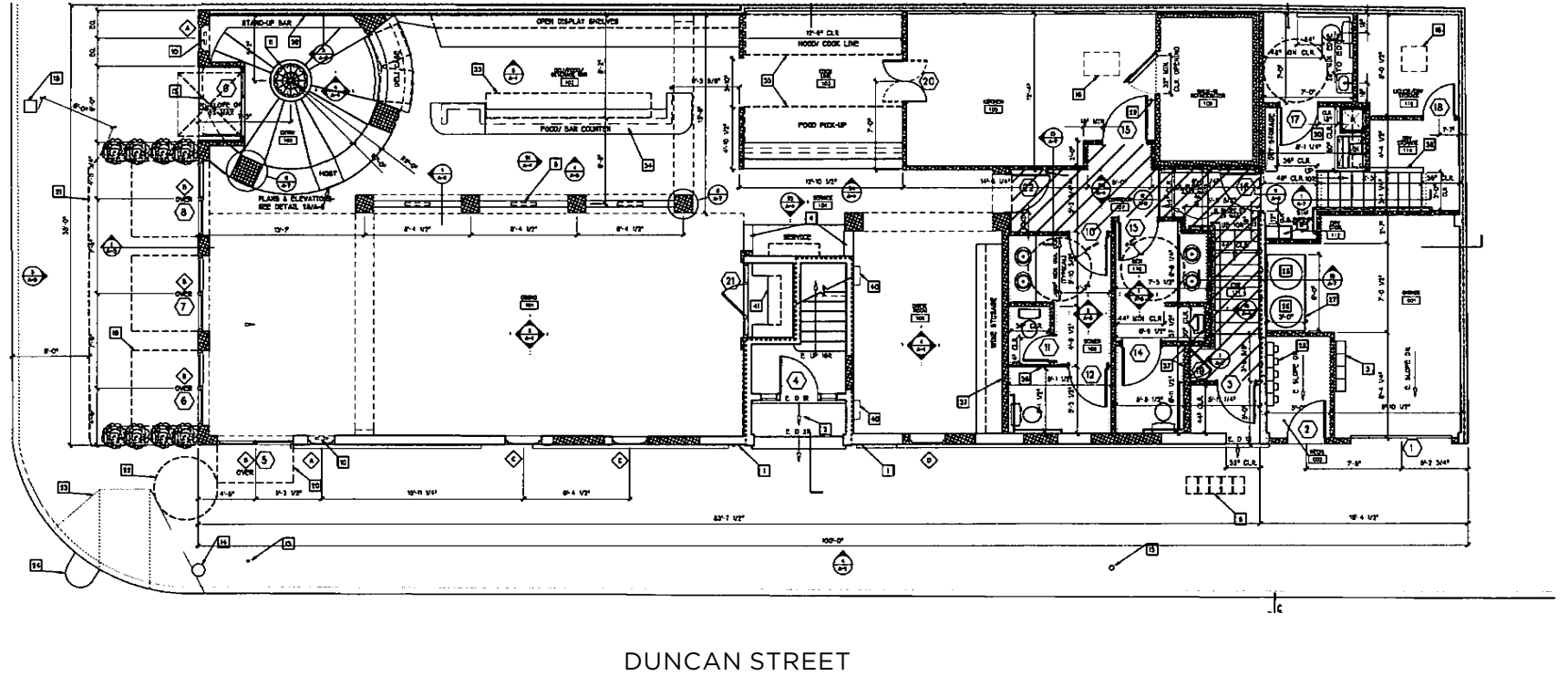
FEATURES

3,200 SF restaurant

- Two type 1-hoods
- Fully built out bar
- Private dining room for 20 guests
- Light filled space
- Operational sliding doors at the storefront
- Outdoor seating is possible
- Located on the hard corner of Church and Duncan in the sought after Noe Valley Neighborhood



CHURCH STREET





NOE VALLEY



Walk/Bike/Transit Score



95

WALK SCORE



95

BIKE SCORE



80

TRANSIT SCORE

BUS LINES: 14, 24, 36, 48



WHOLE FOODS MARKET



NOE VALLEY BAKERY



**BARON'S QUALITY
MEATS AND SEAFOOD**



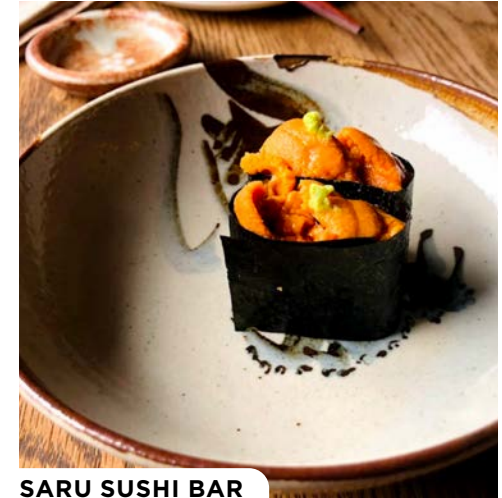
LA CICCIA



TOAST EATERY



OMNIVORE BOOKS



SARU SUSHI BAR

NEO VALLEY

1550 Church Street is located in the Noe Valley.

Experience the charm of Noe Valley at 1550 Church Street, where picturesque Victorian homes line tree-shaded streets, creating a serene urban oasis. Nestled in the heart of San Francisco, Noe Valley offers a vibrant community atmosphere with boutique shops, artisanal eateries, and a bustling Sunday farmer's market. Enjoy easy access to parks like Dolores Park and Twin Peaks, perfect for outdoor enthusiasts. With its mix of historic architecture and modern amenities, Noe Valley presents an ideal blend of city living and neighborhood charm.



Contact

CATHERINE MEUNIER

415.806.5566

catherine@mavenproperties.com

DRE #01843732

PAMELA MENDELSON

415.404.6650

pam@mavenproperties.com

DRE #00953050

GLORIA NORDBAKK

415.225.0626

gloria@mavenproperties.com

DRE #02207407

SAGE MIRSKY

907.821.1049

sage@mavenproperties.com

DRE #02238781

HALLIE FORMAN

415.426.7808

hallie@mavenproperties.com

DRE #02252563

NOTICE: This information has been secured from sources we believe to be reliable but we make no representations, warranties, express or implied, as to the accuracy of the information. Listing broker has been given enough information to provide only a preliminary interest in the property. The materials are not to be considered fact. The information contained herein is not a substitute for thorough due diligence investigation. References to square footage, zoning, use, or age are approximate. Please contact the San Francisco Planning Department to verify zoning at (415) 558-6378, as neither broker or landlord represent that this space is suitable for your use. Tenant or Buyer must verify the information at their own expense and bears all the risk for any inaccuracies. By receiving these materials you are agreeing to the disclaimers set forth herein. DRE#01878802

466 Green Street Suite #203

San Francisco, CA 94133

415-781-770

www.mavenproperties.com

maven
RETAIL