



For Sublease

Existing medical office buildout

- Term thru January 2027
- 2,991 SF
- Two 5-year renewal options
- Space is unique in that it has full kitchen buildout despite being located on 2nd floor of property

2639 Connecticut Ave NW
Suite 251
Washington DC 20008

Abby Albright
202 719 6145

Abby.Albright@am.jll.com

DISCLAIMER

Although information has been obtained from sources deemed reliable, neither Owner nor JLL makes any guarantees, warranties or representations, express or implied, as to the completeness or accuracy as to the information contained herein. Any projections, opinions, assumptions or estimates used are for example only. There may be differences between projected and actual results, and those differences may be material. The Property may be withdrawn without notice. Neither Owner nor JLL accepts any liability for any loss or damage suffered by any party resulting from reliance on this information. If the recipient of this information has signed a confidentiality agreement regarding this matter, this information is subject to the terms of that agreement. ©2017 Jones Lang LaSalle IP, Inc. All rights reserved.

>>Check local legal requirements on the legal Connect page and paste additional requirements here, replacing this line and make black<<



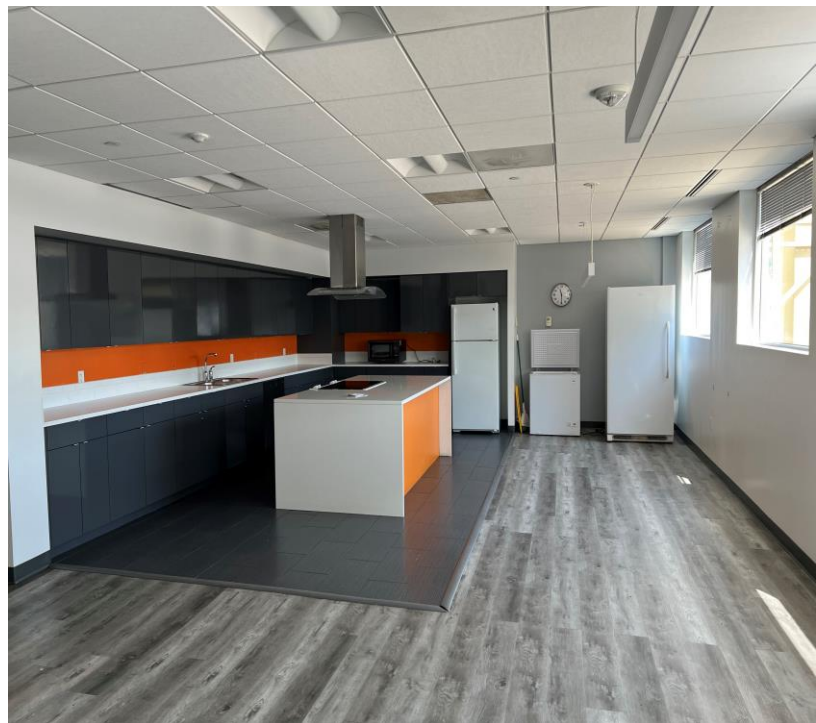


DISCLAIMER

Although information has been obtained from sources deemed reliable, neither Owner nor JLL makes any guarantees, warranties or representations, express or implied, as to the completeness or accuracy as to the information contained herein. Any projections, opinions, assumptions or estimates used are for example only. There may be differences between projected and actual results, and those differences may be material. The Property may be withdrawn without notice. Neither Owner nor JLL accepts any liability for any loss or damage suffered by any party resulting from reliance on this information. If the recipient of this information has signed a confidentiality agreement regarding this matter, this information is subject to the terms of that agreement. ©2017 Jones Lang LaSalle IP, Inc. All rights reserved.

>>Check local legal requirements on the legal Connect page and paste additional requirements here, replacing this line and make black<<



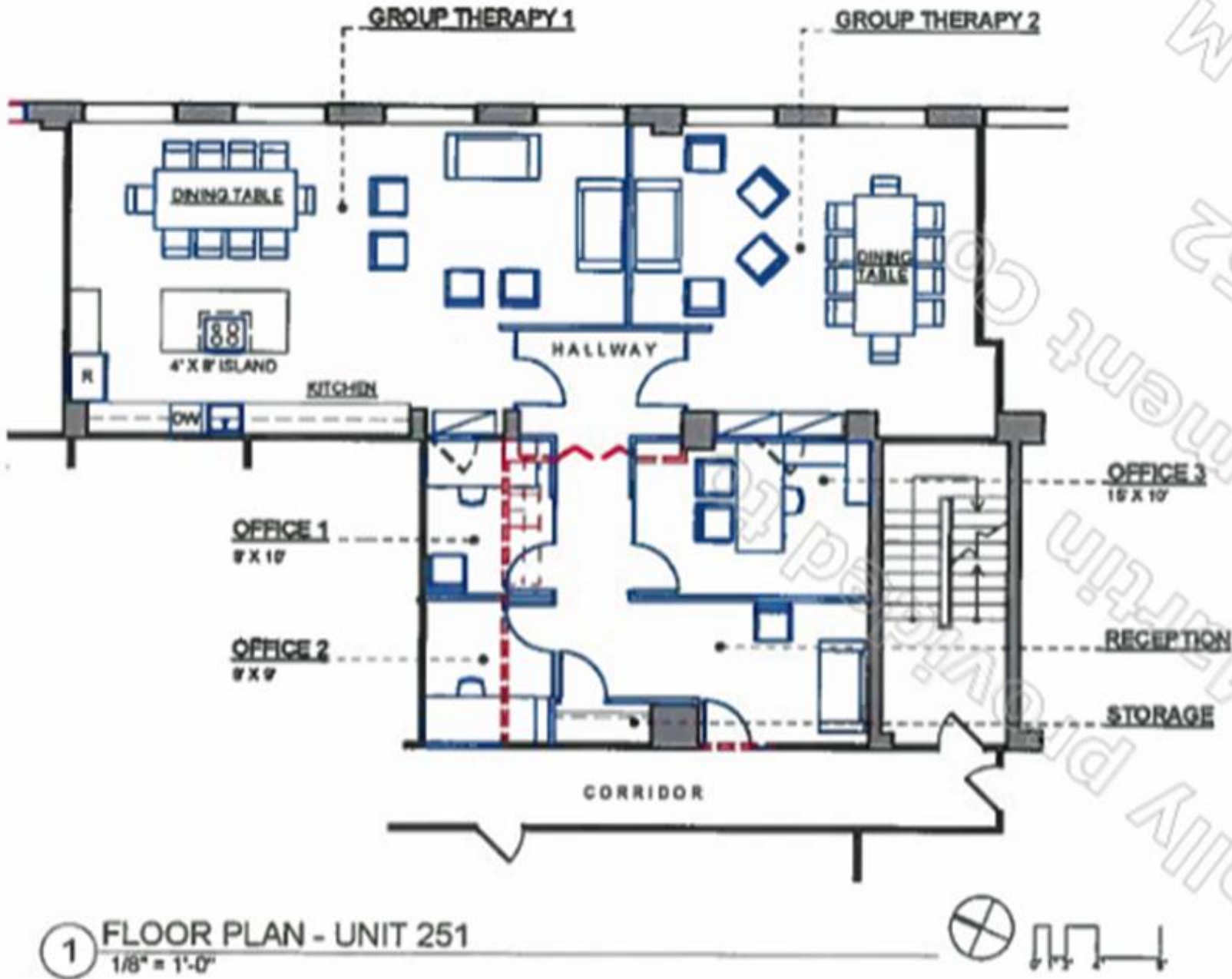


DISCLAIMER

Although information has been obtained from sources deemed reliable, neither Owner nor JLL makes any guarantees, warranties or representations, express or implied, as to the completeness or accuracy as to the information contained herein. Any projections, opinions, assumptions or estimates used are for example only. There may be differences between projected and actual results, and those differences may be material. The Property may be withdrawn without notice. Neither Owner nor JLL accepts any liability for any loss or damage suffered by any party resulting from reliance on this information. If the recipient of this information has signed a confidentiality agreement regarding this matter, this information is subject to the terms of that agreement. ©2017 Jones Lang LaSalle IP, Inc. All rights reserved.

>>Check local legal requirements on the legal Connect page and paste additional requirements here, replacing this line and make black<<





DISCLAIMER

Although information has been obtained from sources deemed reliable, neither Owner nor JLL makes any guarantees, warranties or representations, express or implied, as to the completeness or accuracy as to the information contained herein. Any projections, opinions, assumptions or estimates used are for example only. There may be differences between projected and actual results, and those differences may be material. The Property may be withdrawn without notice. Neither Owner nor JLL accepts any liability for any loss or damage suffered by any party resulting from reliance on this information. If the recipient of this information has signed a confidentiality agreement regarding this matter, this information is subject to the terms of that agreement. ©2017 Jones Lang LaSalle IP, Inc. All rights reserved.

>>Check local legal requirements on the legal Connect page and paste additional requirements here, replacing this line and make black<<

