

FOR SALE
284 Dupont St
User/Investment Opportunity



METROPOLITAN COMMERCIAL REALTY INC., Brokerage



DETAILS

Location	On Dupont Street, west of Spadina Ave. CLICK HERE
Building Area	2,223 SF
Lot Area	3,215 SF
Frontage	25.90 Feet
Zoning	Former City of Toronto By-Law No. 438.86
Asking Price	\$1,945,000.00

FEATURES

- Prime North Annex Location on Dupont Street
- Future Development Potential
- Unique 2 Storey Storefront with 1 Retail Unit and a 3-Bedroom Apartment
- Current Triple A Tenant
- High Ceilings, rear and front decks, Architectural Detailing, Wood Floors,
- Steps from Yorkville, Rosedale, Summerhill, walking traffic
- Finished Basement



METROPOLITAN COMMERCIAL REALTY INC., Brokerage



METROPOLITAN COMMERCIAL REALTY INC., Brokerage

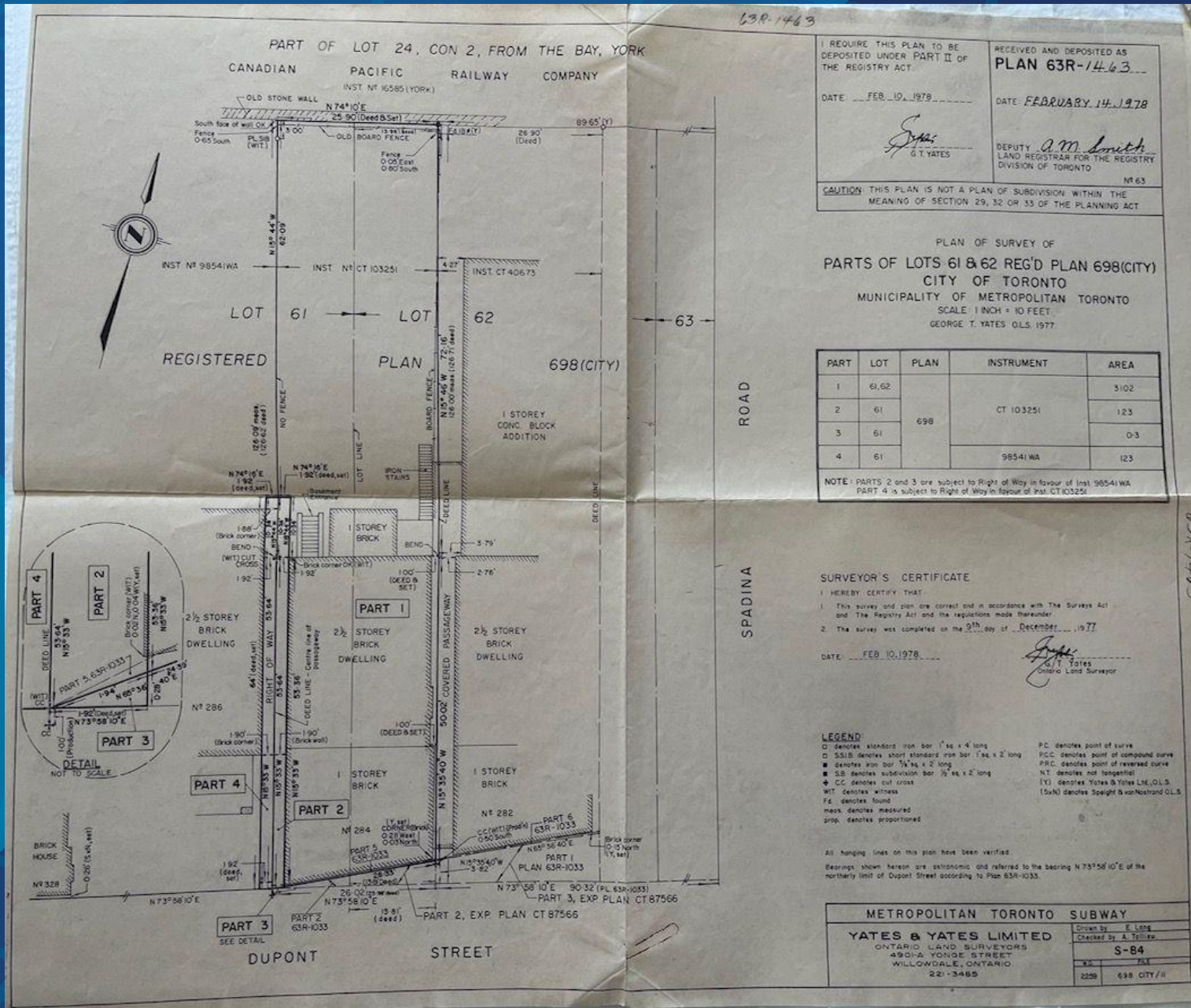


METROPOLITAN COMMERCIAL REALTY INC., Brokerage

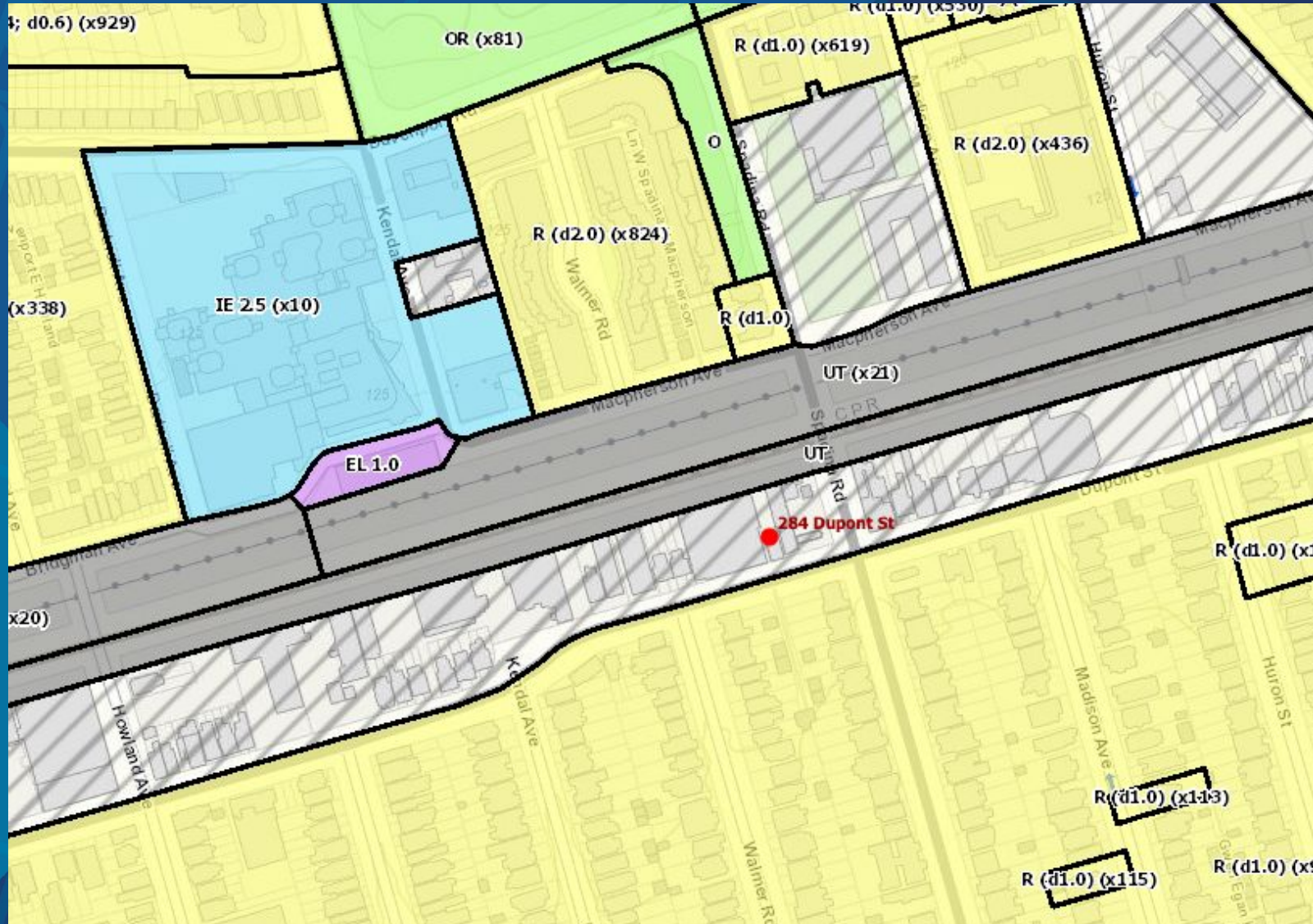


METROPOLITAN COMMERCIAL REALTY INC., Brokerage

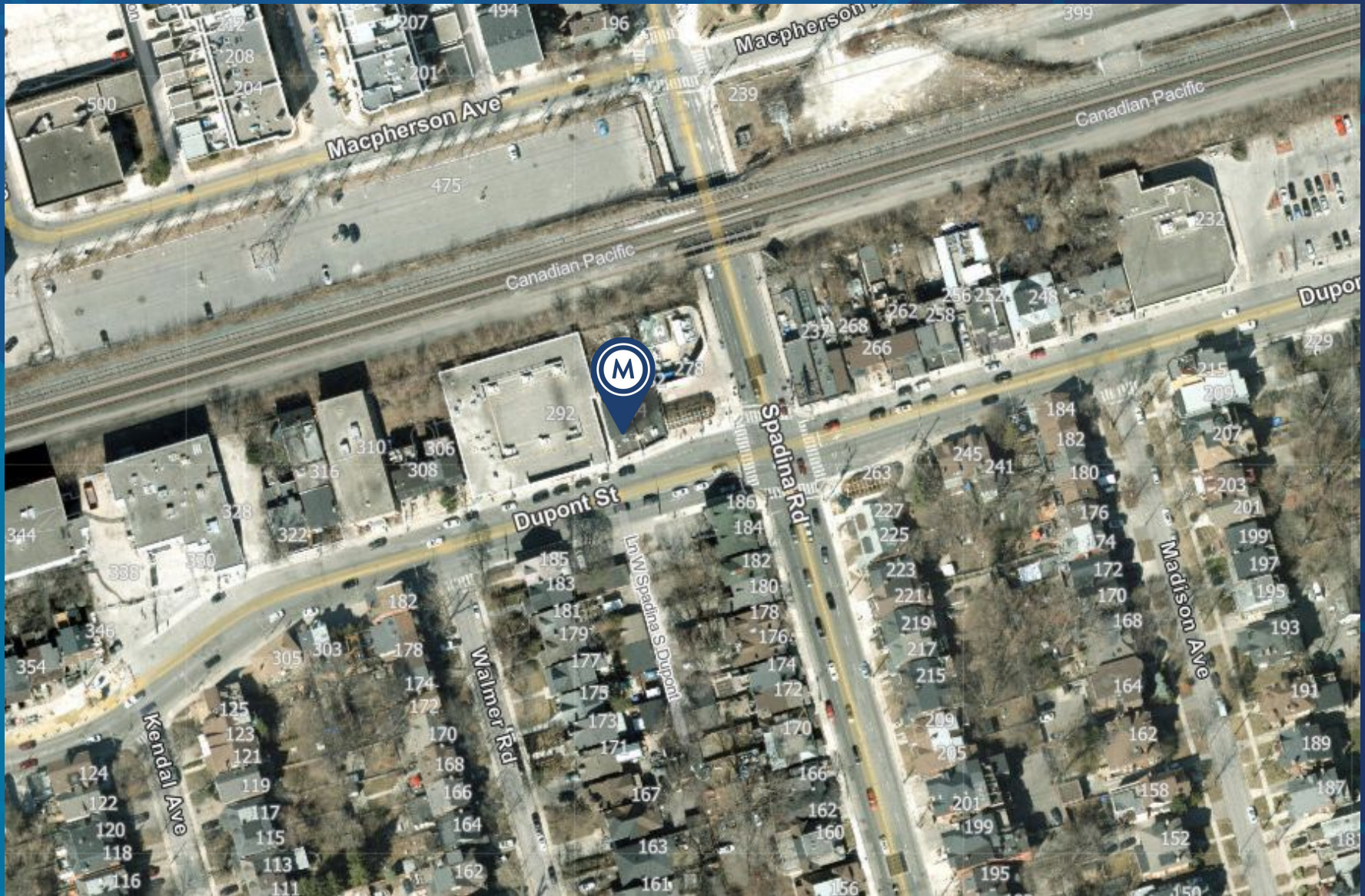
SURVEY



ZONING: (Former City of Toronto By-Law No. 438.86)



AREA MAP



CONNECTIVITY



BIKE SCORE OF 70

→ Daily errands can be accomplished on a bike



TRANSIT SCORE OF 93

→ World-class public transportation



WALK SCORE OF 95

→ Daily errands do not require a car



METROPOLITAN
COMMERCIAL





METROPOLITAN
COMMERCIAL

Claire Blicker

Vice President,
Sales Representative

M. 416.272.5263

W. 416.703.6621 ext. 232

claire.blicker@metcomrealty.com

150 Beverley Street, Suite 1 M5T 1Y5

416.703.6621

www.metcomrealty.com