

9 LOT SUBDIVISION FOR SALE

0 Lazy Hill Road
Moncks Corner, SC 29461

Kip Bowman | Principal | kipbowman@gmail.com
Sraa Bodell | Broker | sbodell@cbcatlantic.com



COLDWELL BANKER
COMMERCIAL
ATLANTIC

9 LOT SUBDIVISION FOR SALE

PROPERTY OVERVIEW

28 acres entitled for 9 lots. Includes: wetland permits, engineering for road, engineering for subdivision, platted lots, property boundary pins installed, DHEC permits, engineered septic where applicable, DHEC septic where applicable, soils study, and archeology study. Designed for underground electric, septic and well. Can be easily modified for municipal water line. Owner will not agree to a partial sale. TMS: 1960001002 & 1960001001 are the parent tracts. Owner is a licensed Real Estate Agent in South Carolina. Call agent for subdivision approvals, permits and documents.



PRICE

\$1,600,000



ZONING

Residential



ACRES

28 Acres



COUNTY

Berkeley County



TAX ID

196-00-01-002
196-00-01-001

0 Lazy Hill Road | Moncks Corner, SC 29461

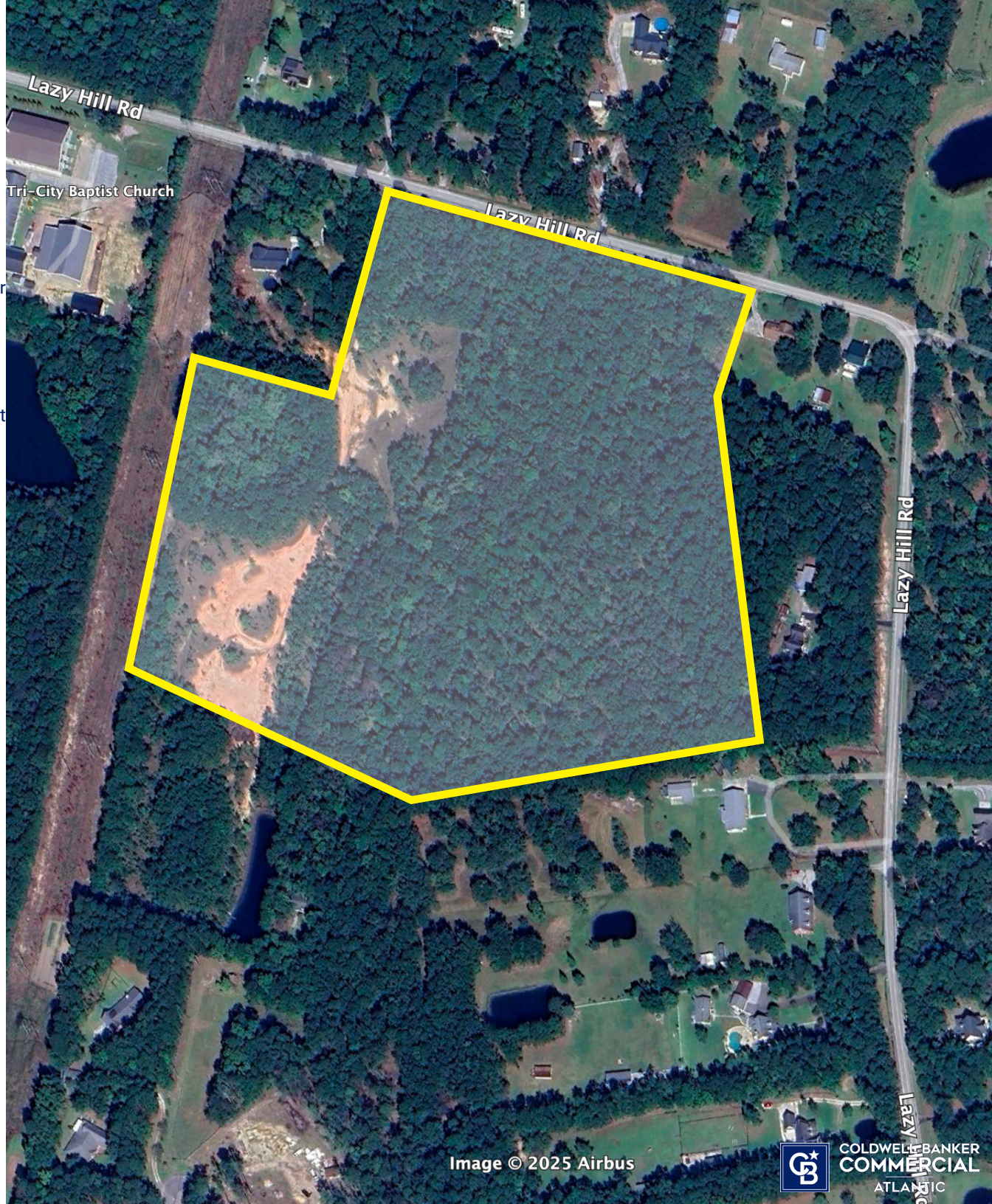
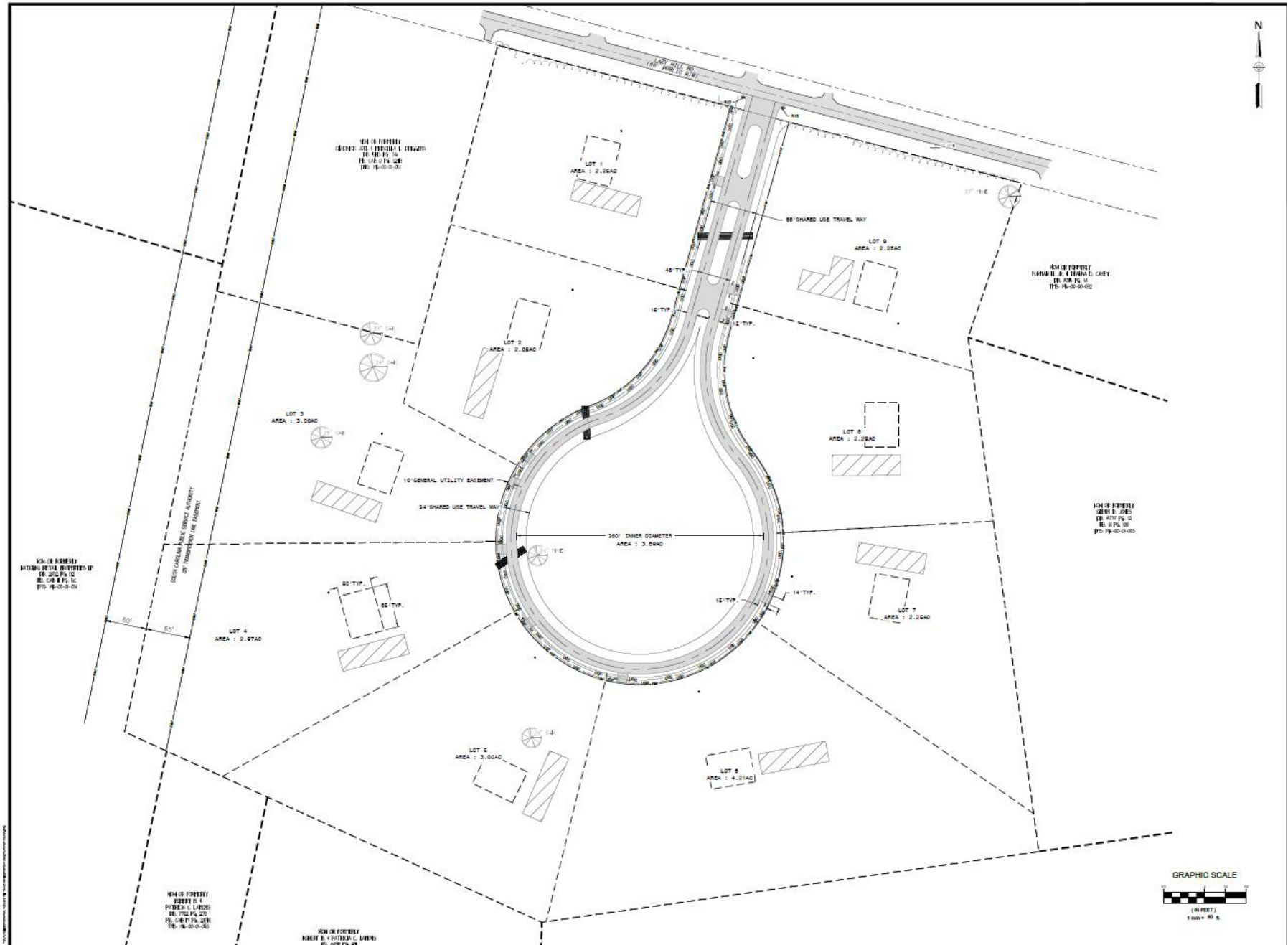


Image © 2025 Airbus



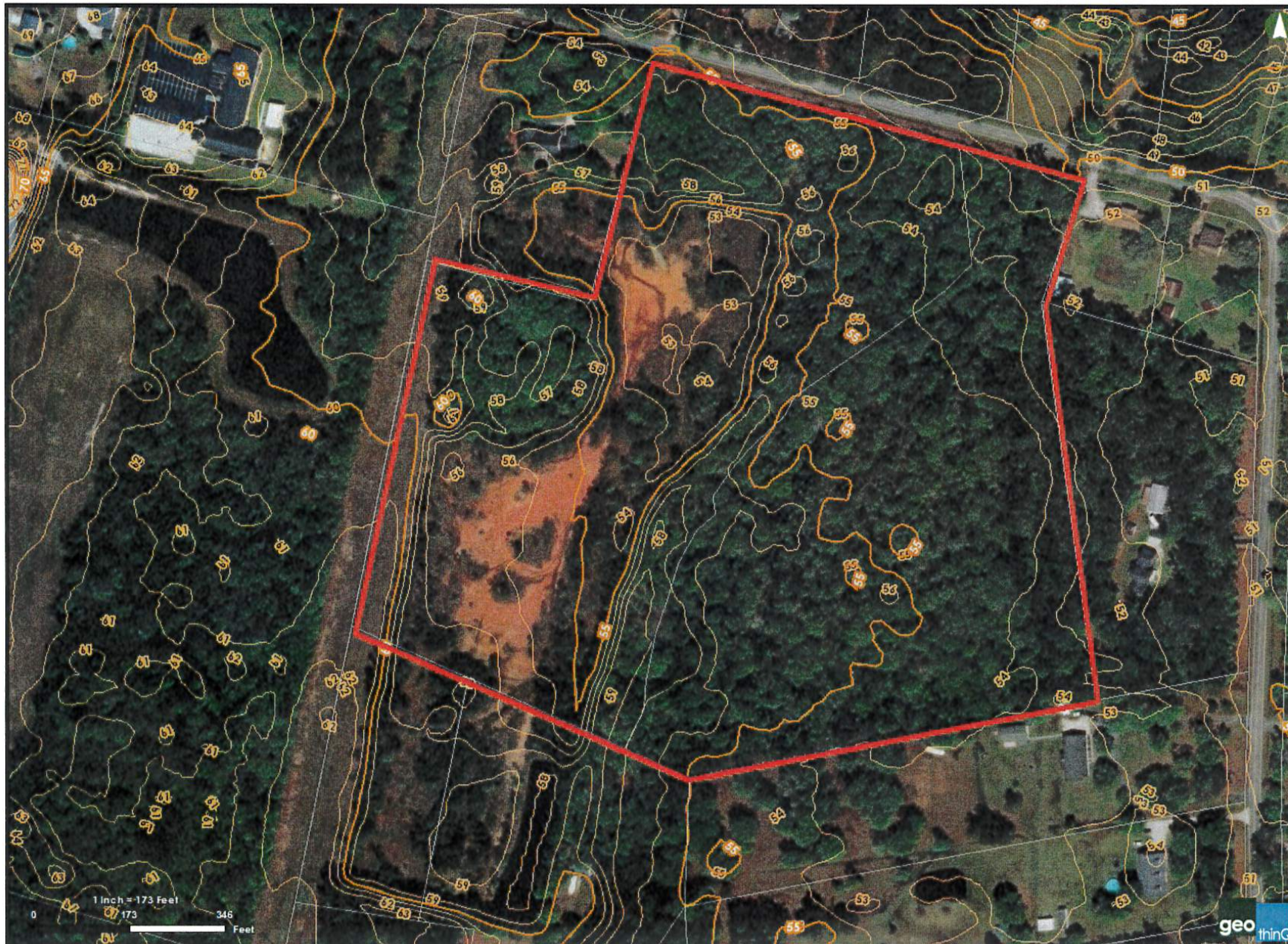
COLDWELL BANKER
COMMERCIAL
ATLANTIC

9 LOT SUBDIVISION FOR SALE



9 LOT SUBDIVISION FOR SALE

TOPO MAP



Rhodes elevations

THEME
09/26/2019

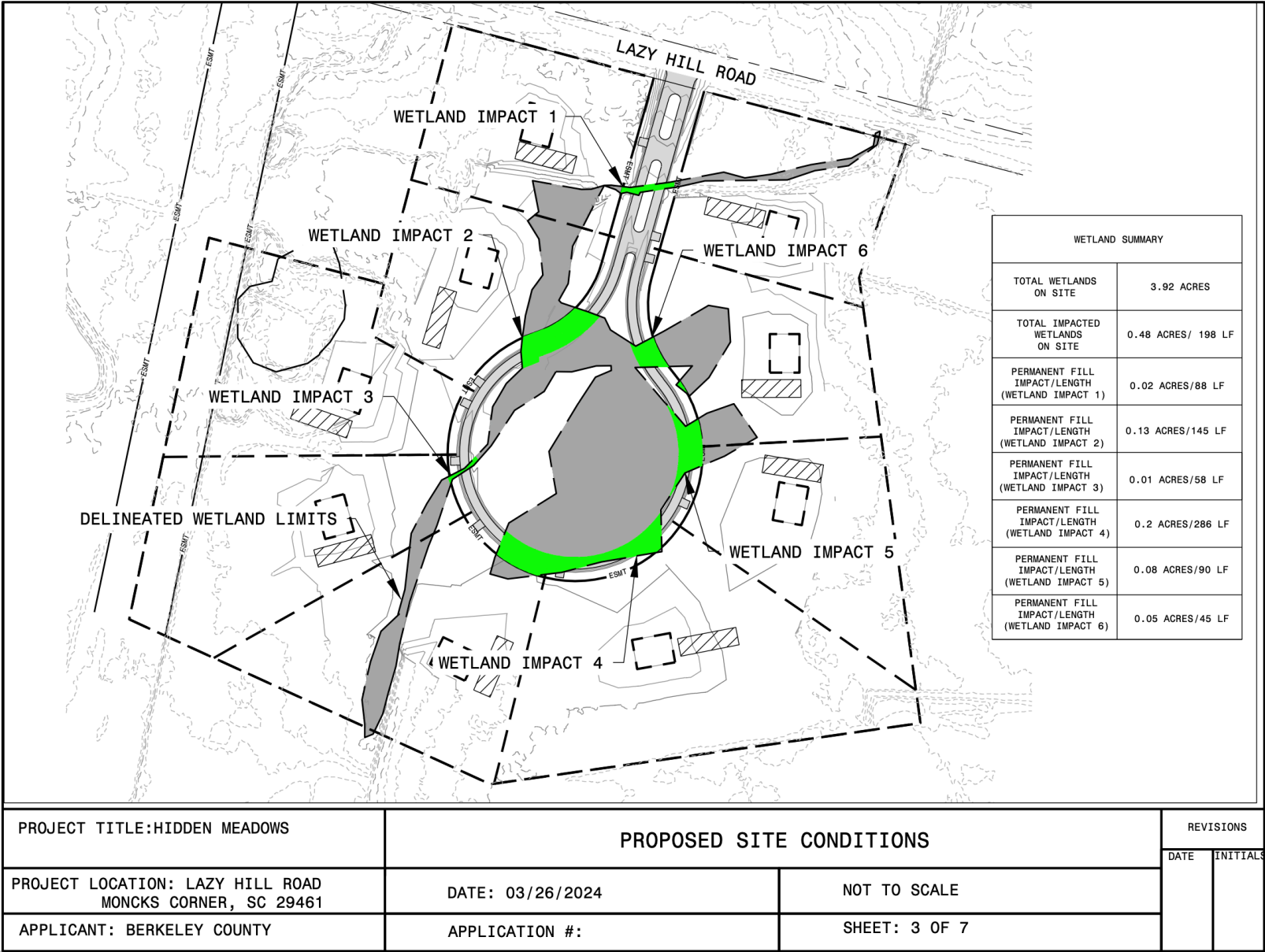
☐ Parcels

geo
thinQ

This map was created using geothinq | www.geothinq.com | Mapping Smart Land Decisions

0 Lazy Hill Road | Moncks Corner, SC 29461

WETLAND MAP



9 LOT SUBDIVISION FOR SALE

LOCATION

Centex Homes

Publix Super Market at The Market at Cane Bay



0 Lazy Hill Road



Roper St. Francis



Berkeley Hospital



ALT 17

52

52

0 Lazy Hill Road | Moncks Corner, SC 29461



9 LOT SUBDIVISION FOR SALE

PROXIMITY MAP

- 9.9 Miles to Summerville, SC
- 18.9 Miles to Charleston International Airport
- 25.9 Miles to Downtown Charleston, SC
- 28.5 Miles to Mount Pleasant, SC

0 Lazy Hill Road

Francis Marion National Forest

SUMMERVILLE

CHARLESTON
INTERNATIONAL
AIRPORT

MOUNT PLEASANT

DOWNTOWN
CHARLESTON

0 Lazy Hill Road | Moncks Corner, SC 29461



COLDWELL BANKER
COMMERCIAL
ATLANTIC

DEMOGRAPHICS

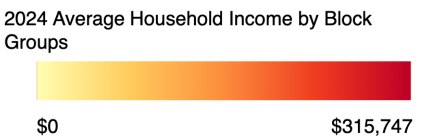


23,300

Vehicles per Day on
S Live Oak Drive

Demographics	3 Miles	5 Miles	10 Miles
Total Population:	22,382	61,388	219,957
Total Households:	8,052	21,848	83,219
Average HH Income:	\$107,743	\$103,214	\$99,632

0 Lazy Hill Rd, Moncks Corner, South Carolina, 29461



All demographics based on Esri forecasts for 2024

SCDOT AADT 2023



5,387

Businesses
within 10 Miles



62,596

Employees
within 10 Miles



219,957

Population
within 10 Miles

0 Lazy Hill Road | Moncks Corner, SC 29461

Kip Bowman

Principal

(C) 843.437.0074

kipbowman@gmail.com

Sara Bodell

Broker

(C) 864.903.2731

sbodell@cbsatlantic.com



**COLDWELL BANKER
COMMERCIAL
ATLANTIC**

3506 W Montague Ave Suite 200

North Charleston, SC 29418

843.744.9877

cbsatlantic.com | cbcretailatlantic.com

This information has been obtained from sources believed reliable but has not been verified for accuracy or completeness. Coldwell Banker Commercial Atlantic makes no guarantee, representation or warranty and accepts no responsibility or liability as to the accuracy, completeness, or reliability of the information contained herein. You should conduct a careful, independent investigation of the property and verify all information. Any reliance on this information is solely at your own risk.

The information contained herein should be considered confidential and remains the sole property of Coldwell Banker Commercial Atlantic at all times. Although every effort has been made to ensure accuracy, no liability will be accepted for any errors or omissions. Disclosure of any information contained herein is prohibited except with the express written permission of Coldwell Banker Commercial Atlantic.