



COMMERCIAL®

Mixed Use Space Available for Lease

HIGHLIGHTS

- Lease Price: \$3,600
- SQFT: 3,600
- Price per SQFT: \$1.00
- Year Built: 1920
- Zoning: CC
- Property Type: Mixed Use
- Listing ID: SN24160817
- Parcel #: 004071001000
- County: Butte



**131 W 1st St, Unit 300
Chico, CA 95928**

www.selectcommercialgroup.com

**CENTURY 21
COMMERCIAL®**

Select Real Estate

The award-winning Select Group of Real Estate Companies provide exceptional customer service at the local, regional, national, and international level, our experienced commercial real estate agents are here to discuss your real estate growth.

©2024 Century 21 Real Estate LLC. CENTURY 21® and CENTURY 21 Commercial® are registered trademarks owned by Century 21 Real Estate LLC. Each office is independently owned and operated.



COMMERCIAL®

131 W 1st St, Unit 300



Gorgeous Downtown space available for office, venue, or mixed use. The suite includes a large oversized kitchenette, one large room with a dance floor, smaller entry room, upstairs storage, closet storage, and a balcony that looks down upon the main room. Located close to Chico State and in the heart of Chico, this building shows the beauty of historical builds with intricate details of the past! If you have been looking for that unique space for your business or artistic ideas this is a must see.

www.selectcommercialgroup.com

CENTURY 21
COMMERCIAL®
Select Real Estate

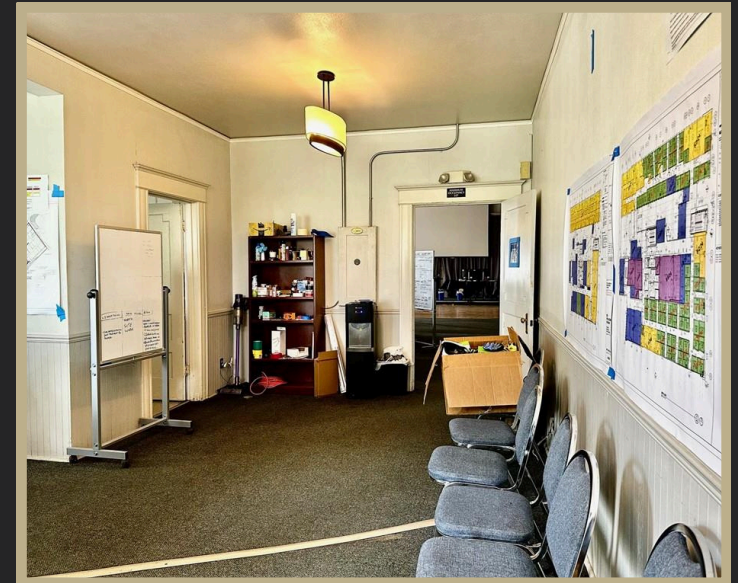
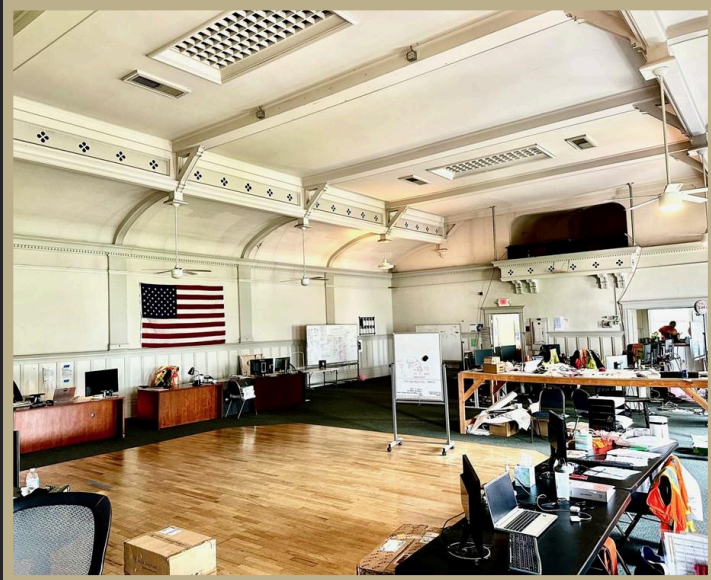
The award-winning Select Group of Real Estate Companies provide exceptional customer service at the local, regional, national, and international level, our experienced commercial real estate agents are here to discuss your real estate growth.

©2024 Century 21 Real Estate LLC. CENTURY 21® and CENTURY 21 Commercial® are registered trademarks owned by Century 21 Real Estate LLC. Each office is independently owned and operated.



COMMERCIAL®

Interior Photos



www.selectcommercialgroup.com

CENTURY 21
COMMERCIAL®
Select Real Estate

The award-winning Select Group of Real Estate Companies provide exceptional customer service at the local, regional, national, and international level, our experienced commercial real estate agents are here to discuss your real estate growth.

©2024 Century 21 Real Estate LLC. CENTURY 21® and CENTURY 21 Commercial® are registered trademarks owned by Century 21 Real Estate LLC. Each office is independently owned and operated.



COMMERCIAL®

City Overview

City of Chico

Chico is the most populous city in Butte County, California, United States. As of the 2010 United States Census, the population was 86,187, reflecting an increase of 26,233 from the 59,954 counted in the 2000 Census. Following the 2018 Camp Fire that destroyed much of the neighboring town of Paradise, the population of Chico surged as many people who lost their homes in the fire moved to Chico. In 2019, the US Census estimated the population of Chico is 103,301. The city is the cultural, economic, and educational center of the northern Sacramento Valley and home to both California State University, Chico and Bidwell Park, the country's 26th largest municipal park and the 13th largest municipally-owned park. Bidwell Park makes up over 17% of the city.



www.selectcommercialgroup.com

**CENTURY 21
COMMERCIAL®**

Select Real Estate

The award-winning Select Group of Real Estate Companies provide exceptional customer service at the local, regional, national, and international level, our experienced commercial real estate agents are here to discuss your real estate growth.

©2024 Century 21 Real Estate LLC. CENTURY 21® and CENTURY 21 Commercial® are registered trademarks owned by Century 21 Real Estate LLC. Each office is independently owned and operated.



COMMERCIAL[®]

For More Information Contact Us:



Kimberly Shaffer

DRE # 01415693

530-680-7685

Kimsellschico@gmail.com

1101 El Monte Ave, Chico CA 95928



Frank Ross

DRE # 01014400

530-624-6375

Frank@norcalemail.com

1101 El Monte Ave, Chico CA 95928

www.selectcommercialgroup.com

**CENTURY 21
COMMERCIAL[®]**

Select Real Estate

The award-winning Select Group of Real Estate Companies provide exceptional customer service at the local, regional, national, and international level, our experienced commercial real estate agents are here to discuss your real estate growth.

©2024 Century 21 Real Estate LLC. CENTURY 21[®] and CENTURY 21 Commercial[®] are registered trademarks owned by Century 21 Real Estate LLC. Each office is independently owned and operated.