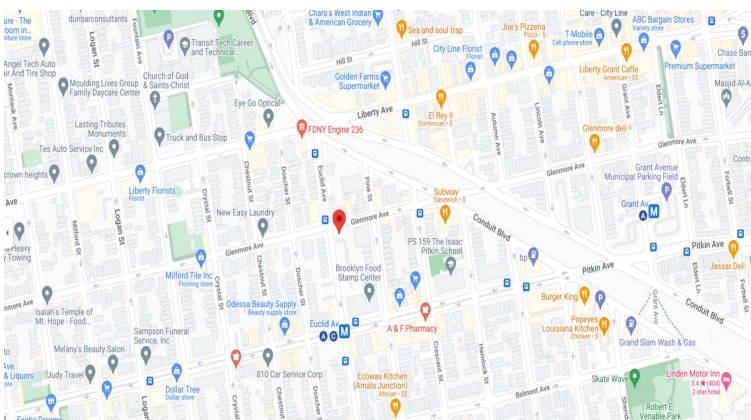
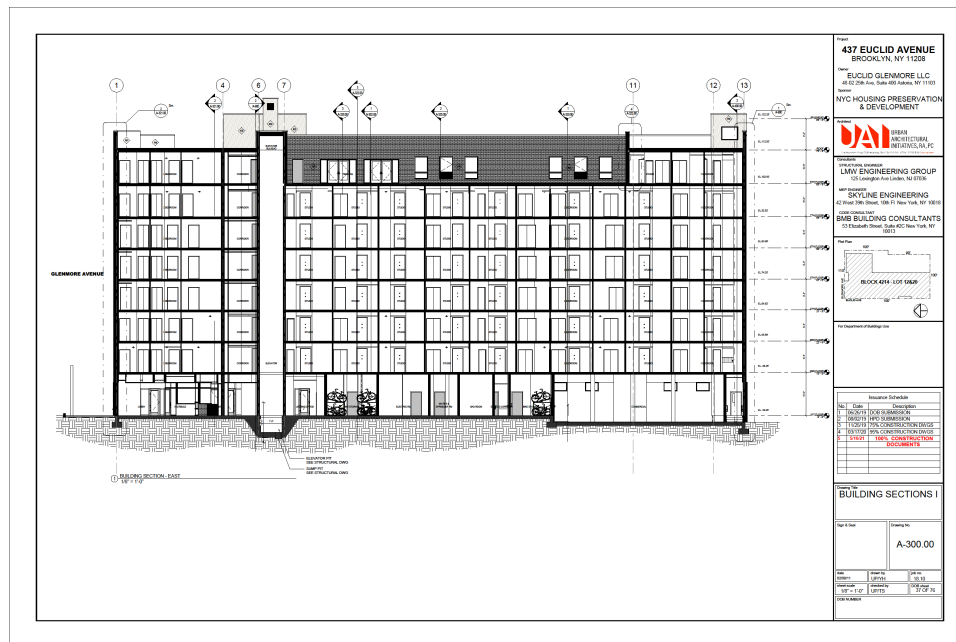


# 437 Euclid Avenue Brooklyn, NY 11208 Price: \$7,500 Per Month



## PROPERTY HIGHLIGHTS:

New Development Site – 160 Families  
Corner Location  
Ground Floor 3000 Sq Ft  
40 ft of Frontage  
HVAC, ADA Bathroom  
Fully Sprinkled

## Property Information:

New Location available in Border of  
Brownsville & East NY  
Near all transportation such as the C  
Train on Liberty Avenue  
For more information Call Samuel Mizrahi  
718-998-5700.Cell 917-561-4526

# CENTURY 21

**Commercial**

**Mizrahi Realty**

We Know The Boroughs

Samuel Mizrahi

Broker Associate

Century 21 Mizrahi Realty

President Commercial Division

916 Kings Highway

Brooklyn, NY 11223

Off: 718-998-5700

Cell: 917-561-4526

Samuelmizrahi3@gmail.com

<https://samuelmizrahicommercial.c21.com/>