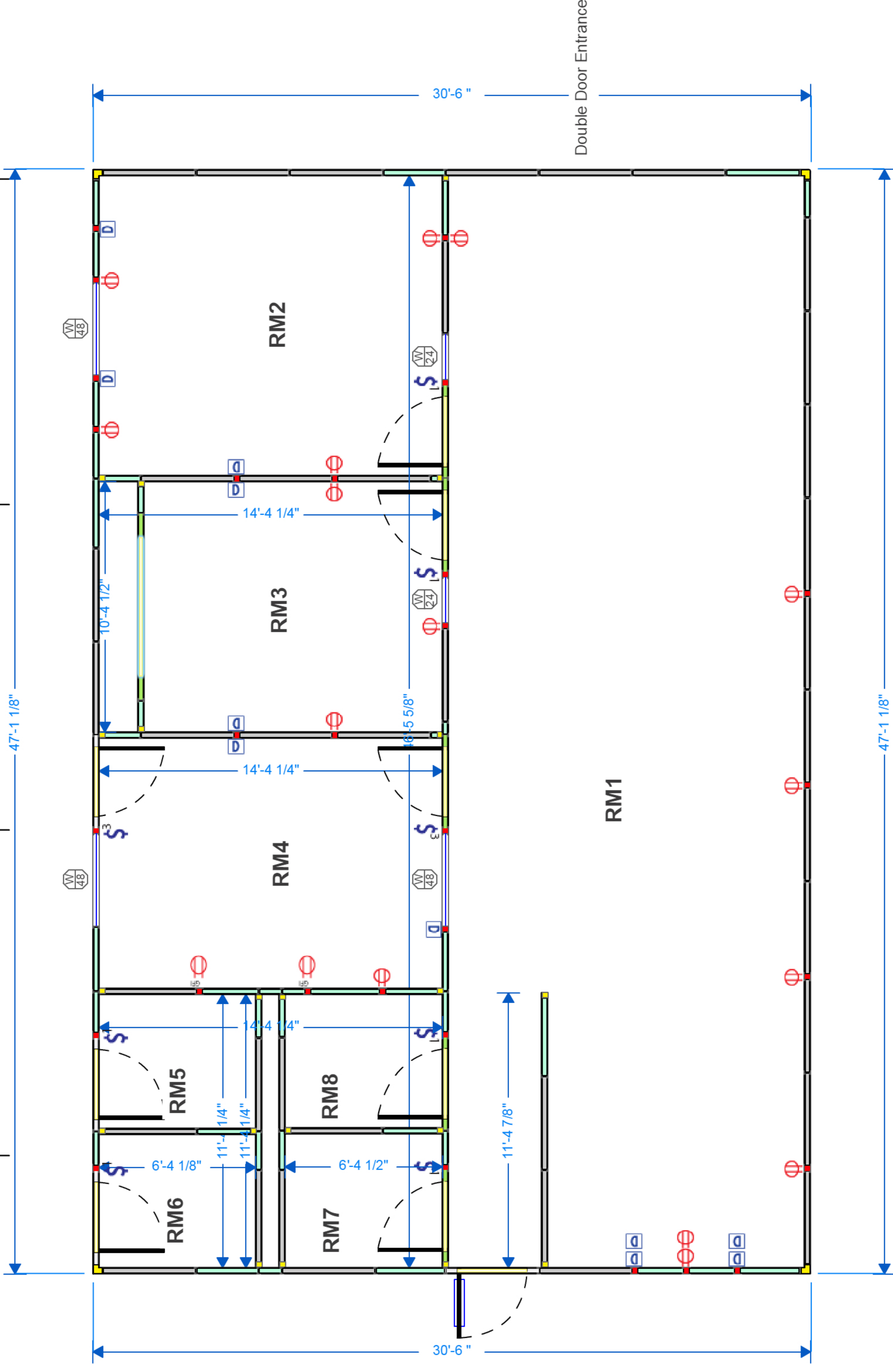


A B C D E F G

Quote NO: IDQ-0001568
 User Name: Admin
 Date: 2015-06-30 at 14:48 PM



Approx Sq Ft 1433.5

APPROVED FOR FABRICATION

DATE: _____
 The signature above indicates that all dimensions and component locations are correct and do not interfere with any field conditions. Should any changes be required after the date above, AMBS will not be liable for any costs incurred.

SHEET NUMBER
A1

| = H-POST / WALL START
 ■ = RACEWAY
 ■ = CORNER POST
 ▲ = 45° CORNER POST

■ = LOAD CENTER
 ■ = LIGHT
 ■ = DOOR
 ■ = DOOR W/ VISION LITE
 ■ = DOUBLE DOOR PANELS

■ = SOLID PANEL (48")
 ■ = CUT SOLID PANEL (LESS THAN 48")
 ■ = WINDOW PANEL
 ■ = SLIDING WINDOW PANEL
 ■ = SINGLE DOOR PANEL
 ■ = DOUBLE DOOR PANELS

\$ = SWITCH
 ⊕ = 110V DUPLEX
 ⊕ = 220V OUTLET
 ⊕ = DATA JACK
 ⊕ = PHONE JACK

PROPERTY:	NOTICE OF PROPRIETARY		
THE INFORMATION CONTAINED HEREIN IS THE PROPRIETARY PROPERTY OF ALLIED MODULAR BUILDING SYSTEMS (AMBS). THE POSSESSOR AGREES TO THE FOLLOWING:	TO MAINTAIN THIS DOCUMENT IN CONFIDENCE. NOT TO REPRODUCE OR COPY IT WHOLE OR IN PART		
BUILDING TYPE:	Interior	WALL HT:	10'-0"
SYSTEM:	Integra 400	CEILING HT:	
FRAME COLOR:	CL-Clear Satin	OVERALL HT:	
INTERIOR:	G02-Gray		
EXTERIOR:	G02-Gray		

JOB NAME:	400 T/I
SOLD TO:	Allied Modular
JOB #:	
SALES ORDER #:	
DESCRIPTION:	30'6" x 47'0" Modular Office



ALLIED MODULAR
 MODERN BUILDING SYSTEMS

Ph. (888) 836-7850
 Fax (800) 588-6792

1

2

3

4