

For Lease | Warehouse with Yard

CBRE

8524 N Sooner Road

Oklahoma City, OK 73151



Jason Hammock, SIOR, CCIM

First Vice President

+1 405 315 0725

jason.hammock@cbre.com

Caitlin Mazaheri, SIOR, CCIM

Vice President

+1 405 413 2315

caitlin.mazaheri@cbre.com

Joe Summers

Senior Associate

+1 405 831 6851

joe.summers@cbre.com

For Lease | Warehouse with Yard

CBRE



Property Details

- + Total Available SF: 8,050± SF
- + Office Size: 1,047± SF
- + Total Land Size: 2± AC
- + Built in 2023
- + PUD Zoning
- + (10) Surface Parking Spaces
- + Clear Height: 18' - 28'
- + (3) OH Doors
- + Fenced Gravel Yard, Gate, Security System
- + Easy access to I-35

Lease Rate:
\$12.00 PSF NNN

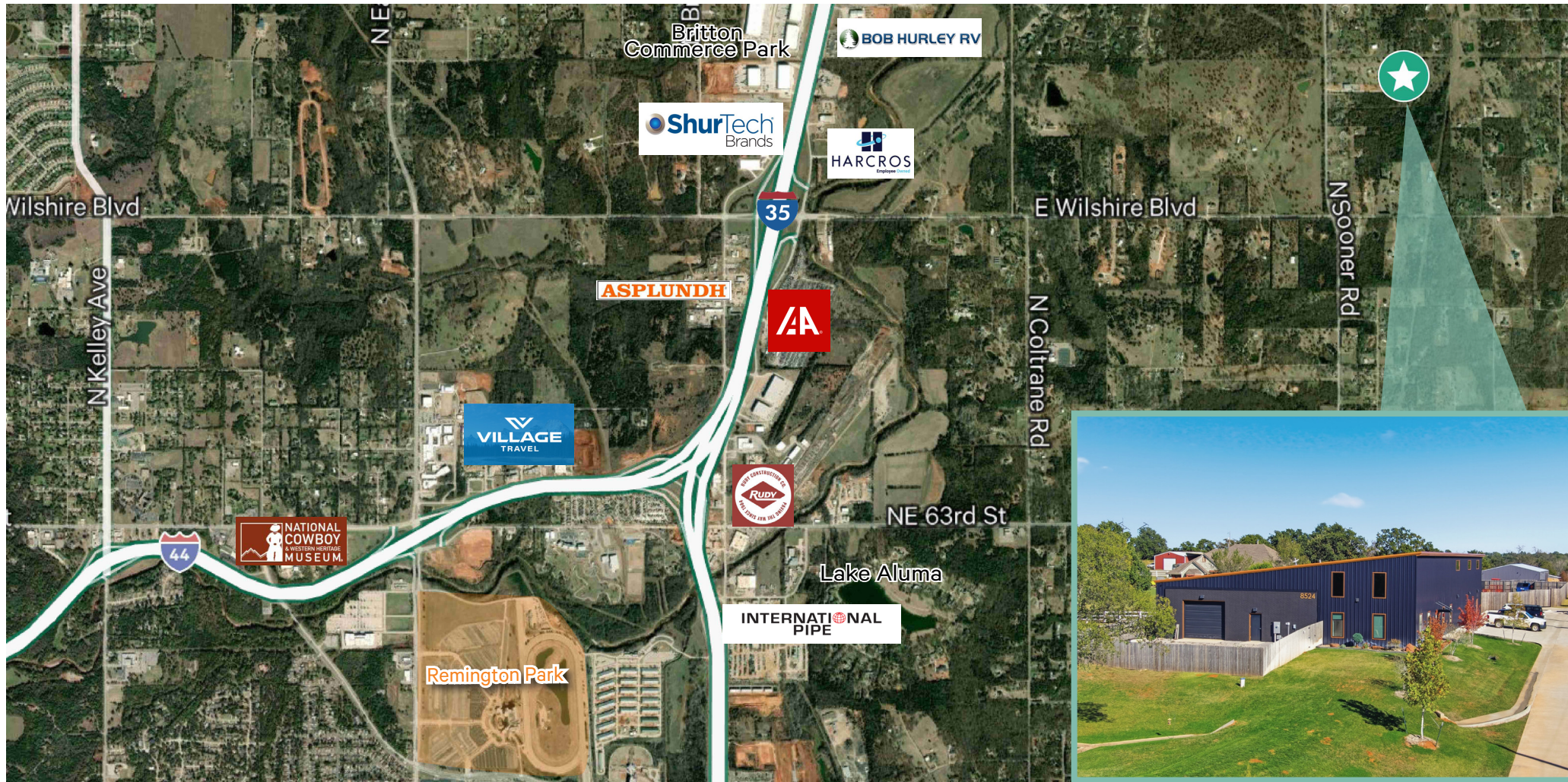
© 2025 CBRE, Inc. All rights reserved. This information has been obtained from sources believed reliable, but has not been verified for accuracy or completeness. You should conduct a careful, independent investigation of the property and verify all information. Any reliance on this information is solely at your own risk. CBRE and the CBRE logo are service marks of CBRE, Inc. All other marks displayed on this document are the property of their respective owners, and the use of such logos does not imply any affiliation with or endorsement of CBRE. Photos herein are the property of their respective owners. Use of these images without the express written consent of the owner is prohibited.

www.cbre.com/oklahomacity



For Lease | Warehouse with Yard

CBRE



Lease Rate: \$12.00 PSF NNN

Jason Hammock, SIOR, CCIM
First Vice President
+1 405 315 0725
jason.hammock@cbre.com

Caitlin Mazaheri, SIOR, CCIM
Vice President
+1 405 413 2315
caitlin.mazaheri@cbre.com

Joe Summers
Senior Associate
+1 405 831 6851
joe.summers@cbre.com

Scan QR Code
for Additional
Property Photos

