

RETAIL PROPERTY // FOR LEASE

FREE-STANDING 2,500 SF RETAIL BUILDING WITH DRIVE-THRU

31062 ECORSE RD
ROMULUS, MI 48174



- Zoned C2 General Business
- Ideal for Retail, Office, or Service
- High-Visibility Property
- Conveniently located near I-94

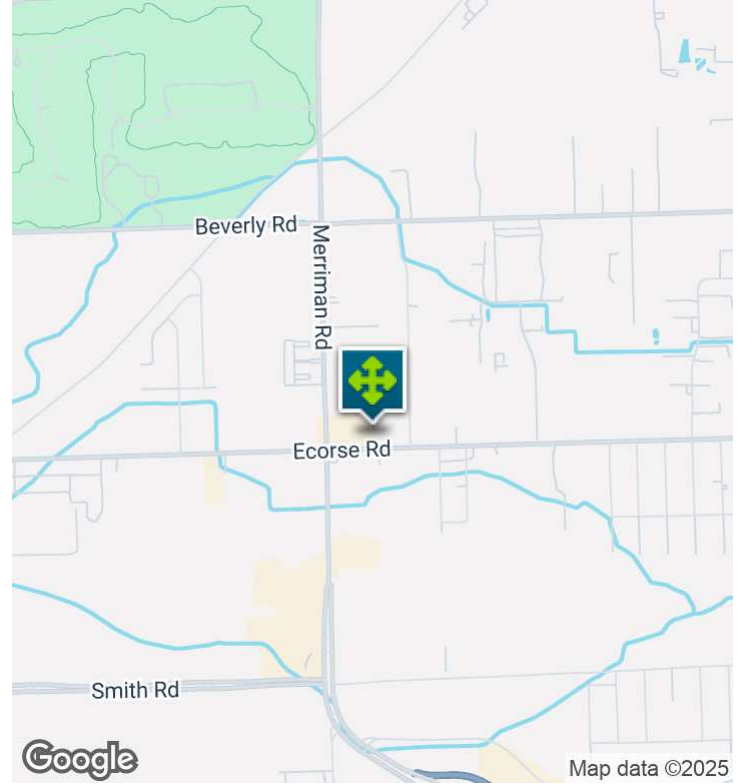


P.A. COMMERCIAL
Corporate & Investment Real Estate

26555 Evergreen Road, Suite 1500
Southfield, MI 48076
248.358.0100
pacommercial.com

We obtained the information above from sources we believe to be reliable. However, we have not verified its accuracy and make no guarantee, warranty or representation about it. It is submitted subject to the possibility of errors, omissions, change of price, rental or other conditions, prior sale, lease or financing, or withdrawal without notice. We include projections, opinions, assumptions or estimates for example only, and they may not represent current, past or future performance of the property. You and your tax and legal advisors should conduct your own investigation of the property and transaction.

EXECUTIVE SUMMARY



Lease Rate	\$3,000.00 PER MONTH (GROSS)
-------------------	-------------------------------------

OFFERING SUMMARY

Building Size:	2,500 SF
Available SF:	2,500 SF
Lot Size:	1.35 Acres
Year Built:	1965
Zoning:	C2
Market:	Airport District
Submarket:	West wayne

PROPERTY OVERVIEW

Welcome to 31062 Ecorse Rd., a versatile property zoned C2 General Business, ideally located in the thriving community of Romulus, this high-visibility location offers a 40-car parking lot, making it perfect for retail or restaurant. This prime location was originally a bank; built to higher quality standards.

LOCATION OVERVIEW

This property is located in a vibrant community with easy access to major highways, making it ideal for commuters. The area offers a mix of residential and commercial properties, along with nearby shopping centers, parks, and recreational facilities. Local schools and public services are also readily available, making the neighborhood particularly appealing to families.

PROPERTY HIGHLIGHTS

- Zoned C2 General Business
- Ideal for Retail, Office, or Service
- High-Visibility Property
- Conveniently located near I-94



P.A. COMMERCIAL
Corporate & Investment Real Estate

Noor Kalasho ASSOCIATE
D: 248.801.9499 | C: 248.225.3333
noor@pacommercial.com

Dan Blugerman, CCIM SENIOR ASSOCIATE
D: 248.987.5418 | C: 248.987.5418
dan@pacommercial.com

31062 ECORSE RD, ROMULUS, MI 48174 // FOR LEASE

ADDITIONAL PHOTOS



P.A. COMMERCIAL
Corporate & Investment Real Estate

Noor Kalasho ASSOCIATE
D: 248.801.9499 | C: 248.225.3333
noor@pacommercial.com

Dan Blugerman, CCIM SENIOR ASSOCIATE
D: 248.987.5418 | C: 248.987.5418
dan@pacommercial.com

We obtained the information above from sources we believe to be reliable. However, we have not verified its accuracy and make no guarantee, warranty or representation about it. It is submitted subject to the possibility of errors, omissions, change of price, rental or other conditions, prior sale, lease or financing, or withdrawal without notice. We include projections, opinions, assumptions or estimates for example only, and they may not represent current, past or future performance of the property. You and your tax and legal advisors should conduct your own investigation of the property and transaction.

31062 ECORSE RD, ROMULUS, MI 48174 // FOR LEASE

ADDITIONAL PHOTOS



P.A. COMMERCIAL
Corporate & Investment Real Estate

Noor Kalasho ASSOCIATE
D: 248.801.9499 | C: 248.225.3333
noor@pacommercial.com

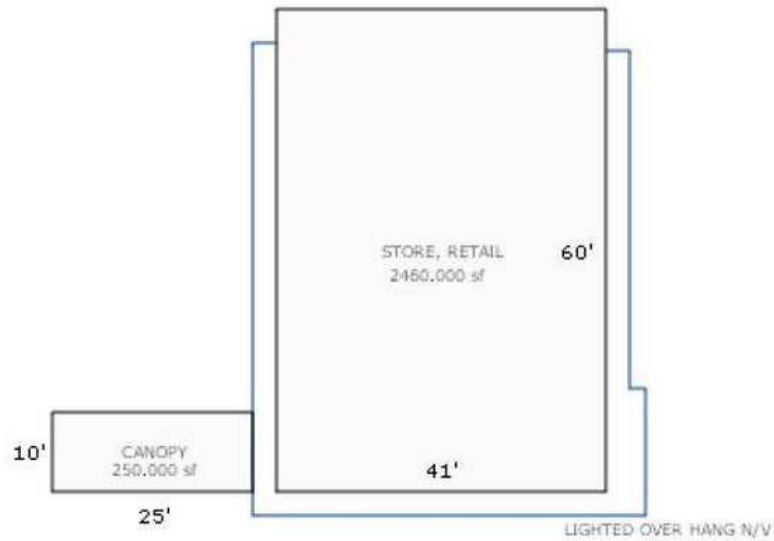
Dan Blugerman, CCIM SENIOR ASSOCIATE
D: 248.987.5418 | C: 248.987.5418
dan@pacommercial.com

We obtained the information above from sources we believe to be reliable. However, we have not verified its accuracy and make no guarantee, warranty or representation about it. It is submitted subject to the possibility of errors, omissions, change of price, rental or other conditions, prior sale, lease or financing, or withdrawal without notice. We include projections, opinions, assumptions or estimates for example only, and they may not represent current, past or future performance of the property. You and your tax and legal advisors should conduct your own investigation of the property and transaction.

31062 ECORSE RD, ROMULUS, MI 48174 // FOR LEASE

SITE PLANS

Image/Sketch for Parcel: 80 007 01 0912 000



JEH 7/16/09

Sketch by Apex Medina™

Copyright © 2025 [BS&A Software, Inc.](#)



P.A. COMMERCIAL
Corporate & Investment Real Estate

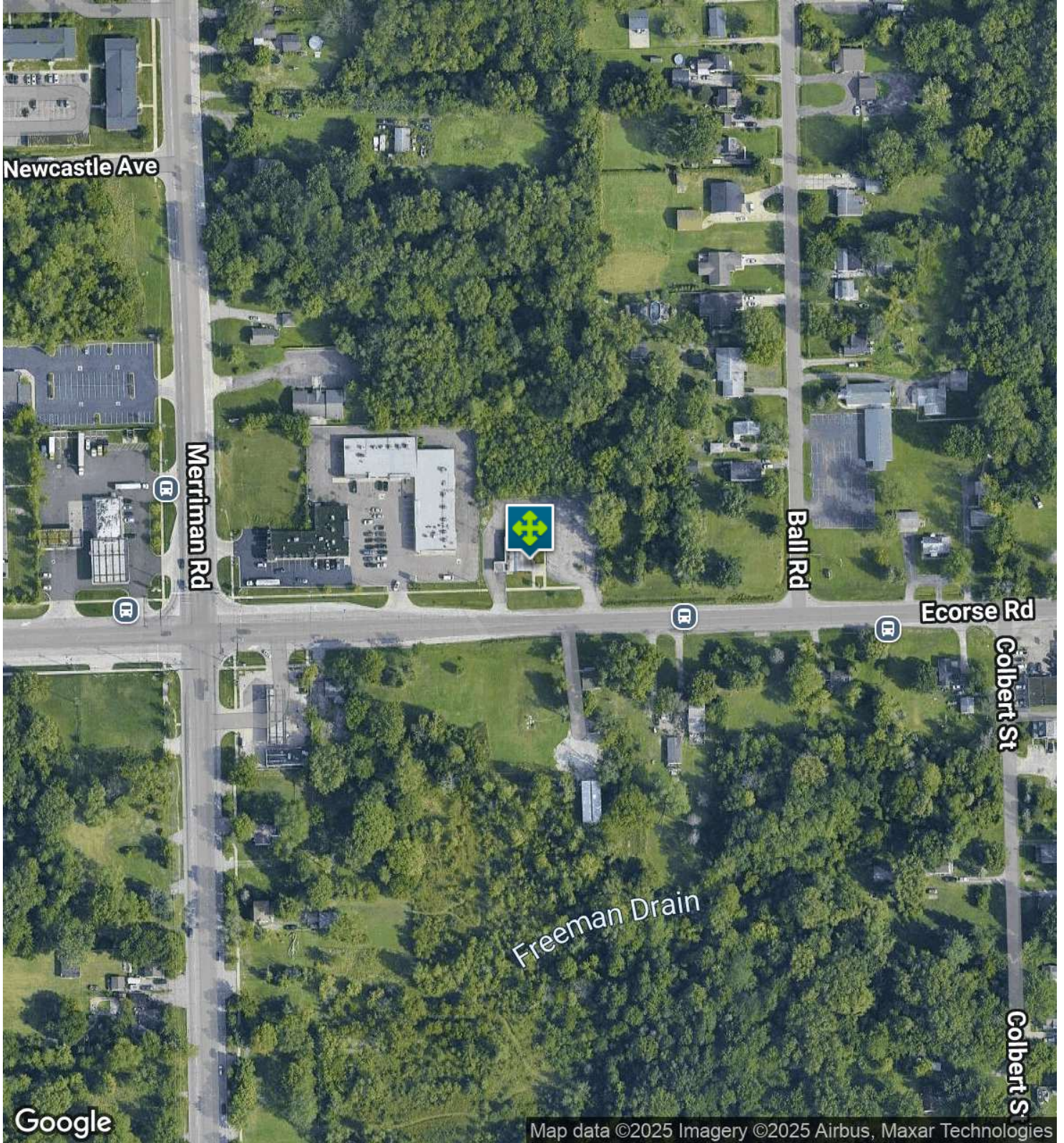
Noor Kalasho ASSOCIATE
D: 248.801.9499 | C: 248.225.3333
noor@pacommercial.com

Dan Blugerman, CCIM SENIOR ASSOCIATE
D: 248.987.5418 | C: 248.987.5418
dan@pacommercial.com

We obtained the information above from sources we believe to be reliable. However, we have not verified its accuracy and make no guarantee, warranty or representation about it. It is submitted subject to the possibility of errors, omissions, change of price, rental or other conditions, prior sale, lease or financing, or withdrawal without notice. We include projections, opinions, assumptions or estimates for example only, and they may not represent current, past or future performance of the property. You and your tax and legal advisors should conduct your own investigation of the property and transaction.

31062 ECORSE RD, ROMULUS, MI 48174 // FOR LEASE

AERIAL MAP



Noor Kalasho ASSOCIATE
D: 248.801.9499 | C: 248.225.3333
noor@pacommercial.com

Dan Blugerman, CCIM SENIOR ASSOCIATE
D: 248.987.5418 | C: 248.987.5418
dan@pacommercial.com

We obtained the information above from sources we believe to be reliable. However, we have not verified its accuracy and make no guarantee, warranty or representation about it. It is submitted subject to the possibility of errors, omissions, change of price, rental or other conditions, prior sale, lease or financing, or withdrawal without notice. We include projections, opinions, assumptions or estimates for example only, and they may not represent current, past or future performance of the property. You and your tax and legal advisors should conduct your own investigation of the property and transaction.

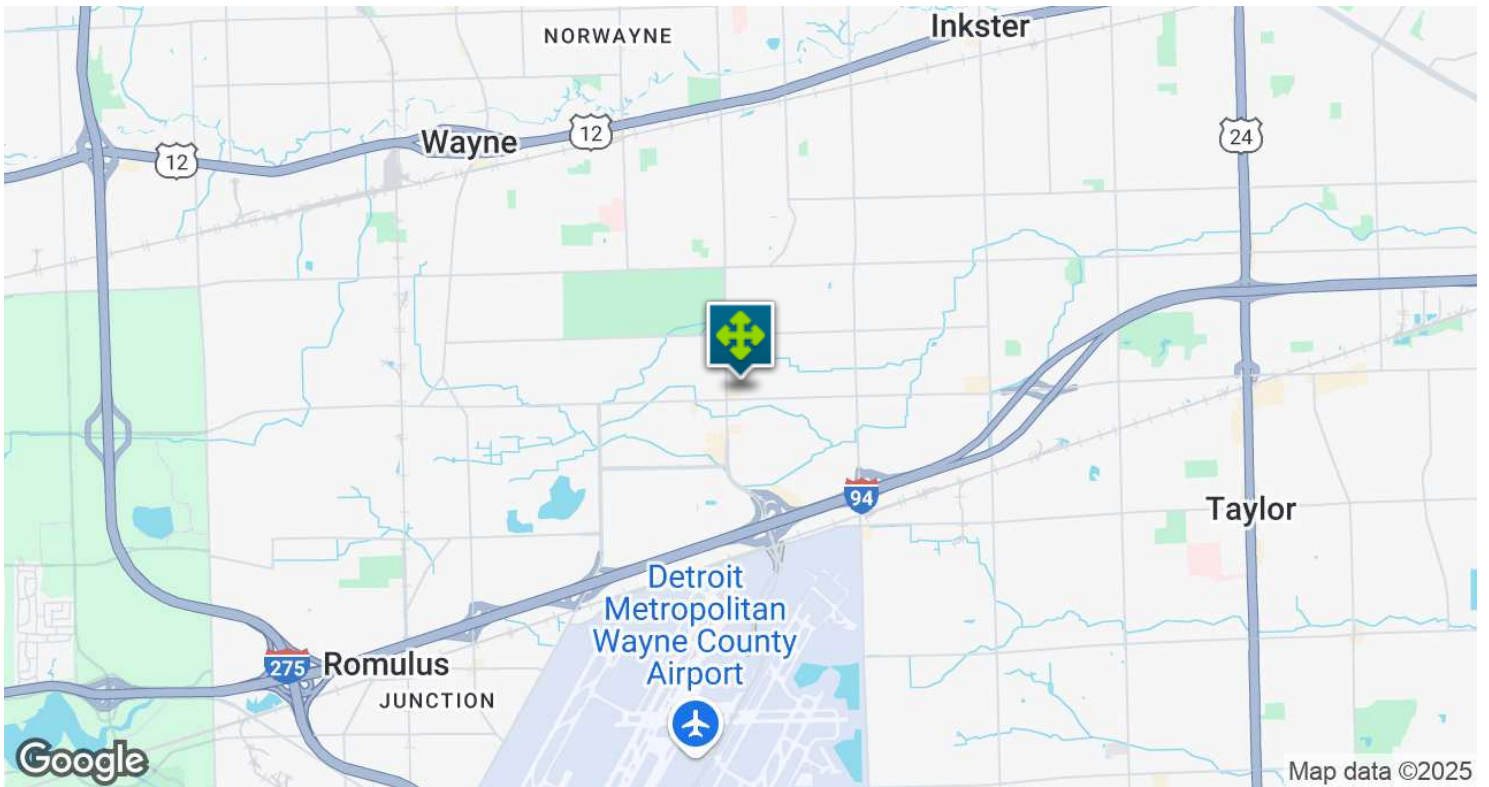
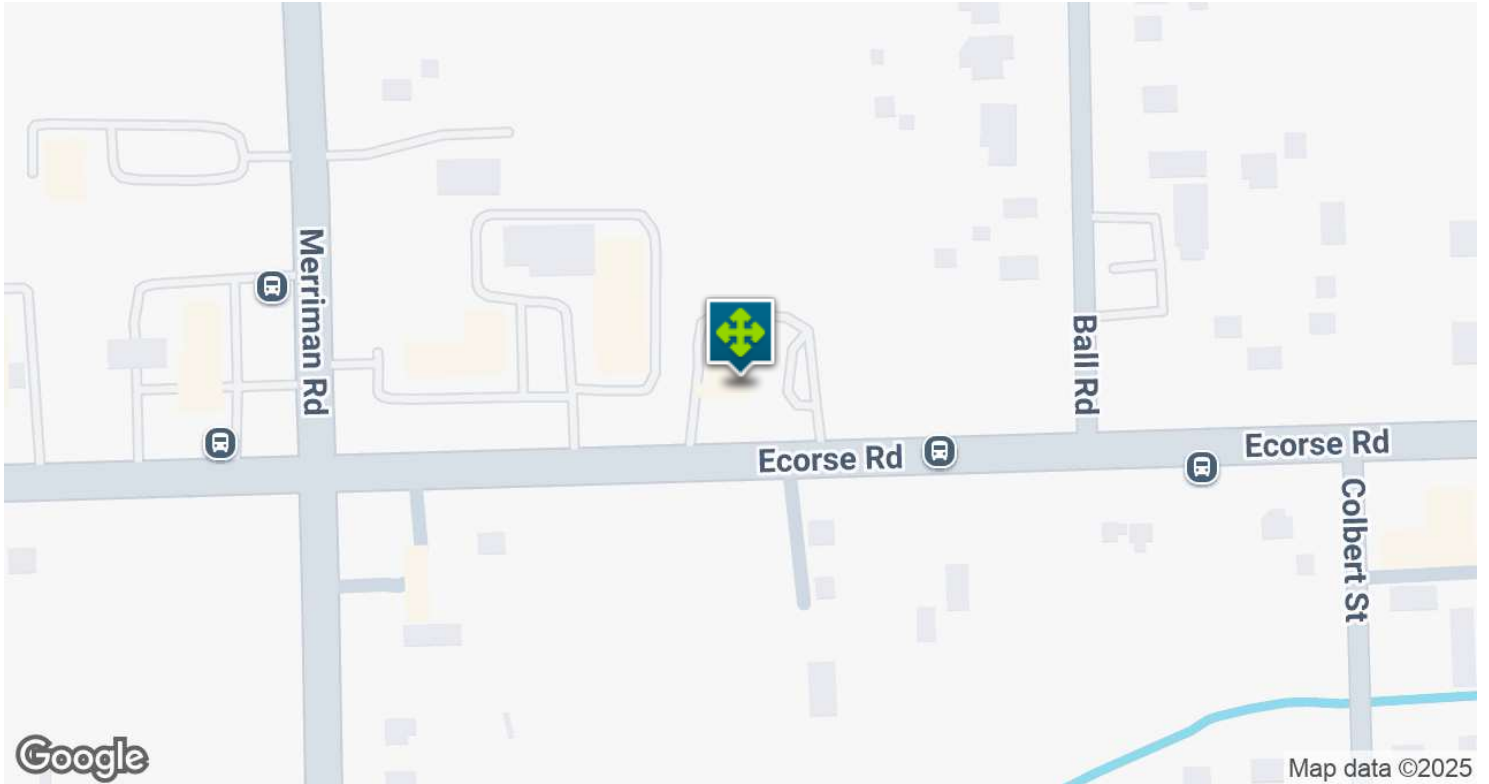
31062 ECORSE RD, ROMULUS, MI 48174 // FOR LEASE

RETAILER MAP



31062 ECORSE RD, ROMULUS, MI 48174 // FOR LEASE

LOCATION MAP

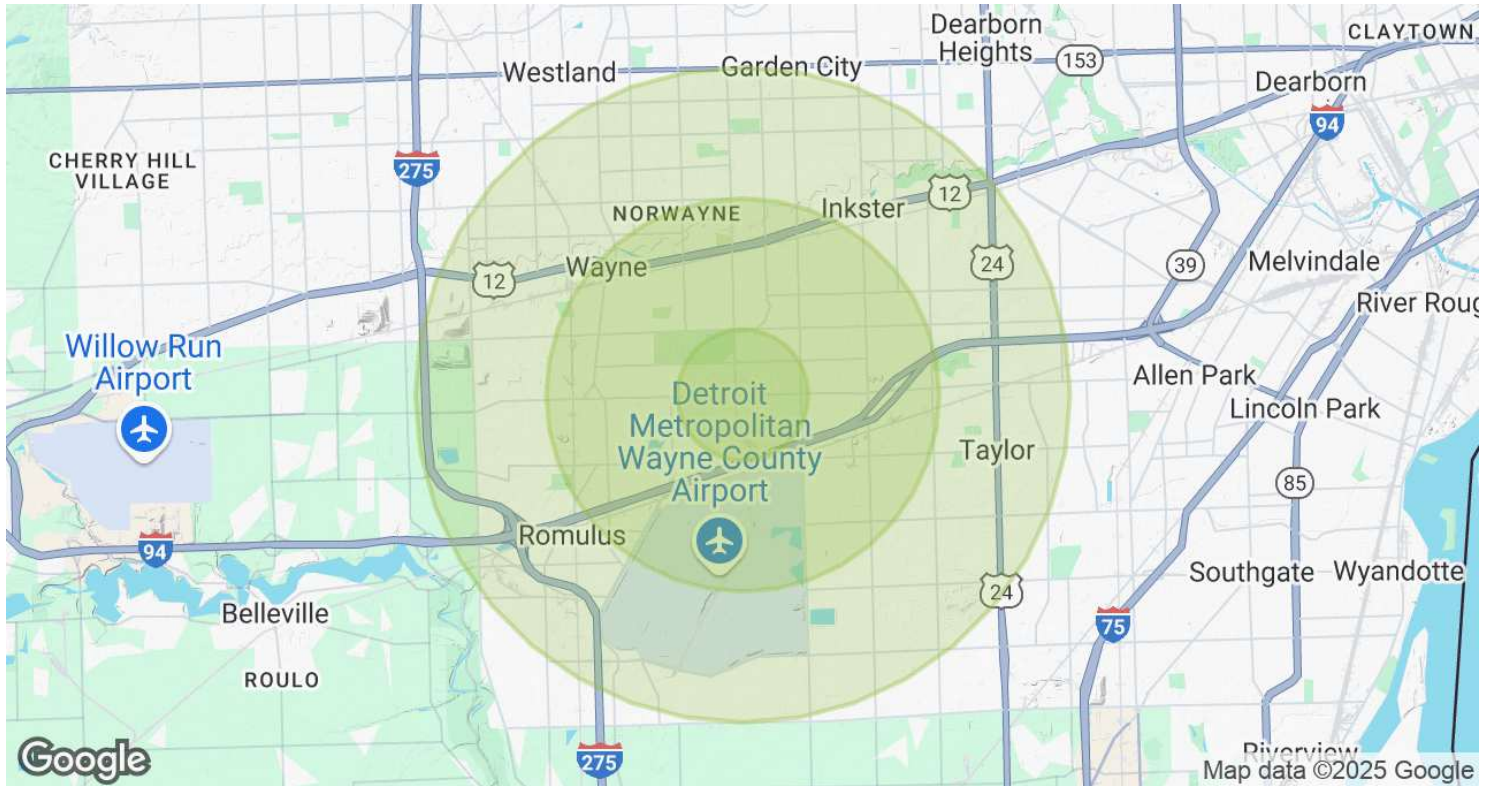


Noor Kalasho ASSOCIATE
D: 248.801.9499 | C: 248.225.3333
noor@pacommercial.com

Dan Blugerman, CCIM SENIOR ASSOCIATE
D: 248.987.5418 | C: 248.987.5418
dan@pacommercial.com

We obtained the information above from sources we believe to be reliable. However, we have not verified its accuracy and make no guarantee, warranty or representation about it. It is submitted subject to the possibility of errors, omissions, change of price, rental or other conditions, prior sale, lease or financing, or withdrawal without notice. We include projections, opinions, assumptions or estimates for example only, and they may not represent current, past or future performance of the property. You and your tax and legal advisors should conduct your own investigation of the property and transaction.

DEMOGRAPHICS MAP & REPORT



POPULATION	1 MILE	3 MILES	5 MILES
Total Population	1,533	45,819	172,966
Average Age	40	39	40
Average Age (Male)	40	38	38
Average Age (Female)	40	40	41

HOUSEHOLDS & INCOME	1 MILE	3 MILES	5 MILES
Total Households	661	18,361	69,066
# of Persons per HH	2.3	2.5	2.5
Average HH Income	\$73,518	\$68,140	\$75,647
Average House Value	\$170,400	\$146,066	\$170,983

Demographics data derived from AlphaMap

31062 ECORSE RD, ROMULUS, MI 48174 // FOR LEASE

CONTACT US



FOR MORE INFORMATION, PLEASE CONTACT:



Noor Kalasho

ASSOCIATE

D: 248.801.9499

C: 248.225.3333

noor@pacommercial.com



Dan Blugerman, CCIM

SENIOR ASSOCIATE

D: 248.987.5418

C: 248.987.5418

dan@pacommercial.com

P.A. Commercial

26555 Evergreen Road, Suite 1500

Southfield, MI 48076

P: 248.358.0100

F: 248.358.5300

pacommercial.com

Follow Us!



We obtained the information above from sources we believe to be reliable. However, we have not verified its accuracy and make no guarantee, warranty or representation about it. It is submitted subject to the possibility of errors, omissions, change of price, rental or other conditions, prior sale, lease or financing, or withdrawal without notice. We include projections, opinions, assumptions or estimates for example only, and they may not represent current, past or future performance of the property. You and your tax and legal advisors should conduct your own investigation of the property and transaction.