

MEDICAL OFFICE FOR LEASE

LANDMARK MEDICAL CENTER

5351 South Roslyn Street, Greenwood Village, CO

BUILDING DETAILS

SUITE	101
AVAILABLE SF	2,552 SF
BASE RENT (NNN)	\$36.50
ESTIMATED EXPENSES	\$14.00
AVAILABLE	Now



HIGHLIGHTS

- ▶ 5 Exam Rooms & 3 Offices on Glass
- ▶ Kitchenette, Reception, and Admin Space
- ▶ Best Location in the Building – first floor off lobby
- ▶ Ample On-site Parking
- ▶ Floor to Ceiling Windows
- ▶ Class A Medical & Professional Office Building

[View Highlight Video](#)

DESCRIPTION

Class A medical office for lease with an abundance of amenities and ideal location. The premises features 5 exam rooms plus 3 private offices with floor to ceiling windows, kitchen, and storage. The spacious reception has ample room for front office staff, administration, and waiting areas. Strategically positioned off the building lobby, the location couldn't be better. Not to mention the restaurants and coffee shops that are steps away in the Landmark shopping district. With plenty on-site parking and monument signage you will not find a better medical office for you and your clients.



Laura Frenkel

EMAIL lfrenkel@resoluteinv.com

PHONE 303.345.0347

WEBSITE www.resoluteinv.com

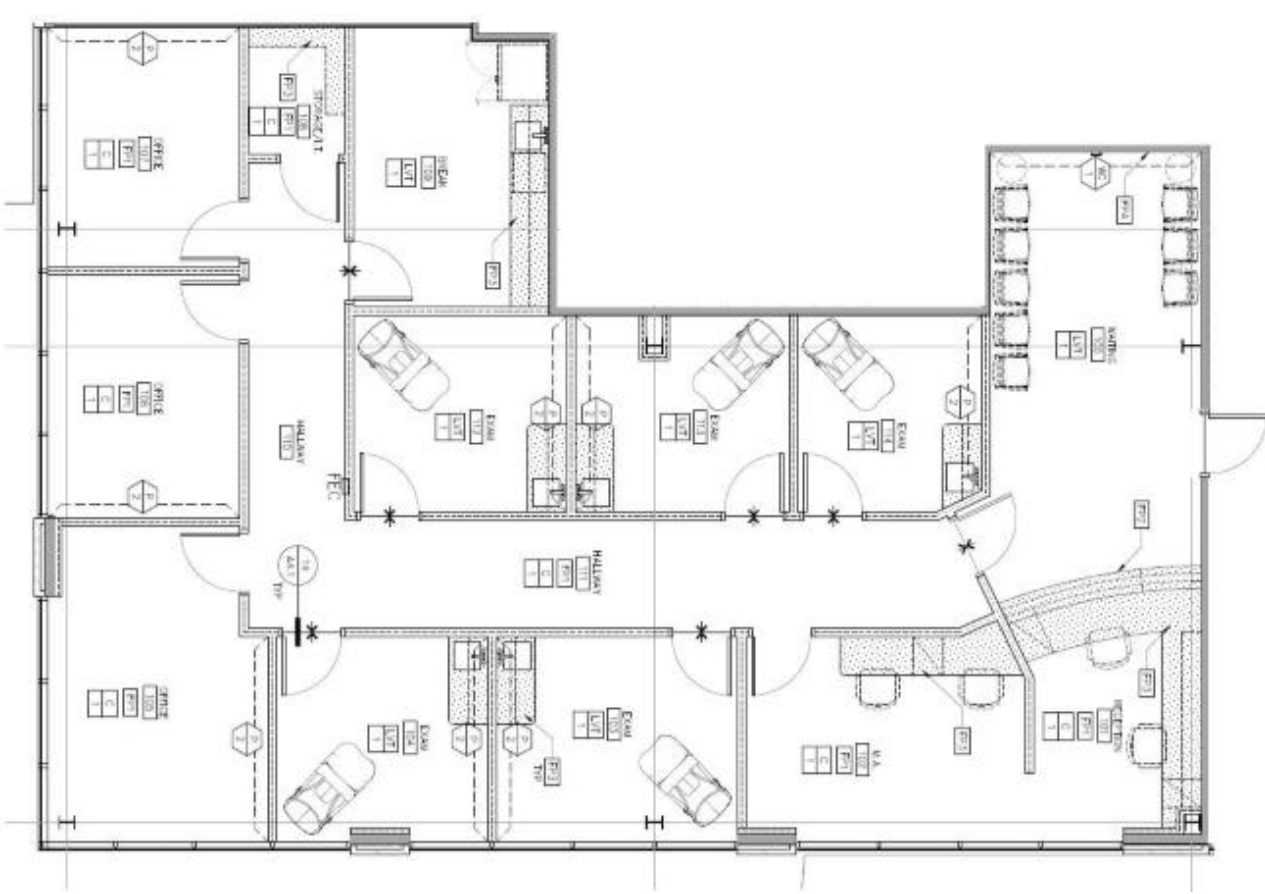


MEDICAL OFFICE FOR LEASE

LANDMARK MEDICAL CENTER

5351 South Roslyn Street, Greenwood Village, CO

FLOOR PLAN



Laura Frenkel

EMAIL lfrenkel@resoluteinv.com
PHONE 303.345.0347
WEBSITE www.resoluteinv.com

