



NEW FACADE RENDERING

Shoppes at Plaza Green

1117 Woodruff Road | Greenville, SC 29607



217-A E. Washington Street
Greenville, SC 29607
864 752 0300

Cortney Carter
1 864 752 0302
ccarter@collettre.com

Shoppes at Plaza Green

Property Overview

PROPERTY FEATURES

- ±28,860 SF retail available for lease
- ± 1,000 SF- 1,200 SF outparcel
- New tenants include **Rockler, PGA Tour Superstore, Home Sense** and **Sierra Trading Post!**
- Additional co-tenants include Old Navy, Party City and Torrid
- Located on Greenville's largest dining and entertainment corridor
- Signalized access via Woodruff Rd
- Multiple points of ingress/egress including access through Magnolia Park
- Signage opportunities with I-385 visibility
- Nearby retailers/restaurants include Costco, Panda Express, Nordstrom Rack, Cabelas, Carrabba's, Target, Academy Sports and Outdoors, Dick's Sporting Goods, Total Wine & More, World Market, REI, Loft, Ulta Beauty

DEMOGRAPHICS

	1 mile	3 miles	5 miles
Population	2,073	52,223	158,886
Total Employees	11,077	56,705	106,986
Avg. HH Income	\$67,983	\$89,468	\$90,197

TRAFFIC COUNTS

Woodruff Road	40,302 VPD
I-85	107,600 VPD
I-385	119,303 VPD



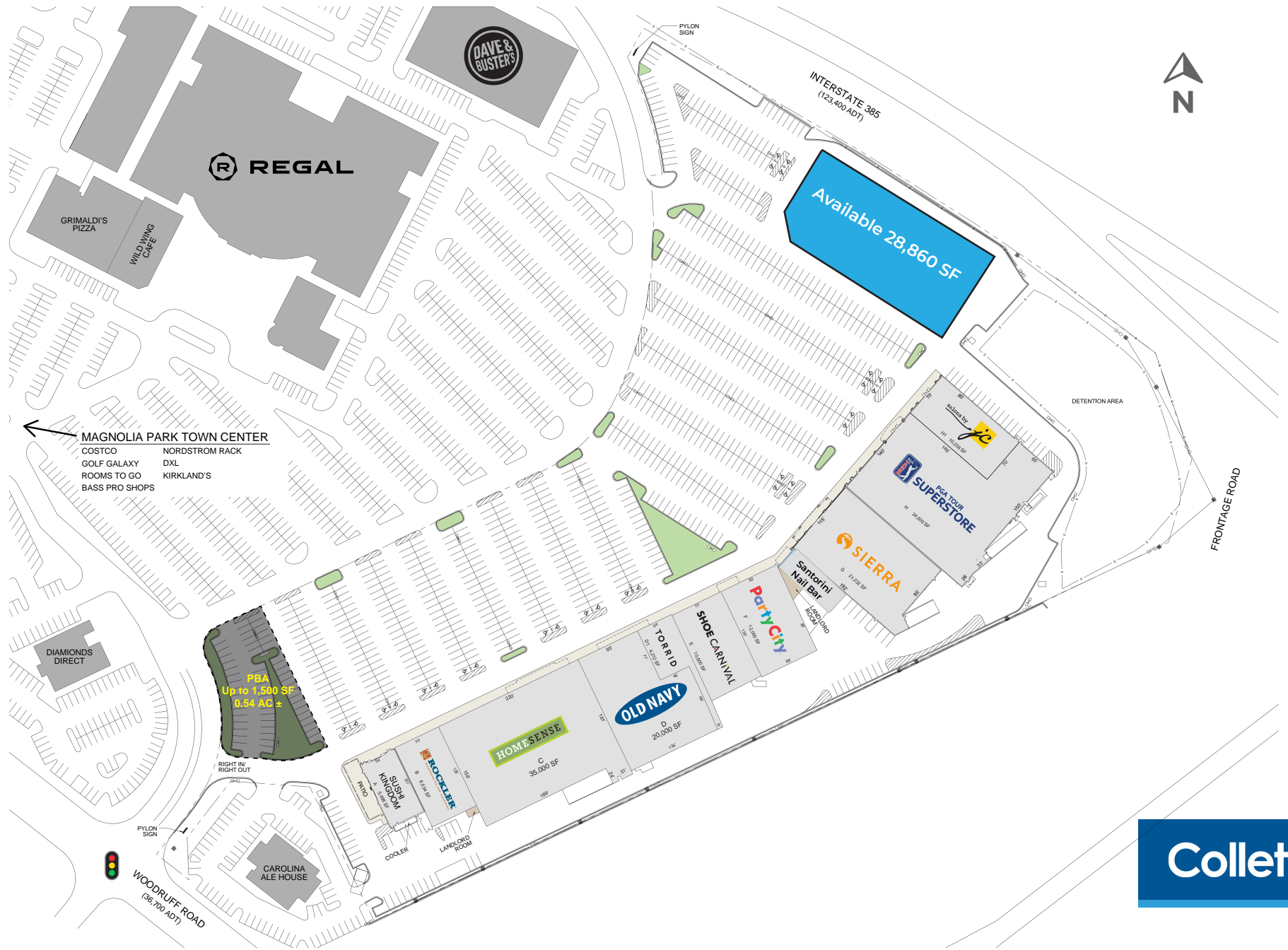
Shoppes at Plaza Green

New Building Facade & Pylon Renderings



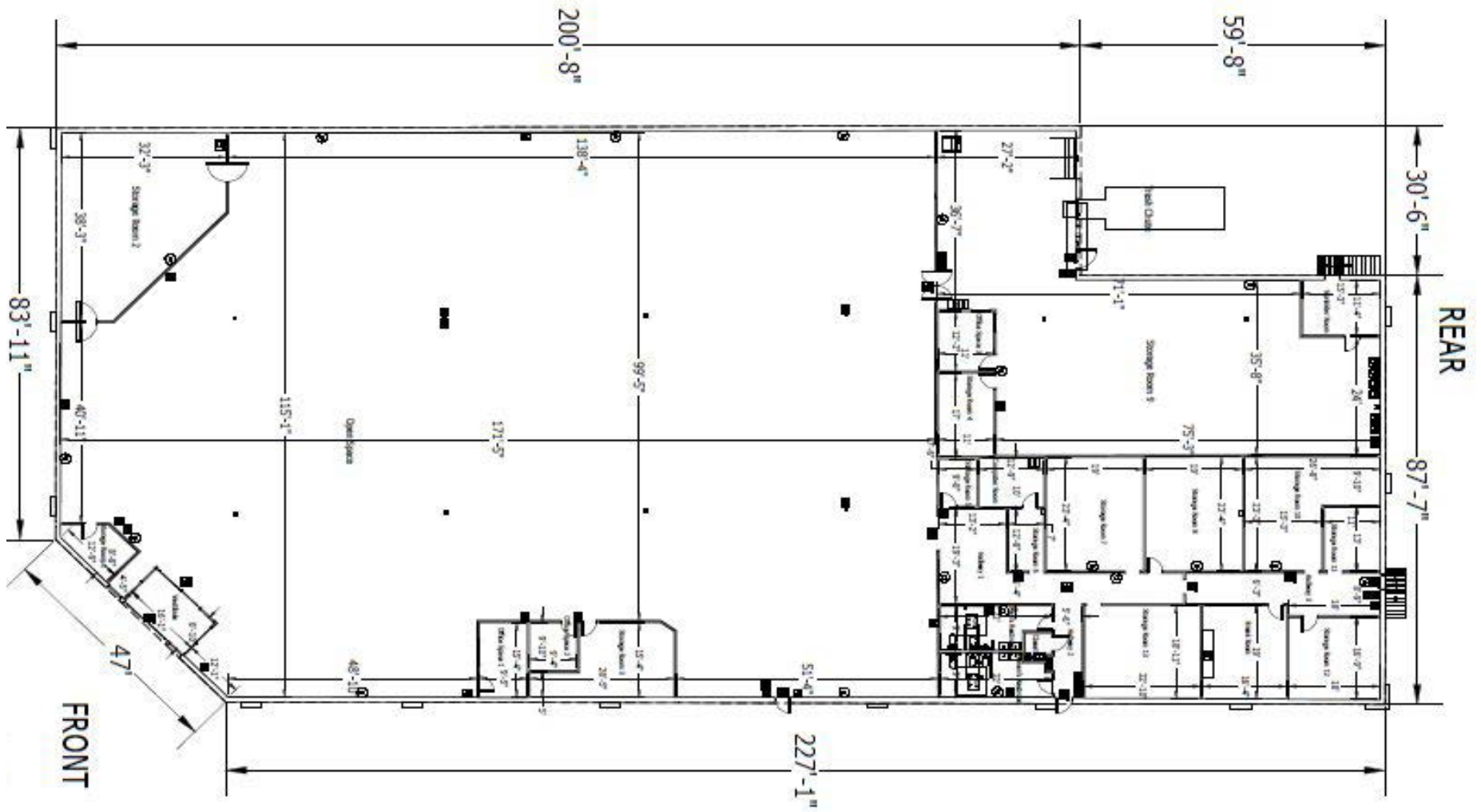
Shoppes at Plaza Green

Site Plan



Shoppes at Plaza Green

28,860 SF LOD



Shoppes at Plaza Green

Aerial



Magnolia Park

Cabela's DXL
NORDSTROM rack MENS APPAREL
GRIMALDI'S
Kirkland's THE WOODHOUSE day spa
Yard House

The Shops at Greenridge

BEST BUY DICK'S five HomeGoods
PETSMART Marshalls WORLD MARKET
ROSS Total Wine OFF BROADWAY SHOE WAREHOUSE
ULTA LOFT Bath & Body Works
YANKEE CANDLE Panera BARNES & NOBLE COLD STONE
CHICO'S BRAX SWOZIES BUFF CITY SOAP WHITE HOUSE BLACK MARKET

Shoppes at Plaza Green

OLD NAVY SIERRA SHOE CARNIVAL
ROCKLER PartyCity TORRID

Academy SPORTS & OUTDOORS
crumbl cookies TRADER JOE'S
AspenDental HAND & STONE

The Pointe

REI WHOLE FOODS new balance southern om ATHLETA Great Clips
blo DentalMark

Merovan Office Park

Brookfield Office Park