

AVISON
YOUNG



77 FEDERAL

NEW CONSTRUCTION

SPEC'D INTERIORS

AVAILABLE NOW

**AVISON
YOUNG**

// BUILDING FEATURES

BUILDING TYPE / CLASS A OFFICE

BUILDING SIZE / 89,909 SQUARE FEET
DEMISABLE TO 10,000 SQUARE FEET

POWER / 2500 AMP, 3 PHASE SERVICE & BACKUP POWER SERVICE

ELECTRICAL / RAISED FLOORS FOR WIRE & CABLE MANAGEMENT

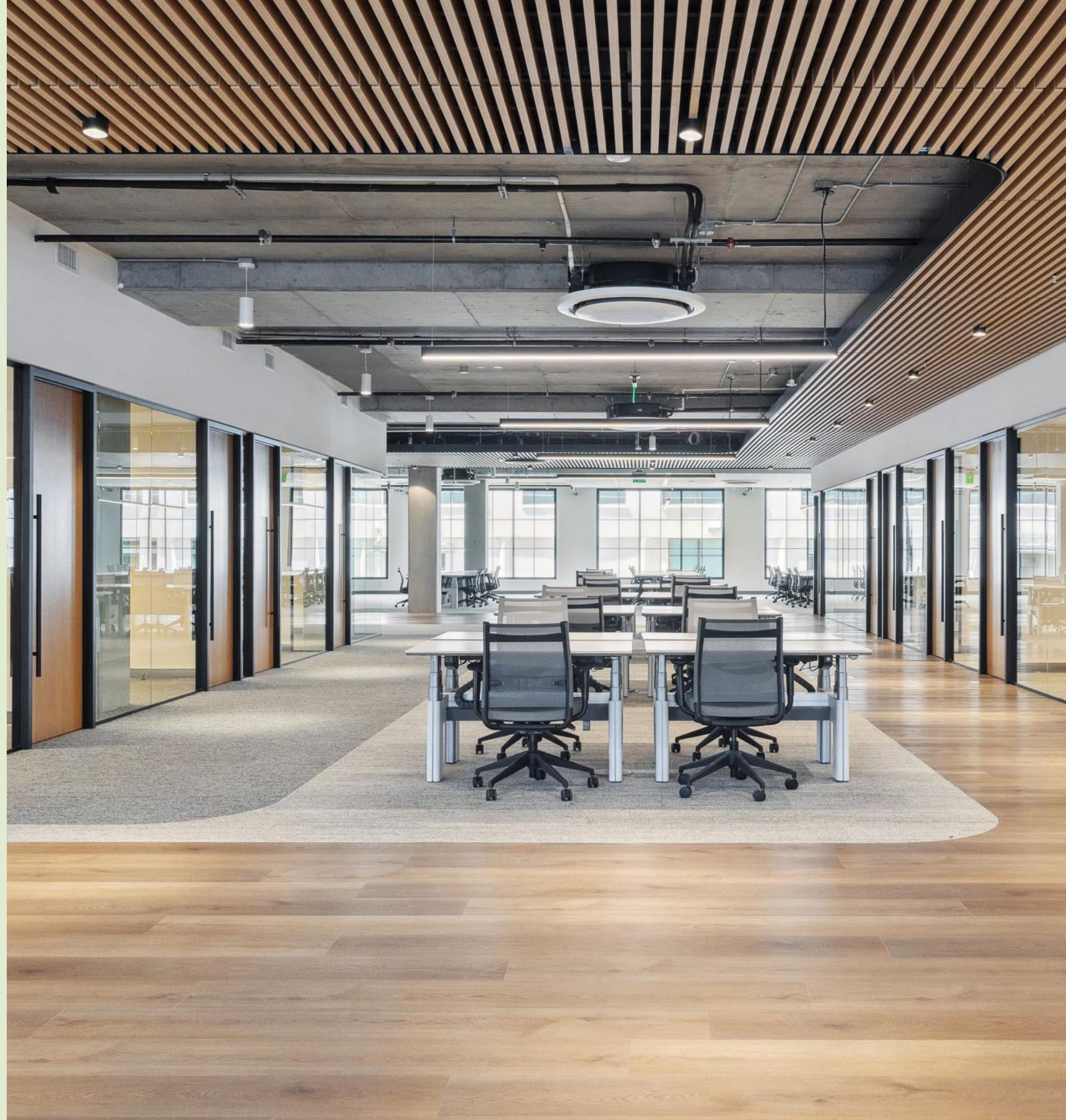
PARKING / 29 SECURED SPACES WITH EV INFRASTRUCTURE

INTERNET / COMCAST HIGH SPEED FIBER

FLOOR TO FLOOR HEIGHT / 1ST FLOOR 14'6"
2ND-4TH FLOOR 12'6" & 5TH FLOOR 13'4"

HVAC / SAMSUNG HEAT & COOLING SYSTEM WITH CUSTOMIZABLE
CLIMATE CONTROL (VRF) & MAKE UP AIR SYSTEM

MOVE-IN READY / STEELCASE SIT/STAND DESKS AVAILABLE

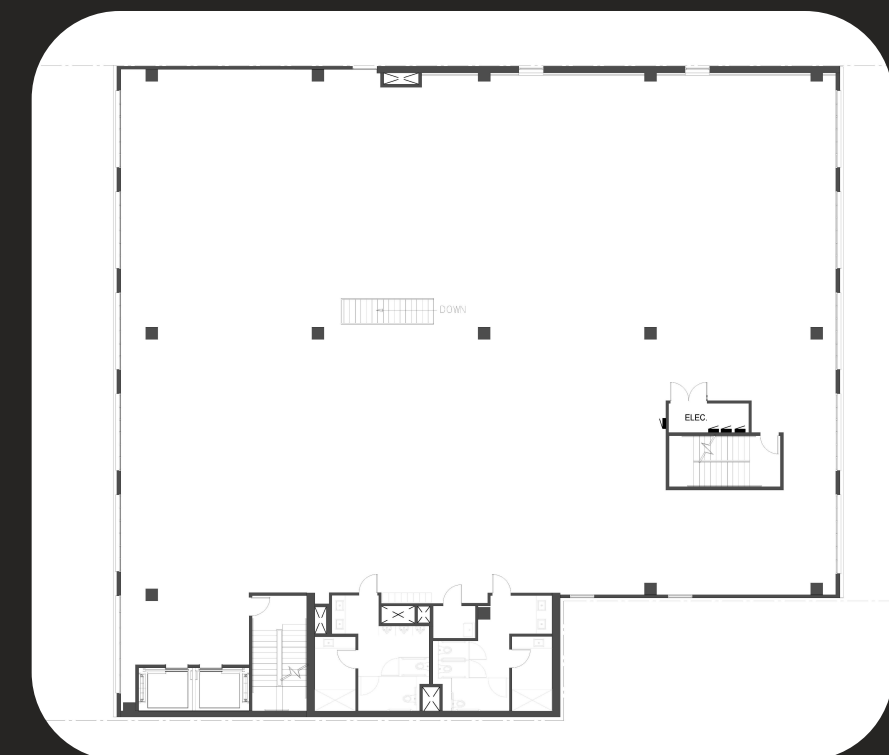




// FLOOR FEATURES

FLOOR 5 12,882 SQUARE FEET

- 11 huddle / conference rooms & 1 board room
- Interconnecting stairwell to the fourth floor
- Private showers

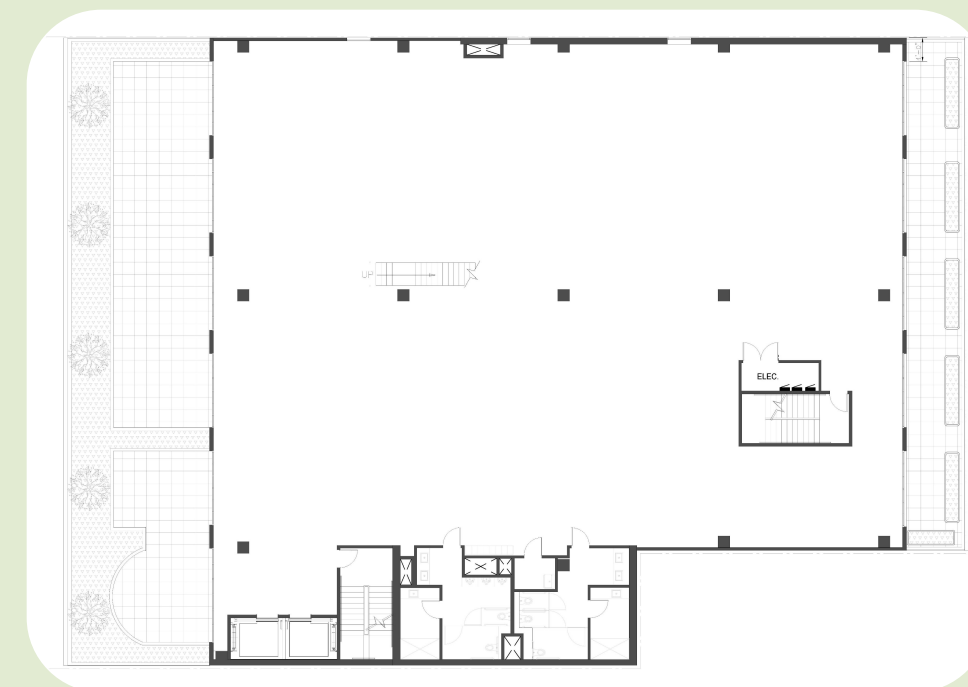




// FLOOR FEATURES

FLOOR 4 15,640 SQUARE FEET

- 2 private terraces on both sides of floor plate
- 7 huddle / conference rooms & 1 board room
- Interconnecting stairwell to the fifth floor
- Large kitchen and break area
- Private showers

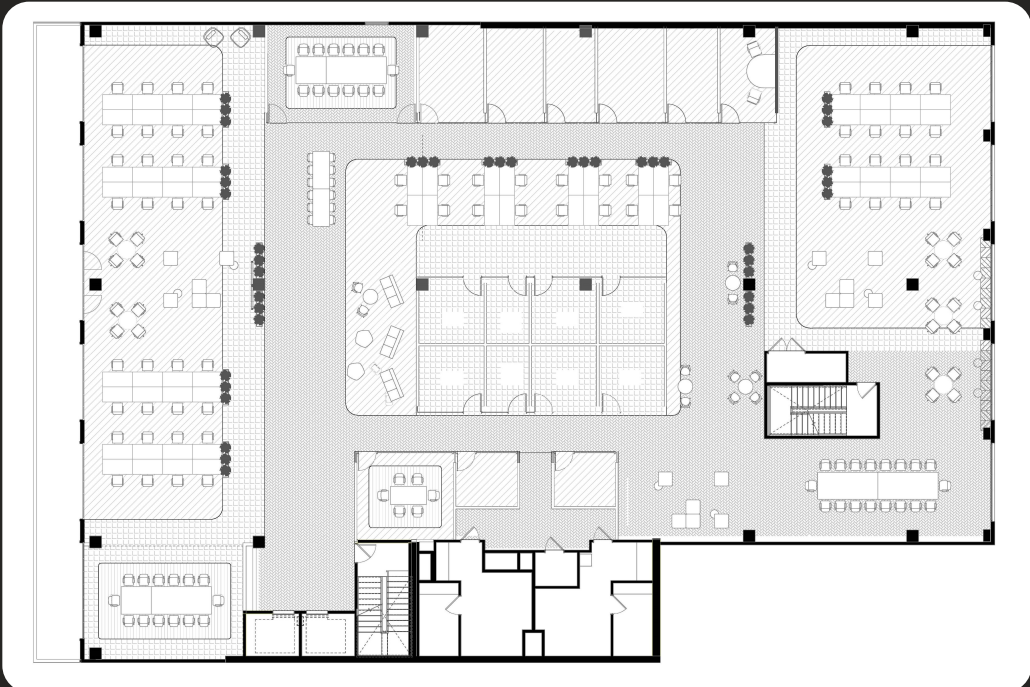




// FLOOR FEATURES

**FLOOR 3
17,643 SQUARE FEET**

- Private terrace facing Federal Street
- 16 huddle/conference rooms & 2 board rooms
- Large kitchen and break area
- Private showers

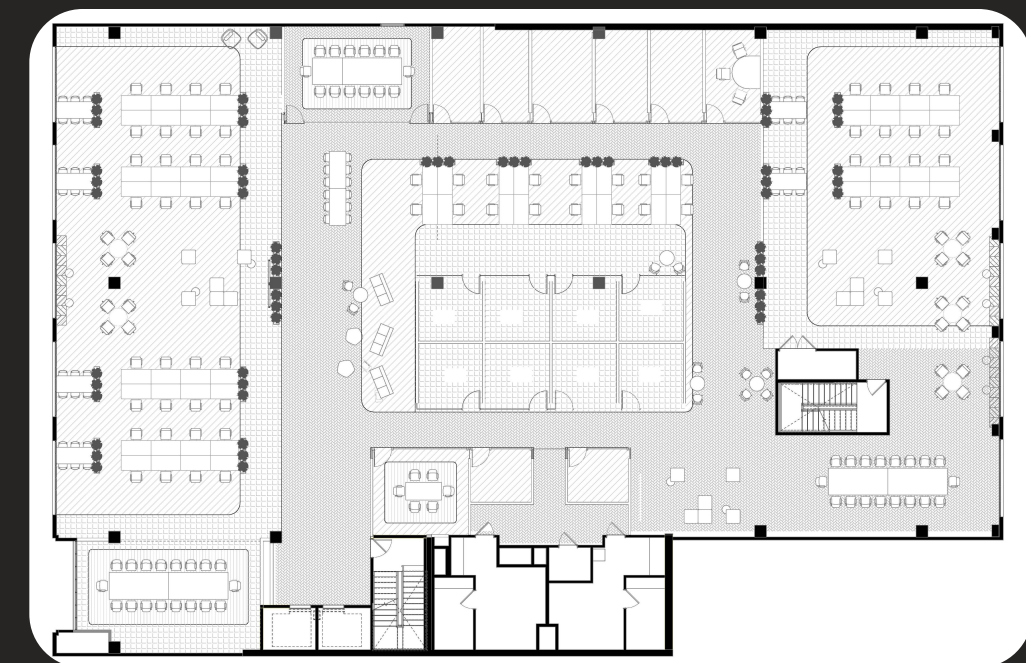




// FLOOR FEATURES

FLOOR 2 17,442 SQUARE FEET

- 17 huddle / conference rooms & 2 board rooms
- Large kitchen and break area
- Private showers

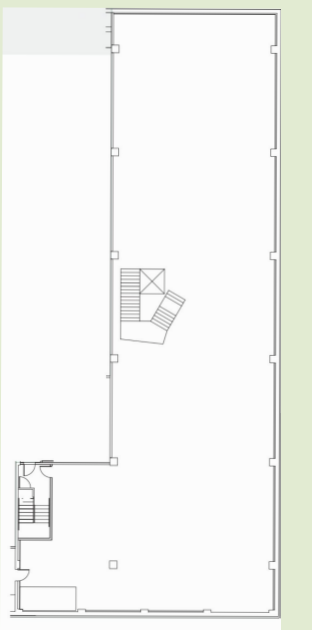
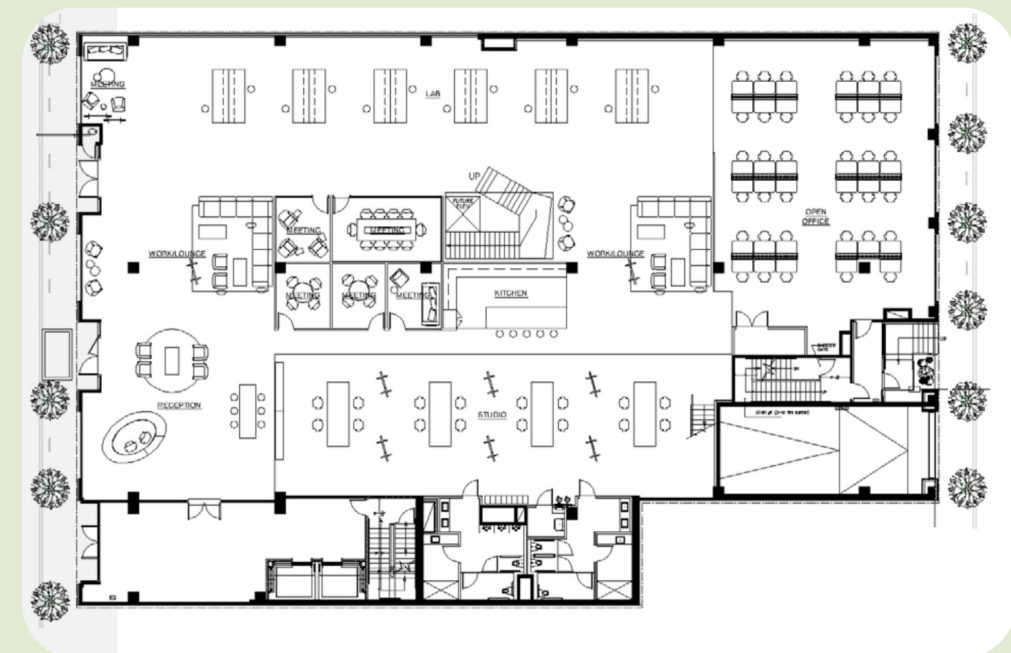




// FLOOR FEATURES

LOWER & FLOOR 1 26,303 SQUARE FEET

- Exclusive entrance on Federal Street
- Space that can be planned for all-hands, showroom, workshop, lab and supporting office functions
- Interconnecting stairwell to the basement level
- Private showers





TOYOTA VENTURES

South Park Commons

Circle Capital

Lightspeed

77 FEDERAL

Accel

DC VC

JAZ VENTURE PARTNERS

SAPPHIRE VENTURES

THOMVEST VENTURES

KLEINER PERKINS

// LOCAL AMENITIES

RESTAURANTS

- 01 / Movidá
- 02 / 21st Amendment
- 03 / Garaje
- 04 / Bird Box
- 05 / El Porteno
- 06 / Mercado
- 07 / Saison
- 08 / Underdog Cantina
- 09 / Thriller Social Club
- 10 / Kaiyo Rooftop
- 11 / Marlowe
- 12 / Cafe Okawari

HOTELS

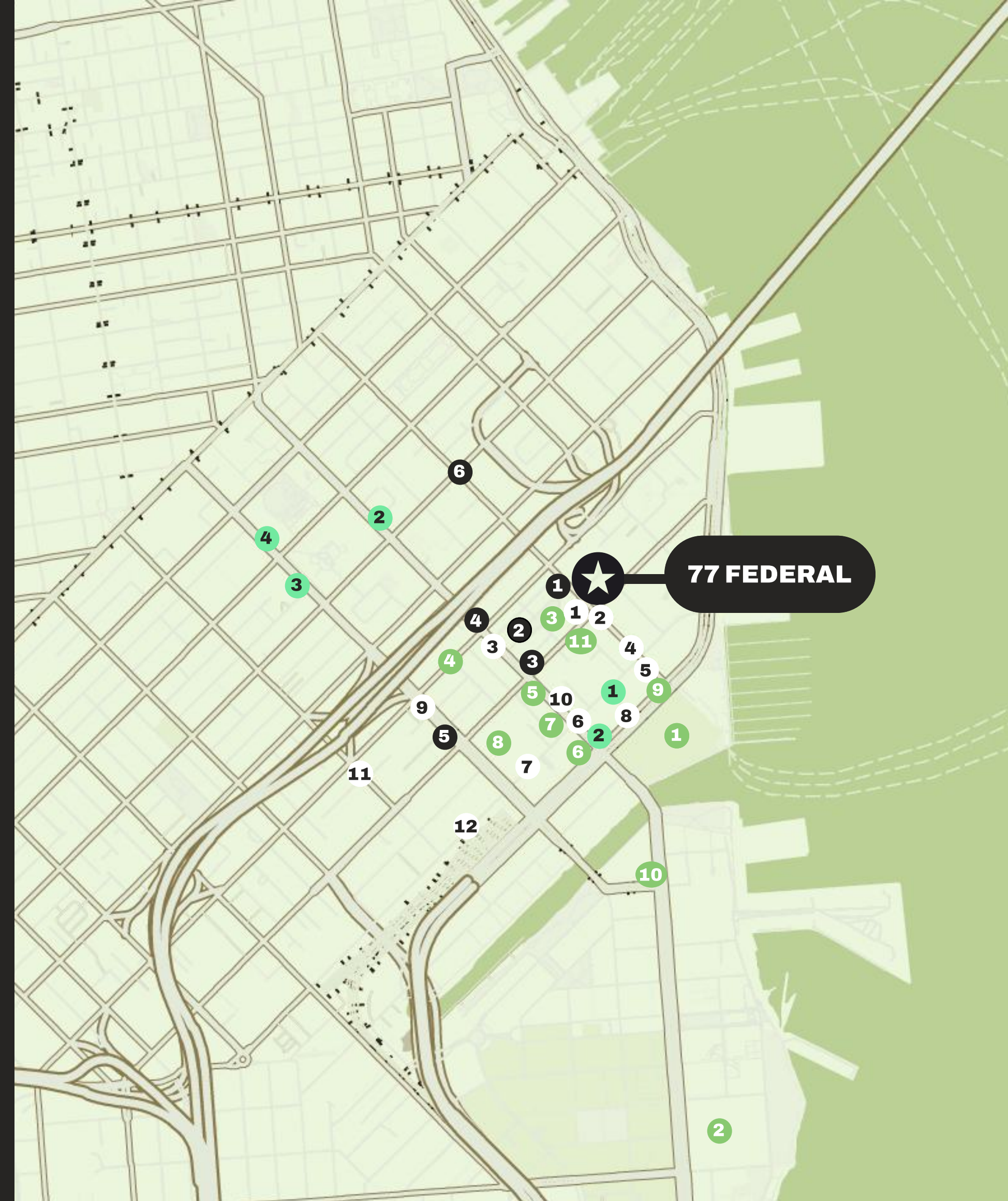
- 01 / Hotel VIA
- 02 / Hyatt Place
- 03 / The Clancy
- 04 / The W
- 05 / St. Regis

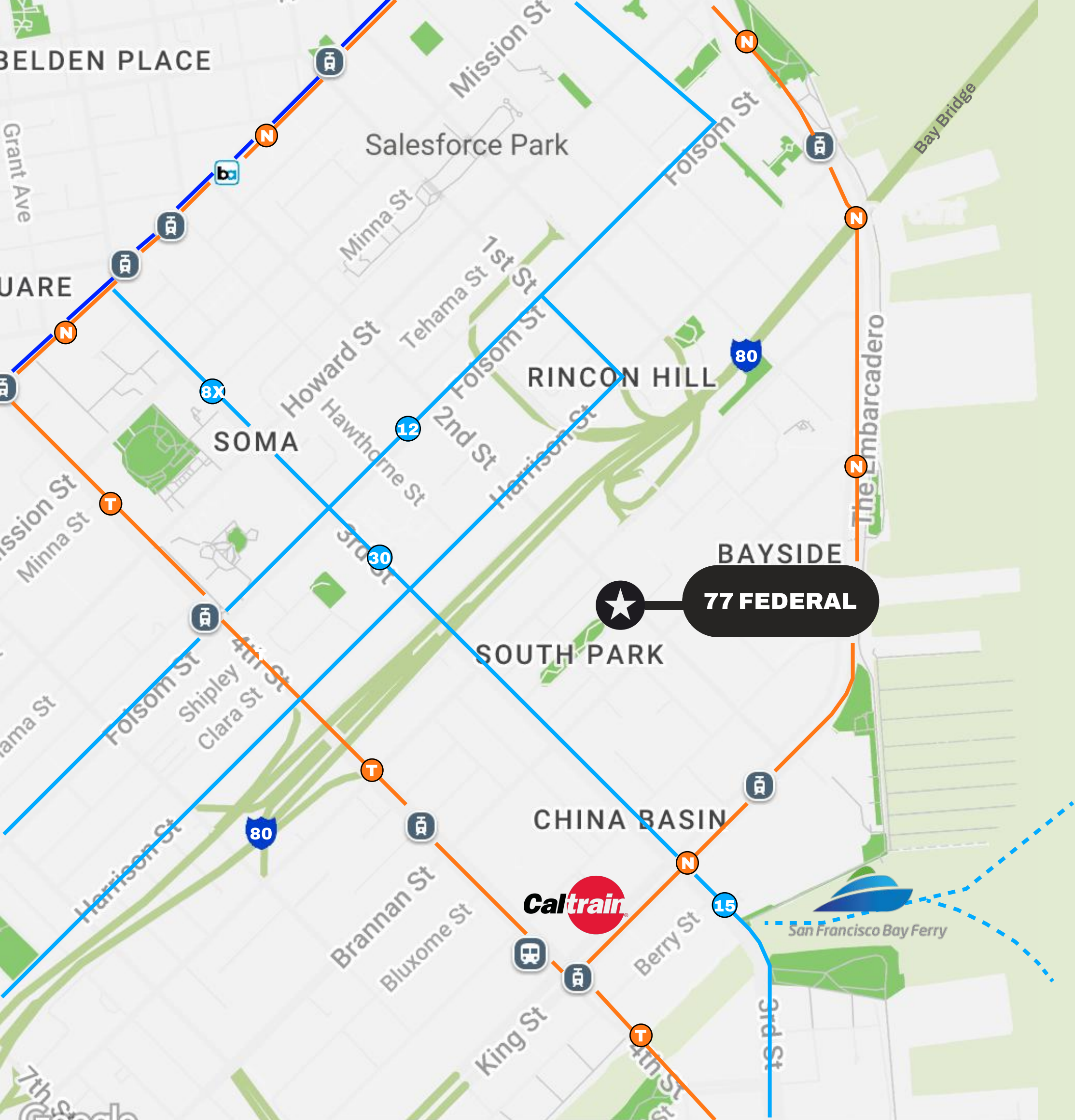
ENTERTAINMENT

- 01 / Oracle Park
- 02 / Chase Center
- 03 / JAX Vineyards
- 04 / Black Hammer Brewing
- 05 / Local Tap
- 06 / Lucky Strike
- 07 / Alchemist Bar & Lounge
- 08 / ROOFTOP 25
- 09 / MOMOs
- 10 / Cavana
- 11 / ROOH

COFFEE

- 01 / Blue Bottle
- 02 / Caffe Centro
- 03 / Golden Goat Coffee
- 04 / Flour & Branch
- 05 / Paper Son Coffee





// TRANSPORTATION



Close proximity to the I-80 and US 101



Close proximity to the 4th & King Station



Close proximity to Montgomery Station



Close proximity to many MUNI bus lines



Close proximity to Oracle Park Ferry Terminal

// CONTACT US

ROSS ROBINSON

(415) 203-1168

ross.robinson@avisonyoung.com

CA RE LIC #01414104

TIM HOGAN

(925) 639-6774

tim.hogan@avisonyoung.com

CA RE LIC #01375367

MARK MCGRANAHAN

(415) 533-5933

mark.mcgranahan@avisonyoung.com

CA RE LIC #01176912

BRIAN COPE

(415) 519-2454

brian.cope@avisonyoung.com

CA RE LIC #02049517



**AVISON
YOUNG**