

# Ridge Pike Plaza

3200 Ridge Pike Plaza  
Eagleville, PA 19403  
[www.cbre.com/allentown](http://www.cbre.com/allentown)



Eastern PA Availabilities

±2,000 SF In-line Space & PAD SITE Available For Ground Lease or For Sale

## Join Tenants:



## Property Details:

- + ±2,000 SF in-line space and Pad Site available for ground lease or for sale
- + ±6.09 Acres
- + Join Tenants Ollie's Bargain Outlet, U.S. Postal Service, Golden Nails & Spa, Great Clips, Dollar Tree
- + 5 Mile traffic counts are 18,762 VPD
- + Center is anchored by Dollar Tree and Ollie's Bargain Outlet
- + Located on Ridge Pike in Eagleville, PA other retail stores near by include: Domino's, Burger King, AutoZone, Dollar General, Advanced Auto Parts and Dunkin'.

## Contact Us

**Jody King**  
Senior Vice President  
+1 610 398 3384  
jody.king@cbre.com  
Licensed: PA

**Pam Hall**  
Associate  
+1 610 573 5341  
pamela.hall@cbre.com  
Licensed: PA

**CBRE, Inc.**  
1275 Glenlivet Drive,  
Allentown, PA 18106  
+1 610 398 6900  
Licensed Real Estate Broker



# Ridge Pike Plaza

3200 Ridge Pike Plaza | Eagleville, PA 19403

For Lease



## Tenant List

KEY #	TENANT	SQ. FT.
Parcel	<b>AVAILABLE</b>	3,100 SF
2	Ollie's Bargain Outlet	37,373
3	U.S. Postal Service	3,500
4	Via Roma Pizza	3,200
5	Golden Nails & Spa, Inc.	1,600
6	Great Clips	1,600
7	<b>AVAILABLE</b>	2,000
8	Dollar Tree Stores, Inc.	10,263

Join tenants in the area:

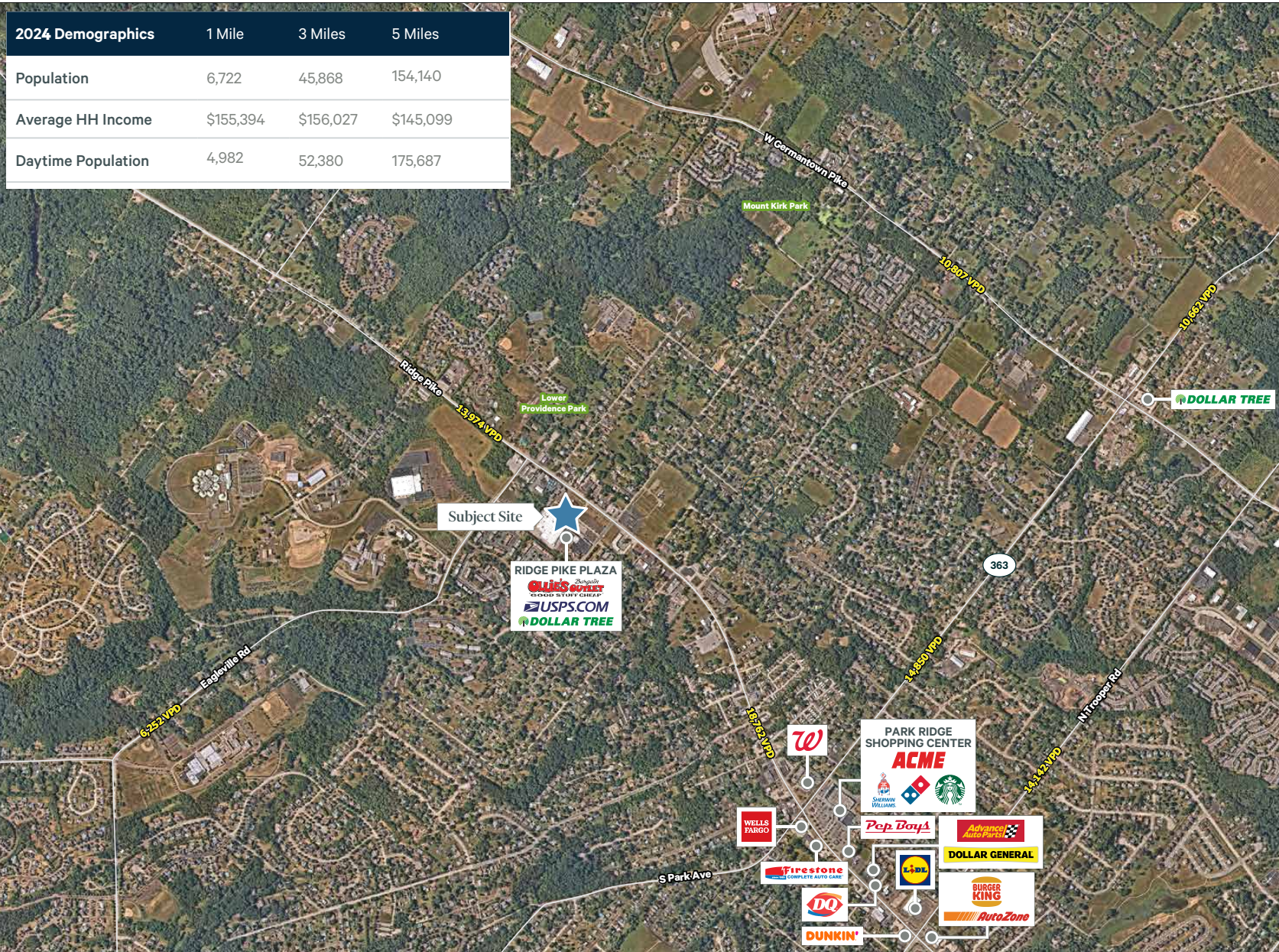




# Ridge Pike Plaza

3200 Ridge Pike Plaza | Eagleville, PA 19403

2024 Demographics	1 Mile	3 Miles	5 Miles
Population	6,722	45,868	154,140
Average HH Income	\$155,394	\$156,027	\$145,099
Daytime Population	4,982	52,380	175,687



## For Lease



5 Mile Population  
154,140



5 Mile Daytime  
Population  
175,687



5 Mile Median  
HH Income  
\$102,615



5 Mile Average HH  
Income:  
\$145,099



5 Mile Traffic  
Counts  
18,762 VPD

© 2025 CBRE, Inc. All rights reserved. This information has been obtained from sources believed reliable, but has not been verified for accuracy or completeness. You should conduct a careful, independent investigation of the property and verify all information. Any reliance on this information is solely at your own risk. CBRE and the CBRE logo are service marks of CBRE, Inc. All other marks displayed on this document are the property of their respective owners, and the use of such logos does not imply any affiliation with or endorsement of CBRE. Photos herein are the property of their respective owners. Use of these images without the express written consent of the owner is prohibited.

