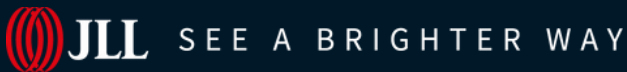
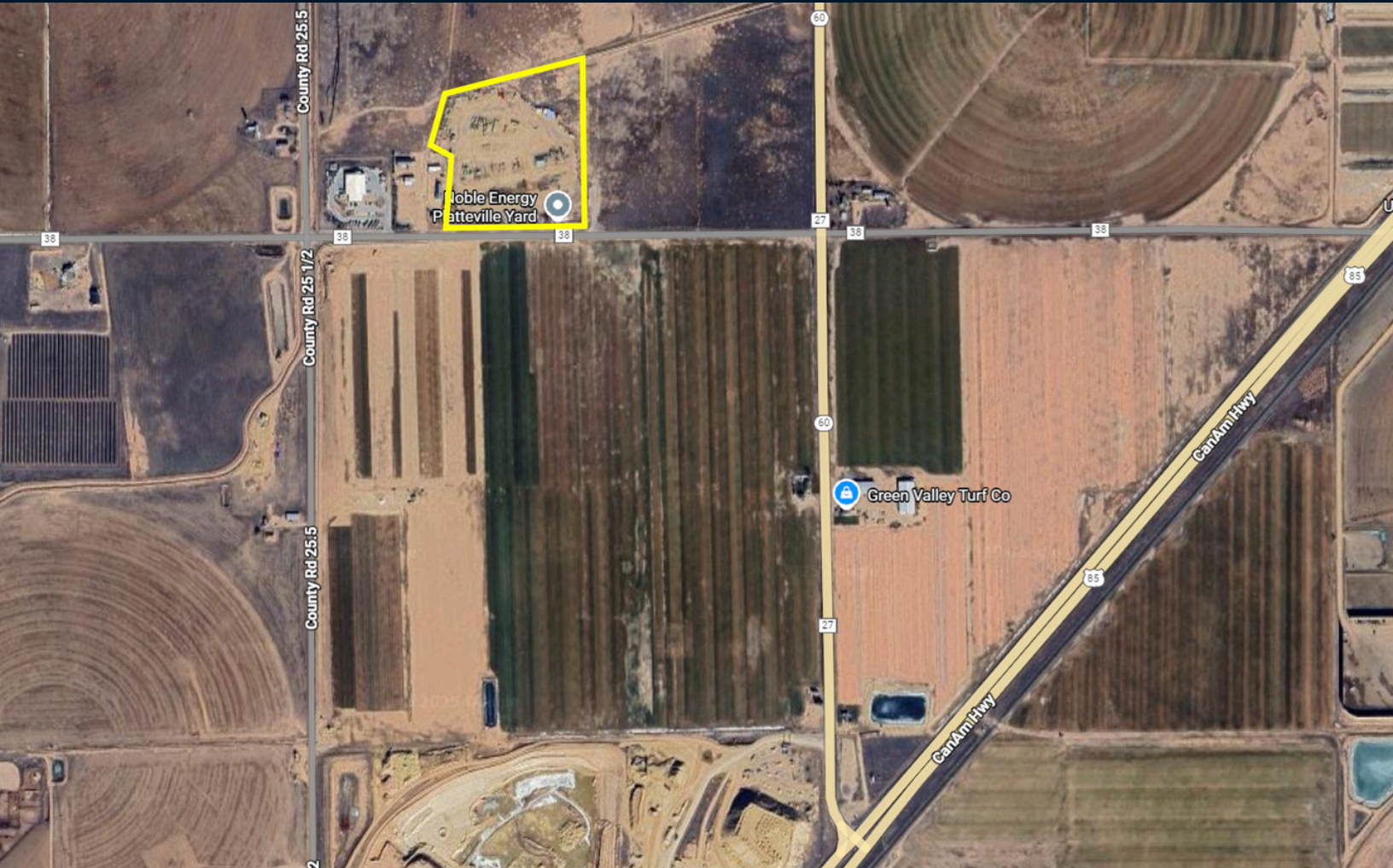


Land For Sale

14.2 Acres

Highway 60 & Weld County Road 38

Platteville, Colorado

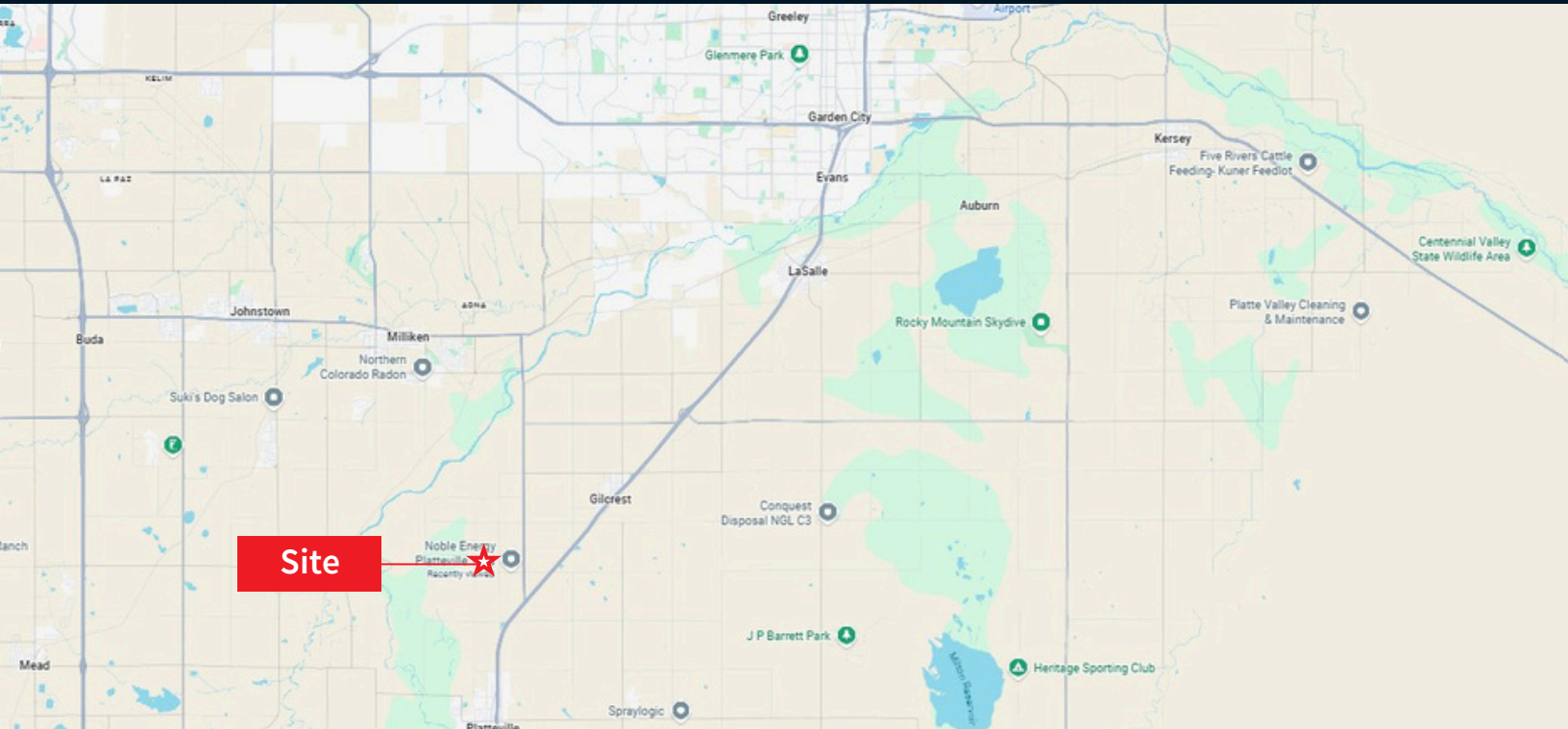


Site Overview

Site Size	14.2 Acres
City	Platteville
County	Weld County

Highway 60 & CR 38 Platteville, CO 80651

Zoning	Agricultural (USR)
Uses	Medium industrial with outside storage
Price	\$3,500,000



For more information, please contact:

Bruce Dodge
 Executive Vice President
 +1 303 901 5205
bruce.dodge@jll.com

Michael Fredman
 Associate
 +1 720 231 2277
michael.fredman@jll.com