

6207 RAMADA DRIVE
CLEMMONS, NC

± 8.6 ACRES

Price Reduced:
\$3,750,000

**FOR
SALE**

DEVELOPMENT READY



PROPERTY HIGHLIGHTS

- ±8.6 Acres Level Useable acreage suitable for a wide range of commercial concepts
- Public water & sewer run along Ramada Dr. in front of the property
- ±950 feet of frontage on Ramada Drive with direct visibility from I-40
- Commercial Momentum: Adjacent to newly built Bee Safe Self Storage which reinforces area's commercial trajectory
- Future Land Use: Designated "Employment Area" by Village of Clemmons

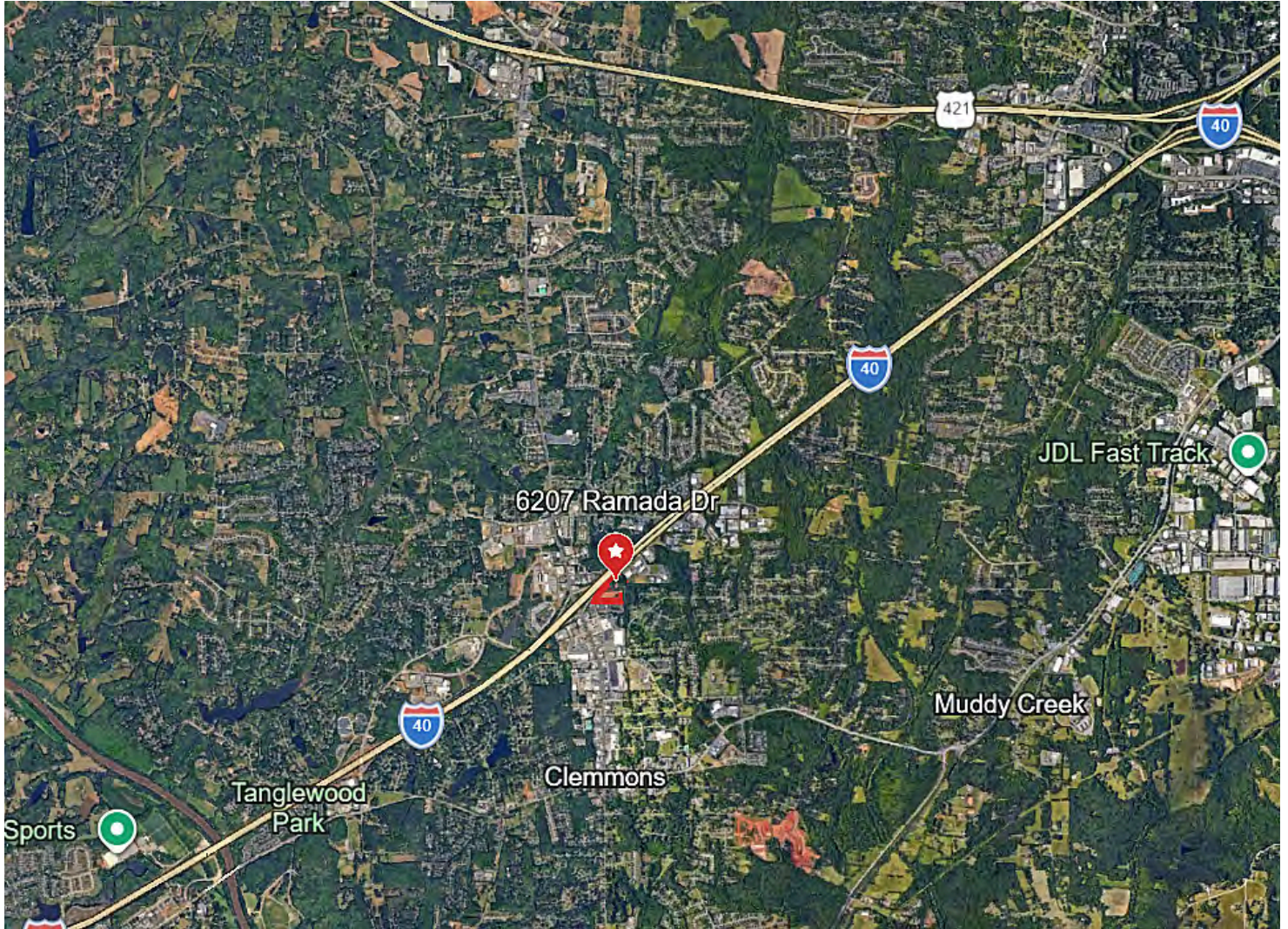


NAI Piedmont Triad
Commercial Real Estate Services, World Wide

WILL BLACKWELL, SIOR
BROKER
336.345.1500
wblackwell@naipt.com

TIM LICHTENSTEIN, CCIM
BROKER
336.423.8292
tlichtenstein@naipt.com

GERALD STATHAKIS
BROKER
864.314.0597
gstathakis@naipt.com



DISTANCE TO SITES OF INTEREST

SITE	MILES
Winston-Salem CBD	20.1
Piedmont Triad International Airport	32.7
Lexington, NC	19.9

This material may contain content generated with AI assistance and publicly sourced data. NAI Piedmont Triad makes every effort to verify the information but makes no warranties or representations regarding the accuracy, completeness, or reliability of the information. Independent verification of all details is strongly encouraged. Prices, terms, and availability are subject to change without prior notice.

WILL BLACKWELL, SIOR
 BROKER
 336.345.1500
 wblackwell@naipt.com

TIM LICHTENSTEIN, CCIM
 BROKER
 336.423.8292
 tlichtenstein@naipt.com

GERALD STATHAKIS
 BROKER
 864.314.0597
 gstathakis@naipt.com



This material may contain content generated with AI assistance and publicly sourced data. NAI Piedmont Triad makes every effort to verify the information but makes no warranties or representations regarding the accuracy, completeness, or reliability of the information. Independent verification of all details is strongly encouraged. Prices, terms, and availability are subject to change without prior notice.

WILL BLACKWELL, SIOR
BROKER
336.345.1500
wblackwell@naipt.com

TIM LICHTENSTEIN, CCIM
BROKER
336.423.8292
tlichtenstein@naipt.com

GERALD STATHAKIS
BROKER
864.314.0597
gstathakis@naipt.com