

110 Willis Avenue

Mineola, New York

Free-Standing Ambulatory Surgery Center for Sale



Property Information

- + Size: 16,440 SF consisting of:
1st Floor: 10,173 SF
2nd Floor: 6,267 SF
- + Land Area: .7339 Acres
- + Year Built: Built 1945 / Renovated 2002
- + Taxes: \$130,936
- + Superstructure: Steel frame construction with concrete deck
- + Facade: Stucco
- + Zoning: Village of Mineola, B-1
- + Parking: 40 spaces
- + Electrical: Approx. 1200 Amps
- + HVAC: 2nd floor - Roof 4 units ranging from 6-30 tons.
1st floor - Roof 3 units ranging from 6-8 tons.
- + Utilities: Electric - PSE&G
Natural Gas - Keyspan
- + Fire Suppression: Fully Sprinklered
- + Slab-to-Slab Height: Approximately 12'-0"
- + Roof: Built Up Roof
- + Elevator: 1, hydraulic passenger cab
- + Cable/Fiber: Optimum
- + Automobile Access: Northern State Pkwy - 2.5 miles
Long Island Expressway - 3.5 miles
Jericho Tpk - .4 miles
Meadowbrook Pkwy - 1.6 miles
- + Transit: Mineola LIRR Station - .4 miles
NICE Bus .15 miles



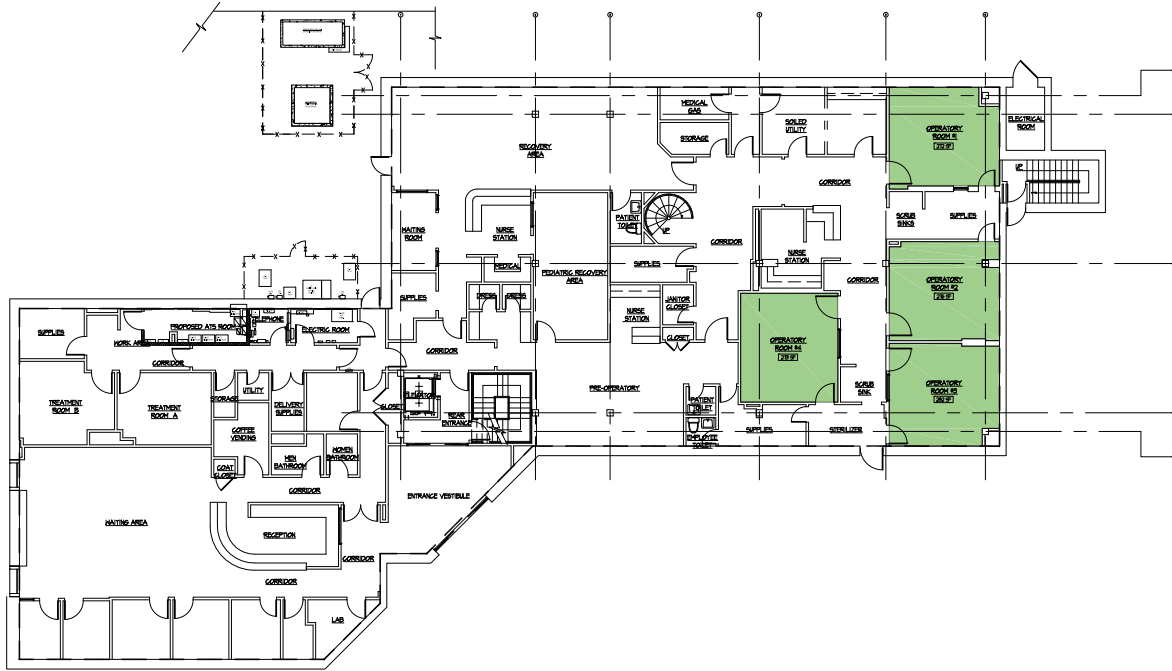
Contact Us

Philip M. Heilpern
Senior Vice President
+1 631 370 6080
philip.heilpern@cbre.com

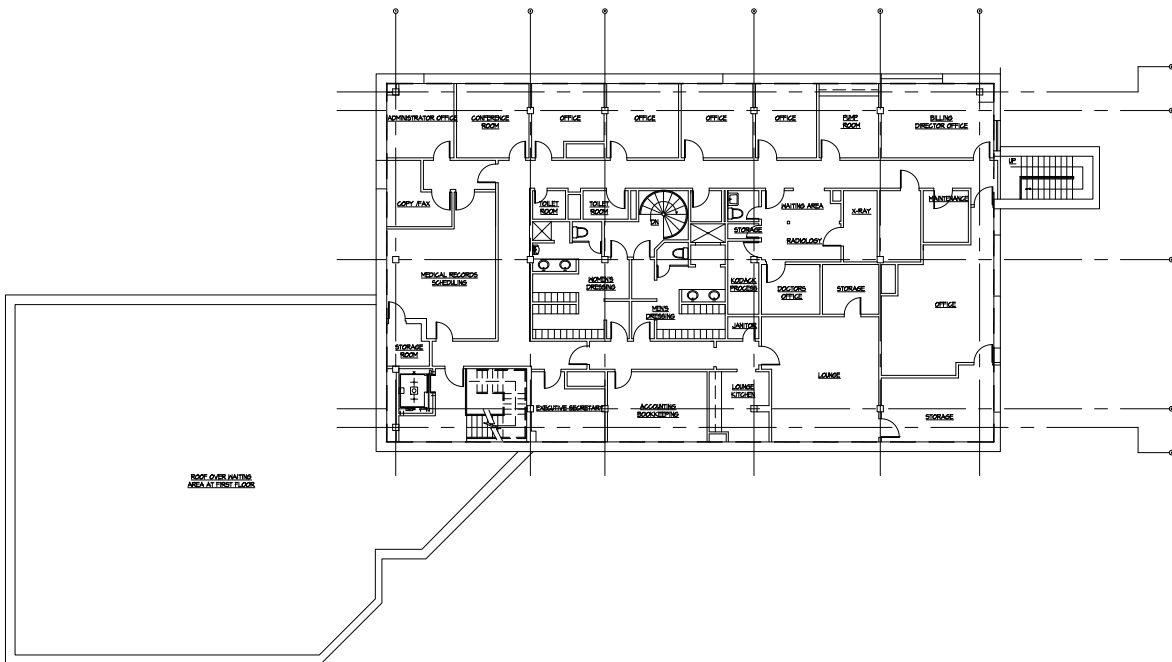
Martin Lomazow
Senior Vice President
+1 631 370 6070
martin.lomazow@cbre.com

Matt Manoogian
Vice President
+1 631 370 6063
matt.manoogian@cbre.com

First Floor Plan | 10,173 SF



Second Floor Plan | 6,267 SF





© 2024 CBRE, Inc. All rights reserved. This information has been obtained from sources believed reliable, but has not been verified for accuracy or completeness. You should conduct a careful, independent investigation of the property and verify all information. Any reliance on this information is solely at your own risk. CBRE and the CBRE logo are service marks of CBRE, Inc. All other marks displayed on this document are the property of their respective owners, and the use of such logos does not imply any affiliation with or endorsement of CBRE. Photos herein are the property of their respective owners. Use of these images without the express written consent of the owner is prohibited.