

FOR LEASE

COURTYARD AT JAMESTOWN



MOUNTAIN WEST  
COMMERCIAL REAL ESTATE

BRANDON JOHNSON

bjohnson@mwcre.com

direct 801.427.0350

[View Profile](#)

PROPERTY DETAILS

3575 NORTH 100 EAST, PROVO, UT 84604

- Best deal in Provo River Bottoms!
- Really rich interior finishes
- Lots of light and beautiful landscaping
- Two beautiful suites to choose from or take them both!
- Prestigious Provo River Bottoms office park and great location with lots of amenities nearby
- Ample parking
- Close to BYU and UVU
- \$11/SF NNN
- NNN fee is low at \$4.85/SF
- Suite 100: 2,645 SF rentable
- Suite 125: 2,108 SF rentable
- Suites can be combined for 4,753 SF contiguous space

2024 DEMOS

EST. POPULATION

1 MILE » 11,301  
 3 MILE » 128,653  
 5 MILE » 238,286



EST. HOUSEHOLDS

1 MILE » 3,324  
 3 MILE » 39,349  
 5 MILE » 74,101



EST. AVERAGE HH INCOME

1 MILE » \$178,221  
 3 MILE » \$104,922  
 5 MILE » \$103,979



FULL SERVICE  
COMMERCIAL REAL ESTATE

2015 West Grove Parkway, Suite J

Pleasant Grove, UT 84062

Office 385.233.9140

[www.mwcre.com](http://www.mwcre.com)





**MOUNTAIN WEST**  
COMMERCIAL REAL ESTATE

**BRANDON JOHNSON**

[bjohnson@mwcre.com](mailto:bjohnson@mwcre.com)

direct 801.427.0350

[View Profile](#)

**FULL SERVICE  
COMMERCIAL REAL ESTATE**

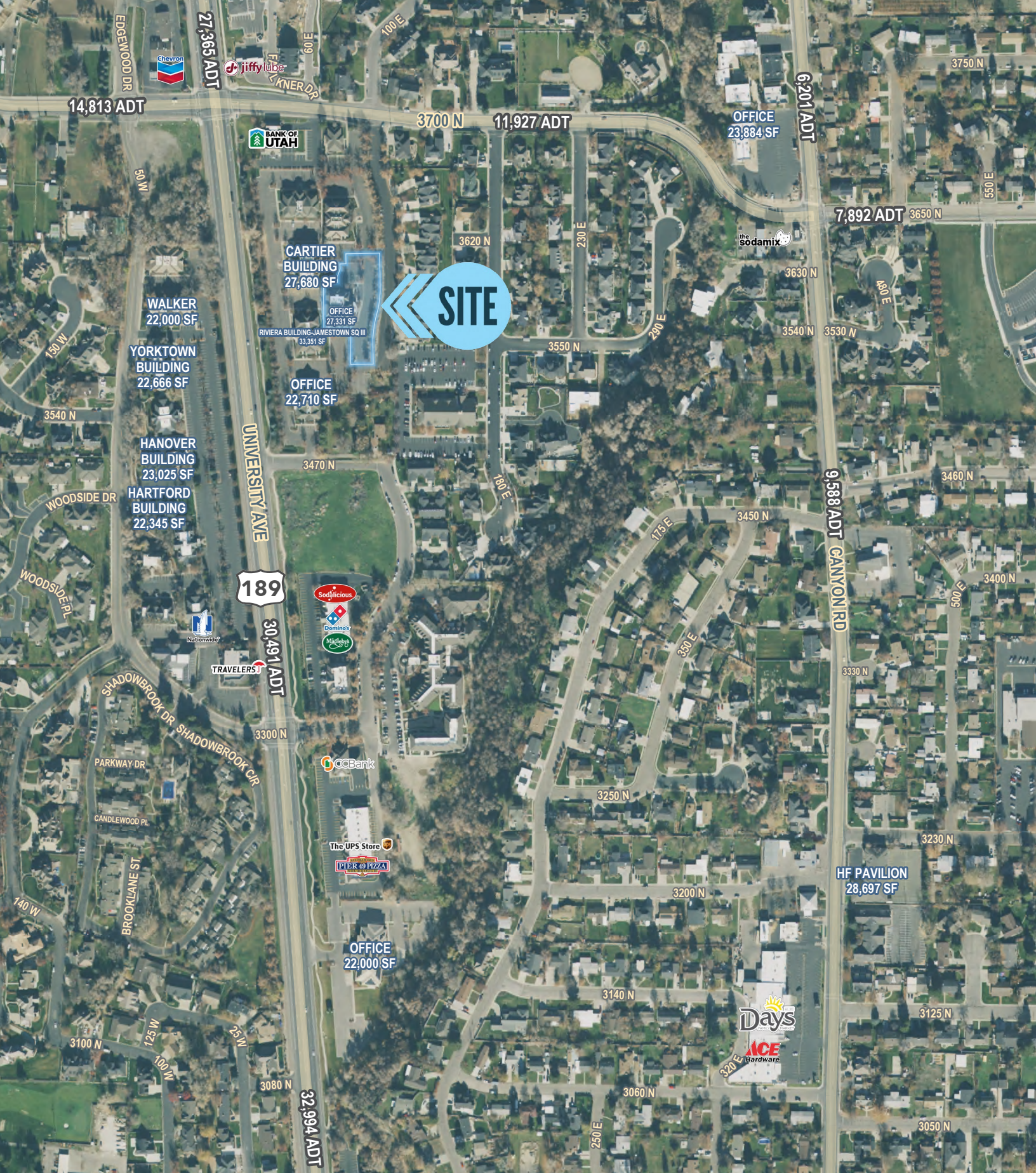
2015 West Grove Parkway, Suite J

Pleasant Grove, UT 84062

Office 385.233.9140

[www.mwcre.com](http://www.mwcre.com)





**SITE**

**CARTIER BUILDING**  
27,680 SF

OFFICE  
27,331 SF

RIVIERA BUILDING - JAMESTOWN SQ III  
33,351 SF

OFFICE  
22,710 SF

**WALKER**  
22,000 SF

**YORKTOWN BUILDING**  
22,666 SF

**HANOVER BUILDING**  
23,025 SF

**HARTFORD BUILDING**  
22,345 SF

**189**

30,491 ADT

32,994 ADT

OFFICE  
23,884 SF

7,892 ADT

**HF PAVILION**  
28,697 SF

**Days**  
of the Year

**ACE**  
Hardware



**MOUNTAIN WEST**  
COMMERCIAL REAL ESTATE

**BRANDON JOHNSON**  
bjohnson@mwcre.com  
direct 801.427.0350  
[View Profile](#)

**FULL SERVICE  
COMMERCIAL REAL ESTATE**  
312 East South Temple  
Salt Lake City, UT 84111  
Office 801.456.8800  
[www.mwcre.com](http://www.mwcre.com)

This statement with the information it contains is given with the understanding that all negotiations relating to the purchase, renting or leasing of the property described above shall be conducted through this office. The above information while not guaranteed has been secured from sources we believe to be reliable.