

11 East Broadway, Suite #8B

As Exclusive Agent, Douglas Elliman
Is Pleased To Offer The Following
Commercial Condominium For Sale

MCKENZIE
RYAN TEAM
AT DOUGLAS ELLIMAN
REAL ESTATE

575 MADISON AVENUE, NEW YORK, NEW YORK 10022

elliman.com

LOCATION

11 East Broadway

SPACE

Suite #8B

SQUARE FEET

841

PRICE

\$695,000

TERM

Negotiable

POSSESSION

Immediate

FEATURES

- 8th floor Private Suite located just off the elevator
- Turnkey space ideal for legal or standard office uses
- Reception area and two private offices
- Windows providing natural light and skyline views
- In the heart of Lower Manhattan with proximity to highways, bridges and multiple mass transit options



Glory China Tower; 11 East Broadway, Suite #8B

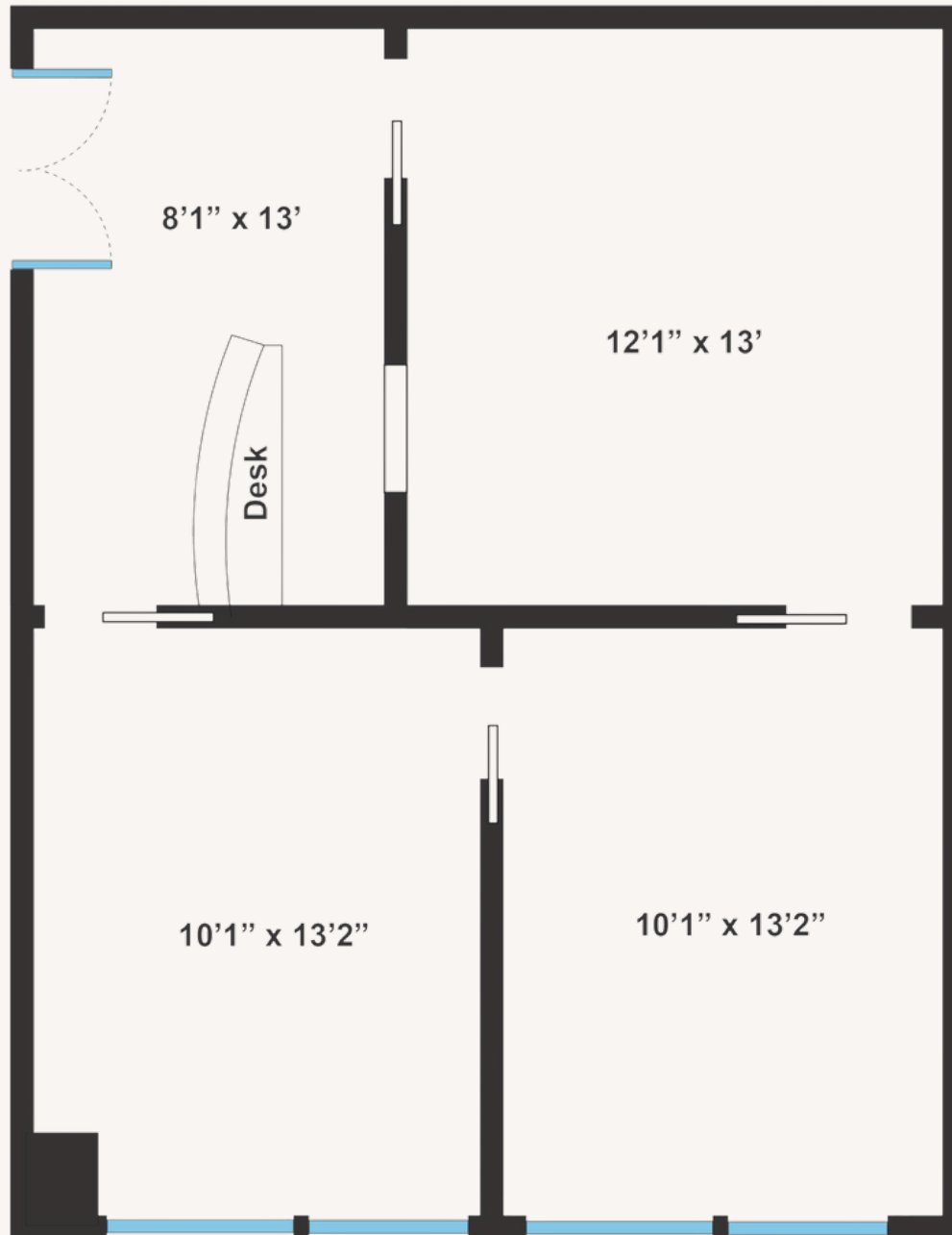
Douglas Elliman is excited to offer an excellent opportunity to own a 841 sq. ft. commercial office condo in the Glory China Tower, located at 11 East Broadway. This well-appointed space features a welcoming reception area and two private offices, offering stunning views of Lower Manhattan and the iconic bridges that define the city's skyline.

Situated in the heart of a bustling business district, this office is ideal for those seeking a dynamic location with proximity to local amenities and transportation. Well suited for law firms, accounting practices, or other small businesses, this turnkey space provides both functionality and efficiency.

Don't miss this opportunity to establish or expand your business in one of New York's most vibrant neighborhoods!

FLOORPLAN

11 EAST BROADWAY; SUITE #8B





11 East Broadway; Suite #8B

FOR FURTHER INFORMATION AND INSPECTION,
PLEASE CONTACT:



WILLIAM ETHERIDGE

Associate Real Estate Broker
william.etheridge@elliman.com
M: 646.837.2641
O: 212.776.4362

 **Douglas Elliman**

© 2024 DOUGLAS ELLIMAN COMMERCIAL, LLC. ALL RIGHTS RESERVED. THE INFORMATION CONTAINED IN THIS DOCUMENT IS PROPRIETARY TO DOUGLAS ELLIMAN COMMERCIAL, LLC AND SHALL BE USED SOLELY FOR THE PURPOSES OF EVALUATING THIS PROPOSAL. ALL SUCH DOCUMENTATION AND INFORMATION REMAINS THE PROPERTY OF DOUGLAS ELLIMAN COMMERCIAL, LLC AND SHALL BE KEPT CONFIDENTIAL. REPRODUCTION OF ANY PART OF THIS DOCUMENT IS AUTHORIZED ONLY TO THE EXTENT NECESSARY FOR ITS EVALUATION.