

9400 PLACE

9340 - 9400 SW Beaverton Hillsdale Hwy | Beaverton, OR 97005

FOR LEASE



OFFICE SPACE AVAILABLE FOR LEASE

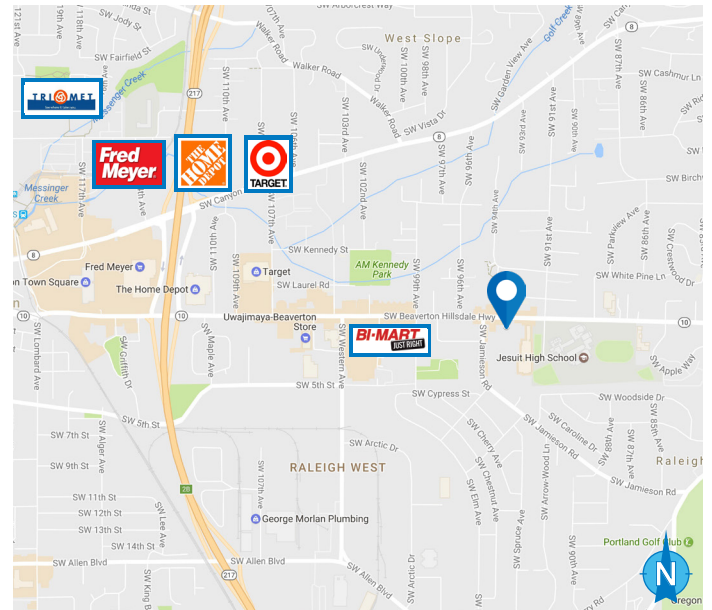
BUILDING 9400 - \$21 PSF, FS

THIRD FLOOR

- **FULL FLOOR AVAILABLE! - 35,067 RSF - (Can be demised)**
- Suite 300: ± 15,680 RSF
- Suite 330: ± 3,102 RSF
- Suite 340: ± 581 RSF
- Suite 360: ± 7,906 RSF
- Suite 380: ± 7,798 RSF

FEATURES

- Bright, natural light with offices along window line
- Courtyard setting; elevator served
- Professionally managed
- Ample parking with 3.5/1000 ratio
- Along SW Beaverton Hillsdale Highway
- Adjacent to Jesuit High School
- Walk to amenities; close to Beaverton Town Square
- Easy access to 217
- Safe, secure building with 24/7 tenant access
- Washington County taxes



10.29.2024

For more information or a property tour, please contact:

DUANE LINK

503.225.8465

Duanel@norris-stevens.com



Information contained herein has been obtained from others and considered to be reliable; however, a prospective purchaser or lessee is expected to verify all information to their own satisfaction.

Norris & Stevens

INVESTMENT REAL ESTATE SERVICES

900 SW 5th Avenue • 17th Floor • Portland, OR 97204
503.223.3171 • norris-stevens.com

9400 PLACE

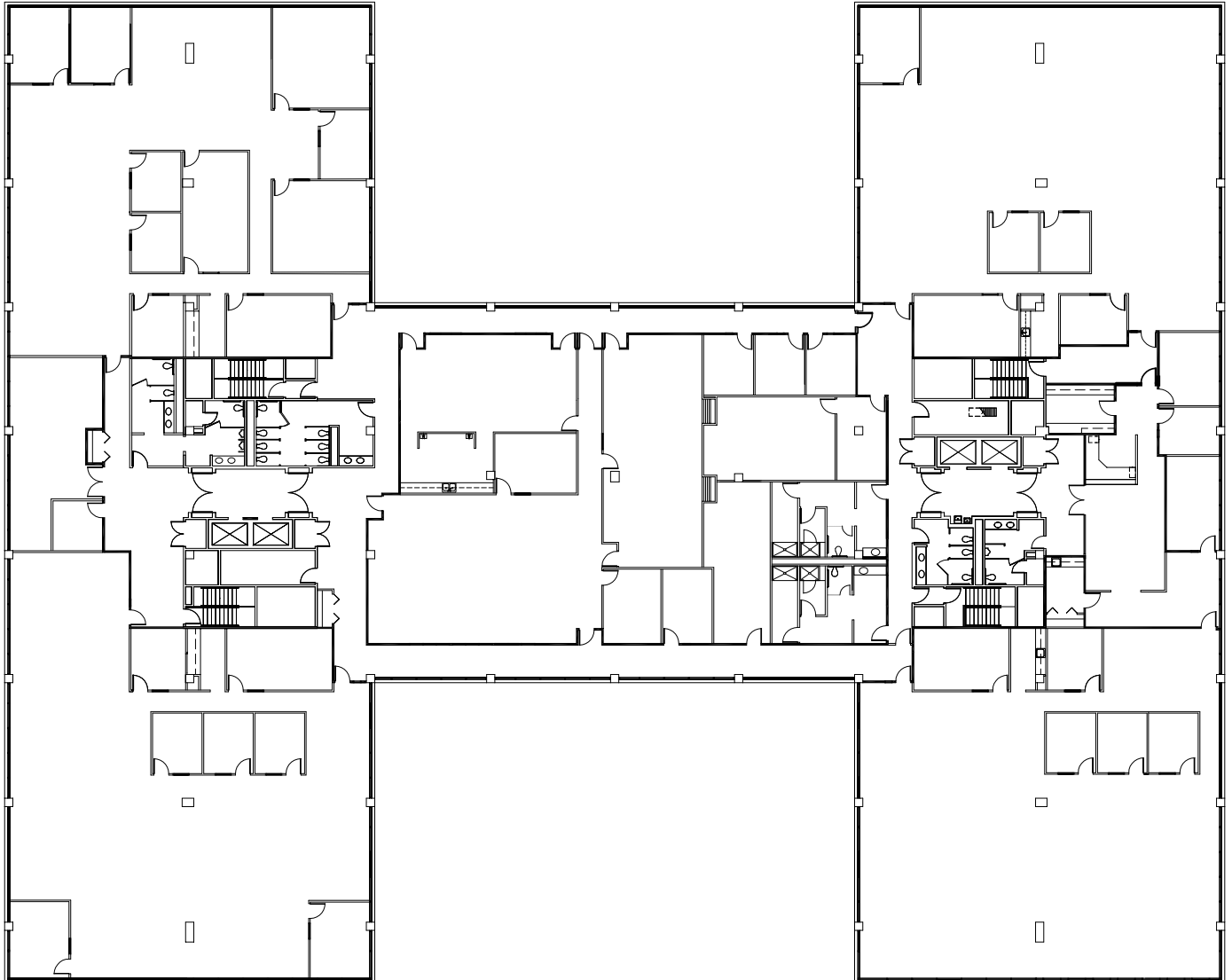
9340 - 9400 SW Beaverton Hillsdale Hwy | Beaverton, OR 97005

FOR LEASE

FLOOR PLANS

BUILDING 9400 THIRD FLOOR

FULL FLOOR AVAILABLE - 35,067 RSF (CAN BE DEMISED)



For more information or a property tour, please contact:

DUANE LINK

503.225.8465

Duanel@norris-stevens.com

Norris & Stevens

INVESTMENT REAL ESTATE SERVICES



Information contained herein has been obtained from others and considered to be reliable; however, a prospective purchaser or lessee is expected to verify all information to their own satisfaction.

900 SW 5th Avenue • 17th Floor • Portland, OR 97204
503.223.3171 • norris-stevens.com

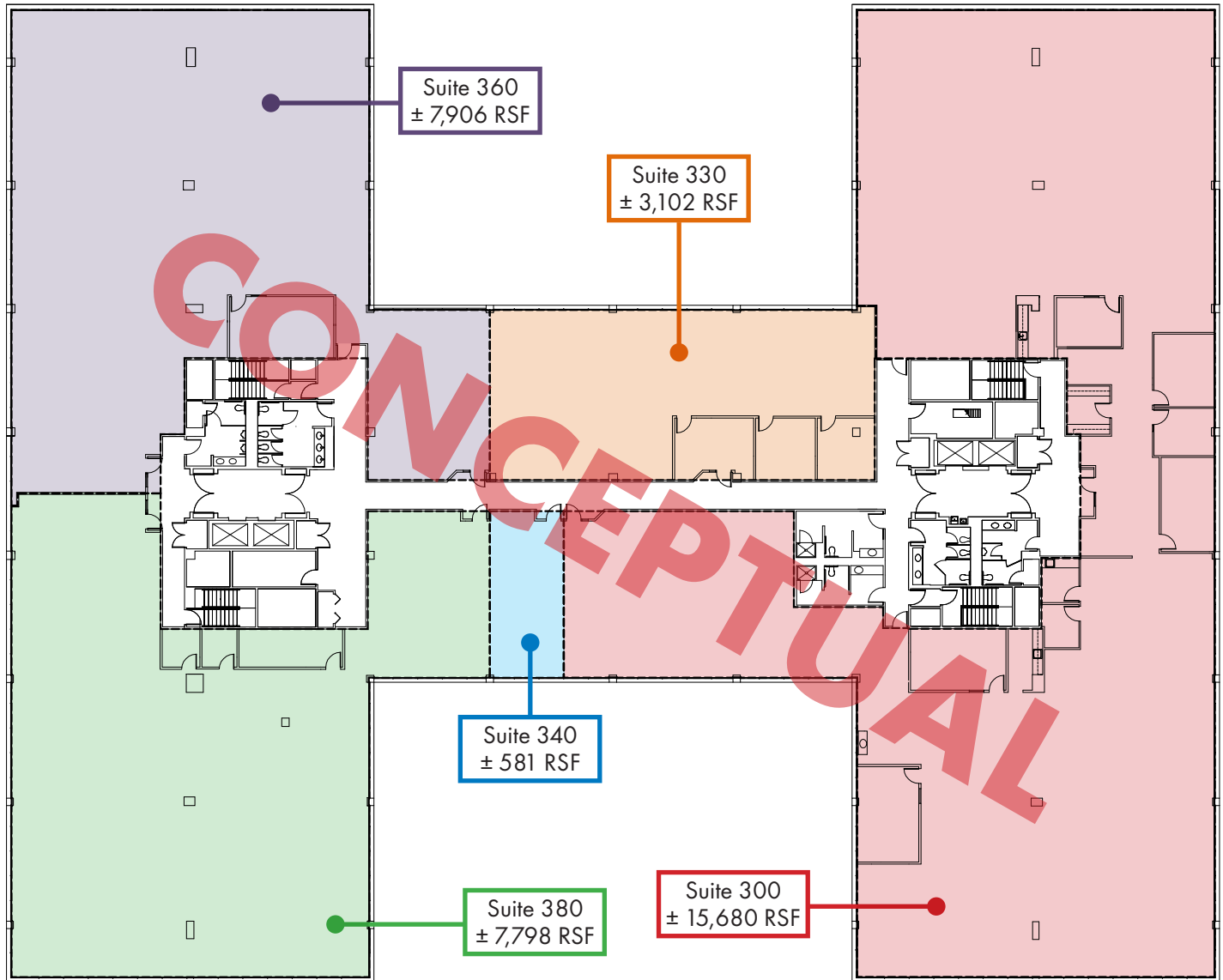
9400 PLACE

9340 - 9400 SW Beaverton Hillsdale Hwy | Beaverton, OR 97005

FOR LEASE

FLOOR PLANS

BUILDING 9400 THIRD FLOOR



For more information or a property tour, please contact:

DUANE LINK

503.225.8465

Duanel@norris-stevens.com

Norris & Stevens

INVESTMENT REAL ESTATE SERVICES



Information contained herein has been obtained from others and considered to be reliable; however, a prospective purchaser or lessee is expected to verify all information to their own satisfaction.

900 SW 5th Avenue • 17th Floor • Portland, OR 97204
503.223.3171 • norris-stevens.com