

COLONIAL CENTER 100, 200, 300

ORLANDO (LAKE MARY), FL

AT COLONIAL TOWNPARK



CC 100

Colonial Center Parkway, Lake Mary, FL

CBRE



**CLICK HERE
FOR PROPERTY TOUR**



PARK HIGHLIGHTS



Building and monument signage available
(depending on RSF Size)



Large efficient floorplates



Ample parking



Fitness Center w /separate shower
and locker facilities



CC 100 Grab-n-Go vending & Tenant lounge
coming soon



Conference/training room
(26 seats with movable furniture)



Dual-feed electrical service from two (2) separate
substations via a redundant loop



Direct access on Interstate 4 and SR 417 and
soon to be completed SR 429 (eastern and
western beltway)



Complimentary Bike Sharing



Auto Charging Stations



Energy Star rated



Achieved WELL Health-Safety Seal rating

COLONIAL TOWNPARK



Colonial TownPark, Orlando's premier mixed-use development, featuring quality retail, restaurants, banking, apartments and access to walking trails and a community park — all within walking distance.

This 175 Acre, Amenity Rich Mixed-Use Corporate Campus Offers:

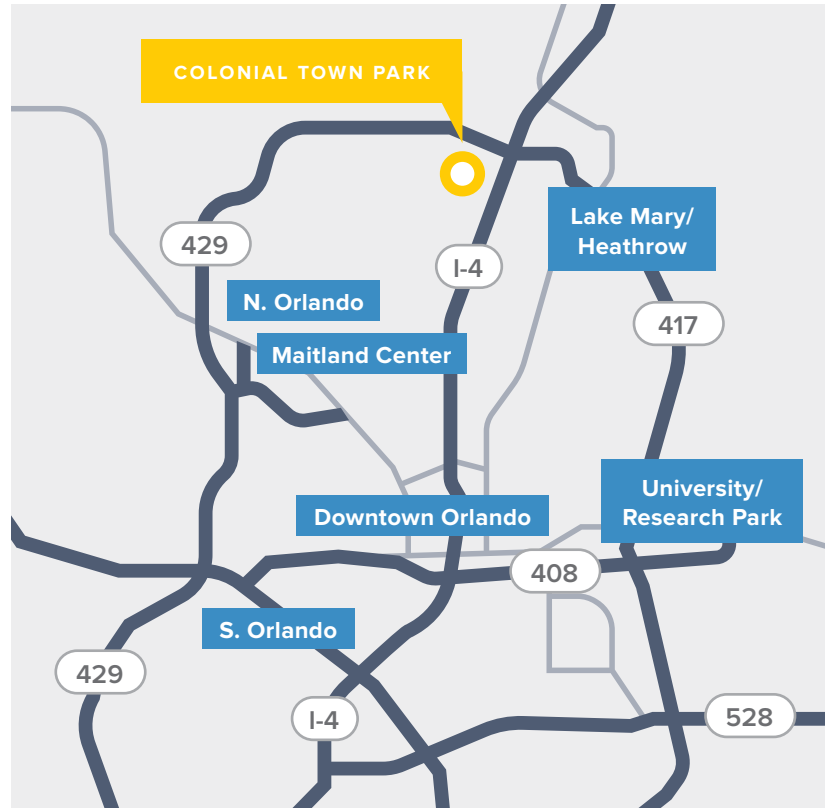
- + 450-unit upscale apartment community (Colonial Grand @ TownPark)
- + 80-unit apartment community including loft apartments (Colonial Reserve @ TownPark)
- + 12-screen AmStar stadium seating theater
- + Hampton Inn & Suites
- + Truist Bank
- + Chase Bank
- + Publix grocer
- + Upscale shops
- + Restaurants to include:
 - + Ruth's Chris Steakhouse
 - + F&D Cantina
 - + Hangry Bison
 - + The Vineyard
 - + Amura Japanese Steakhouse and Sushi Bar
 - + Duffy's Sports Bar & Grill
 - + And more

Location

AREA OVERVIEW

The Lake Mary area, as one of the most attractive business climates in the nation is located 15 miles north of Orlando in Seminole County and is known for —

- + High Corporate Presence
- + Educated and Growing Workforce
- + Top “A” Rated Schools
- + Affordable and Executive Housing
- + Quality Lifestyle

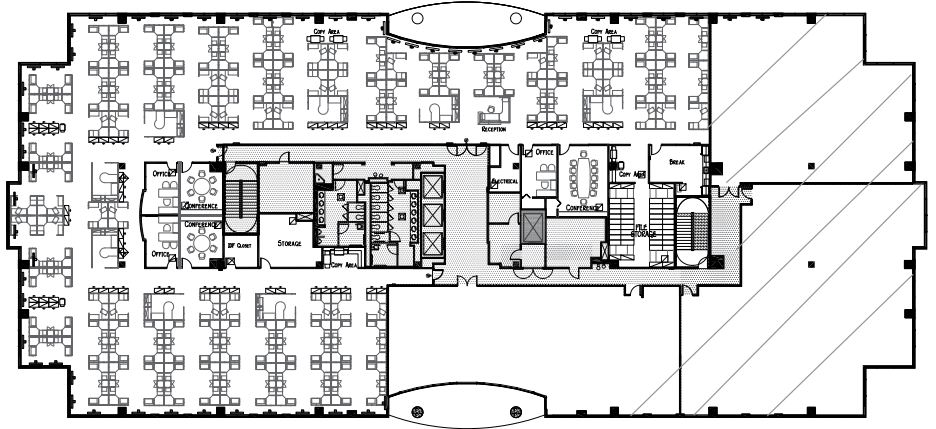


19,866 RSF



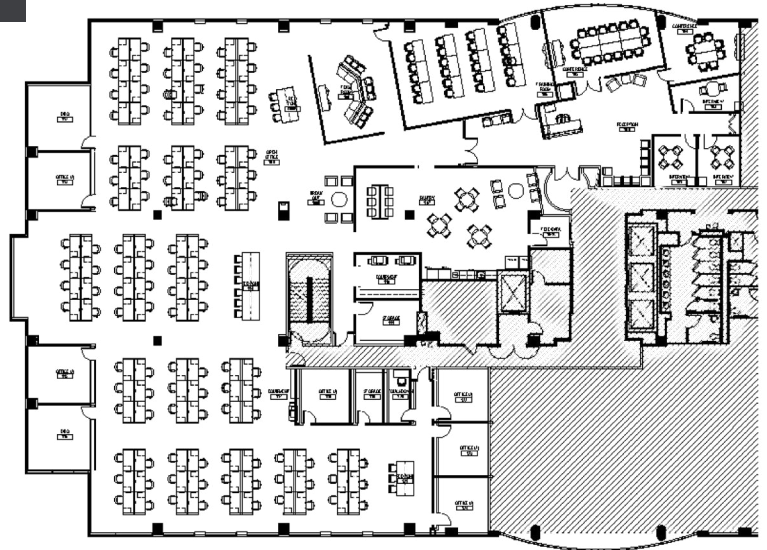
VIRTUAL TOUR - SUITE 200

- + Contiguous to suite 300 for up to 53,734 RSF
- + Beautiful view overlooking Arbor Park
- + 90% open area for workstations
- + Conference room
- + 2 Small conference/huddle rooms
- + 3 Private offices
- + Copy/workroom
- + Break area
- + IT/Data room



17,608 RSF

- + 8 private offices
- + Large open area for workstations
- + Large training room
- + Large conference room
- + 3 small conference rooms
- + Collaboration and break out areas
- + Large break room
- + Copy/work room
- + Storage rooms
- + IT/data room
- + Privacy room
- + Overlooking beautiful Arbor Park

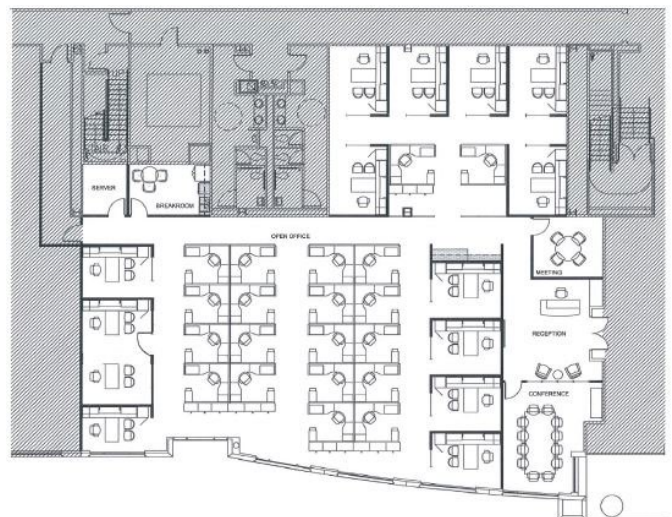


7,047 RSF

- + Double door lobby entrance
- + Reception area
- + Conference room
- + 13 offices
- + Open area for workstations
- + Break room
- + IT data room



VIRTUAL TOUR - SUITE 120





COLONIAL CENTER

100, 200, 300

FOR MORE INFORMATION

Sandy Chace

Senior Vice President

P +1 407 404 5099

C +1 407 758 6380

sandy.chace@cbre.com

www.cbre.com/sandy.chace

Colin Morrison

First Vice President

P +1 407 404 5104

C +1 407 702 5641

colin.morrison1@cbre.com

Owned By;

The BROOKDALE Group



©2025 CBRE, Inc. All rights reserved. This information has been obtained from sources believed reliable, but has not been verified for accuracy or completeness. Any projections, opinions, or estimates are subject to uncertainty. The information may not represent the current or future performance of the property. You and your advisors should conduct a careful, independent investigation of the property and verify all information. Any reliance on this information is solely at your own risk. CBRE and the CBRE logo are service marks of CBRE, Inc. and/or its affiliated or related companies in the United States and other countries. All other marks displayed on this document are the property of their respective owners. Photos herein are the property of their respective owners and use of these images without the express written consent of the owner is prohibited. PMStudio_December2025

CBRE